



# **The Corporation of the County of Wellington**

## **Police Services Board**

### **Agenda**

June 10, 2015

9:00 am

County Administration Centre

Guthrie Room

Members: Warden George Bridge; Councillor Lynda White (Chair), Russ Spicer, Kent Smith, Jeremy Vink

---

Pages

1. **Call to Order**
2. **Declaration of Pecuniary Interest**
3. **Minutes for Approval** 2 - 6  
May 13, 2015
4. **Financial Statements and Variance Projections as of May 31, 2015** 7 - 10
5. **Detachment Commander's Report - May 2015** 11 - 29
6. **Brisbane Public School Update** 30 - 35
7. **May 2015 Parking Ticket Report** 36 - 36
8. **May 2015 False Alarm Revenue Report** 37 - 37
9. **Debit Machine Update - Verbal**
10. **Guelph Wellington Crime Stoppers Programme Year in Review Presentation**
11. **Marijuana Vision Goggles Simulator Demonstration**
12. **Closed Meeting**  
(Agenda emailed under separate cover)
13. **Rise and Report**
14. **Adjournment**  
Next meeting date September 9, 2015 or at the call of the Chair.



**Corporation of the County of Wellington  
Police Services Board  
Minutes**

May 13, 2015  
County Administration Centre  
Guthrie Room

Present:                   Warden George Bridge  
                                Councillor Lynda White (Chair)  
                                Russ Spicer  
                                Jeremy Vink  
                                Kent Smith

Staff:                     Donna Bryce, County Clerk  
                                Ken DeHart, County Treasurer  
                                Kelly-Ann Wingate, Parking, Licensing and Alarm Coordinator  
                                Rachel Wilson, Summer Student  
                                Scott Wilson, Board Secretary

Also Present:             Councillor Gregg Davidson

---

**1.     Call to Order**

At 9:00 am, the Chair called the meeting to order.

**2.     Declaration of Pecuniary Interest**

There were no declarations of pecuniary interest.

**3.     Minutes for Approval**

1/6/15

**Moved by:** Warden Bridge

**Seconded by:** Russ Spicer

That the minutes of the April 8, 2015 meeting of the Wellington County Police Services Board be adopted.

**Carried**

**4. Financial Statements as of April 30, 2015**

2/6/15

**Moved by:** Warden Bridge

**Seconded by:** Russ Spicer

That the Police Services Board Financial Statements as of April 30, 2015 be received for information.

**Carried**

**5. Police Services Five-Year Plan Revisited**

3/6/15

**Moved by:** Jeremy Vink

**Seconded by:** Russ Spicer

That the 2015-2019 five-year plan report for the Police Services Department be received for information; and

That Council identify any areas of concern or changes in priorities to be considered for the 2016 Budget and Five-Year Plan Process.

**Carried**

**6. 2014 Reconciled O.P.P. Contract Policing Costs Report**

4/6/15

**Moved by:** Warden Bridge

**Seconded by:** Russ Spicer

That the 2014 Reconciled O.P.P. Contract Policing costs be approved; and

That the 2014 final operating and capital statements for Police Services be approved.

**Carried**

**7. Detachment Commander's Report - April 2015**

5/6/15

**Moved by:** Kent Smith

**Seconded by:** Jeremy Vink

That the Detachment Commander's Report for April 2015 be received for information.

**Carried**

**8. April 2015 Parking Ticket Report**

6/6/15

**Moved by:** Russ Spicer

**Seconded by:** Jeremy Vink

That the April 2015 Parking Ticket Report be received for information.

**Carried**

**9. April 2015 False Alarm Revenue Report**

7/6/15

**Moved by:** Russ Spicer

**Seconded by:** Kent Smith

That the May 2015 False Alarm Revenue Report be received for information.

**Carried**

**10. Project Lifesaver Conference Update - Verbal**

8/6/15

**Moved by:** Kent Smith

**Seconded by:** Warden Bridge

That the Police Services Board support the attendance of one officer for educational purposes at the 12<sup>th</sup> Annual Project LifeSaver Conference in Orlando, Florida on September 14 to 17, 2015.

**Carried**

**11. Marijuana Simulation Vision Goggles Discussion - Verbal**

9/6/15

**Moved by:** Warden Bridge

**Seconded by:** Jeremy Vink

That the Police Services Board recommend that County Council approve the purchase of Marijuana Simulation Vision Goggles and Event Kit for use by the OPP to demonstrate the effects of drug impairment.

**Carried**

**12. Debit Machine Finalization Update - Verbal**

Ms. Kelly-Ann Wingate advised the Board that the debit/credit machines were in place at all three Operations Facilities in the County and that training for the Administrative Clerks had been completed.

**13. Board Auction Update - Verbal**

The Police Services Board Auction would take place on June 18, 2015 during the regular auction held at the Parr Auction Facility starting at 5:00 pm. Crimestoppers would host their annual barbeque at the site.

**14. Closed Meeting**

10/6/15

**Moved by:** Russ Spicer

**Seconded by:** Jeremy Vink

That the Police Services Board move into a closed meeting for the purposes of considering intimate financial or personal matters or other matters that may be disclosed of such a nature, having regard to the circumstances, that the desirability of avoiding their disclosure in the interest of any person affected or in the public interest outweighs the desirability of adhering to the principle that proceedings be open to the public.

**Carried**

**15. Rise and Report**

11/6/15

**Moved by:** Warden Bridge

**Seconded by:** Kent Smith

That the Wellington County Police Services Board rise and report from the closed meeting.

**Carried**

**16. Adjournment**

At 10:25 am, the Chair adjourned the meeting until June 10, 2015 or at the call of the Chair.

---

Lynda White  
Chair  
Police Services Board



# COUNTY OF WELLINGTON

---

## COMMITTEE REPORT

**To:** Chair and Members of the Police Services Board  
**From:** Ken DeHart, County Treasurer  
**Date:** Wednesday, June 10, 2015  
**Subject:** **Police Financial Statements and Variance Projections as of May 31, 2015**

---

### Background:

This report is respectfully submitted in accordance with the County's Budget Variance Reporting policy, and provides a first projection to year-end based on expenditures and revenues to May 31, 2015 for Police Services.

### Operating

- Grant funding received to date includes the first "1,000 Officers Programme" payment, the first RIDE programme grant for 2015 and 25% (\$8,524) of the 2015 Court Security and Prisoner Transportation grant. The grant amount budgeted was \$7,700. A positive variance of \$26,000 is anticipated.
- False alarm revenue and parking fine revenue are each tracking on budget; if revenues continue at the current pace a small positive variance is expected at year end
- Salaries, wages and benefits for County staff are on budget no variance is expected
- Purchased services are tracking above budget to this point in the year due to higher than expected snow removal and utility costs at the detachments during the winter months; a small negative variance is expected
- The majority of the debt charges related to the funding of the Rockwood Operations Centre will be incurred later in the year – no variance is expected
- Quarterly reconciliations are no longer provided under the new policing funding model. This is the first year of a new contract with the OPP with the first annual reconciliation expected to be received in March of 2016. The PSU credit amount will be determined at that time. The OPP costs are now based on a per property basis, which means the PSU credit may be applied specific to Wellington County or may be applied province-wide. It is not clear at this time whether any savings in police services will be received through a credit payment at the time of the reconciliation in 2016 or if they will be applied as a reduction in billing to the following year's contract. Staff will report back to committee as more information on the new contract reconciliation process becomes available.

### Capital

- Officers moved into the North Wellington OPP Operations Centre in 2014. The capital project remains open to deal with deficiencies. Staff anticipate a small favourable variance.
- Rockwood OPP Furniture replacements and the Live Scan Fingerprinting projects are both complete with a favourable variance. The surplus will be transferred back to the property and general capital reserves respectively.

As the majority of the police budget pertains to the contract costs, staff cannot at this time provide an accurate forecast of the overall variance to the budget. Non-contract revenues and costs are expected to be on budget overall.

**Recommendation:**

That the Financial Statements and Variance Projections as of May 31, 2015 for Police Services be approved.

Respectfully submitted,

A handwritten signature in black ink, appearing to read "Ken DeHart", with a stylized flourish extending to the right.

Ken DeHart, CPA, CGA  
County Treasurer



**County of Wellington**  
**Police Services**  
Statement of Operations as of  
31 May 2015

	<b>Annual Budget</b>	<b>May Actual \$</b>	<b>YTD Actual \$</b>	<b>YTD Actual %</b>	<b>Remaining Budget</b>
<b>Revenue</b>					
Grants and Subsidies	\$272,700	\$29,718	\$120,492	44%	\$152,208
Licenses, Permits and Rents	\$153,600	\$13,650	\$67,805	44%	\$85,795
Fines and Penalties	\$75,000	\$5,190	\$32,134	43%	\$42,866
User Fees & Charges	\$79,000	\$8,742	\$34,876	44%	\$44,124
Other Revenue	\$1,000	\$0	\$1,847	185%	\$(847)
<b>Total Revenue</b>	<b>\$581,300</b>	<b>\$57,300</b>	<b>\$257,154</b>	<b>44%</b>	<b>\$324,146</b>
<b>Expenditures</b>					
Salaries, Wages and Benefits	\$140,000	\$11,487	\$60,250	43%	\$79,750
Supplies, Material & Equipment	\$44,200	\$1,286	\$21,313	48%	\$22,887
Purchased Services	\$384,800	\$32,635	\$204,209	53%	\$180,591
Transfer Payments	\$16,432,800	\$1,368,868	\$6,704,898	41%	\$9,727,902
Insurance & Financial	\$7,200	\$0	\$7,410	103%	\$(210)
Minor Capital Expenses	\$19,000	\$0	\$0	0%	\$19,000
Debt Charges	\$594,600	\$3,938	\$87,191	15%	\$507,409
Internal Charges	\$1,500	\$0	\$589	39%	\$911
<b>Total Expenditures</b>	<b>\$17,624,100</b>	<b>\$1,418,214</b>	<b>\$7,085,859</b>	<b>40%</b>	<b>\$10,538,241</b>
<b>NET OPERATING COST / (REVENUE)</b>	<b>\$17,042,800</b>	<b>\$1,360,914</b>	<b>\$6,828,705</b>	<b>40%</b>	<b>\$10,214,095</b>
<b>Transfers</b>					
Transfers from Reserves	\$(109,200)	\$0	\$0	0%	\$(109,200)
Transfer to Reserves	\$90,000	\$0	\$90,000	100%	\$0
<b>Total Transfers</b>	<b>\$(19,200)</b>	<b>\$0</b>	<b>\$90,000</b>	<b>(469%)</b>	<b>\$(109,200)</b>
<b>NET COST (REVENUE)</b>	<b>\$17,023,600</b>	<b>\$1,360,914</b>	<b>\$6,918,705</b>	<b>41%</b>	<b>\$10,104,895</b>



# County of Wellington

01-June-2015

## Police Services

### Capital Work-in-Progress Expenditures By Departments

All Open Projects For The Period Ending May 31, 2015

	LIFE-TO-DATE ACTUALS						
	Approved	May	Current	Previous	Total	% of	Remaining
	Budget	Actual	Year	Years		Budget	Budget
NW OPP Operations Centre	\$7,500,000	\$0	\$7,496	\$7,056,048	\$7,063,544	94 %	\$436,456
Live Scan Fingerprinting	\$60,000	\$0	\$49,333	\$0	\$49,333	82 %	\$10,667
Rockwood OPP Furniture Rplcmnt	\$60,000	\$32,720	\$52,270	\$0	\$52,270	87 %	\$7,730
Total Police Services	\$7,620,000	\$32,720	\$109,100	\$7,056,048	\$7,165,147	94 %	\$454,853



**Ontario Provincial Police  
County of Wellington Detachment**

Inspector Scott Lawson

**Report for the  
County of Wellington Police Services Board**

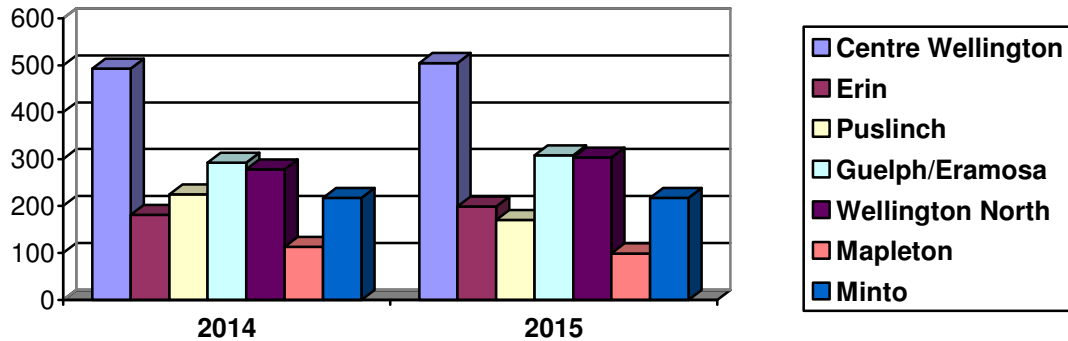
**June 2015**

This report covers the period from May 1<sup>st</sup>, 2015 to May 31<sup>st</sup>, 2015



## Calls for Service

**Calls for Service May 2014  
vs May 2015**



## Calls For Service

Municipality	2009	2010	2011	2012	2013	2014	2015
Centre Wellington	6,240	6,214	5,996	6,449	5,961	5,917	2,068
Town of Erin	2,110	2,152	2,156	2,322	2,167	2,129	816
Puslinch Township	1,900	1,836	2,157	2,404	2,178	2,128	833
Guelph/Eramosa	3,214	3,224	3,615	3,272	3,397	3,462	1,127
Wellington North	3,295	3,172	3,169	3,136	3,337	2,905	1,179
Township of Mapleton	1,209	1,252	1,320	1,322	1,349	1,418	462
Town of Minto	2,352	2,322	2,384	2,725	2,524	2,438	890
Provincial	1997	2,378	2,392	2,694	3,214	3,051	1,020
<b>Totals</b>	<b>22,317</b>	<b>22,550</b>	<b>23,189</b>	<b>24,324</b>	<b>24,127</b>	<b>23,448</b>	<b>8,395</b>

## Victim Services Wellington

2015 YTD Calls for Assistance County of Wellington OPP	Previous Year Totals	
<b>26</b>	2012	122
	2013	100
	2014	91

## 911 Calls

2015 YTD	<b>602</b>
2012	2,683
2013	2,520
2014	2,104

## Ontario Sex Offender Registry

2015 YTD OSOR Registrations	Previous Year Totals	
<b>32</b>	2012	69
	2013	70
	2014	75

## False Alarms

2015 YTD	<b>321</b>
2012	911
2013	961
2014	881

\*This is NOT the number of sex offenders residing in Wellington County



## Crime

<b>Crimes Against Persons</b>	<b>2014</b>	<b>2015 YTD</b>
Homicide	0	2
Sexual Assault	19	17
Robbery	3	3
Assault	102	79

<b>Crimes Against Property</b>	<b>2014</b>	<b>2015 YTD</b>
Break & Enter	66	84
Auto Theft	40	25
Theft	264	195
Mischief	127	114

<b>Other Crime</b>	<b>2014</b>	<b>2015 YTD</b>
Fraud Investigations	73	83
Drug Investigations	150	127

<b>Other Investigations</b>	<b>2014</b>	<b>2015 YTD</b>
Domestic Disputes	149	131
Missing Persons	27	19

<b>Crime Breakdown 2015 YTD</b>	<b>North Wellington</b>	<b>Centre Wellington</b>	<b>South Wellington</b>
Homicide	1	0	1
Sexual Assault	9	4	3
Robbery	2	0	1
Assault	38	20	19
Break & Enter	39	19	27
Auto Theft	7	4	13
Theft	77	44	68
Mischief	33	34	42
Fraud Investigations	25	37	24
Drug Investigations	37	34	41
Domestic Disputes	45	54	31
Missing Persons	12	7	2



## Traffic

### Enforcement

<b>Traffic</b>	<b>2015 YTD</b>
Speeding	3,863
Seatbelt Offences	102
Careless Driving	134
Drive Under Suspended	54
Distracted Driver Offences	229
Other Moving Violations	161
Equipment and Other HTA	1,332
No Insurance - CAIA	38
<b>Other Provincial Acts</b>	<b>2015 YTD</b>
Liquor Licence Act	147
Trespass to Property Act	91
Other CAIA	35
Other Provincial Acts	22
<b>By-Law Offences</b>	<b>2015 YTD</b>
By-Law Offences (General)	1,214
Taxi By-Law	0
<b>County of Wellington OPP Year To Date Total</b>	<b>7,218</b>
<b>West Region Traffic Unit Year To Date Total</b>	<b>204</b>
YTD Total Traffic	5,913
YTD Total Other Provincial	295
YTD Total By-Law	1,214
<b>2015 Year to Date POA Charges</b>	<b>7,422</b>
2014 Year to Date POA Charges	7,103

### Drinking and Driving

<b>Impaired Driving</b>	<b>2014</b>	<b>2015 YTD</b>
R.I.D.E. Vehicle Stops	16,236	14,031
Roadside Alcotests	286	227
Warn Suspensions	89	64
ADLS Suspensions	81	58
Persons Charged	74	58

### Racing

<b>2015 YTD HTA Sec. 172 Impoundments</b>	<b>Previous Year Totals</b>	
<b>38</b>	2012	82
	2013	93
	2014	108

### Parking Enforcement

<b>Municipality</b>	<b>2014</b>	<b>2015 YTD</b>
Centre Wellington	443	279
Erin	7	37
Puslinch	78	21
Guelph / Eramosa	124	257
Wellington North	13	16
Mapleton	9	9
Minto	10	23
County / Other	0	0
<b>Parking Totals</b>	<b>684</b>	<b>642</b>



## Traffic

### Suspect Apprehension Pursuits

2015 YTD Pursuits / Fail to Stop for Police	Previous Year Totals	
5	2012	17
	2013	8
	2014	9

## Traffic Initiatives

### R.I.D.E.

The Wellington County Traffic Unit conducted a total of 30 R.I.D.E initiatives across the County checking 3,609 vehicles, performing 52 roadside tests; resulting in 12 suspensions and 15 drinking and driving charges. The Wellington County Traffic Unit also participated in the Spring Seatbelt Campaign in conjunction with Canada Road Safety Week.

### Speed Spy

The Traffic Unit has also begun the strategic deployment of Speed Spy units in multiple locations across the County based on traffic complaint and high traffic volume areas. Deployment of the Speed Spy units has been completed in collaboration with Wellington County and Municipal Roads personnel. This partnership has proven very successful as raw data has been shared to assist to better understanding the issues. Speed information is analyzed and interpreted by the OPP for a more strategic, intelligent deployment of resources as necessary.

### Canada Road Safety Week / Victoria Day Long Weekend

Canada Road Safety Week ran from May 12<sup>th</sup> – 18<sup>th</sup> this year coinciding with the Victoria Day long weekend. Wellington County OPP was out in full force throughout the campaign. Resources were focused specifically on the long weekend where rules of the road were enforced as many headed out to cottage country and the many attractions within the County. Once again Wellington County OPP proactively patrolled and enforced the “Big Four” major causes of death and injury on Ontario roadways; impaired driving, aggressive driving, distracted driving and failure to wear or improper use of a seatbelt.

The results from the weekend enforcement are;

- 158 Speeding charges
- 5 Seatbelt charges
- 3 Distracted driving charges
- 3 Impaired charges
- 3 Careless driving charges

### Automated Licence Plate Reader (A.L.P.R.)

The strategic deployment of the ALPR Cruiser continues to detect offences in addition to “licence plates in poor standing”. During the month of May Wellington County Detachment conducted 70 operating hours in the Automated Licence Plate Reader (ALPR cruiser). Officers laid a total of 32 charges under various Provincial Offence Acts, along with two charges under the Controlled Drugs and Substances Act, one Warn Range driver's licence suspension and eight additional roadside breath tests on drivers who had consumed alcohol.

### Marine Patrol

The Wellington County Traffic Unit took to the waterways during the month of May logging a total of 47 marine patrol hours on area lakes. Operator Recertification training was also conducted.



## Traffic

### Motor Vehicle Collisions

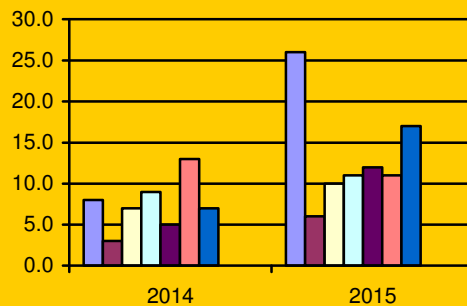
Month	Victims			Collisions								
	Total Victims	Persons Killed	Persons Injured	Total MVC	Fatal	PI	PD	Alcohol Involved			CMV	SMV
								Yes	No	Unk		
JAN	41	1	40	195	1	26	168	1	181	13	17	104
FEB	47	0	47	161	0	29	131	1	151	7	24	55
MAR	22	0	22	111	0	13	97	0	103	8	12	48
APR	18	0	18	110	0	16	94	5	88	16	9	45
MAY	26	0	26	106	0	20	86	1	92	13	6	46
JUN												
JUL												
AUG												
SEP												
OCT												
NOV												
DEC												
<b>TOTAL</b>	<b>154</b>	<b>1</b>	<b>153</b>	<b>683</b>	<b>1</b>	<b>104</b>	<b>576</b>	<b>8</b>	<b>615</b>	<b>57</b>	<b>68</b>	<b>298</b>

### Yearly Collision Summary

Collision Type / Characteristic	2009	2010	2011	2012	2013	2014	2015
Total Reportable MVC	1,918	1,813	1,976	1,875	2,095	1,959	683
Property Damage MVC	1,694	1,525	1,649	1,565	1,761	1,758	576
Personal Injury MVC	213	282	320	302	326	195	104
Fatal MVC	11	6	7	8	8	6	1
Persons Killed	11	6	7	9	9	6	1
Persons Injured	314	425	463	442	481	330	1153
Alcohol Involved	76	42	57	63	37	40	8
<b>Total MVC</b>	<b>1,918</b>	<b>1,813</b>	<b>1,976</b>	<b>1,875</b>	<b>2,095</b>	<b>1,959</b>	<b>683</b>

### Car vs Deer Collisions

Municipality	2014	2015 YTD
Centre Wellington	8	26
Erin	3	6
Puslinch	7	10
Guelph / Eramosa	9	11
Wellington North	5	12
Mapleton	13	11
Minto	7	17
City of Guelph	0	0
Provincial Highways	0	0
<b>Total Collisions</b>	<b>52</b>	<b>93</b>





## Youth Crime

### Secondary School Resource Officer Program

*School statistics are being reported by school year (September – June)*

#### 2014 – 2015 Criminal Code - Calls for Service (CFS)

Incident Type	CWDHS	EDHS	NDSS	WHSS	YTD Total
Assault	7	4	4	13	28
Mischief	4	1	5	7	17
Threats/Intimidation(Bullying)	13	2	6	13	34
Other Criminal/Cyber	20	6	7	22	55
Theft	4	7	1	9	21
Drugs	7	4	5	24	40
<b>Sep 2014 – Jan 2015 (CFS)</b>	<b>55</b>	<b>24</b>	<b>28</b>	<b>88</b>	<b>195</b>
Diversions	7	15	20	25	67
Warnings	7	10	7	14	38
Charges	3	3	4	1	11
<b>Sep 2013 – Jun 2014 (CFS)</b>	<b>43</b>	<b>46</b>	<b>73</b>	<b>78</b>	<b>240</b>

#### 2014 – 2015 Provincial Offence - Calls for Service (CFS)

Incident Type	CWDHS	EDHS	NDSS	WHSS	YTD Total
Highway Traffic Act	18	8	11	11	48
Liquor Licence Act	1	0	3	5	9
Trespass to Property	4	13	4	12	33
MHA/Counselling	2	4	0	41	47
<b>Sep 2014 – Jan 2015</b>	<b>25</b>	<b>25</b>	<b>18</b>	<b>69</b>	<b>137</b>
Diversions	1	0	0	4	5
Warnings	9	9	4	7	29
Charges	0	1	2	3	6
<b>Sep 2013 – Jun 2014(CFS)</b>	<b>15</b>	<b>6</b>	<b>26</b>	<b>24</b>	<b>71</b>

## Meetings / Presentations

### Centre Wellington DHS

- PC SMITH held a law class presentation and participated in mock trials
- The SRO also attended the Tech class and held a presentation on road safety
- Detachment Commander attended and spoke to Ms. Ballantyne's Grade 12 Law Class

### Erin DHS

- PC MACDONALD attended the EDHS Prom on May 29<sup>th</sup> held in Caledon
- The SRO participated in mock criminal trials for law classes at EDHS and he also assisted PC MULLAN with a display/presentation by providing Public Order equipment
- PC MACDONALD assisted students in the filming of two school projects
- PC MACDONALD also conducted a presentation on domestic abuse to a class and provided resources to students



### **Norwell DSS**

- PC MULLAN held five presentations on Distracted Driving and Water Safety for five different grade 11 classes
- PC MULLAN attended the Career/Volunteer Fair for students and the public at Norwell DSS

### **Wellington Heights SS**

- PC WATT held a presentation to a law class concerning criminal & provincial law. She also attended a second law class with Canine Handler Barry Reid and Chantel BEIRNES, Forensic/Ident unit
- PC WATT assisted in organizing a very successful Wellington North, Shop with a Cop

## **Notable School Related Incidents and Events**

### **Centre Wellington DHS**

- Traffic complaints continue to be an issue at CWDHS. Local residents attended the school to complain about student driving habits. The SRO educated and warned students that any further conduct will result in charges being laid
- Complaints about inappropriate photographs and comments on social media continue within the school. Photos continue to circulate on social media that resemble some students, but are in fact fakes/look-a-likes. The SRO and school staff continue to educate students on internet safety
- Students have been warned regarding potential school pranks during the last week of school. The school has a zero tolerance policy in-place to deter damage and ensure student safety at the end of last school year
- SRO became aware of an after Prom party which was disseminated to frontline officers

### **Erin DHS**

- An ATV operator was charged with Trespassing after the SRO witnessed a young male driver on school property on multiple occasions during school hours
- A student was arrested after assaulting another student in class. One student was suspended indefinitely

### **Norwell DSS**

- Clean up of a residential property that backs onto a student parking lot took place during the month of May resulting in three full garbage bags being removed and a car bumper
- PC MULLAN contacted the parents of a student planning to hold an after Prom party. The SRO discussed responsible steps for care

### **Wellington Heights SS**

- Six students were caught smoking illegal drugs during lunch hour. One student claimed possession and was diverted, the other five students were issued warnings. In collaboration with school officials all students were suspended for three days
- Four students were caught with illegal drugs during lunch hour, one student claimed possession. The student was warned and suspended for one week, the other three students were suspended for three days
- A student reported a sexual assault off school property but during school hours. Information was turned over the Major Crime Unit for follow-up.



## Canine Unit

### 2015 YTD Calls for Service and Hours

Occurrence Type	Initial (Calls)	Initial (Hours)	Assist (Calls)	Assist (Hours)	2014 (Calls)	2014 (Hours)
Occurrence Totals (OPP)	27	146.00	0	0.00	27	146.00
Occurrence Totals (Other)	0	0.00	0	0.00	0	0.00
Occurrence Totals (Combined)	27	146.00	0	0.00	27	146.00

Canine Handler: Provincial Constable Barry REID

### Notable Incidents and Events

**Date:** May 6, 2015

**Location:** Guelph

Canine Unit static display at Guelph-Wellington Emergency Preparedness Day attended by hundreds of school children.

**Date:** May 7, 2015

**Location:** Wellington

Canine Unit presentation and demonstration at the "Safe Kids" community event.

While conducting patrols of Drayton police observed a suspicious vehicle attempt to evade police. The vehicle drove to the rear of a business and the driver began to leave the vehicle on foot. The driver appeared deterred by barking dogs in the truck and he refused to identify himself and made comments consistent with "Freeman of the Land" beliefs. The suspect was arrested and identified, a search incident to arrest located items indicating that the male party was involved with a marihuana grow operation. The suspect also had outstanding arrest warrants.

Cambridge OPP Detachment had supported a fundraising charity auction by donating a Detachment tour for the auction winner. Canine Unit attended and provided an introduction to the dogs and a tour of the vehicle and a demonstration search.

**Date:** May 10, 2015

**Location:** Elora

Wellington OPP responded to a fail to remain motor vehicle collision. The suspect vehicle had struck a building causing heavy damage before being driven from the scene. Officers followed a trail of bricks for about 1km locating the vehicle stuck in a field. Upon seeing officers the driver fled on foot and Canine was dispatched to assist with locating the suspect. Canine was cancelled when the suspect showed up at the original crash scene.

**Date:** May 12, 2015

**Location:** Wellington Heights Secondary School

Canine Unit presentation and demonstration for the Grade 11 Law Class at Wellington Heights Secondary School.

**Date:** May 13, 2015

**Location:** Niagara Detention Centre

The Canine Unit was scheduled to assist Corrections with the drug search of a facility. Upon arrival, Canine was advised that the search was cancelled due to numerous fights ongoing inside the facility.



**County of Wellington OPP  
Report for the Police Services Board**

**Date: May 15, 2015**

**Location: Wellington**

Wellington OPP responded to an ongoing family dispute involving a male party that has been previously arrested and release on bail conditions not to attend the family residence. Information was received by police from family members that he may be back at the property. The Canine Unit attended with one ERT and two uniform officers. Shortly after arriving on the property, uniform officers spotted the suspect who ran through a pile of abandoned vehicles. The suspect turned back towards the officer and was taken into custody. CEW was deployed. Knox had no direct contact with suspect.

Wellington OPP officers investigated a report of male youth AWOL from Portage Youth Facility. An officer observed the youth walking on a residential street and was assaulted by the suspect, who fled on foot. The Canine unit was dispatched after officers lost sight of the suspect. While on route the suspect was arrested in a backyard nearby.

**Date: May 20, 2015**

**Location: Wellington**

Deterrent patrols of rural parking areas at trail heads due to a trend of thefts from vehicles at these locations.

**Date: May 21, 2015**

**Location: Wellington**

The Canine unit responded to a call of a theft in progress, the suspect was on an ATV and fled from officers onto a trail. Canine attended the area, but the ATV was not located.

**Date: May 27, 2015**

**Location: Erin Township**

While on duty the Canine Team responded to assist Wellington OPP officers with a domestic/weapons related incident. Canine and several uniform members responded to the scene, setting up and maintaining containment of the residence until ERT arrived and took over. ERT team members entered the residence and arrested a suspect inside without incident.



## OPP K.I.D.S Program

Coordinator: Provincial Constable Kelly Krpan

### MEETINGS / PRESENTATIONS:

- 8 schools actively participating in the OPP KIDS Program and going into week 3
- Wednesday May 6, 2015, PC Krpan attended a full day of "Front Line Officer Training" held in Walkerton by Professional Standards of the OPP
- Thursday May 7th, 2015 at 6:00pm, PC Krpan attended Fergus Home Show to showcase the OPP KIDS Program as part of the booth that was set up
- May 14th, 2015 PC J. Beaupre job shadowed PC Krpan at Kenilworth Public School for session 5 of the OPP KIDS Program
- May 25th, 2015 PC Krpan conducted a lockdown drill with Erin Public School with positive results
- May 29th, 2015 Centre Peel Public School graduated from the OPP KIDS Program

### AREAS OF CONCERN / NEW INITIATIVES:

- On May 7th, 2015 several 911 calls were made by some grade 6 students at Erin Public School while on a bus trip. On-duty officers responded that day to rectify the situation as the calls were a prank with some references made to "ISIS". There were several boys suspended from school for their actions. The grade 6 teacher of Erin Public School requested that PC Krpan speak to the class as a whole about the seriousness of the 911 calls made
- May 11th, 2015 PC Krpan attended Erin Public School for OPP KIDS and spent time talking to the kids about the 911 incident
- May 13th, 2015, Principal Mr. LeBlanc from Erin Public School requested PC Krpan attend the School in the morning as two of the boys who were suspended were returning to school. PC Krpan spoke with the boys with the Principal present, making sure they were aware of their negative actions and ready for their classroom
- May 15th, 2015 Principal Mr. Jeff Crawford from Drayton Heights contacted PC Krpan and asked for assistance in speaking with two boys that are presently suspended from school due to sexual misconduct
- May 19th, 2015 PC Krpan attended Drayton Heights Public School as per the request from Principal Jeff Crawford to speak with the two boys independently about their actions of sexual misconduct and their re-entry back into the classroom
- May 19th, 2015 the last two boys from Erin Public School who were suspended were returning to school. PC Krpan attended the school as per the request of Mr. LeBlanc. PC Krpan spoke to the boys while their parents were present with regard to the seriousness of their actions



## Auxiliary Unit

Coordinator: Provincial Constable Mike POLAN  
Unit Commander: Auxiliary S/Sgt. B. MC GIMSIE

### Notable Incidents and Events

Auxiliary Staff Sergeant MCGIMSIE reported a busy month for the Wellington County Auxiliary Unit. Auxiliary members participated in multiple spring-time events across the County, while continuing to complete annual use of force and car seat re-certification training.

Below is a list of events the Unit attended during the month of May:

- Fergus Home Show
- Rockwood Fire Hall Open house – Rollover Simulator
- Drug Drop-Off Day, Centre Wellington Operations Centre
- Minto Safe Kids Day – Rollover Simulator
- Crime Stoppers Mulch Sale, Centre Wellington Sports Plex
- Guelph Emergency Preparedness Day
- Car Seat Re-certification
- Commissioner's Own Pipes & Drums – Recruit Graduation & Police Memorial
- Annual Use of Force/firearms training
- Monthly Auxiliary meeting and training.
- Patrol ride-a-longs
- Administrative duties



## Media

Provincial Constable Bob BORTOLATO, Provincial Constable Cheri ROCKEFELLER & Provincial Constable Marylou SCHWINDT

## Notable Incidents and Events

- During the month of May the Media Unit issued 44 media releases for a year to date total of 240 media releases

## McHappy Day

Wellington County OPP participated in McDonalds restaurants McHappy Day which was held on May 6, 2015 across Canada. A portion of the proceeds from the sale of certain food and beverages are directed towards the Ronald McDonald House Charities in Canada.



PC Marylou SCHWINDT taking part in McHappy Day



### National Emergency Preparedness Week

The Township of Guelph/Eramosa Fire Department in conjunction with their Emergency Response Partners hosted an Open House and Information Day on May 2, 2015. The event was held during National Emergency Preparedness Week which ran from May 3 – 9, 2015.



Aux. Constable Heather UNWIN & Aux. Constable Alida HESSELINK holding a demonstration of the Rollover Simulator at the Emergency Preparedness Information Day at the Rockwood Firehall



Aux. Constable Neil MOSSMAN & Aux. Constable Neil WATTERSON at the Emergency Preparedness Information Day at the Rockwood Firehall



Guelph-Wellington EMS Teresa EVANS, PC Barry REID & Jag along with two attendees  
at the Emergency Preparedness Information Day at the Rockwood Fire Hall



## Administration

### Revenue

Year	County	Provincial	Total
2010	\$87,122.04	\$7,899.10	\$95,012.14
2011	\$81,274.66	\$9,233.56	\$90,508.22
2012	\$75,836.60	\$5,043.55	\$80,880.15
2013	\$70,202.29	\$5,373.66	\$75,575.95
2014	\$84,301.22	\$6,590.25	\$90,891.47
2015	\$35,894.50	\$2,485.75	\$38,380.25

### Paid Duties

Year	Paid Duties	Officers	Hours	Admin Fees
2011	207	446	2,455.25	\$5,325.00
2012	165	312	1,890.75	\$2,775.00
2013	227	469	3300.00	\$1,575.00
2014	239	433	3076.00	\$2,625.00
2015	101	191	1,494.00	\$450.00

## Personnel

### Complaints

Complaint Type by Status	2010	2011	2012	2013	2014	2015
Complaints Received	13	16	16	12	18	3
Complaints Resolved	8	8	5	1	3	1
Complaints Unfounded	2	6	8	5	6	1
Complaints Withdrawn	3	1	2	4	4	1
Complaints Ongoing	0	1	1	2	5	0

No	Complaint Type	Status	No	Complaint Type	Status
1	Public	Closed			
2	Public	Closed			
3	Public	Closed			

**Internal Complaint** is an allegation by someone who is not a member of the public concerning the policy, services, local policies of a contract location, or the conduct of an employee or volunteer of the OPP and includes a WDHP allegation, and/or an allegation of workplace violence.

**Public Complaint** is a complaint by a member of the public concerning the policy, services, local policies of a contract location, or the conduct of an employee of the OPP.



## Personnel

### Acknowledgements

Date	Member(s)	Particulars
25May2015	PC M. WRIGHT	S/Sgt. J. HUNJAN received a phone call from Guelph Police Service Sgt. RUSSELL regarding PC M. WRIGHT. Sgt. RUSSELL advised that PC WRIGHT had looked after a motor vehicle collision that occurred on Highway 6 and County 22. Sgt. RUSSELL asked if PC WRIGHT could check on the well-being of one of the involved ladies who was struggling with some issues. PC WRIGHT attended her residence without question and sat down and had a discussion with the lady. Upon departing the residence Sgt. RUSSELL received a call from the lady who praised how professional, understanding and sincere PC WRIGHT was and how he was a "credit to the OPP".

### Notable Events

#### Noteworthy Information and Events

##### Debit Machine Implementation

Working closely with County staffer Kelly-Ann Wingate debit/credit machines were physically installed in the three Wellington County Operation Centres. Transaction processes were coordinated with Wellington County and OPP Administrative Staff were given a tutorial on how to operate the units. On May 1, 2015 the units were put into operation. From day one they have seen significant use and their installation have received much praise from the public and staff at all three locations. Efficiencies have been realized. Ontario Provincial Police Business and Financial Services and the Ontario Public Service staff have since attended to meet and discuss implementation of this technology as Wellington is one of the first OPP locations in the province to have this capability.

Prior to their installation the OPP only accepted cash. This technology will better serve the public, be more efficient, provide better tracking and reduce inherent risk in handling cash.

##### IMPACT Team Update

On Monday, May 4, 2015 two CMHA clinicians officially co-located to the Centre Wellington Operations Centre effectively launching the first stage of the Integrated Mobile Police and Crisis Team (IMPACT). Both clinicians work Monday to Friday from 9:00am – 5:00pm directly out of the Centre Wellington Operations Centre, they have been assigned and dedicated to actively assist Wellington County OPP in a proactive fashion. At this time, both clinicians will not be responding directly to frontline calls for service until the MOU has been vetted by legal. They are available for officers to contact and consult with when dealing with members of the public who suffer from mental health and/or addiction issues. Several successes have already been realized.



### Prescription Drug Drop-off Day

Prescription Drug Drop-off Day was held on Saturday, May 9, 2015 from 10:00am to 3:00pm. It is supported by the OPP, Ontario Association of Chiefs of Police (OACP), the Government of Ontario, Public Safety Canada and the Guelph Wellington Drug Strategy Committee. This public safety initiative encourages Ontario residents to dispose of old and unused prescription medication in a secure and environmentally friendly manner.

The drop off location in Wellington County this year was the Centre Wellington Operations Centre, the total weight dropped off was 4.3 kg of prescription drugs.

### Norwell Job, Career and Volunteer Fair

On Wednesday May 13, 2015 the Norwell Co-op Department at Norwell District Secondary School held the Norwell Job, Career and Volunteer Fair. The event was attended by High School students and open to the public in the afternoon. The event allowed attendees to take a tour of Norwell DSS to see how the High School is preparing students for the workplace. The event was organized by Mr. Tyson SMITH, Norwell DSS teacher.

Provincial Constable Patrick MULLAN attended on behalf of the Wellington County OPP. Below are some pictures from the event.



PC Patrick MULLAN and students in attendance at the Norwell Job, Career and Volunteer Fair



One of the many displays available to attendees at the Norwell Job, Career and Volunteer Fair



## Safekids Day

In February of 2013, Provincial Constable Todd PRIDHAM was approached by Callise FOERTER from the Minto Fire Department, in regards to planning a Safety Day in the Town of Minto. PC PRIDHAM is a member of the Minto Safe Community Committee. A partnership was formed and the Minto Safekids Day was set for May 31st and June 1st 2013 at the Harriston Arena. This became an annual event which took place in 2014 and 2015.

On Friday May 1<sup>st</sup>, 2015 from 9:00am to 2:00pm, approximately 250 Grade 4-6 students from Minto Clifford Public School and Palmerston Public School attended for two hour intervals to learn about a variety of safety information.

Participants included Minto Fire Department had their display and other educational components. The Minto Safe Community Committee provided a Kids Bike Rodeo and a display booth. Wellington County OPP displayed their Rollover Simulator, the OPP ATV's and an OPP Police Vehicle. Wellington County Emergency Management, Electrical Safety Organization, Wellington Dufferin Guelph Public Health, Humane Society, Brenmar Transport and the Minto Lifeguards had displays and activities for the children.

Judging by the positive feedback from the host organizations, students and teachers, the day was a complete success. The teachers from the schools liked the fact that they could get exposure to many different agencies, all in one location. The Safekids Day will continue to be an annual event for the Town of Minto. This event was a great opportunity to mobilize and partner with other local agencies, to work towards a safer community.



PC Todd PRIDHAM and students in attendance at the 2015 Minto Safekids Day



Wellington County Auxiliary Unit members demonstrating the Rollover Simulator to students at The 2015 Safekids Day



# COUNTY OF WELLINGTON

---

## COMMITTEE REPORT

**To:** Chair and Members of the Roads Committee and Police Services Board  
**From:** Gordon J. Ough, P. Eng., County Engineer  
**Date:** Tuesday, June 09, 2015  
**Subject:** **Brisbane Public School**

---

### Background:

Attached for easy reference is the staff report that was considered by the Roads Committee on March 10, 2015 related to the safety concerns associated with parents loading and offloading young students on the shoulders in front of the Brisbane Public School on both sides of Wellington Rd 124 (former Provincial Highway 24).

Gary Cousins and I have met twice with staff at the Upper Grand Public School Board to explore changes that could take place on the school property and we were encouraged by the cooperation and willingness of the staff to consider on site options.

The Committee indicated that it was comfortable moving forward with the designation of a no stopping zone, in the vicinity of the school on the shoulder on the opposite side of road from the school, and that a by law should be in place by the end of June so that the signs could be erected prior to the opening of the school in September.

The other possible options that were still in play but not to be acted on until the results of changes that the school board might be able to do on site are in place and their effectiveness evaluated, include: installing flashing lights to remind motorists that there is a school nearby, piping the ditch and widening the shoulder of the road on the school side of the road, establishing a "Community Safe Zone" as requested by the delegation in February, and, reducing the 60km/hr zone to a 40km/hr zone during the times that children are being picked up from or delivered to school.

At the time this report was prepared the findings or recommendations of the staff at the school board were not yet known.

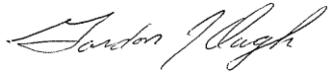
Concerns have been expressed by some, that a no stopping zone without regular enforcement will be of little value. Appointing a County By-law officer to pay special attention to this and perhaps other problem areas is an option that would reduce the dependence on the County OPP to enforce this no stopping zone.

**Recommendation:**

That a bylaw to prohibit vehicles from stopping on the shoulder of Wellington Road 124 opposite the Brisbane Public School effective August 1, 2015 be prepared and presented to County Council; and,

That a bylaw to appoint a County Bylaw officer be prepared and presented to County Council for consideration.

Respectfully submitted,

A handwritten signature in cursive script, appearing to read "Gordon J. Ough".

Gordon J. Ough, P. Eng.  
County Engineer



## COUNTY OF WELLINGTON

---

### COMMITTEE REPORT

**To:** Chair and Members of the Roads Committee  
**From:** Gord Ough, County Engineer  
**Date:** Tuesday, March 10, 2015  
**Subject:** Elementary Schools on County Roads – Drop off & Pick up on road side

---

#### **Background:**

It is my understanding that several years ago there was an elementary school in Ospringle and an elementary school in Brisbane. The enrolment at the school in Ospringle declined to a level that inspired the school board to close the school in Ospringle and transfer the student population to the school in Brisbane. The increase of students at the school in Brisbane presumably resulted in an increase in bus traffic, staff and staff parking, as well as additional play and sports field development.

The Brisbane School was built as a bused school and no on site accommodations were protected for parents to drop off or pick up students either when it was originally built or when the students that were attending the school in Ospringle were moved over to the school in Brisbane.

Two additional grade levels (Junior Kindergarten and Senior Kindergarten) were added to the Brisbane School in recent years with busing being the officially designated method of accessing the school.

It is my understanding from the delegation that attended the County Roads Committee in February that many parents of the younger students have chosen to drive their children to school and that due to the limited vehicular space on site are choosing to park on both shoulders of former Hwy 24, now known as Wellington Road 124, to drop off their children in the morning and to pick up their children in the afternoon.

The parents are reportedly expressing concern for the safety of their children and themselves during these daily loading and unloading activities and are asking the County of Wellington to lower the speed limit in front of the school to 40km/hr from the existing 60km/hr and to install lights on the speed limit signs that flash during the peak student loading and unloading times as well as for "school events."

In addition to the speed reduction with the flashing light option, a second option of filling in the roadside ditch to accommodate the loading and unloading of the junior and senior kindergarten students was discussed briefly.

No one at the February Roads Committee Meeting seemed to consider either of these two options as safe options, whether one or both options were to be implemented.

There was some discussion regarding who was responsible for causing the problems being discussed and who should be responsible for fixing or at least improving the situation.

At the February Committee Meeting staff committed to look at the schools on other County Roads to determine whether the Brisbane issue was the tip of an iceberg or more or less one of a kind and to bring that information to the March Roads Committee Meeting. I can report that the Brisbane School seems to be unique.

The estimated cost of the purchase and the installation of the signage and flashing lights is \$10,000.00, and the estimated cost of piping and filling in the ditch to widen and pave the shoulder on one side is \$ 40K – \$50K.

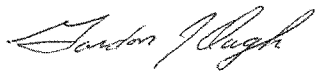
The option of doing whatever it takes to accommodate the loading and unloading of the junior and senior Kindergarten children on school property, which may well involve the elimination of some outside student activity space, was not prepared for this report.

Copies of the letters from the Upper rand District School Board and from the Brisbane Public School Parent Council that were presented to the County of Wellington Roads Committee at its February committee meeting are attached for easy reference.

### **Recommendation:**

That this report be received for information.

Respectfully submitted,

A handwritten signature in cursive script, appearing to read "Gord Ough".

Gord Ough,  
County Engineer



## UPPER GRAND DISTRICT SCHOOL BOARD

**Mark Bailey**

Trustee, City of Guelph (Wards 1 & 5), Upper Grand District School Board

Board Office: 500 Victoria Road N. Guelph, ON N1E 6K2

Email: mark.bailey@ugdsb.on.ca

Tel: 519-822-4420 ext. 735 or Toll Free: 1-800-321-4025

December 17, 2014

George Bridge, Warden  
The Corporation of the County of Wellington  
74 Woolwich Street  
Guelph ON N1H 3T9

Dear Mr. Bridge:

On behalf of the Upper Grand District School Board, I am asking for the County's consideration in a matter of student safety along Country Road 24 in front of Brisbane Public School ("BPS"), Town of Erin.

On October 7, 2014 members of BPS Parent Council and a concerned group of Brisbane parents attended a meeting with the school principal their School Board Trustee and representatives from the OPP, Wellington County and the School Board regarding road safety issues on highway 24, particularly during school drop off and pick up times.

At drop off and pick up times and school events, parents are required to park on the shoulder along both sides of Highway 24 in front of the school. Highway 24 is a County road and is a designated truck route. The speed limit in front of the school is 60 kmh (reduced from 80 kmh), but anecdotal evidence from parents of Brisbane students (and reports from the OPP who have ticketed in the area) indicate that there are violators who exceed the speed limit by more than 25 km/hr. The high traffic volume and speeds make it dangerous for children and their families. There has been at least one vehicular accident at the site this school year.

We are asking that the section of Highway 24 in front of the school be designated a school safety zone with a reduced speed limit of 40 kmh during drop off and pick up times and school events. This should include the installation of a flashing amber school safety zone sign.

We would very much appreciate your timely support and assistance with this matter.

Yours very truly,

Mark Bailey  
Chair

### Upper Grand District School Board

• Mark Bailey, Chair  
• Martha MacNeil

• Marty Fairbairn, Vice-Chair  
• Susan Mozlar

• Linda Busuttill  
• Bruce Schieck

• Kathryn Cooper  
• Lynn Topping

• Barbara Lustgarten Evoy  
• Barb White

# BRISBANE PUBLIC SCHOOL PARENT COUNCIL



February 6, 2015

County of Wellington Roads Committee Members  
The Corporation of the County of Wellington  
74 Woolwich Street  
Guelph, ON N1H 3T9

Dear Sirs:

On behalf of Brisbane Public School ("BPS") Parent Council and parent community, I request your consideration in a matter of student safety along Highway 24 in front of BPS in the Town of Erin.

At school morning drop off, afternoon pick up times and school events, parents are required to park on the shoulder along both sides of Highway 24 in front of the school. Highway 24 is a County road and is a designated truck route. The speed limit in front of the school is 60kmh (reduced from 80kmh), but abundant anecdotal evidence from parents of BPS students (and reports from the OPP who have ticketed in the area) indicate that there are violators who exceed the speed limit by more than 25km/hr. The high traffic volume and speeds make it dangerous for children and their families who must cross the road to reach their vehicles or load small children into vehicles. There has been at least one vehicular accident at the site this school year. As a lawyer by profession, I recognize the liability issues that may arise for the County in the tragic event of injury to a child or parent.

The addition of junior kindergarten and then the further addition of all day/every day kindergarten, has resulted in an increase in the size of the student body at BPS. The school parking lot is insufficient to accommodate the increased number of cars that require access to the school. We have explored with the UGDSB several options to address this issue, including increasing the size of the parking lot and imposing staggered entry/exit times. It is our understanding that any increase in the size of the parking lot would result in the infringement of the current playground area and require the removal of the baseball diamond which BPS students use on a daily basis during recess and physical education class. In addition, access to an expanded parking lot would be restricted during bus times, thus limiting flexibility in terms of coming and going, effectively trapping cars for certain periods. Staggered entry and exit times would result in staff being required to provide supervision in excess of the time periods permitted under the teachers' union collective agreement, and therefore is not feasible either.

The BPS community has rallied around this issue and we respectfully submit a petition signed by 320 parents/guardians whose children attend BPS. The petition urges you to act now to designate the section of Highway 24 in front of BPS a school safety zone with a reduced speed limit of 40kmh during drop off and pick up and times and school events, and install a flashing amber school safety zone sign.

Sincerely,

  
Rachel Ingram

Chair - BPS Parent Council

# Processing Activity Report

Page: 1

Data Type: Parking

Creation Date/Time: 01/06/2015 8:54:15 AM

Transaction dates of 01/05/2015 through 31/05/2015

**The County of Wellington**

Agency: All

Ticket Activity	Number	Value
<b>Tickets - Entered</b>		
AutoCite Ticket	0	\$0.00
Manually Entered Ticket	100	\$2,000.00
Skeletal Ticket	0	\$0.00
<b>Subtotal Tickets Entered</b>	<b>100</b>	<b>\$2,000.00</b>
<b>Tickets - Reactivations</b>		
Voids - Reinstated	0	\$0.00
Dismissals - Reversed	0	\$0.00
Waived - Reversed	0	\$0.00
<b>Subtotal Ticket Reactivated</b>	<b>0</b>	<b>\$0.00</b>
<b>Tickets - Removed</b>		
Voided	0	\$0.00
Dismissed	0	\$0.00
Waived	0	\$0.00
Skeletal Ticket Matches	0	\$0.00
<b>Subtotal Ticket Removed</b>	<b>0</b>	<b>\$0.00</b>
<b>Total Ticket Activity</b>	<b>100</b>	<b>\$2,000.00</b>
<b>Fines and Fees Added</b>		
Fines Added	0	\$0.00
Late Fees Added	22	\$220.00
NSF Fees Added	0	\$0.00
Other Fees Added	18	\$288.00
<b>Total Fines and Fees Added</b>	<b>40</b>	<b>\$508.00</b>
<b>Fines and Fees Removed</b>		
Fines Removed	0	\$0.00
Late Fees Removed	0	\$0.00
NSF Fees Removed	0	\$0.00
Other Fees Removed	0	\$0.00
<b>Total Fines and Fees Removed</b>	<b>0</b>	<b>\$0.00</b>
<b>Total Change from Ticket Activity and Added Fees</b>		<b>\$2,508.00</b>

Payment Activity	Number	Fine	Late Fee	NSF Fee	Service Fee	Total \$
<b>Ticket - Payments</b>						
Fully Paid	55	\$1,085.00	\$250.00	\$0.00	\$121.50	\$1,456.50
Partially Paid	0	\$0.00	\$0.00	\$0.00	\$0.00	\$0.00
Over Payments	0	\$0.00	\$0.00	\$0.00	\$0.00	\$0.00
<b>Subtotal Payments</b>	<b>55</b>	<b>\$1,085.00</b>	<b>\$250.00</b>	<b>\$0.00</b>	<b>\$121.50</b>	<b>\$1,456.50</b>
<b>Outside Payments</b>	<b>56</b>	<b>\$1,065.00</b>	<b>\$240.00</b>	<b>\$0.00</b>	<b>\$121.50</b>	<b>\$1,426.50</b>
<b>Ticket Payments Rescinded</b>						
Payment Reversals	1	\$20.00	\$10.00	\$0.00	\$0.00	\$30.00
NSF Reversals	0	\$0.00	\$0.00	\$0.00	\$0.00	\$0.00
<b>Subtotal Rescinded Payments</b>	<b>1</b>	<b>\$20.00</b>	<b>\$10.00</b>	<b>\$0.00</b>	<b>\$0.00</b>	<b>\$30.00</b>
<b>Refunded Overpayments</b>	<b>0</b>	<b>\$0.00</b>				<b>\$0.00</b>
<b>Payments</b>	<b>54</b>	<b>\$1,065.00</b>	<b>\$240.00</b>	<b>\$0.00</b>	<b>\$121.50</b>	<b>\$1,426.50</b>
<b>Total Fees Paid</b>				<b>0</b>		<b>\$0.00</b>
<b>Gross Revenue( Total Payments - Total Fees Paid )</b>						<b>\$1,426.50</b>
<b>Adjustments</b>				<b>0</b>		<b>\$0.00</b>
Uncollectable Fines and Fees						

Net Database Change( Total Change from Activity and Added Fees - Total Payments - Adjustments ) \$1,081.50



# COUNTY OF WELLINGTON

## COMMITTEE REPORT

**To:** Chair and Members of the Police Services Board  
**From:** Kelly-Ann Wingate, Parking, Licensing and Alarm Coordinator  
**Date:** Wednesday, June 10, 2015  
**Subject:** False Alarm Revenue Report

False Alarm revenue collected for 2015.

Month	False Alarms sent to the County for invoicing	Amount invoiced to customers	Amount collected to date
January	53	\$2,450	\$5,500
February	39	\$3,600	\$1,750
March	34	\$1,850	\$2,500
April	56	\$6,350	\$6,250
May	30	\$3,200	\$3,650
June			
July			
August			
September			
October			
November			
December			
2015 YTD	182	\$17,450	\$19,650
2014 Totals	514	\$34,700	\$34,650

### Recommendation:

That the June 2015 False Alarm Revenue Report be received for information.

Respectfully submitted,

Kelly-Ann Wingate  
Parking, Licensing and Alarm Coordinator