

The Corporation of the Town of Ajax

## GENERAL GOVERNMENT COMMITTEE

Thursday, March 20, 2014

**Open Meeting at 2:00 p.m.**

River Plate Room, Town Hall

65 Harwood Avenue South



## PRESENTATIONS

---

Anything in **blue** denotes an attachment/link. By clicking the links on the agenda page, you can jump directly to that section of the agenda. To manoeuvre back to the agenda page use the **Ctrl + Home** keys simultaneously. **OR** use the “*Bookmark*” icon to the left of your screen to navigate from one report to the next

### 4. Presentations / Discussion

3.5 [2013 Social Infrastructure Fund](#)

4.1 [Status Update-Design of Rain Gardens on Lake Driveway](#)

4.2 [St. Andrews Park- Pollinator Garden and Community Orchard](#)

# 2013 SOCIAL INFRASTRUCTURE FUND

Thursday March 20, 2014  
Cayla S. Da Silva  
Community Development Coordinator

# Social Infrastructure Funds

- Streams:
  - ▣ Community Organizations (not-for-profit)
  - ▣ Connecting Neighbours (SNS)
- Priority Areas:
  - ▣ Child and youth engagement
  - ▣ Neighbourhood development and capacity building
  - ▣ Engagement of communities of interest (i.e. cultural groups, LGTBQ, seniors, low income populations) to have greater access to community programs and service

# 2013 Projects

- Community Organizations - \$31,405.20
  - ▣ Community Development Council Durham  
*Ajax Immigrant Engagement Summit*
  - ▣ Durham Regional Police Service  
*Community Safety Day*
  - ▣ PFLAG Durham Region  
*Community Open House*
  - ▣ Girls Inc. of Durham  
*Mind + Body Leadership Initiative*
  
- Connecting Neighbours - \$2,769.00
  - ▣ Hermitage Park Neighbourhood  
*Rebuilding Hermitage Park Neighbourhood Watch*
  - ▣ Audley Neighbourhood  
*Audley Community Social & Neighbourhood Watch Training*

# Community Development Council Durham



- Ajax Immigrant Engagement Summit
  - One-day summit for newcomers and non-newcomers from diverse communities in Ajax
  - Participated in the development of multi-media products to capture cross-cultural experiences for education & engagement purposes
  - Developed a digital database of newcomer stories re: immigration and living in Ajax
  - Social media component
  - On-line videos created for public access

# Community Development Council Durham



**CDCD**  
COMMUNITY DEVELOPMENT  
COUNCIL DURHAM



Presents

**INCLUSIVE**  
*durham*

**Cross Cultural Summit**  
*"Embracing Newcomers in Ajax"*



You are invited to a Cross Cultural Dialogue between local residents  
and new immigrants in Ajax

*Meet, greet, learn, teach and share.*

To develop an understanding and appreciation of the journey of our  
new immigrant residents in Ajax.

**Tuesday, December 17, 2013**  
**2:30 pm to 5:30 pm**  
**458 Fairall St, Unit 5, Ajax, ON**

**Summit open to first 40 people to register**

**Please RSVP by December 13, 2013**

*Light Snacks will be served*



@CDCDDurham #InclusiveDurham



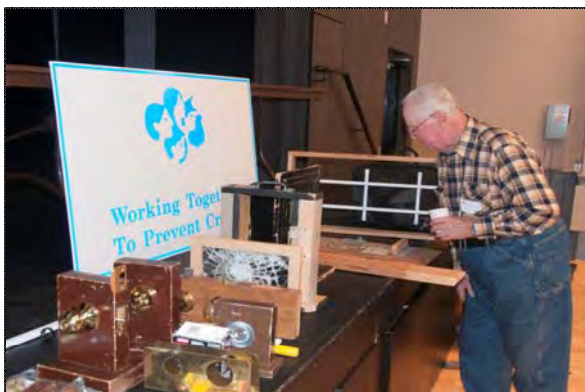
CDCDDurham

**For more information**

**CALL: 905-686-2661 ext. 117 EMAIL: VBilenduke@cdcd.org**

# Durham Regional Police Service

- Community Safety Day
  - One-day seminar with information sessions on community safety
  - Sessions provided education & training
  - Targeting at Ajax seniors, homeowners and businesses
  - On-line safety videos created for public access




# PFLAG Durham Region



- Community Open House
  - ▣ One-day open house with information sessions
  - ▣ Targeted at local organizations, businesses and community-based groups as well as the community-at-large
  - ▣ Education, awareness and outreach re: PFLAG's programs and supports offered in the community
  - ▣ DVD's created for service providers



# Girls Inc. of Durham Region

- 
- Girls Inc. Mind + Body Leadership Initiative
    - ▣ 4 week program for girls aged 6 – 18 to build self confidence and connectedness while developing knowledge, skills and attitudes to make healthy lifestyle choices
    - ▣ Focused on nutrition, physical activity, body image and stress management
    - ▣ Targeted newcomer girls, girls from visible minorities, from low income and single parent households and other diverse groups
    - ▣ Introduced new educational social media, online research capabilities, and film presentations

# Hermitage Park Neighbourhood

- Rebuilding the Hermitage Park Neighbourhood Watch
  - Social event to celebrate the successes of community building in Hermitage Park, while recruiting and raising awareness for future initiatives
  - Focused on park improvements, crime prevention and community events

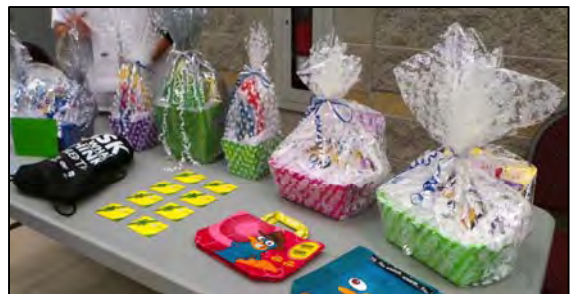


# Audley Neighbourhood



- Community Social/Neighbourhood Watch Training
  - ▣ An opportunity to bring neighbours from the Audley Neighbourhood together to meet with and socialize with one another
  - ▣ Neighbourhood Watch Information and Training
  - ▣ Recreation program “try-its”

# Audley Neighbourhood





# 2014 Social Infrastructure Fund

## 2014 Social Infrastructure Funds

### Now Accepting Applications!

#### **Connecting Neighbours Social Infrastructure Fund**

Resident(s) looking for funding to host an activity or event to connect their neighbourhood.

#### **Community Organizations Social Infrastructure Fund**

Not-for-profit organizations seeking financial support for an innovative program or service that serves Ajax.

**Application Deadline: Monday, March 24 by 4:30 p.m.**

**Apply at [www.ajax.ca/connectingneighbours](http://www.ajax.ca/connectingneighbours)**



For more information, contact Cayla S. Da Silva,  
Community Development Coordinator at  
[cayla.dasilva@ajax.ca](mailto:cayla.dasilva@ajax.ca) or 905-619-2529, ext. 7232.



2013  
SOCIAL  
INFRASTRUCTURE  
FUND

Thank you!



# GREENING OF LAKE DRIVEWAY USING RAIN GARDENS



# PROJECT OVERVIEW

- Project Background
- Objectives and Approach
- Rain Garden Locations
- Design Concepts
- Landscaping Concepts and Plantings





# PROJECT BACKGROUND

- ▶ Town of Ajax Stormwater Retrofit Master Plan Class EA completed in 2011
  
- ▶ Scope :
  - To investigate stormwater management retrofit opportunities and new stormwater management practices that will improve the stormwater quality that discharges to the nearshore of Lake Ontario.
  
- ▶ Range of solutions:
  - Constructing storm ponds and infiltration systems,
  - Community outreach,
  - Improvement to service levels and
  - Changes to municipal regulations and policies.



**Recommended the implementation of Low Impact Development (LID) pilot project at Lake Driveway**

# STUDY AREA



Lake Driveway from Harwood Ave to Finley Ave



# PROJECT OBJECTIVES

- ▶ Implement three (3) Rain Gardens pilot projects on Lake Driveway to:
  - Improve water quality
  - Beautify the neighborhood, park and community



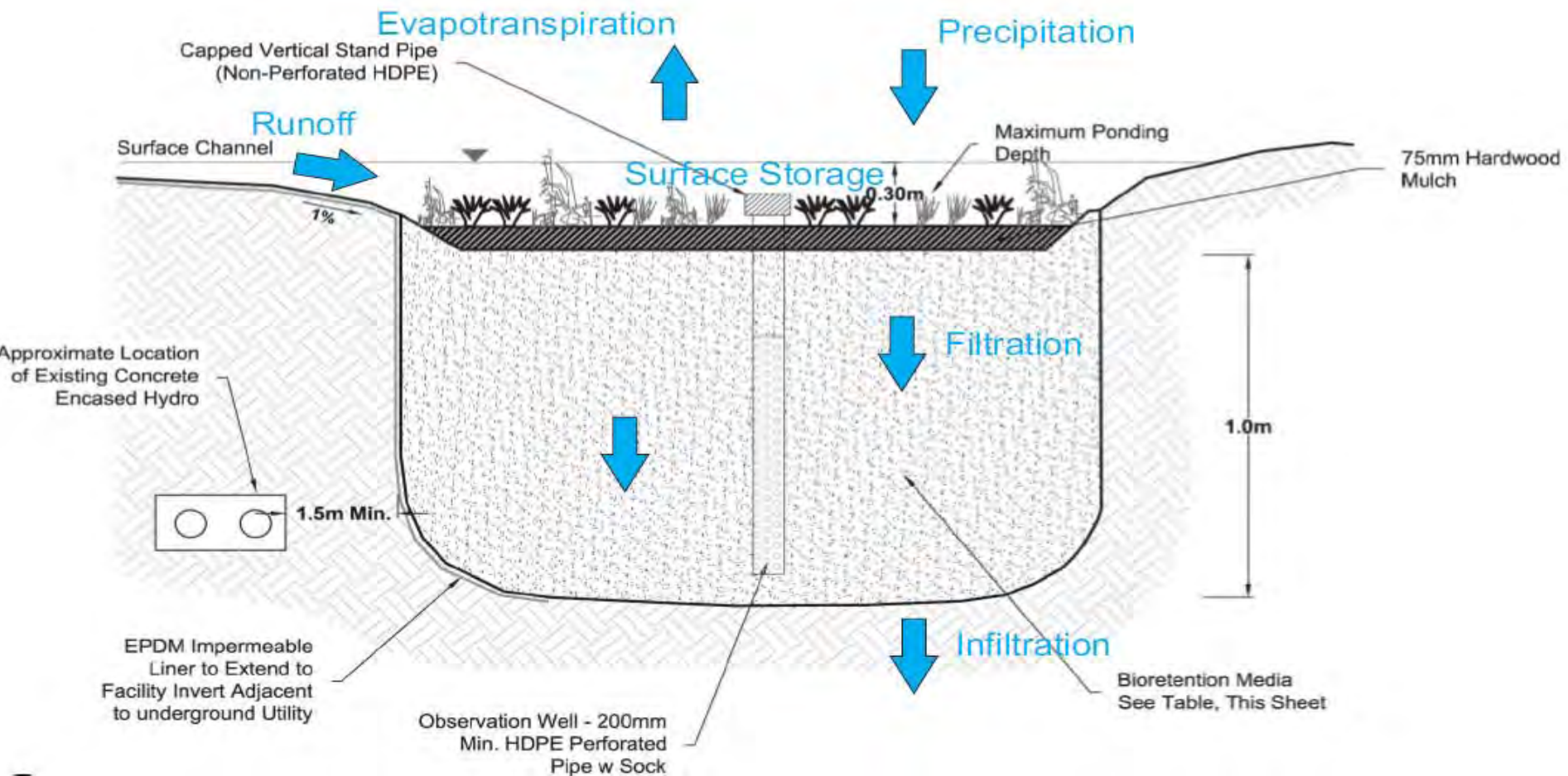
# WHAT IS A 'RAIN GARDEN' ?

- ▶ Rain gardens are planted areas designed to improve water quality and reduce runoff using a combination of soil, plants and mulch to treat and absorb stormwater runoff. This technology is also known as “bioretention.”

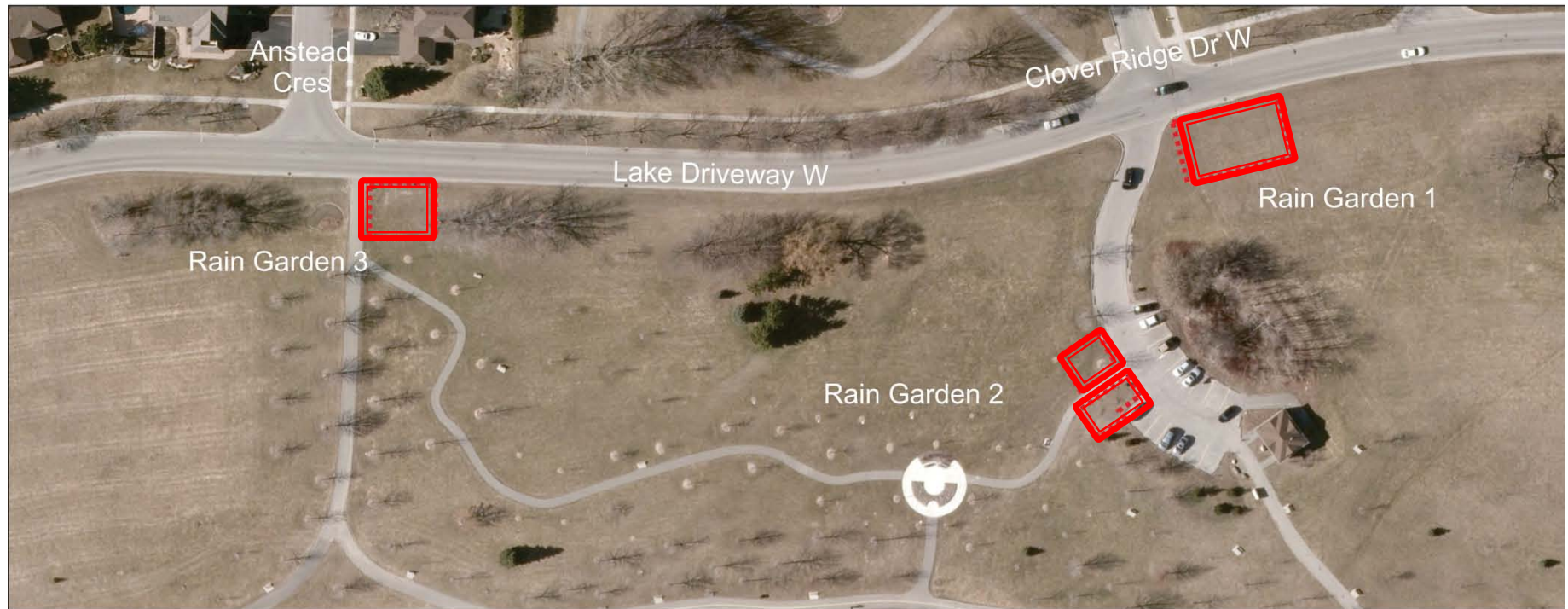




# HOW DOES A 'RAIN GARDEN' WORK?



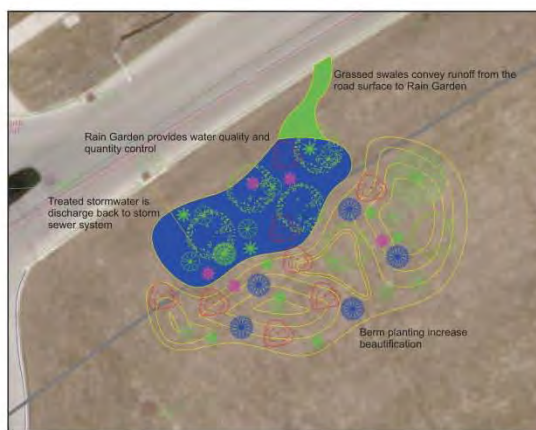
# PROPOSED RAIN GARDEN LOCATIONS



**Proposed Rain Gardens Locations Identified Along Lake Driveway**



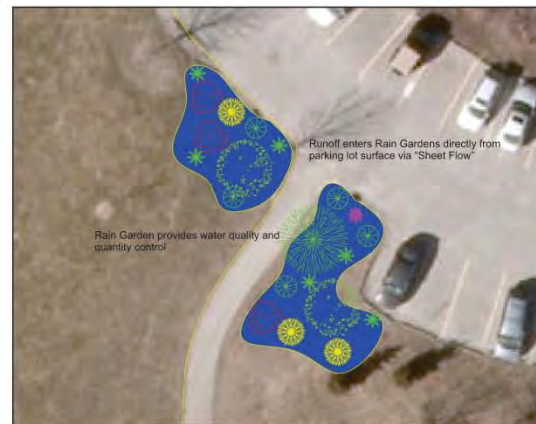
# DESIGN CONCEPTS



**Rain Garden #1 Design Concept**



**Rain Garden - Green Glades, Mississauga, ON**



**Rain Garden #2 Design Concept**



**Rain Garden - Marlowe Place, Calgary, AB**



**Rain Garden #3 Design Concept**



**Rain Garden - Portico Church, Mississauga, ON**



# LANDSCAPING CONCEPTS & PLANTINGS

No tree planting proposed for this project

"The gardens will include a mix of perennials and shrubs designed to tolerate spring flooding and summer drought.

Plants are chosen to offer year-round interest as well as benefiting pollinators and general biodiversity without sacrificing beauty. Even though most of the plants are native, the cultivars chosen are extremely showy and will blend with the Veterans Point Park and the nearby residential gardens.

Maintenance for the gardens is extremely low cost and easy involving simple waiting and easy involving simple waiting and cutting down of the previous perennial growth."



**Little Carlow Heart-leaf Aster** has nice foliage all season then is absolutely covered in blue-lavender flowers in the fall. It has interesting flowers in mid-Fall which also serves to aid pollinators when they need it most.



**Butterfly Bush** blooms all summer with baby powder scented flowers. Aclty named, butterflies love it, adding interest to the garden.



**Golden Dogwood** brightens the landscape like fire plants. Red twigs in the winter offer great colour as well. It offers great food for many butterflies, moths, bees and birds. Great for biodiversity!



**Yellow Gem Potentilla** is a unique plant in that it can stand spring flooding and summer drought while providing flowers from June to October. No maintenance is required.



**Tiger's Eye Sumac** is a great native (cultivar of a native plant), having great branch structure and fruit that make a great tree. Its gold/orange leaves provide an incredible burst of colour in the garden.



**Summer Storm Hibiscus** would never be recognized as a native plant with its dark purple leaves and GIGANTIC pink flowers with their red throats. It's late to come up in the spring to be patient.



**Siberian Iris** has great sword-shaped leaves and loads of blue flowers in the early Summer. It's bulletproof and looks great in the winter.



**Gayfeather** has magnificent spikes for a month in the early summer and interesting seed heads for the rest of the season. Cut to the ground in the spring. Like many plants in the garden, butterflies and pollinators find it irresistible.



**Japanese Candelabra Primrose** provides flowers in spring when the Hibiscus isn't up yet. Tiers of flowers like a pagoda are interesting and the pastel flowers are an unusual colour exclamation point. No maintenance is necessary.



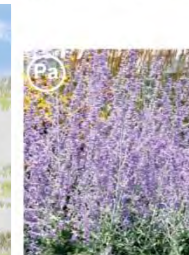
**Umbrella Plant** has large shade of pink flowers in very early Spring followed by huge leaves which turn red in August. It offers both early and late interest to the garden, and, more importantly, bold texture which is more important than flowers.



**Double-flowered Meadowsweet** is unique in the garden because its blooms are incredibly soft to the touch. It feels like touching a cloud and its ferny leaves contrast other textures in the garden.



**Yucca** is one of the best plants for the landscape since it withstands anything yet offers four seasons of interest. All parts of the plant are edible or useful and its summer flowers are stunning ivory. It's a winter anchor and summer show stopper.



**Russian Sage** flowers for months with blue-lavender flowers and silver stems. Even in winter it looks great. Butterflies and pollinators love the nectar buffet.



**Prairie Sky Switchgrass** stands upright with leaves blue as a spruce all season long. Any seedheads provide an extra dimension in late summer. In the winter, the feathery leaves look great. Many caterpillars feed on native grasses.



**Buttonbush** has one of the most unusual flowers of any native, often described as looking like Sputnik. It's a great late season bloomer with yellow fall colour.



**Blood Brothers Switchgrass** has blueish leaves up until July when it begins to turn dark red. By September, it's a deep burgundy. Any seedheads provide an extra dimension in late summer. In the winter, the feathery leaves look great. Many caterpillars feed on native grasses.



**White Swan Coreopsis** offers many weeks of pure white blooms in late summer with seeds Goldfinches crave in winter. The fragrant flowers are butterfly magnets. Like all plants in the garden, it's incredibly drought tolerant as well.



**Regaea Rosea** has four seasons of interest with flowers all season long, great yellow/orange fall colour and red hips, (which make a tea rich in vitamin C), throughout the winter.



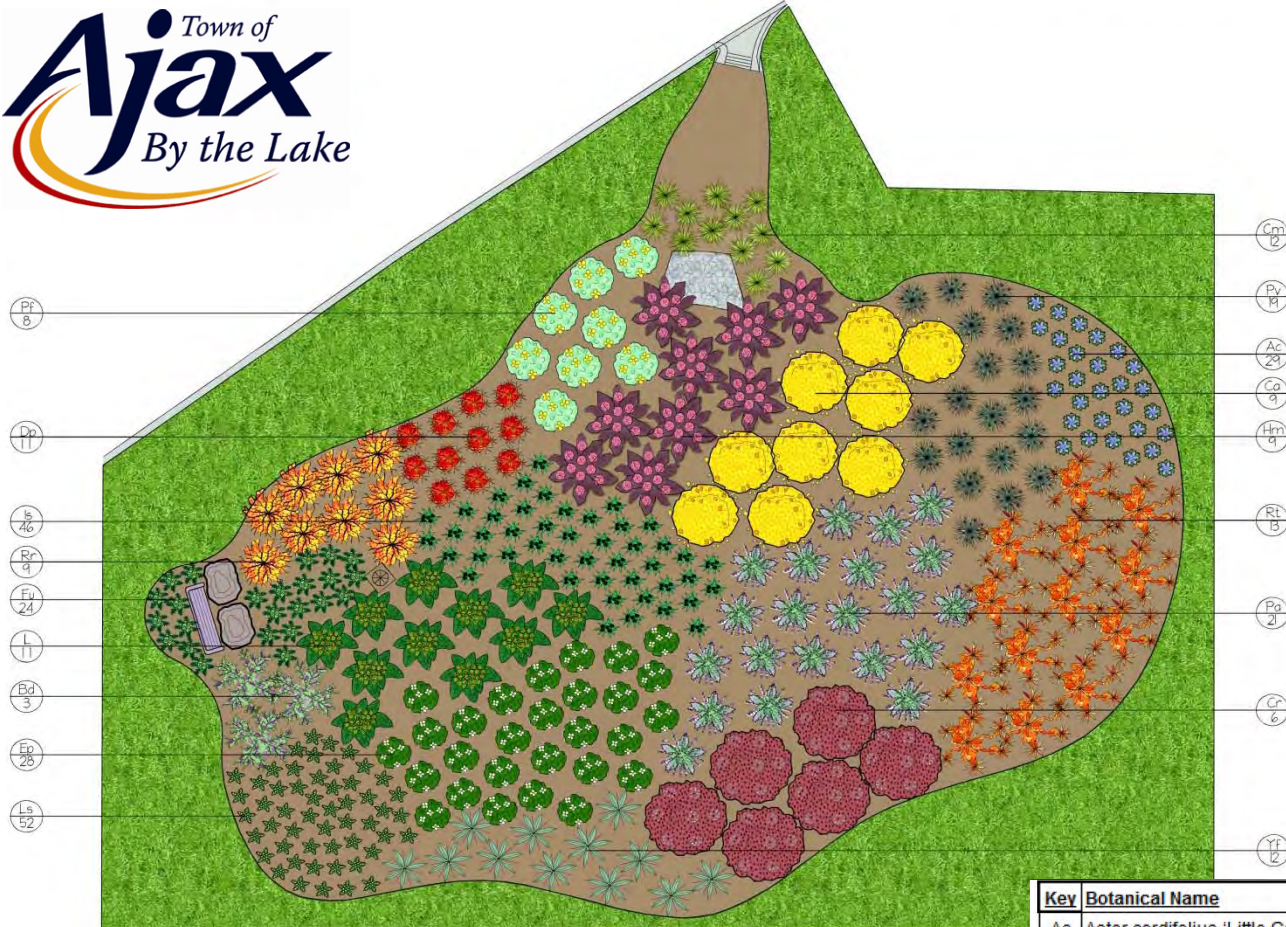
**Grey-twig Dogwood** is interesting all year long with white spring flowers, white berries, (loved by birds), burgundy fall colour and red seed-heads held deep into the winter. Few plants offer so many seasons of interest.



**Rocket Groundsel** offers great, bold texture and incredibly showy, tall yellow spikes of flower in mid-Summer.

**Fern Ridge**  
CONSULTING & ECO-SOLUTIONS  
www.fernridgelandscaping.com





# RAIN GARDEN NO. 1

Key	Botanical Name	Common Name	Size	#
Ac	Aster cordifolius 'Little Carlow'	Little Carlow Aster	1g	29
Bd	Buddleia davidii	Butterfly Bush	2g	3
Cm	Carex muskingumensis	Palm Sedge Grass	1g	12
Ca	Cornus alba 'Aurea'	Gold-leaf Dogwood	60cm	9
Cr	Cornus racemosa	Grey Dogwood	60cm	6
Dp	Darmera peltata	Umbrella Plant	1g	11
Ep	Echinacea purpurea 'White Swan'	White Purple Coneflower	1g	28
Fu	Filipendula ulmaria 'Flore Pleno'	Meadowsweet	1g	24
Hm	Hibiscus moscheutos 'Summer Storm'	Rose Mallow	1g	9
Is	Iris siberica	Siberian Iris	1g	46
Ls	Liatris spicata	Gay Feather	10cm	52
L	Ligularia stenocephala 'The Rocket'	Rocket Groundsel	1g	11
Pv	Panicum virgatum 'Prairie Sky'	Switch Grass	1g	19
Pa	Perovskia atriplicifolia	Russian Sage	1g	21
Pf	Potentilla fruticosa 'Yellow Gem'	Shrubby Cinquefoil	50cm	8
Rt	Rhus typhina 'Tiger's Eye'	Tiger's Eye Staghorn Sumac	50cm	13
Rr	Rosa rugosa	Rugosa Rose	2g	9
Yf	Yucca filimentosa	Adam's Needle	1g	12



# RAIN GARDEN NO.2



Key	Botanical Name	Common Name	Size	#
Bd	Buddleia davidii	Butterfly Bush	2g	3
Cm	Carex muskingumensis	Palm Sedge Grass	1g	29
Ca	Cephalanthus occidentalis	Buttonbush	50cm	1
Ca	Cornus alba 'Aurea'	Gold-leaf Dogwood	60cm	10
Dp	Darmera peltata	Umbrella Plant	1g	20
Fu	Filipendula ulmaria 'Flore Pleno'	Meadowsweet	1g	8
Hm	Hibiscus moscheutos 'Summer Storm'	Rose Mallow	50cm	10
Is	Iris siberica	Siberian Iris	1g	56
L	Ligularia stenocephala 'The Rocket'	Rocket Groundsel	1g	6
Pv	Panicum virgatum 'Prairie Sky'	Switch Grass	1g	18
Pf	Potentilla fruticosa 'Yellow Gem'	Shrubby Cinquefoil	2g	18
Pj	Primula japonica	Japanese Primrose	50cm	78
Rr	Rosa rugosa	Rugosa Rose	2g	10



*Fern Ridge*  
CONSULTING & ECO-SOLUTIONS  
[www.fernridgelandscaping.com](http://www.fernridgelandscaping.com)

Key	Botanical Name	Common Name	Size	#
Cm	Carex muskingumensis	Palm Sedge Grass	1g	21
Cr	Cornus racemosa	Grey Dogwood	60cm	8
Dp	Darmera peltata	Umbrella Plant	1g	7
Ep	Echinacea purpurea 'White Swan'	White Purple Coneflower	1g	17
Hm	Hibiscus moscheutos 'Summer Storm'	Rose Mallow	50cm	5
Is	Iris siberica	Siberian Iris	1g	34
L	Ligularia stenocephala 'The Rocket'	Rocket Groundsel	1g	9
P	Panicum virgatum 'Blood Brothers'	Switch Grass	1g	14
Pv	Panicum virgatum 'Prairie Sky'	Switch Grass	1g	15
Pf	Potentilla fruticosa 'Yellow Gem'	Shrubby Cinquefoil	2g	6
Pj	Primula japonica	Japanese Primrose	50cm	50
Rt	Rhus typhina 'Tiger's Eye'	Tiger's Eye Staghorn Sumac	50cm	8
Rr	Rosa rugosa	Rugosa Rose	2g	10
Yf	Yucca filimentosa	Adam's Needle	1g	17



# NEXT STEPS

- ▶ Continue working on the design (April/May completion)
- ▶ Public Meeting–March 25, 2014
- ▶ Pre–qualify landscape contractors
- ▶ Contract award June/July
- ▶ Fall construction



# Questions



# Recommendations Completed

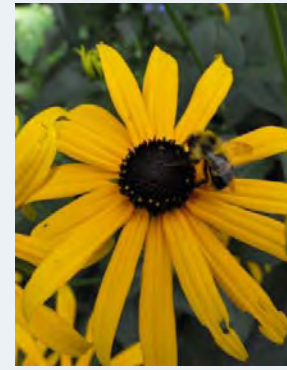
- Revised Engineering Design Criteria and Standard Drawings 2011
- Continuing Waterfowl Management
- Yellow Fish Program 2011
- Official Plan Amendment (OPA 38 Environmental Policies) 2011
- Community Brochures 2011 2013
- Revised Sewer Use Bylaw 2012
- Dedicated web pages on Town's website on stormwater outreach
- Update Salt Management Plan
- Continue implementing Low Impact Development(LID) requirements for new and re-development projects

Yellow Fish



# St Andrews Park

## Community Orchard, Pollinator Garden & Plot Expansion



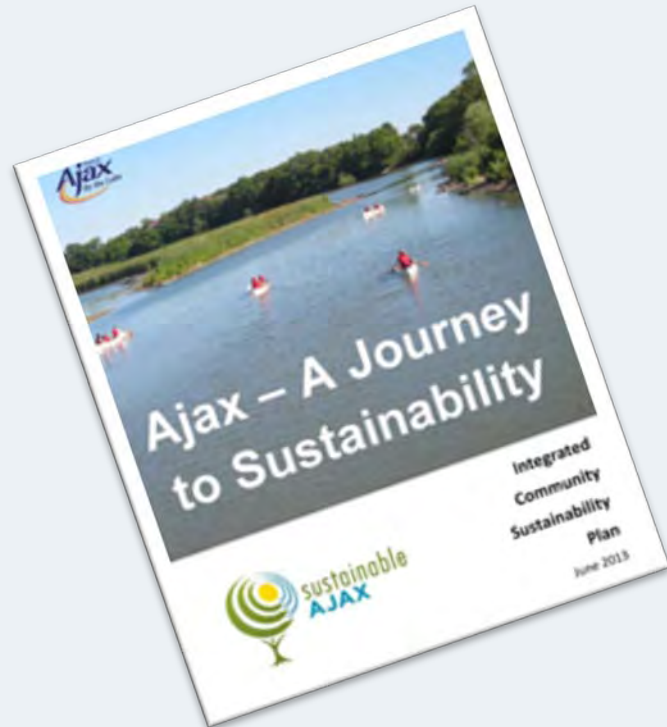
Presented by Jade Schofield, Environmental Sustainability Coordinator  
Town of Ajax



# A Journey to Sustainability

## Ajax's Integrated Community Sustainability Plan

---



A Journey to Sustainability provides direction for the community to achieve environmental, cultural/social, and economic sustainability goals. By implementing a pollinator garden, community orchard and expanding the number of community garden plots in St Andrews Park, Ajax is able to further support:

- ▶ A robust regional food system
- ▶ Good ecological health with linkages between natural features and their functions
- ▶ A community that is living a healthy and pro active lifestyle
- ▶ Strong communities, where people feel they belong, are able to contribute to overall wellbeing, and are committed to meeting their needs together.
- ▶ The Preservation of Ajax's unique history to provide continuity between the past and the present.



# St Andrews Park

St Andrews Park is located east of Exeter Road, north of Rideout Street. The park is primarily surrounded by residential homes with exception to the St Andrews Senior Centre located to the west of the park, St Paul's United Church to the north east and the Wasdell Academy for Innovative Learning to the east.

Features in the park include:

- ▶ A covered gazebo
- ▶ A wellness mound
- ▶ 400m paved trail which is maintained throughout the year
- ▶ St Andrews Community Garden.



# St Andrews Community Garden

- ▶ St. Andrew's Community Garden is a 5,000-square-foot space
- ▶ Opened for planting in the spring of 2011.
- ▶ 71 plots
- ▶ The space is managed by two volunteer coordinators and a garden committee.
- ▶ Trends have shown that the waiting list for plots is steadily increasing.



## Design Requirements

- ▶ Increased number of plots between 10 and 14
- ▶ Fencing to prevent theft and delineate garden plots from the rest of the parkland
- ▶ Seating area
- ▶ Community Garden Information Kiosk

# Community Orchard

---



A community orchard is a group of fruit bearing trees, planted and maintained by members of the community.

Implementing a community orchard in Ajax will enable:

- ▶ Greater learning opportunities around local food
- ▶ Increased community engagement
- ▶ Better nutritional awareness
- ▶ Stronger connections between the natural environment and our food supply



## Design Components

- ▶ 12 apple tree & 6 pear trees
- ▶ Fruit bearing shrubs
- ▶ Heritage apple tree



The proposed Ajax Community Orchard will rely on the garden community to volunteer their time to maintain and harvest the fruits of the trees. The Town of Ajax will be responsible for providing training to the garden volunteers as well as hosting educational events throughout the year for the entire community.



# Pollinator Garden



Toronto and Region Conservation Authority, Community Development Council Durham, Durham Sustain Ability, Native Plants in Claremont and the Town of Ajax Received \$88,000 over three years from Ontario Trillium Foundation to implement the Pollinator Meadowscape Project in Ajax.

## Pollinator garden

- ▶ A pollinator garden is home to a wide variety of pollinators like hummingbirds, butterflies, moths, bees, flies and beetles. The native plants in the garden provide the nectar, pollen, larval food and habitat that these pollinators need to survive.

## Native plants

- ▶ A native plant is one that occurs naturally in a particular region without human intervention. Native plants provide food and shelter for native insects and wildlife and are perfectly suited to our local growing conditions.

## Food connection

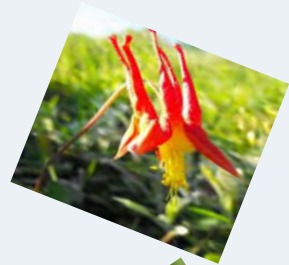
- ▶ Without pollinators we would lose foods such as apples, blueberries, strawberries, melons, peaches, sunflowers, alfalfa and pumpkins, along with many others.

## Bee condo

- ▶ The bee condo is a way for us to provide much needed nesting spots to increase pollinator populations. Solitary bees and wasps use the holes in this structure to make her nests.

## Bee safety

- ▶ Solitary bees don't live in colonies. Each bee lives her life independently. Because they don't have a hive or queen to protect, solitary bees aren't defensive and are very unlikely to sting. A lot of them don't even have a stinger.



# Stakeholder Engagement

## ► Initial Meeting

Town staff and the TRCA brought forward the project proposals to the St Andrews Community Garden Committee.

## ► Design Charette

A design charette held with Serdika consulting Inc with the St Andrews Community Garden Committee to determine specific design criteria.

## ► Design Concept Review

Town Staff, the Community Garden Committee, and the Environmental Advisory Committee were provided the opportunity to review the designs based on best operating practices and aesthetics

## ► Public Open House

The Public Open House included a talk on pollinators and native plants, hands on pollinator crafts and showcased the St Andrews Park designs. The event was attended by over 90 residents.







# Project Funding

- ▶ **Community Orchard-** Tree material for the planting of the orchard will cost approximately \$1500 and had been reserved within Sustainable Forestry Cover fund. A grant application under Tree Canada's Edible Trees has been submitted by the Town to support these plant purchases, future workshops and interpretative signage.
- ▶ **Plot Expansion-** The plot expansion can be completed by Operations staff.
- ▶ **Pollinator garden-** Toronto and Region Conservation and the pollinator meadowscapes partners have developed a three year plan to implement the Pollinator Meadowscapes Project in Ajax from the Ontario Trillium Foundation.



# Proposed Timeline

