



# **The Corporation of the County of Wellington**

## **Police Services Board**

### **Agenda**

April 9, 2014

9:00 am

County Administration Centre

Guthrie Room

Members: Warden Chris White; Councillor Ray Tout, Russ Spicer (Chair), Kent Smith, Jeremy Vink

---

Pages

1. **Call to Order**
2. **Declaration of Pecuniary Interest**
3. **Minutes for Approval** 2 - 5  
March 12, 2014
4. **Financial Statements as of March 2014** 6 - 7
5. **2013 Reconciled O.P.P. Contract Policing Costs** 8 - 16
6. **Detachment Commander's Report** 17 - 32
7. **March 2014 Parking Ticket Report** 33 - 33
8. **False Alarm Revenue Report - April 2014** 34 - 34
9. **OAPSB 2014 Spring Conference Sponsorship** 35 - 36
10. **Closed Meeting**  
(Agenda emailed under separate cover)
11. **Rise and Report**
12. **Adjournment**  
Next meeting date May 14, 2014 or at the call of the Chair.



## **Corporation of the County of Wellington Police Services Board Minutes**

March 12, 2014  
County Administration Centre  
Guthrie Room

**Present:** Warden Chris White  
Councillor Raymond Tout  
Russ Spicer (Chair)  
Jeremy Vink

**Regrets:** Kent Smith

**Staff:** Donna Bryce, County Clerk  
Ken DeHart, County Treasurer  
Kelly-Ann Wingate, Parking Licence and Alarm Coordinator  
Scott Wilson, Board Secretary

**Also Present:** Inspector Scott Lawson, Detachment Commander  
Staff Sergeant Krista Miller

---

### **1. Call to Order**

At 9:07 am, the Chair called the meeting to order.

### **2. Declaration of Pecuniary Interest**

There were no declarations of pecuniary interest.

**3. Minutes for Approval**

1/3/14

**Moved by:** Warden White

**Seconded by:** Councillor Tout

That the minutes of the February 12, 2014 meeting of the Wellington County Police Services Board be adopted.

**Carried**

**4. Financial Statements as of February 28, 2014**

2/3/14

**Moved by:** Jeremy Vink

**Seconded by:** Councillor Tout

That the Financial Statements as of February 28, 2014 be approved.

**Carried**

**5. Detachment Commander's Report**

3/3/14

**Moved by:** Warden White

**Seconded by:** Jeremy Vink

That the Detachment Commander's Report for March 2014 be received for information.

**Carried**

**6. February 2014 Parking Ticket Report**

4/3/14

**Moved by:** Jeremy Vink

**Seconded by:** Councillor Tout

That the February 2014 Parking Ticket Report be received for information.

**Carried**

**7. March False Alarm Revenue Report**

5/3/14

**Moved by:** Warden White

**Seconded by:** Councillor Tout

That the March 2014 False Alarm Revenue Report be received for information.

**Carried**

**8. Closed Meeting**

6/3/14

**Moved by:** Jeremy Vink

**Seconded by:** Warden White

That the Police Services Board move into a closed meeting for the purpose of considering intimate financial or personal matters or other matters that may be disclosed of such a nature, having regard to the circumstances, that the desirability of avoiding their disclosure in the interest of any person affected or in the public interest outweighs the desirability of adhering to the principle that proceedings be open to the public.

**Carried**

**9. Rise and Report**

7/3/14

**Moved by:** Jeremy Vink

**Seconded by:** Councillor Tout

That the Wellington County Police Services Board rise and report from the closed meeting.

**Carried**

**10. Adjournment**

At 9:48 am, the Chair adjourned the meeting until April 9, 2014 or at the call of the Chair.

---

Russ Spicer  
Chair  
Police Services Board



**County of Wellington**  
**Police Services**  
Statement of Operations as of  
31 Mar 2014

	<b>Annual Budget</b>	<b>March Actual \$</b>	<b>YTD Actual \$</b>	<b>YTD Actual %</b>	<b>Remaining Budget</b>
<b>Revenue</b>					
Grants and Subsidies	\$267,600	\$0	\$(41,762)	(16%)	\$309,362
Licenses, Permits and Rents	\$153,600	\$13,565	\$40,515	26%	\$113,085
Fines and Penalties	\$75,000	\$10,338	\$17,105	23%	\$57,895
User Fees & Charges	\$79,000	\$5,921	\$14,569	18%	\$64,431
Other Revenue	\$1,000	\$11	\$17	2%	\$983
<b>Total Revenue</b>	<b>\$576,200</b>	<b>\$29,835</b>	<b>\$30,444</b>	<b>5%</b>	<b>\$545,756</b>
<b>Expenditures</b>					
Salaries, Wages and Benefits	\$137,400	\$11,266	\$33,853	25%	\$103,547
Supplies, Material & Equipment	\$40,500	\$5,262	\$10,895	27%	\$29,605
Purchased Services	\$359,800	\$48,193	\$104,637	29%	\$255,163
Transfer Payments	\$17,796,000	\$1,520,466	\$4,681,995	26%	\$13,114,005
Insurance & Financial	\$10,200	\$0	\$5,581	55%	\$4,619
Minor Capital Expenses	\$4,000	\$0	\$0	0%	\$4,000
Debt Charges	\$594,500	\$78,610	\$55,507	9%	\$538,993
Internal Charges	\$1,500	\$137	\$441	29%	\$1,059
<b>Total Expenditures</b>	<b>\$18,943,900</b>	<b>\$1,663,934</b>	<b>\$4,892,909</b>	<b>26%</b>	<b>\$14,050,991</b>
<b>NET OPERATING COST / (REVENUE)</b>	<b>\$18,367,700</b>	<b>\$1,634,099</b>	<b>\$4,862,466</b>	<b>26%</b>	<b>\$13,505,234</b>
<b>Transfers</b>					
Transfers from Reserves	\$(93,000)	\$0	\$0	0%	\$(93,000)
Transfer to Capital	\$52,000	\$0	\$52,000	100%	\$0
Transfer to Reserves	\$90,000	\$0	\$90,000	100%	\$0
<b>Total Transfers</b>	<b>\$49,000</b>	<b>\$0</b>	<b>\$142,000</b>	<b>290%</b>	<b>\$(93,000)</b>
<b>NET COST (REVENUE)</b>	<b>\$18,416,700</b>	<b>\$1,634,099</b>	<b>\$5,004,466</b>	<b>27%</b>	<b>\$13,412,234</b>



## County of Wellington

### Police Services

#### Capital Work-in-Progress Expenditures by Department

All Open Projects For The Period Ending March 31, 2014

	Approved Budget	March Actual	LIFE-TO-DATE ACTUALS			% of Budget	Remaining Budget
			Current Year	Previous Years	Total		
NW OPP Operations Centre	\$7,500,000	\$154,901	\$556,288	\$6,327,781	\$6,884,069	92%	\$615,931
CW OPP Ramp Heating System	\$80,000	\$0	\$0	\$2,230	\$2,230	3%	\$77,770
New Officers Equipment 2014	\$12,000	\$0	\$0	\$0	\$0	0%	\$12,000
<b>Total Capital</b>	<b>\$7,592,000</b>	<b>\$154,901</b>	<b>\$556,288</b>	<b>\$6,330,010</b>	<b>\$6,886,299</b>	<b>91%</b>	<b>705,701</b>



# COUNTY OF WELLINGTON

## COMMITTEE REPORT

**To:** Chair and Members of the Police Services Board  
**From:** Ken DeHart, County Treasurer  
**Date:** Tuesday, April 8, 2014  
**Subject:** 2013 Reconciled O.P.P. Contract Policing Costs

### Background:

The 2013 year-end financial statement from the Ontario Provincial Police for Wellington County has been submitted and is attached to this report. The County has 90 days to either approve or request a review of the financial statement. Also attached is an analysis of the statement with a comparison to budgeted figures.

Total contract costs in 2013 were \$16,087,085 which was \$972,489 less than the province's estimate and \$522,915 less than the County's 2013 budget estimate. A comparison of the 2013 County budget and actual policing costs is shown below:

Description	Estimate of policing costs	Actual reconciled costs	Variance
County Policing Budget	\$16,610,000	\$16,087,085	(\$522,915)

The savings can entirely be attributed to compensation - salaries and benefits were under spent by \$1,036,313 due to staff vacancies and the fact that the contract estimate is based on the assumption that all officers are paid at the first class constable rate. The 2013 Provincial Services Usage (PSU) credit for the County was 2.50%. The total credit to the contract was \$412,489 which is \$76,532 less than the budgeted credit. The following table summarizes the historical PSU credit for Wellington County:

County of Wellington Provincial Services Usage Credit Summary		
Year	PSU credit	
	%	\$
2001	7.74%	598,092
2002	4.18%	376,807
2003	7.85%	744,518
2004	9.45%	931,824
2005	7.34%	765,029
2006	14.86%	1,623,121
2007	7.65%	886,114
2008	2.97%	355,067
2009	5.07%	714,396
2010	6.94%	1,040,417
2011	4.71%	742,783
2012	2.86%	473,063
2013	2.50%	412,489
Figures include credit for canine unit		



The 2013 reconciled costs of \$16,087,085 results in a favourable variance of \$522,915 when measured against the County's 2013 budget for the contract. Overall, the net cost of policing in 2013 was \$503,690 under budget (see attached County financial statement).

**Recommendation:**

That the 2013 Reconciled O.P.P. Contract Policing costs be approved; and

That the 2013 final operating and capital statements for Police Services be approved.

Respectfully submitted,

A handwritten signature in black ink, appearing to read 'Ken DeHart', with a long horizontal flourish extending to the right.

Ken DeHart, CGA  
County Treasurer

**O.P.P. COSTING SUMMARY -**  
**Actual Policing Costs for the period**  
**January 1, 2013 to December 31, 2013**  
**(See Attached Notes)**

**WELLINGTON COUNTY**

365 Days in period  
365 Days in Year

**Salaries and Benefits**

<b><u>Uniform Members</u></b>	<b>(Note 1)</b>	<b><u>Positions</u></b>	<b><u>\$</u></b>	
Inspector .....		0.82	109,456	
Staff Sergeant-Detachment Commander. ....		-	-	
Staff Sergeant .....		1.82	205,539	
Sergeant .....		12.56	1,267,025	
Constables. ....	<b>(Note 1)</b>	94.39	7,693,922	
Part-Time Constables. ....	<b>(Note 2)</b>	2.00	133,580	
Total Uniform Salaries	<b>(Note 2)</b>			9,409,522
Overtime (Actual) .....	<b>(Note 2)</b>			236,216
Contractual Payout (Vacation & Statutory Holidays) . . . .	<b>(Note 3)</b>			355,339
Shift Premiums .....	<b>(Note 4)</b>			73,869
Benefits (24.90% of Salaries; 2% of Overtime, Part-time 19.6%) .....	<b>(Note 5)</b>			2,340,616
Total Uniform Salaries & Benefits				12,415,562
<b><u>Civilian Members</u></b>	<b>(Note 1)</b>	<b><u>Positions</u></b>	<b><u>\$</u></b>	
Court Officer .....		2.00	114,510	
Detachment Administrative Clerk .....		9.74	539,976	
Detachment Operations Clerk .....		1.00	53,150	
RMS Data Entry Clerk C0048 .....	<b>Part-Time (Note 1)</b>	0.49	23,804	
RMS Data Entry Clerk C0048 .....	<b>Full-time (Note 1)</b>	0.74	35,707	
Communication Operators .....	<b>(Note 6)</b>		582,509	
Prisoner Guards / Expenses .....	<b>(Note 7)</b>		154,108	
Office Automation Support Salaries & Benefits. ....	<b>(Note 8)</b>		39,503	
Telephone Support Salaries & Benefits. ....	<b>(Note 9)</b>		13,391	
Operational Support Salaries & Benefits. ....	<b>(Note 10)</b>		435,989	
Total Civilian Salaries				1,992,648
Benefits (25.3% of Salaries; 19.7% Part-Time) .....	<b>(Note 5)</b>			192,755
Total Civilian Salaries & Benefits				2,185,403
OSS Pay and Benefit Charge .....	<b>(Note 11)</b>			-

**Total Salaries & Benefits 14,600,965**

**Other Direct Operating Expenses**

	<b>(Note 12)</b>	
Communication Centre .....	<b>(12 a)</b>	28,791
Operational Support .....	<b>(12 b)</b>	93,402
RHQ Municipal Support .....	<b>(12 c)</b>	218,162
Vehicle Usage .....	<b>(12 d)</b>	921,525
Administrative Vehicle .....	<b>(12 e)</b>	9,788
Canine Vehicle .....	<b>(12 f)</b>	23,169
Telephone .....	<b>(12 g)</b>	137,035
Office Supplies & Equipment .....	<b>(12 h)</b>	49,993
Accommodation .....	<b>(12 i)</b>	10,222
Uniform & Equipment .....	<b>(12 j)</b>	127,753
Uniform & Equipment - Court Officer .....	<b>(12 j)</b>	1,912
Cleaning Contract .....	<b>(12 i)</b>	3,876
Mobile Radio Equipment Repairs & Maintenance .....	<b>(12 k)</b>	88,043
Mobile Radio Equipment Maintenance -Court Officer . . .	<b>(12 k)</b>	1,572
Office Automation - Uniform .....	<b>(12 l)</b>	148,915
Office Automation - Civilian .....	<b>(12 m)</b>	27,174
Quarterly Reconciliations Administration .....	<b>(12 n)</b>	778
Additional Canine Training .....	<b>(12 o)</b>	3,000
Kennel Maintenance .....	<b>(12 p)</b>	500
Canine Maintenance .....	<b>(12 q)</b>	3,000
Total Other Direct Operating Expenses		1,898,610
OSS ODOE Fee .....	<b>(12 u)</b>	-
2013 Total Actual Gross Policing Cost. ....		16,499,575
Provincial Services Usage .....	<b>(Note 13)</b>	(412,489)

<b>TOTAL ACTUAL ANNUAL 2013 POLICING COSTS</b>	<b>\$</b>	<b>16,087,085</b>
<b>Less TOTAL AMOUNT BILLED PER ESTIMATE</b>	<b>\$</b>	<b>16,841,061</b>
<b>DIFFERENCE</b>	<b>\$</b>	<b>(753,976)</b>
<b>FIRST QUARTER RECONCILIATION CREDIT</b>	<b>\$</b>	<b>287,452</b>
<b>SEMI-ANNUAL RECONCILIATION CREDIT (if applicable)</b>	<b>\$</b>	<b>193,682</b>
<b>THIRD QUARTER RECONCILIATION CREDIT</b>	<b>\$</b>	<b>152,245</b>
<b>FINAL YEAR END RECONCILIATION AMOUNT</b>	<b>(Note 14)</b>	<b>\$ (120,597)</b>

**NOTES TO STATEMENT**

- 1) Uniformed salaries used for the reconciliation to actual costs are the January 1, 2013 salaries negotiated with the Ontario Provincial Police Association (OPPA). Civilian salaries are the salaries negotiated with the OPPA effective January 1, 2013. Effective dates of the one (1) Constable effective start date April 1, 2013, pro-rated April 1, 2013 to December 31, 2013 (275/365 days), and one (1) Constable effective start date May 13, 2013, pro-rated May 13, 2013 to December 31, 2013 (233/365 days). The Civilian Data Entry (CDE) program is currently undergoing restructuring and as such municipalities are not responsible for the program costs effective April 1, 2013. The cost of the existing contract FTEs performing CDE functions (3.00 Full Time RMS Data Entry Clerk FTEs and 2.00 Part -time RMS Data Entry Clerk FTEs) were removed for the period April 1 to December 31, 2013 (275/365 days), applicable office automation costs have also been adjusted accordingly.
- 2) Salary and overtime reconciliation by rank and classification are detailed on the attached Schedule "A". Salaries, benefits and other direct operating expenses have been calculated based on Full Time Equivalent Uniformed positions 111.59. Part-Time Constables are included in the shift premium calculations and in the overtime calculation. They are not entitled to the contractual payouts. They are entitled to certain benefits which are calculated at 19.6% of their salaries. Their positions are also taken into consideration for the calculation of other direct operating expenses.
- 3) Contractual Payouts are calculated using actual costs.
- 4) Shift Premium is calculated at \$678 per Sergeant and Constable.
- 5) The benefit rates are 24.90% of salaries for uniformed officers, 25.3% for civilian staff, 19.6% for Uniform part-time staff, 19.7% for Civilian part-time staff and 2% for overtime payments.
- 6) Communication Operator costs are calculated at \$5,220 per uniformed member.
- 7) Prisoner Guards / Expenses are calculated at \$1,381 per uniformed member.
- 8) Office Automation Support Salaries & Benefits are calculated at \$354 per uniformed member.
- 9) Telephone Support & Benefits are calculated at \$120 per uniformed member
- 10) Operational Support & Benefits are calculated at \$3,907 per uniformed member.
- 11) Ontario Shared Services (OSS) Payroll and Benefit charge eliminated effective January 1, 2012.
- 12) Other Direct Operating Expense items are calculated as summarized below.
  - a) Communication Centre is calculated at \$258 per uniform member.
  - b) Operational Support is calculated at \$837 per uniformed member.
  - c) RHQ Municipal Support is calculated at \$1,955 per uniformed member.
  - d) Vehicle Usage is calculated at \$8,258 per uniformed member.
  - e) Administrative Vehicle Usage calculated at an annualized cost calculated at \$9,788.
  - f) Canine Vehicle Usage calculated at an annualized cost of \$23,169.
  - g) Telephone cost is calculated at \$1,228 per uniformed member.
  - h) Office Supplies & Equipment are calculated at \$448 per uniformed member.
  - i) These cost are charged for 19 uniform members working in the Mount Forest building location only as the balance of the officers are located in buildings owned and maintained by the municipality. Accommodation is calculated at \$538 per uniformed member and the cleaning contract is calculated at \$204 per uniformed member. Confirmed by Detachment Commander Inspector Scott Lawson, 14 May 13.
  - j) Uniform & Equipment is calculated at \$1,167 per uniform officer. The uniform and equipment charge is not calculated for the one (1) Constable with an effective start date of April 1, 2013 and one (1) Constable with an effective start date of May 13, 2013. One Constable with an effective start date of April 16, 2012 charged for the period April 16, 2013 to December 31, 2013 (260/365 days) and one (1) Constable with an effective start date of June 11, 2012 charged for the period June 11, 2013 to December 31, 2013 (204/365 days). In future years, the uniform and equipment maintenance expense will be charged for all uniform members. Uniform and equipment costs are for the two (2) Court Officers \$1,028.
  - k) Mobile Radio Equipment Repair and Maintenance is calculated at \$786 per uniform officer and court officer. An additional cost of \$332 is charged for the Canine Constable.
  - l) Office Automation is calculated at \$1,316 per uniformed member and includes one (1) additional laptop computer for a Sergeant at a cost of \$2,060 annually.
- m) Office Automation - Civilian is calculated at \$1,648 per member based on 9.74 Detachment Administrative Clerk FTEs. The cost also includes an additional nine (9) additional desktops at an annualized cost of \$1,351 each.
- n) Annual Cost for the quarterly reconciliations charge based on the 2013 salary rate for the Financial Analyst (F03). This charge is not applicable to the semi-annual reconciliation only first and third-quarter reconciliations.
- o) Canine Training is calculated at \$3,000 annually.
- p) Kennel Maintenance is calculated at \$500 annually.
- q) Dog Maintenance is calculated at \$3,000 annually.
- u) OSS Financial Services Fee 1.15% of Total Other Direct Operating Expenses eliminated effective January 1, 2012.

- 13) A Provincial Services Usage (PSU) reduction of 2.5% of the actual policing cost is given to the municipality. This PSU compensates the municipality for the deployment of officers to other areas in response to investigations or other occurrences deemed to be provincial responsibilities.
- 14) The difference will appear on a separate **credit note** which will be forwarded to your municipality by Ontario Shared Services Bureau.

**O.P.P. COSTING SUMMARY - WELLINGTON COUNTY**

Actual Policing Costs for the period  
January 1, 2013 to December 31, 2013

365 Days in Period  
365 Days in Year

**Reconciliation of Salaries**

<b>Rank</b>	<b>Contract Positions</b>	<b>2013 Annual Salary</b>	<b>Regular # of Hours Provided</b> (Note 1)	<b>Overtime Hours Provided</b> (Note 2)	<b>FTE Positions by Rank</b> (Note 3)	<b>Actual Salary Dollars</b> (Note 3)	<b>Actual Overtime Dollars</b> (Note 2)
Inspector	0.82						
Inspector		133,483	1,641	-	0.82	109,456	-
Total - Inspector			1,641	-	0.82	109,456	-
Staff Sergeants	1.82						
Staff Sergeant 1- 23+		114,373	1,508	69.00	0.91	103,976	3,781
Staff Sergeant 1- 17-23		111,868	1,415	83.25	0.85	95,427	4,462
Staff Sergeant 1- 8-17		109,364	-	-	-	-	-
Staff Sergeant 1- 0-8		106,859	-	-	-	-	-
Staff Sergeant 2- 23+		111,030	-	-	-	-	-
Staff Sergeant 2- 17-23		108,525	-	-	-	-	-
Staff Sergeant 2- 8-17		106,021	-	-	-	-	-
Staff Sergeant 2- 0-8		103,516	-	-	-	-	-
Staff Sergeant 3- 23+		106,027	96	17.25	0.06	6,136	876
Staff Sergeant 3- 17-23		103,522	-	-	-	-	-
Staff Sergeant 3- 8-17		101,018	-	-	-	-	-
Staff Sergeant 3- 0-8		98,513	-	-	-	-	-
Total - Staff Sergeant			3,019	169.50	1.82	205,539	9,120
Sergeants	12.56						
Sergeant 1- 23+		101,850	15,421	451.00	8.83	899,364	22,008
Sergeant 1- 17-23		99,345	4,858	178.00	2.78	276,325	8,473
Sergeant 1- 8-17		96,841	1,527	32.25	0.87	84,676	1,496
Sergeant 1- 0-8		94,336	-	-	-	-	-
Sergeant 2- 23+		95,171	-	-	-	-	-
Sergeant 2- 17-23		92,666	-	-	-	-	-
Sergeant 2- 8-17		90,162	129	-	0.07	6,660	-
Sergeant 2- 0-8		87,657	-	-	-	-	-
Total - Sergeants			21,935	661.25	12.56	1,267,025	31,977
Constables:	94.39						
1st Class 1- 23+		90,997	23,762	412.50	15.61	1,420,378	17,985
1st Class 1- 17-23		88,492	9,199	602.50	6.04	534,761	25,545
1st Class 1- 8-17		85,988	46,794	1,728.25	30.74	2,643,193	71,202
1st Class 3- -8		83,483	30,178	1,111.25	19.82	1,654,962	44,449
2nd Class		74,304	9,344	371.00	6.14	456,100	13,208
3rd Class		66,790	8,619	299.25	5.66	378,167	9,576
4th Class		58,437	15,796	467.25	10.38	606,361	13,082
Part-Time Constables	2.00	66,790	3,184	2.25	2.00	133,580	72
Total - Constables			146,875	4,994.25	96.39	7,827,502	195,119
<b>Total - All Ranks</b>			<b>173,469</b>	<b>5,825.00</b>	<b>111.59</b>	<b>9,409,522</b>	<b>236,216</b>
Total Hours Worked in Contract				173,469			
Minimum Hours Required in Contract				163,705			
Hours Provided to Municipality Above Required Minimum				9,764			

**Notes:**

- 1) The number of hours provided includes regular hours only and does not include overtime hours.
- 2) The overtime hours are accumulated by rank and classification and are charged at the appropriate hourly rate.
- 3) The full time equivalent (FTE) number of officers (Inspector / Staff Sergeant Detachment Commander, Staff Sergeant, Sergeant and Constables) were obtained by dividing the number of regular officer hours provided in each classification by the total number of regular officer hours. That percentage is multiplied by the number of positions in the contract. Actual salary dollars are then obtained by multiplying the FTE number by the annual salary for each classification. Salaries were then prorated for the period January 1 to June 30, 2013 (181/365 days). Overtime is the actual overtime for the period and is not prorated.

**COUNTY OF WELLINGTON**  
**2013 O.P.P. CONTRACT COSTING ANALYSIS**

	<b>Original 2013 OPP Estimate</b>	<b>2013 Final actuals</b>	<b>2013 Variance</b>	<b>% of budget</b>
<b>Salaries and benefits</b>				
Uniform Salaries	9,961,125	9,409,522	551,603	94.5%
Overtime	332,677	236,216	96,461	71.0%
Vacation and Statutory holidays	373,447	355,339	18,108	95.2%
Shift and Badge Premiums	74,282	73,869	413	99.4%
Uniform Benefits	2,479,894	2,340,616	139,278	94.4%
<b>Total Uniform Salaries and Benefits</b>	<b>13,221,425</b>	<b>12,415,562</b>	<b>805,863</b>	<b>93.9%</b>
Office Automation Support Salaries & Benefits	39,719	39,503	216	99.5%
Telephone Support Salaries & Benefits	13,464	13,391	73	99.5%
Operational Support Salaries & Benefits	438,365	435,989	2,376	99.5%
<b>New Support Salaries and Benefits Total</b>	<b>491,548</b>	<b>488,884</b>	<b>2,664</b>	<b>99.5%</b>
Civilian salaries	948,986	767,147	181,839	80.8%
Civilian benefits	234,687	192,755	41,932	82.1%
Communication Operators	585,684	582,509	3,175	99.5%
Prisoner Guards	154,948	154,108	840	99.5%
<b>Total Civilian Salaries and Benefits</b>	<b>1,924,305</b>	<b>1,696,519</b>	<b>227,786</b>	<b>88.2%</b>
<b>Subtotal</b>	<b>15,637,278</b>	<b>14,600,965</b>	<b>1,036,313</b>	<b>93.4%</b>
<b><u>Other Direct Operating expenses</u></b>				
Communication Centre	28,948	28,791	157	99.5%
Operational Support	93,911	93,402	509	99.5%
RHQ municipal Support	219,351	218,162	1,189	99.5%
Vehicle Usage	959,505	954,482	5,023	99.5%
Telephone	137,782	137,035	747	99.5%
Office Supplies	50,266	49,993	273	99.5%
Accommodation	10,222	10,222	0	100.0%
Uniform and Equipment	130,515	129,665	850	99.3%
Cleaning Contract & Janitorial Supplies	3,876	3,876	0	100.0%
Mobile Radio Equip Repairs and Maint.	90,093	89,615	478	99.5%
Office Automation	179,574	176,089	3,485	98.1%
Quarterly reconciliations admin	775	778	(3)	100.4%
Additional Canine Training	3,000	3,000	0	100.0%
Kennel Maintenance	500	500	0	100.0%
Dog Maintenance	3,000	3,000	0	100.0%
<b>Subtotal</b>	<b>1,911,318</b>	<b>1,898,610</b>	<b>12,708</b>	<b>99.3%</b>
OSS Financial Services Fee	0			
<b>Total costs</b>	<b>17,548,596</b>	<b>16,499,575</b>	<b>1,049,021</b>	<b>94.0%</b>
less: Provincial Services Usage	(489,021)	(412,489)	(76,532)	84.4%
<b>Total contract costs</b>	<b>17,059,574</b>	<b>16,087,085</b>	<b>972,489</b>	<b>94.3%</b>
PSU as a % of costs	2.79%	2.50%		
<b><u>Staff Complement</u></b>				
Uniform Members	112.20			
Civilian Members	17.74			
<b>Total staff complement</b>	<b>129.94</b>			



**County of Wellington**  
**Police Services**  
Statement of Operations as of  
31 Dec 2013

	<b>Annual Budget</b>	<b>December Actual \$</b>	<b>YTD Actual \$</b>	<b>YTD Actual %</b>	<b>Remaining Budget</b>
<b>Revenue</b>					
Grants and Subsidies	\$267,600	\$150,499	\$287,890	108%	\$(20,290)
Licenses, Permits and Rents	\$153,600	\$13,400	\$164,955	107%	\$(11,355)
Fines and Penalties	\$75,000	\$9,046	\$83,350	111%	\$(8,350)
User Fees & Charges	\$79,000	\$5,897	\$76,156	96%	\$2,844
Other Revenue	\$1,000	\$0	\$2,660	266%	\$(1,660)
<b>Total Revenue</b>	<b>\$576,200</b>	<b>\$178,841</b>	<b>\$615,011</b>	<b>107%</b>	<b>\$(38,811)</b>
<b>Expenditures</b>					
Salaries, Wages and Benefits	\$133,300	\$11,517	\$134,338	101%	\$(1,038)
Supplies, Material & Equipment	\$56,400	\$8,525	\$62,504	111%	\$(6,104)
Purchased Services	\$282,500	\$64,011	\$325,252	115%	\$(42,752)
Transfer Payments	\$16,610,000	\$2,521,862	\$16,108,735	97%	\$501,265
Insurance & Financial	\$7,300	\$0	\$5,571	76%	\$1,729
Minor Capital Expenses	\$0	\$0	\$5,693	0%	\$(5,693)
Debt Charges	\$475,200	\$37,680	\$465,538	98%	\$9,662
Internal Charges	\$1,900	\$64	\$1,063	56%	\$837
<b>Total Expenditures</b>	<b>\$17,566,600</b>	<b>\$2,643,658</b>	<b>\$17,108,696</b>	<b>97%</b>	<b>\$457,904</b>
<b>NET OPERATING COST / (REVENUE)</b>	<b>\$16,990,400</b>	<b>\$2,464,817</b>	<b>\$16,493,684</b>	<b>97%</b>	<b>\$496,716</b>
<b>Transfers</b>					
Transfers from Reserves	\$(81,500)	\$(88,475)	\$(88,475)	109%	\$6,975
Transfer to Capital	\$1,228,000	\$0	\$1,228,000	100%	\$0
Transfer to Reserves	\$730,000	\$0	\$730,000	100%	\$0
<b>Total Transfers</b>	<b>\$1,876,500</b>	<b>\$(88,475)</b>	<b>\$1,869,525</b>	<b>100%</b>	<b>\$6,975</b>
<b>NET COST (REVENUE)</b>	<b>\$18,866,900</b>	<b>\$2,376,343</b>	<b>\$18,363,210</b>	<b>97%</b>	<b>\$503,690</b>



## County of Wellington

### Police Services

#### Capital Work-in-Progress Expenditures by Department

All Open Projects For The Period Ending December 31, 2013

	Approved Budget	December Actual	LIFE-TO-DATE ACTUALS				Remaining Budget
			Current Year	Previous Years	Total	% of Budget	
NW OPP Operations Centre	\$7,500,000	\$613,969	\$5,184,142	\$1,143,639	\$6,327,781	84%	\$1,172,219
Equipment for New Officers 13	\$16,000	\$0	\$16,172	\$0	\$16,172	101%	\$(172)
New Vehicle Radio 2013	\$12,000	\$0	\$11,969	\$0	\$11,969	100%	\$31
CW OPP Ramp Heating System	\$40,000	\$2,230	\$2,230	\$0	\$2,230	6%	\$37,770
<b>Total Capital</b>	<b>\$7,568,000</b>	<b>\$616,198</b>	<b>\$5,214,512</b>	<b>\$1,143,639</b>	<b>\$6,358,151</b>	<b>84%</b>	<b>1,209,849</b>





**Ontario Provincial Police  
County of Wellington Detachment**

Inspector Scott Lawson

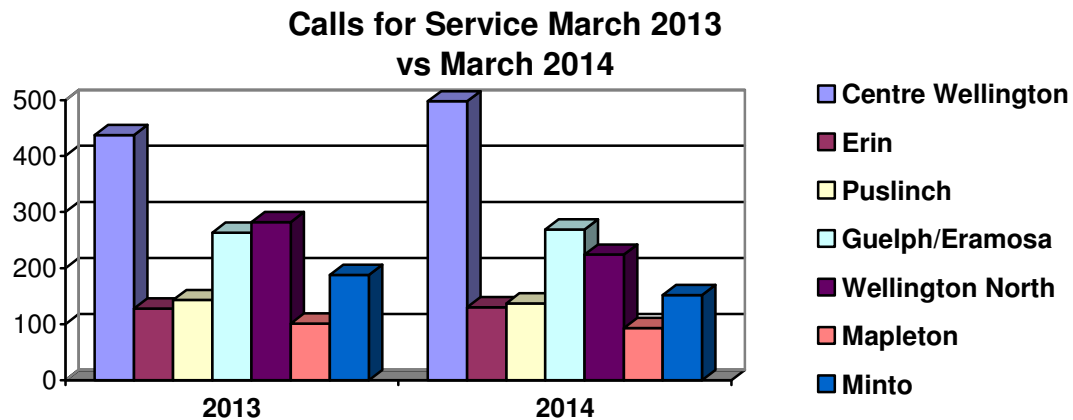
**Report for the  
County of Wellington Police Services Board**

**April 2014**

This report covers the period from March 1<sup>st</sup>, 2014 to March 31<sup>st</sup>, 2014



## Calls for Service



## Calls For Service

Municipality	2008	2009	2010	2011	2012	2013	2014 YTD
Centre Wellington	6,236	6,240	6,214	5,996	6,449	5,961	1,352
Town of Erin	2,079	2,110	2,152	2,156	2,322	2,167	414
Puslinch Township	1,987	1,900	1,836	2,157	2,404	2,178	455
Guelph/Eramosa	3,035	3,214	3,224	3,615	3,272	3,397	806
Wellington North	3,313	3,295	3,172	3,169	3,136	3,337	675
Township of Mapleton	1,250	1,209	1,252	1,320	1,322	1,349	332
Town of Minto	2,546	2,352	2,322	2,384	2,725	2,524	489
Provincial	2140	1997	2,378	2,392	2,694	3,214	688
<b>Totals</b>	<b>22,586</b>	<b>22,317</b>	<b>22,550</b>	<b>23,189</b>	<b>24,324</b>	<b>24,127</b>	<b>5,211</b>

## Victim Services Wellington

2014 Year to Date Calls for Assistance County of Wellington OPP	Previous Year Totals	
<b>19</b>	2011	105
	2012	122
	2013	100

## 911 Calls

2014 YTD	402
2011	2,340
2012	2,683
2013	2,520

## Ontario Sex Offender Registry

2014 Year to Date OSOR Registrations	Previous Year Totals	
<b>15</b>	2011	67
	2012	69
	2013	70

## False Alarms

2014 YTD	208
2011	946
2012	911
2013	961

\*This is NOT the number of sex offenders residing in Wellington County



## Crime

<b>Crimes Against Persons</b>	<b>2013 YTD</b>	<b>2014 YTD</b>
Homicide	0	0
Sexual Assault	26	16
Robbery	0	2
Assault	81	52

<b>Other Crime</b>	<b>2013 YTD</b>	<b>2014 YTD</b>
Fraud Investigations	88	47
Drug Investigations	95	84

<b>Crimes Against Property</b>	<b>2013 YTD</b>	<b>2014 YTD</b>
Break & Enter	73	39
Auto Theft	14	20
Theft	208	141
Mischief	101	62

<b>Other Investigations</b>	<b>2013 YTD</b>	<b>2014 YTD</b>
Domestic Disputes	123	81
Missing Persons	15	17

## Traffic

### Enforcement

<b>Traffic</b>	<b>YTD</b>
Speeding	1,626
Seatbelt Offences	50
Careless Driving	69
Drive Under Suspended	50
Distracted Driver Offences	101
Other Moving Violations	71
Equipment and Other HTA	609
No Insurance - CAIA	28

<b>Other Provincial Acts</b>	<b>YTD</b>
Liquor Licence Act	54
Trespass to Property Act	46
Other CAIA	32
Other Provincial Acts	17

<b>By-Law Offences</b>	<b>YTD</b>
By-Law Offences (General)	522
Taxi By-Law	0

<b>County of Wellington OPP Year To Date Total</b>	<b>3,107</b>
--	--------------

<b>West Region Traffic Unit Year To Date Total</b>	<b>168</b>
--	------------

YTD Total Traffic	2,604
YTD Total Other Provincial	149
YTD Total By-Law	522

<b>2014 Year to Date POA Charges</b>	<b>3,275</b>
2013 Year to Date POA Charges	4,281

### Drinking and Driving

<b>Impaired Driving</b>	<b>2013 YTD</b>	<b>2014 YTD</b>
R.I.D.E. Vehicle Stops	18,282	7,876
Roadside Alcotests	243	195
Warn Suspensions	51	44
ADLS Suspensions	28	41
Persons Charged	28	41

### Racing

<b>YTD HTA Sec. 172 Impoundments</b>	<b>Previous Year Totals</b>	
<b>17</b>	2011	80
	2012	82
	2013	93

### Parking Enforcement

<b>Municipality</b>	<b>2013 YTD</b>	<b>2014 YTD</b>
Centre Wellington	228	407
Erin	12	7
Puslinch	91	64
Guelph / Eramosa	130	95
Wellington North	29	13
Mapleton	9	6
Minto	10	9
County / Other	0	0

<b>Parking Totals</b>	<b>509</b>	<b>601</b>
-----------------------	------------	------------



## Traffic

### Suspect Apprehension Pursuits

2014 YTD Pursuits / Fail to Stop for Police	Previous Year Totals	
0	2011	11
	2012	17
	2013	8

## Traffic Initiatives

### R.I.D.E

The Wellington County Traffic Unit conducted a total of 40 R.I.D.E initiatives across the County checking 2,776 vehicles.

### Snow Vehicle Patrols

The Wellington County Traffic Unit logged 4,000kms of snow vehicle patrol during the month of March.

### Traffic Management Unit – Rotating Members

On March 28<sup>th</sup>, 2014 the selection process to fill two vacant Traffic Unit positions commenced. The successful candidates for these two positions will be announced in April 2014, once Command Staff has completed a review of the selection process results.



## Traffic

### Motor Vehicle Collisions

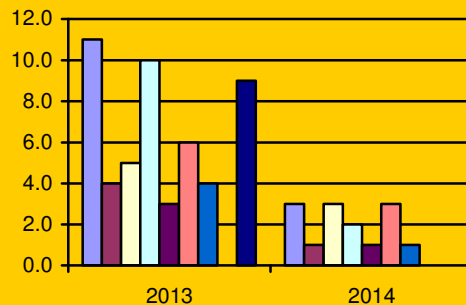
Month	Victims			Collisions								
	Total Victims	Persons Killed	Persons Injured	Total MVC	Fatal	PI	PD	Alcohol Involved			CMV	SMV
								Yes	No	Unk		
JAN	9	1	8	211	1	6	204	7	187	17	19	86
FEB	1	0	1	215	0	1	214	0	207	8	22	59
MAR	7	2	5	119	2	0	117	1	116	2	6	56
APR												
MAY												
JUN												
JUL												
AUG												
SEP												
OCT												
NOV												
DEC												
<b>TOTAL</b>	<b>17</b>	<b>3</b>	<b>14</b>	<b>545</b>	<b>3</b>	<b>7</b>	<b>535</b>	<b>8</b>	<b>510</b>	<b>27</b>	<b>47</b>	<b>201</b>

### Yearly Collision Summary

Collision Type / Characteristic	2008	2009	2010	2011	2012	2013	2014 YTD
Total Reportable MVC	2,027	1,918	1,813	1,976	1,875	2,095	545
Property Damage MVC	1,733	1,694	1,525	1,649	1,565	1,761	535
Personal Injury MVC	281	213	282	320	302	326	7
Fatal MVC	13	11	6	7	8	8	3
Persons Killed	13	11	6	7	9	9	3
Persons Injured	384	314	425	463	442	481	14
Alcohol Involved	61	76	42	57	63	37	8
<b>Total MVC</b>	<b>2,027</b>	<b>1,918</b>	<b>1,813</b>	<b>1,976</b>	<b>1,875</b>	<b>2,095</b>	<b>545</b>

### Car vs Deer Collisions

Municipality	2013 YTD	2014 YTD
Centre Wellington	11	3
Erin	4	1
Puslinch	5	3
Guelph / Eramosa	10	2
Wellington North	3	1
Mapleton	6	3
Minto	4	1
City of Guelph	0	0
Provincial Highways	9	0
<b>Total Collisions</b>	<b>52</b>	<b>14</b>





## Youth Crime

### School Resource Officer Program

*School statistics are now being reported by school year (September – June)*

Student Population		2009-10	2010-11	2011-12	2012-13	2013-14
CWDHS	Centre Wellington DHS	1466	1398	1398	1493	1285
EHS	Erin High School	578	578	578	610	630
NDSS	Norwell DSS	775	716	716	751	646
WHSS	Wellington Heights SS	686	661	661	683	620

### 2013 – 2014 Secondary School Criminal Incidents (Sep – Jun)

Incident Type	CWDHS	EDHS	NDSS	WHSS	YTD Total
Assault	4	6	10	11	31
Mischief	5	9	13	2	29
Threats	7	13	13	10	43
Theft	7	7	9	9	32
Other Criminal	1	1	2	8	12
Drugs	10	8	8	18	44
<b>Total</b>	<b>34</b>	<b>44</b>	<b>55</b>	<b>58</b>	<b>191</b>

### 2013 – 2014 Secondary School Provincial Offences Act Incidents (Sep – Jun)

Incident Type	CWDHS	EDHS	NDSS	WHSS	YTD Total
Highway Traffic Act	5	0	17	4	26
Liquor Licence Act	0	0	0	0	0
Trespass to Property	1	5	5	10	21
Other	2	1	0	2	5
<b>Total</b>	<b>8</b>	<b>6</b>	<b>22</b>	<b>16</b>	<b>52</b>

## Meetings / Presentations

### Centre Wellington DHS

- No notable meetings or presentations

### Erin DHS

- No notable meetings or presentations

### Norwell DSS

- PC Clements attended a training seminar in London concerning Cyber Bullying, Sexting, Internet Safety & Restorative Justice
- PC Clements also attended the At Risk Youth Committee meeting in the City of Guelph

### Wellington Heights SS

- PC Watt conducted a presentation for the Centre Wellington Career Class regarding a career in policing
- PC Watt also attended the training seminar in London concerning Cyber Bullying, Sexting, Internet Safety & Restorative Justice



- A meeting was held with F&CS regarding an elementary student with unpredictable behaviour and escalating aggression. All resources were present at the round table meeting
- Organization of students and teachers for OSAID conference in April 2014 has begun

## **Notable School Related Incidents and Events**

### **Centre Wellington DHS**

- PC Clements assisted ambulance dispatched to CWDHS after a female party had a severe allergic reaction. Police and ambulance were able to provide quick medical attention and the female party was transported to hospital without any major injuries
- Police received information that a student was possibly bringing a firearm to CWDHS to settle a dispute. The OPP SPEAR Program was put into effect, along with SRO officers, Canine, ERT and Patrol officers. Superintendent Doug MORRELL was extremely happy with the OPP response and thankful that a safe environment was kept in place at CWDHS. The day ended without incident

### **Erin DHS**

- PC Schubert attended the CWOASSA Hockey Championship as an assistant coach

### **Norwell DSS**

- No notable School related incidents

### **Wellington Heights SS**

- PC Watt. I have the pleasure to inform you that the MADD Wellington Chapter is excited to sponsor Brett for the upcoming 2014 OSAID conference. Please thank Brett for all the hard work and the difference he makes not only in the school but in the community. The MADD Wellington Chapter would also like to contact Brett through email if possible to form a valued partnership for future events and to provide future support as he continues to lead the OSAID group. A special thanks to the OPP for talking the initiative and reaching out to the students for MADD. Please keep our organization in mind for future workshop events. I will be sending you another email with more details with regards to the conference booking once I talk to the representative. Thanks again. Best regards, Christine McCallum MADD Wellington Chapter.
- PC Watt attended and assisted students completing the police fitness test. She also gave a presentation regarding standards for police recruitment
- Ongoing police investigation regarding a residence where students are buying marijuana during school hours.
- Sexual assault investigation from February 2014 complete. Allegations were unfounded
- Two incidents involving minor thefts. One from a locker and the other in the change room. Students reminded not to give out locker combinations and to not leave valuables in the locker room.



## Canine Unit

### 2014 Calls for Service and Hours

Occurrence Type	Initial (Calls)	Initial (Hours)	Assist (Calls)	Assist (Hours)	YTD (Calls)	YTD (Hours)
Occurrence Totals (OPP)	3	17.00	2	15.00	5	32.00
Occurrence Totals (Other)	0	0.00	0	0.00	0	0.00
Occurrence Totals (Combined)	3	17.00	2	15.00	5	32.00

Canine Handler: Provincial Constable Barry REID

### Notable Incidents and Events

**Date:** March 10 & 11, 2014

**Location:** Wellington

Canine Unit training involving drug searches

**Date:** March 13, 2014

**Location:** Niagara Detention Centre

Canine search requested at Niagara Detention Centre. Wellington County OPP Canine Unit assisted Corrections Canine Handler NEWHOOK. Jag searched Unit A and B and an indication was given on coveralls located on the lower bunk. A joint was located directly above on the upper bunk

**Date:** March 14, 2014

**Location:** Mount Forest

Wellington County OPP Crime Unit requested Canine Unit assistance with execution of a CDSA warrant at the residence in Mount Forest. Entry was made and three persons were arrested. Numerous used hypodermic needles were located throughout the small apartment, due to the obvious health risk to Jag a canine search was not conducted.

**Date:** March 18 & 19, 2014

**Location:** Wellington

Canine Unit training involving drug searches

**Date:** March 21, 2014

**Location:** Georgian Bluffs

Canine Unit requested to assist with execution of CDSA search warrant. The warrant was executed without incident and DES located a small dismantled marihuana grow operation, as well as a small amount of marihuana. Jag used to search residence after hand search was completed, no indications given

**Date:** March 25, 2014

**Location:** Wellington

Canine Unit training involving aggression work for Knox and Drug searching for Jag

**Date:** March 26, 2014

**Location:** Central North Correction Centre

Central North Correction Centre requested assistance and a search was conducted of parts of Unit 1-A, 5-D and 6-B. No indications were given

**Date:** March 28, 2014

**Location:** Wellington

Canine Unit training involving drug searching, tracking and aggression training





## Auxiliary Unit

Coordinator: Provincial Constable John PEPPLER

Unit Commander: Auxiliary S/Sgt. B. MC GIMSIE

### Notable Incidents and Events

- Community event requests were once again low during the month of March, but S/Sgt. McGimsie reports that a large amount of requests for this summer have started to arrive in South Wellington. He advises that this summer will be quite busy
- The two new Auxiliary members have now completed the testing phase of the Auxiliary process and are awaiting their results prior to joining the Unit.

### Unit Activity – March 2014

- SafeGuard Audits
- SafeGuard Display at the Wellington North Showcase
- Tour of the London Communications Centre

## Media

Provincial Constable Bob BORTOLATO & Provincial Constable Cheri ROCKEFELLER

### Notable Incidents and Events

- Throughout the month of March the Media Unit issued 54 media releases
- On March 4<sup>th</sup>, 2014 PC Bortolato attended a meeting of the Wellington North Township & Wellington North Power employees. He spoke about the hazards associated with distracted driving, which included a video presentation.



Wellington North Township & Wellington North Power employees at a presentation by PC Bortolato on the hazards of distracted driving



## County of Wellington OPP Report for the Police Services Board

- On March 21<sup>st</sup>, 2014 PC Bortolato made a presentation at Public Health in Fergus concerning personal Safety. The presentation was directed at nurses who make home visits and for health inspectors who attend various businesses throughout the course of their work day.
- On March 26<sup>th</sup>, 2014 PC Krpan and PC Bortolato attended JD Hogarth Public School in Fergus and talked to grade 7 & 8 students. The event was called "The Power of Positive Choices", each session last 50 minutes and both officers presented to four groups of 35 students, 280 students in total. The topics discussed included Peer to Peer Relationships, Youth and the Law, Online Safety and Drug & Alcohol Awareness



PC Krpan at the "Power of Positive Choices" event held at JD Hogarth Public School on March 26<sup>th</sup>, 2014.



## OPP K.I.D.S Program / D.A.R.E

Coordinator: Provincial Constable Kelly KRPAN

### Meetings / Presentations

- DARE being taught at the last few schools in Arthur, Minto-Clifford Township by PC Gromeder. PC Gromeder will be winding down over the next few months which will permanently phase out DARE in Wellington County
- OPP KIDS in South Wellington will be celebrating their graduations in the month of March. This will contribute to two successful rounds of the ten week program.
- March 27<sup>th</sup> and 28<sup>th</sup> Lyon's Club member, Daryl Nichol, attended with PC Krpan to two graduations at Rockwood Public School and Eramosa Public School. T-shirts were handed out to students paid for by the Lyon's Club.
- March 31<sup>st</sup> Fergus Optimist Club member, George Baily, attended with PC Krpan for the graduation ceremonies at Salem Public School and St. Mary Catholic School in Elora. Water bottles and anti-bullying bracelets were supplied to each student paid for by the Fergus Optimists. A \$25.00 gift certificate for Cineplex Theatres was also supplied by the Fergus Optimists. The gift certificate was awarded to the first place winners from each school for an anti-bullying poster contest brought on by the OPP KIDS Program coordinator, PC Krpan
- March 19<sup>th</sup> Elora Public School presentation to grade 7 & 8 classes. Online safety presentation very well received by all
- March 25<sup>th</sup> training day in London for PC Krpan. Educational awareness and communication tools for our students in middle school and high school
- The Power of Positive Choices full day seminar held by J.D. Hogarth Public School. Eight Presentations given to students in grade 7 & 8 from PC Krpan and PC Bortolato. Presentations included Youth and The Law, Peer to Peer Relationships (bullying, peer pressure strategies), On-line safety and awareness and Cyber Bullying
- Presentation of Online Safety and Awareness at Elora Christian School. Word of mouth in the school system alerted this school to seek out the OPP for presentations. The Principal would like OPP to attend again for Drug and Alcohol Awareness presentations

### OPP KIDS Initiatives

- OPP KIDS Program has started up again for new 10 week sessions in Erin Public School, Brisbane Public School, St. John Brebeuf Catholic School, Minto-Clifford Public School, Elora Public School and Ross R. McKay Public School.
- The OPP KIDS Program will be introduced to all grade 7 & 8 students of the above mentioned schools, two presentations on Online Safety and Drug and Alcohol Awareness. Scheduling will commence in April



## Administration

### Revenue

Year	County	Provincial	Total
2009	\$73,307.32	\$9,552.04	\$82,859.36
2010	\$87,122.04	\$7,899.10	\$95,012.14
2011	\$81,274.66	\$9,233.56	\$90,508.22
2012	\$75,836.60	\$5,043.55	\$80,880.15
2013	\$70,202.29	\$5,373.66	\$75,575.95
2014	\$18,178.00	\$1,782.70	\$19,960.70

### Paid Duties

Year	Paid Duties	Officers	Hours	Admin Fees
2010	165	298	1,648.50	\$3,075.00
2011	207	446	2,455.25	\$5,325.00
2012	165	312	1,890.75	\$2,775.00
2013	227	469	3300.00	\$1,575.00
2014	27	45	251.50	\$150.00

## Personnel

### Secondary Employment

**Secondary Employment** is any business, undertaking or calling that involves financial gain in which an employee participates while not on duty, including political activity.

Provincial Constable L. GROMEDER – Waterloo Region District School Board

### Complaints

Complaint Type by Status	2009	2010	2011	2012	2013	2014
Complaints Received	19	13	16	16	12	6
Complaints Resolved	10	8	8	5	0	1
Complaints Unfounded	6	2	6	8	5	2
Complaints Withdrawn	2	3	1	2	4	1
Complaints Ongoing	1	0	1	1	3	2

No	Complaint Type	Status	No	Complaint Type	Status
1	Public	Closed			
2	Public	Closed			
3	Public	Ongoing			
4	Public	Closed			
5	Public	Closed			
6	Public	Ongoing			

**Internal Complaint** is an allegation by someone who is not a member of the public concerning the policy, services, local policies of a contract location, or the conduct of an employee or volunteer of the OPP and includes a WDHP allegation, and/or an allegation of workplace violence.

**Public Complaint** is a complaint by a member of the public concerning the policy, services, local policies of a contract location, or the conduct of an employee of the OPP.



## Personnel

### Acknowledgements

Date	Member(s)	Particulars
24 Feb 14	PC R. CARSON	On February 24, 2014 PC Carson was dispatched to a male possibly suffering from mental health issues and exhibiting stalking behavior towards female employees. PC Carson used a coordinated approach including physicians and social agencies to assist in dealing with this male. His initial involvement with the subject and his use of community agencies in dealing with problem were instrumental in getting the male the assistance he required.
05 Mar 14	PC S. HAMMOND	While off duty, PC S. HAMMOND took it upon herself to interject and arrest a shoplifting suspect at a Bulk Barn within the City of Toronto. Her supervisor received a phone call from Toronto Police Service acknowledging PC HAMMOND for making the arrest. She was commended for getting involved and preventing a property crime in another jurisdiction.
14 Mar 14	PC S. LANGHORN PC J. CUNNINGHAM PC F. VACHON PC M. SCHWINDT	<p>On March 14, 2014 Wellington County OPP were dispatched to a male possibly suffering from mental health issues and exhibiting irrational behavior. PC Schwindt was engaged and had coordinated a community approach to address the ongoing issues with the victim. Due to the investigation's complexity and mental health issues, attending officers, PC Vachon, PC Cunningham and PC Langhorn were praised by CMHA for their professionalism and compassion in dealing with the male which resulted in him being compliant and transported for further assessment and care.</p> <p>These officers have been recognized for demonstrating professionalism, compassion and effectiveness in dealing with the increasingly complex and challenging environment involving mental health persons.</p>





**14 Mar 14**    **PC J. YANTZI**  
                 **PC T. COWIE**  
                 **PC E. WHITEHEAD**  
                 **PC R. BRACNIK**  
                 **PC G. HENDERSON**  
                 **PC B. REID**  
                 **SGT S. INGHAM**

On March 14, 2014 members of the Wellington County OPP Street Crime Unit, Canine Unit & ERT Team along with London DES executed a Controlled Drugs and Substances Act search warrant at a residence in the Town of Mount Forest. Upon execution of the warrant a male party was taken into police custody, without incident, and was arrested for Possession of Methamphetamine for the purpose of trafficking.

During the subsequent search of the residence police located and seized:

12 grams of methamphetamine, 7 grams of marihuana, 14 Hydromorphone pills, 7 morphine pills, 16 Tylenol three pills, 2 scales, packaging material, debt lists, \$270.00 in Canadian currency organized in denominational order, 8 cell phones and a prohibited weapon. There were also 2 replica handguns, a machete and weapons stored throughout the apartment.

As a result of the arrest and residence search the following charges were laid:

1. Possession of methamphetamine for the purpose of trafficking. 5(2) CDSA
2. Possession of marihuana for the purpose of trafficking 5(2) CDSA
3. Possession of morphine for the purpose of trafficking 5(2) CDSA
4. Possession of Hydromorphone for the purpose of trafficking 5(2) CDSA
5. Possession of Codeine for the purpose of trafficking 5(2) CDSA
6. Unauthorized possession of a prohibited weapon 91(2) CC

## Other Notables

### Noteworthy Information and Events

#### 2016 International Plowing Match (IPM)

On March 24<sup>th</sup>, 2014 preliminary discussions began between the IPM Committee; Ron Faulkner, Walter Trachsel and Wellington County OPP officers. The next meeting is scheduled for April 2014 with Wellington County OPP & IPM members meeting with Perth County OPP to understand the challenges and best practices that can be implemented at the Wellington/Minto event in 2016. Perth County OPP provided security for the 2013 Mitchell IPM

The 2016 International Plowing Match and Rural Expo is scheduled for September 20-24, 2016 in the Town of Minto, Wellington County.



## **2013 Annual Report - Wellington County OPP**

The public will soon have a chance to get insight into the operations and administration of the Wellington County OPP Detachment. On March 27<sup>th</sup> the 2013 Annual Report was completed and approved for printing by the Wellington Advertiser. The yearly pictorial will be arriving shortly at your front door.

### **Wellington County OPP Detachment Audit**

During the week of March 17<sup>th</sup> to March 21<sup>st</sup> Wellington County OPP received a full comprehensive quality assurance audit of ALL detachment processes. A Sergeant from the Quality Assurance Unit out of General Headquarters in Orillia assisted by officers from Bruce Peninsula OPP reviewed our property vaults and processes, our prisoner log processes as well as our financial processes. Overall the result was very positive with the auditor advising that if she gave out gold stars Wellington County OPP would deserve one. The quality and organization of our property and subsequent paperwork was excellent.

### **Motor Vehicle Collision**

On Monday, March 17<sup>th</sup>, 2014 at approximately 9:48 pm, while travelling southbound on Wellington Road 7 in the Township of Pilkington, PC F. Vachon observed a northbound black Chevrolet travelling at a very high rate of speed.

A short time later police came across a motor vehicle collision involving the suspect vehicle and a taxi that just exited the Tim Horton's parking lot on the outskirts of Elora.

Following an extensive collision and criminal investigation the following charges were laid against the suspect:

- Count 1: CC 255(2) Driving While Ability Impaired Cause Bodily Harm x 2
- Count 2: CC 254(2) Fail or Refuse to Provide Sample
- Count 3: CC 249(3) Dangerous Operation of Motor Vehicle Cause Bodily Harm x 2
- Count 4: HTA 53(1) Driving while under suspension

The investigation is continuing.



**Provincial Constable Andrew “Andy” Houston**

Peacefully with his family by his side, at Louise Marshall Hospital in Mount Forest on Sunday March 30<sup>th</sup>, 2014. Andrew “Andy” Joseph Houston of Mount Forest in his 41st year. Beloved husband of Sara (McQueen) Houston. Cherished father of Jack, Sam and Max. Dear son of Joe and Joyce Houston of Long Sault. Loved brother of Erin and Craig Bowditch of Ottawa and Alison Houston and Lara Ruppell of Edmonton. Loved uncle of Ariana Bowditch, Brooke Bowditch and Brayden Bowditch.

Andy will be greatly missed by all who knew him. Andy served as a proud member of the O.P.P working out of Mount Forest for over 15 years.

Memorial donations to the Louise Marshall Hospital-Oncology Department or to the Canadian Cancer Society would be appreciated by the family.





# Processing Activity Report

Page: 1

Data Type: Parking

Creation Date/Time: 01/04/2014 8:14:02 AM

Transaction dates of 01/03/2014 through 31/03/2014

**The County of Wellington**

Agency: All

Ticket Activity	Number	Value
Tickets - Entered		
AutoCite Ticket	0	\$0.00
Manually Entered Ticket	277	\$5,820.00
Skeletal Ticket	0	\$0.00
Subtotal Tickets Entered	277	\$5,820.00
Tickets - Reactivations		
Voids - Reinstated	0	\$0.00
Dismissals - Reversed	0	\$0.00
Waived - Reversed	0	\$0.00
Subtotal Ticket Reactivated	0	\$0.00
Tickets - Removed		
Voided	0	\$0.00
Dismissed	14	\$280.00
Waived	0	\$0.00
Skeletal Ticket Matches	0	\$0.00
Subtotal Ticket Removed	14	\$280.00
Total Ticket Activity	263	\$5,540.00
Fines and Fees Added		
Fines Added	0	\$0.00
Late Fees Added	139	\$1,390.00
NSF Fees Added	0	\$0.00
Other Fees Added	56	\$972.75
Total Fines and Fees Added	195	\$2,362.75
Fines and Fees Removed		
Fines Removed	1	\$20.00
Late Fees Removed	2	\$20.00
NSF Fees Removed	0	\$0.00
Other Fees Removed	0	\$0.00
Total Fines and Fees Removed	3	\$40.00
Total Change from Ticket Activity and Added Fees		\$7,862.75

Payment Activity	Number	Fine	Late Fee	NSF Fee	Service Fee	Total \$
Ticket - Payments						
Fully Paid	194	\$3,865.00	\$650.00	\$0.00	\$156.75	\$4,671.75
Partially Paid	15	\$420.00	\$10.00	\$0.00	\$224.00	\$654.00
Over Payments	0	\$0.00	\$0.00	\$0.00	\$0.00	\$0.00
Subtotal Payments	209	\$4,285.00	\$660.00	\$0.00	\$380.75	\$5,325.75
Outside Payments	209	\$4,285.00	\$660.00	\$0.00	\$380.75	\$5,325.75
Ticket Payments Rescinded						
Payment Reversals	0	\$0.00	\$0.00	\$0.00	\$0.00	\$0.00
NSF Reversals	0	\$0.00	\$0.00	\$0.00	\$0.00	\$0.00
Subtotal Rescinded Payments	0	\$0.00	\$0.00	\$0.00	\$0.00	\$0.00
Refunded Overpayments	0	\$0.00				\$0.00
Payments	209	\$4,285.00	\$660.00	\$0.00	\$380.75	\$5,325.75
Total Fees Paid				0		\$0.00
Gross Revenue( Total Payments - Total Fees Paid )						\$5,325.75
Adjustments	Uncollectable Fines and Fees			0		\$0.00

Net Database Change( Total Change from Activity and Added Fees - Total Payments - Adjustments )						\$2,537.00
---	--	--	--	--	--	------------



# COUNTY OF WELLINGTON

## COMMITTEE REPORT

**To:** Chair and Members of the Police Services Board  
**From:** Kelly-Ann Wingate, Parking, Licensing and Alarm Coordinator  
**Date:** Wednesday, April 9, 2014  
**Subject:** False Alarm Revenue Report

False Alarm revenue collected for 2014.

Month	False Alarms sent to the County for invoicing	Amount invoiced to customers	Amount collected to date
January	68	\$2600	\$2700
February	0	\$200	\$3300
March	66	\$4700	\$900
April			
May			
June			
July			
August			
September			
October			
November			
December			
2014 YTD	134	\$7500	\$6900
2013 YTD	122	\$10,900	\$9950
2013 Totals	463	\$39,400	\$38,250

### Recommendation:

That the April 2014 False Alarm Revenue report be received for information.

Respectfully submitted,

Kelly-Ann Wingate  
Parking, Licensing and Alarm Coordinator

## Kelly-Ann Wingate

---

**From:** Wallace, Kathy <Kathy.Wallace@oapsb.ca>  
**Sent:** Tuesday, April 01, 2014 9:44 AM  
**To:** Wallace, Kathy  
**Subject:** Sponsorship for OAPSB 2014 Conference  
**Attachments:** PSB Member Sponsorship Opportunities - OAPSB 2014.doc

On behalf of President Ken East,

It is my pleasure to advise you that the Ontario Association of Police Services Boards will be holding the 2014 Spring Conference, Section 10 Seminar & Annual General Meeting in Toronto from May 21st – May 24<sup>th</sup>, 2014. The theme of the conference will be *"Integrated Community Safety"*.

We have put together what promises to be another topical and indeed exciting program. Highlights include:

- Dr. Hugh Russell on the newest ground-breaking model for policing
- A sampling from around the province of local initiatives that are transforming the way that policing is occurring
- This year's Section 10 Seminar
- Updates regarding advocacy, coordinated bargaining, and what the Ontario Ombudsman has been up to!

As in years past, the success of the 2014 Conference will be due to the cooperation and support of all policing agencies. To assist the OAPSB, I ask your Police Services Board to **consider a donation in support of this conference**. Your financial support will be utilized effectively to support the OAPSB mandate and to help defer some of the conference costs. Your sponsorship will be duly recognized at the conference. All contributions should be payable to the Ontario Association of Police Services Boards and forwarded to our office located at 10 Peel Centre Drive, 1<sup>st</sup> Floor, Suite A, Brampton, ON, L6T 4B9.

Whether your board is in a position to contribute to the 2014 OAPSB Conference or not, I encourage you and your members to attend the conference as delegates. Detailed conference information is available OAPSB website at [www.oapsb.ca](http://www.oapsb.ca).

On behalf of the OAPSB, I thank you and your Board members for your consideration of this matter and I look forward to seeing you in Toronto in May 2014.

Yours sincerely,

Ken East  
OAPSB President



---

## 2014 SPRING CONFERENCE & ANNUAL GENERAL MEETING MEMBER SPONSORSHIP OPPORTUNITIES

---

LEVELS	DONATION RANGE	RECOGNITION/BENEFITS
Diamond	\$10,000 +	Corporate logo and material on OAPSB website, recognition on OAPSB website, letter of appreciation, video recognition at banquet, display booth and banners authorized, four reserved seating tickets to President's Banquet.
Gold	\$5,000 to \$9,999	Recognition on OAPSB website, letter of appreciation, video recognition at banquet, display booth and banners authorized and two reserved seating tickets to President's Banquet.
Silver	\$2,000 to \$4,999	Recognition on OAPSB website, letter of appreciation, video recognition at banquet, display booth and banners authorized and one ticket to President's Banquet.
Bronze	Up to \$2,000	Recognition on OAPSB website, letter of appreciation, video recognition at banquet.

---

### LEVELS OF SPONSORSHIP

---

\_\_\_\_\_  
Sponsorship Amount

\_\_\_\_\_  
Sponsorship Level

\_\_\_\_\_  
Name of Organization

\_\_\_\_\_  
Contact Person

\_\_\_\_\_  
Title

\_\_\_\_\_  
Phone

\_\_\_\_\_  
Email