



The Corporation of the County of Wellington

Police Services Board

Agenda

September 10, 2014

9:00 am

County Administration Centre

Guthrie Room

Members: Warden Chris White; Councillor Ray Tout, Russ Spicer (Chair), Kent Smith, Jeremy Vink

Pages

1. **Call to Order**
2. **Declaration of Pecuniary Interest**
3. **Delegation:**
 - 3.1 Children's Safety Village Presentation
Mr. Al Leach, Vice President
4. **Minutes for Approval** 3 - 6
June 11, 2014
5. **Financial Statements as of August 31, 2014** 7 - 8
6. **OPP Billing Model Presentation** 9 - 24
7. **Detachment Commander's Reports**
 - 7.1 June 2014 25 - 42
 - 7.2 July 2014 43 - 56
 - 7.3 August 2014 57 - 69
8. **Parking Ticket Reports - June, July and August 2014** 70 - 72
9. **September 2014 False Alarm Revenue Report** 73 - 73
10. **Community Safety Zone Request on Eliza St., Arthur** 74 - 76
11. **OPP Auction Update - Verbal**

12. Closed Meeting

(Agenda emailed under separate cover)

13. Rise and Report

14. Adjournment

Next meeting date October 8, 2014 or at the call of the Chair.



**Corporation of the County of Wellington
Police Services Board
Minutes**

June 11, 2014
North Wellington Operations Centre
Community Room

Present: Warden Chris White
 Councillor Raymond Tout
 Russ Spicer (Chair)
 Jeremy Vink
 Kent Smith

Staff: Donna Bryce, County Clerk
 Ken DeHart, County Treasurer
 Kelly-Ann Wingate, Parking Licence and Alarm Coordinator
 Scott Wilson, Board Secretary

Also Present: Detachment Commander, Inspector Scott Lawson
 Jack Hunjan, Staff Sergeant
 Krista Miller, Staff Sergeant

1. Call to Order

At 9:00 am, the Chair called the meeting to order.

2. Declaration of Pecuniary Interest

There were no declarations of pecuniary interest.

3. Minutes for Approval

1/6/14

Moved by: Councillor Tout

Seconded by: Jeremy Vink

That the minutes of the May 14, 2014 meeting of the Wellington County Police Services Board be adopted.

Carried

4. Financial Statements and Variance Projections as of May 2014

2/6/14

Moved by: Jeremy Vink

Seconded by: Councillor Tout

That the Financial Statements and Variance Projections as of May 31, 2014 for Police Services be approved.

Carried

5. Police Services Contract – 1st Quarter Reconciliation

3/6/14

Moved by: Jeremy Vink

Seconded by: Councillor Tout

That the County Treasurer's report regarding Police Services Contract - 1st Quarter Reconciliation be received for information.

Carried

6. Municipal Performance Measurement Programme – Police Services

4/6/14

Moved by: Councillor Tout

Seconded by: Kent Smith

That the 2013 Municipal Performance Measures for Police Services be received for information.

Carried

7. Detachment Commander's Report

5/6/14

Moved by: Councillor Tout

Seconded by: Kent Smith

That the Detachment Commander's Report for June 2014 be received for information.

Carried

8. May 2014 Parking Ticket Report

6/6/14

Moved by: Jeremy Vink

Seconded by: Warden White

That the May 2014 Parking Ticket Report be received for information.

Carried

9. June 2014 False Alarm Revenue Report

7/6/14

Moved by: Jeremy Vink

Seconded by: Councillor Tout

That the June 2014 False Alarm Revenue Report be received for information.

Carried

10. Fergus Scottish Festival Advertisement - Verbal

8/6/14

Moved by: Warden White

Seconded by: Kent Smith

That the Police Services Board approve a quarter page advertisement in the Fergus Scottish Festival Programme, August 8 – 10, 2014.

Carried

11. Closed Meeting

9/6/14

Moved by: Councillor Tout

Seconded by: Kent Smith

That the Police Services Board move into a closed meeting for the purpose of considering intimate financial or personal matters or other matters that may be disclosed of such a nature, having regard to the circumstances, that the desirability of avoiding their disclosure in the interest of any person affected or in the public interest outweighs the desirability of adhering to the principle that proceedings be open to the public.

Carried

12. Rise and Report

9/6/14

Moved by: Councillor Tout

Seconded by: Kent Smith

That the Wellington County Police Services Board rise and report from the closed meeting.

Carried

13. Adjournment

At 10:11 am, the Chair adjourned the meeting until September 10, 2014 or at the call of the Chair.

Russ Spicer
Chair
Police Services Board



County of Wellington
Police Services
Statement of Operations as of
31 Aug 2014

	Annual Budget	August Actual \$	YTD Actual \$	YTD Actual %	Remaining Budget
Revenue					
Grants and Subsidies	\$267,600	\$0	\$102,435	38%	\$165,165
Licenses, Permits and Rents	\$153,600	\$14,080	\$111,078	72%	\$42,522
Fines and Penalties	\$75,000	\$4,410	\$40,886	55%	\$34,114
User Fees & Charges	\$79,000	\$7,856	\$54,626	69%	\$24,374
Other Revenue	\$1,000	\$0	\$62	6%	\$938
Total Revenue	\$576,200	\$26,345	\$309,087	54%	\$267,113
Expenditures					
Salaries, Wages and Benefits	\$137,400	\$11,409	\$92,301	67%	\$45,099
Supplies, Material & Equipment	\$40,500	\$2,548	\$32,818	81%	\$7,682
Purchased Services	\$359,800	\$12,607	\$223,916	62%	\$135,884
Transfer Payments	\$17,796,000	\$1,520,466	\$11,973,550	67%	\$5,822,450
Insurance & Financial	\$10,200	\$0	\$7,596	74%	\$2,604
Minor Capital Expenses	\$4,000	\$0	\$4,172	104%	\$(172)
Debt Charges	\$594,500	\$0	\$219,826	37%	\$374,674
Internal Charges	\$1,500	\$63	\$1,056	70%	\$444
Total Expenditures	\$18,943,900	\$1,547,092	\$12,555,236	66%	\$6,388,664
NET OPERATING COST / (REVENUE)	\$18,367,700	\$1,520,746	\$12,246,149	67%	\$6,121,551
Transfers					
Transfers from Reserves	\$(93,000)	\$0	\$0	0%	\$(93,000)
Transfer to Capital	\$52,000	\$0	\$52,000	100%	\$0
Transfer to Reserves	\$90,000	\$0	\$90,000	100%	\$0
Total Transfers	\$49,000	\$0	\$142,000	290%	\$(93,000)
NET COST (REVENUE)	\$18,416,700	\$1,520,746	\$12,388,149	67%	\$6,028,551



County of Wellington

Police Services

Capital Work-in-Progress Expenditures by Department All Open Projects For The Period Ending August 31, 2014

	Approved Budget	August Actual	LIFE-TO-DATE ACTUALS			% of Budget	Remaining Budget
			Current Year	Previous Years	Total		
NW OPP Operations Centre	\$7,500,000	\$101,364	\$724,631	\$6,327,781	\$7,052,412	94%	\$447,588
CW OPP Ramp Heating System	\$80,000	\$0	\$0	\$2,230	\$2,230	3%	\$77,770
New Officers Equipment 2014	\$12,000	\$0	\$0	\$0	\$0	0%	\$12,000
Total Capital	\$7,592,000	\$101,364	\$724,631	\$6,330,010	\$7,054,642	93%	537,358



ONTARIO PROVINCIAL POLICE

New OPP Billing Model

Policing with an Integrated Model

Municipality A

Police Services Act (PSA) Section 10/Contract

- Residential areas
- Two elementary schools
- Bedroom community
- Increase in summer population/cottages

Municipality C

PSA Section 5.1/Non-Contract

- Rural areas
- One elementary school
- Farming
- Increase in summer population/cottages

Municipality B

PSA Section 10/Contract

- Smaller urban hub
- Two high schools
- Four elementary schools
- Hospital
- Increase in summer population/cottages



PSA Provincial Responsibilities

- The King's Highway
- Five provincial parks
- Numerous waterways
- First Nation Territory
- Assist other police services
- Unincorporated Territory



Network of OPP Integrated Detachments

The integrated detachment is part of a larger detachment network that shares resources when required for major incidents, investigations, seasonal workload increases, etc.



Policing Resources

MUNICIPAL POLICING RESOURCES

Detachment Staff*

- Supervision
- Front-line Constables
- Civilian Administrative and Support

Support Positions*

(Cost-Recovery Formula)

- Communication Operators
- Prisoner Guards
- Provincial Police Academy and In-Service Training
- Uniform Recruitment
- Municipal Policing Bureau
- Quality Assurance
- Forensic Identification
- IT and Telephone Support
- Regional Headquarters

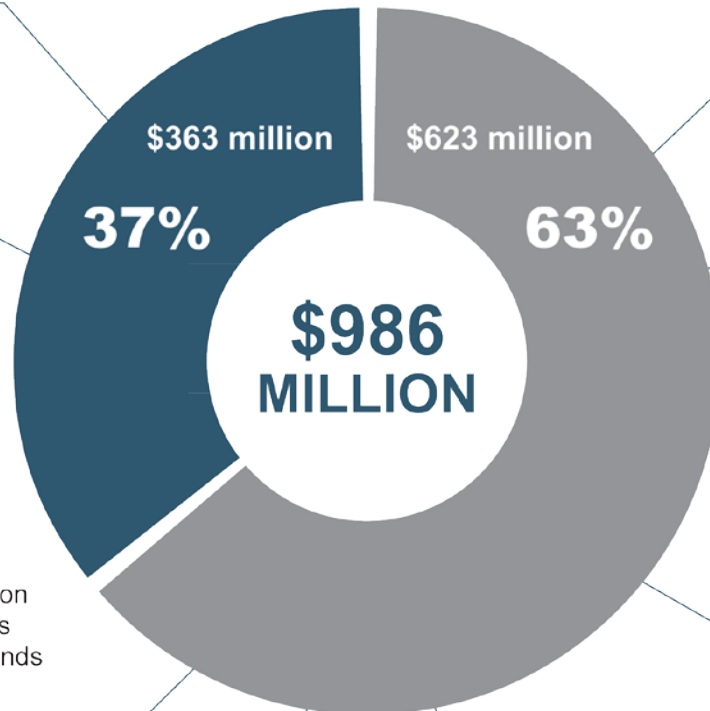
*Municipalities are billed for the portion of detachment and support positions required to meet their service demands

Aboriginal Policing

Unincorporated Territory

Auxiliary Policing

Crime Prevention



PROVINCIAL / SPECIALIZED RESPONSIBILITIES

Traffic Safety

- Aircraft Enforcement
- Provincial Traffic Safety Program
- Snowmobile All-Terrain Vessel Enforcement
- Waterways and King's Highway

Investigations

- Criminal Investigations
- Child Sexual Exploitation Investigations
- Anti-Rackets
- Organized Crime
- Investigation and Support

Intelligence

- Covert Operations
- Provincial Anti-Terrorism and Hate Crimes
- Analysis and Information
- Field Intelligence

Specialized Response Teams

- Tactical Emergency Medical Services
- Aviation Services
- Canine Unit
- Emergency Response Team
- Negotiations
- Tactics and Rescue Unit
- Underwater Search and Recovery Unit
- Urban Chemical Response Team

Source: OPP

Based on 2013 actual expenditures

Date: July 30, 2014 Ontario Provincial Police



Context for Action



Government Commitments

Former MCSCS Minister Madeleine Meilleur committed to working with municipalities to address the variations in OPP municipal policing costs at the 2012 and 2013 AMO Conferences, and the 2013 and 2014 Rural Ontario Municipalities Association (ROMA/OGRA) Conferences



Auditor General of Ontario Report (2012), Recommendation 7:

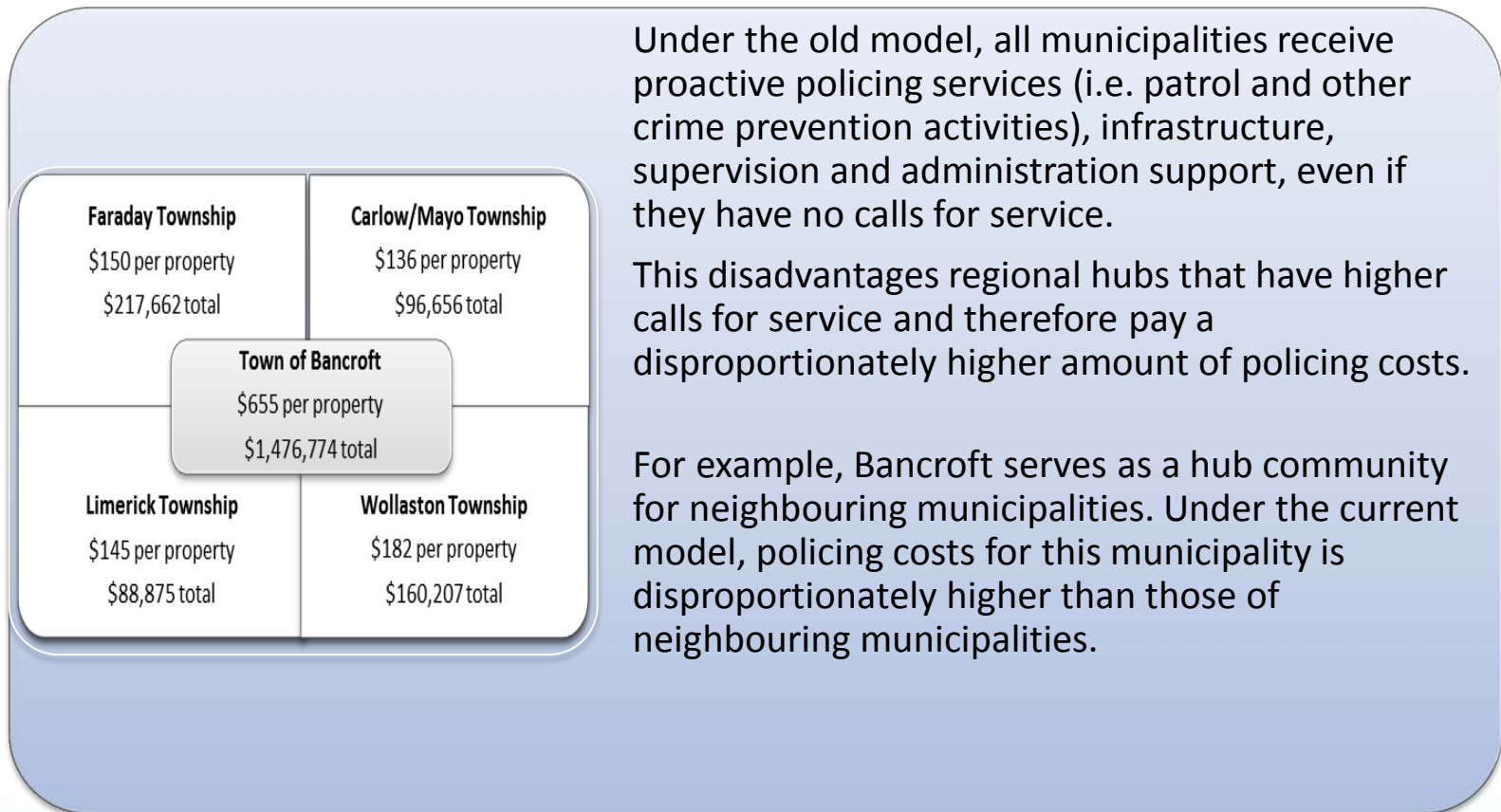
"...seek ways to simplify, and make more transparent OPP cost recovery methods...and address the issues in its costing and billing methods that result in municipalities paying different rates and consider phasing in cost increases over time rather than when contracts are renewed..."




Municipal Consultations

- OPP Working Group, established March 2013;
- Regional Municipal Engagement Sessions with 48 municipalities, April- May 2013;
- Online Survey, June –July 2013
- AMO Memorandum of Understanding, August 1 and October 3, 2013;
- 14 Municipal engagement sessions with 229 municipalities, October 29 - November 29, 2013;
- Online feedback forum, October 29 - December 13, 2013;
- AMO OPP Billing Steering Committee, convened in March 2014

Context for Action: Variation in Municipal Costs



Context for Action: AMO OPP Billing Steering Committee Advice

- 
- Support for using a 60/40 split for base plus calls for services approach
 - Review the allocation approach for the base policing costs
 - Phased implementation
 - Maintain Provincial Services Usage credit
 - Enhance the transparency and communication

New Billing Model

Municipal Detachment FTEs



BASE SERVICE

Patrol

(Cruiser, motorcycle, ATV, bicycle, etc.)

Crime Prevention

(Crime Stoppers, suicide prevention, safe schools, etc.)

Operational

(Negotiations, DNA data bank procedures, drug processing etc.)

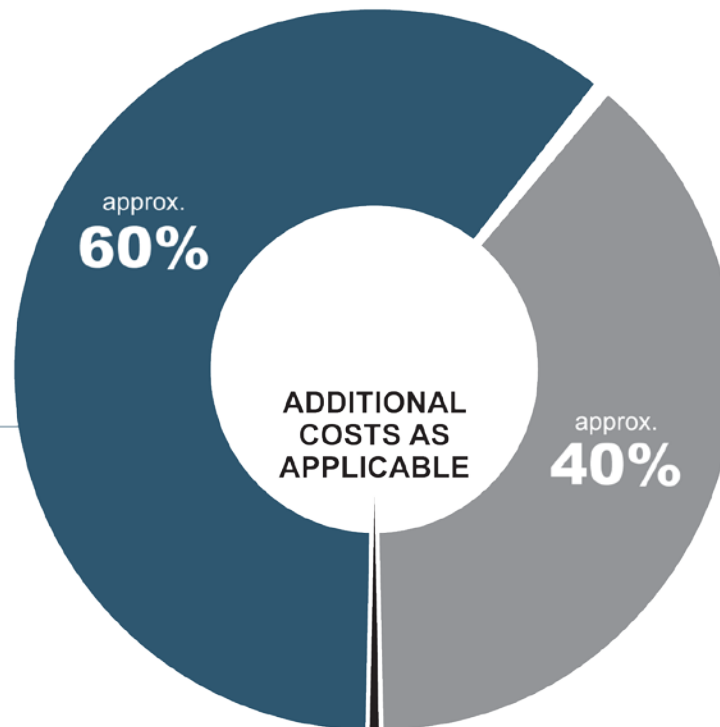
Training

(Block training, driver competency assessments, recruit training etc.)

Administrative Duties

(Meetings, shift preparation and conclusion, report writing, complaint investigation: public and internal etc.)

Other Legislated Activities



i.e. enhancements, overtime, cleaning/ caretaking, accommodations

Total Detachment FTEs less Provincial Detachment members, enhancements, caretakers and Provincial Service Usage resources.

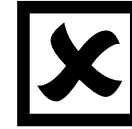
(Excluding Traffic)	7.0
Drugs	31.8
Drug Possession	6.0
Statutes	3.0
Traffic	3.3
Operational	3.4
Operational 2	1.2
Security Detail	12.6

Per Property Count



Households, including households classified as managed forests/farmland

Commercial and industrial properties (Note: properties with multiple units are considered as one property)



Farmland and Managed Forests with no households attached
Pipelines
Vacant Land

Households in Canadian Force Bases

Sample Municipal Bill

**Town of Mayberry
O.P.P. Annual Billing
Statement
For the period January 1 to December 31,
2015**

Base Service	Total Properties	1895	\$ 385,095
Calls for Service	Summary Below		\$ 381,195
Overtime			\$ 28,720
Cleaning/Caretakers			\$ 7,012
Total 2015 Policing Cost			\$ 802,022

**Calls For Service Billing
Summary**
Town of Mayberry
For the Period January 1 to December
31, 2015

Calls for Service Billing Workgroup	Calls for Service Count					2015 Average Time Standard	Total Weighted Time	% of Total Provincial Weighted Time	2015 Estimated Calls for Service Cost
	2010	2011	2012	2013	Four- Year Total				
Drugs	3	5	1	4	13	31.8	413	0.01%	\$ 8,847
Drugs Possession	14	21	30	13	78	6.0	468	0.01%	\$ 10,016
Operational	679	450	548	415	2092	3.4	7,113	0.11%	\$ 152,219
Operational 2*	183	178	165	132	658	1.2	790	0.01%	\$ 16,898
Other Criminal									
Code Violations	81	59	50	27	217	7.0	1,519	0.02%	\$ 32,508
Property Crime									
Violations	128	108	86	85	407	6.1	2,483	0.04%	\$ 53,132
Statutes and Acts	93	69	74	100	336	3.0	1,008	0.02%	\$ 21,572
Traffic	57	72	56	56	241	3.3	795	0.01%	\$ 17,020
Violent Criminal									
Code	70	55	46	56	227	14.2	3,223	0.05%	\$ 68,983
TOTAL	1308	1017	1056	888	4269		17,812	0.28%	\$ 381,195

* False Alarms, 911 (Hang-ups & Pocket Dials), Keep
the Peace

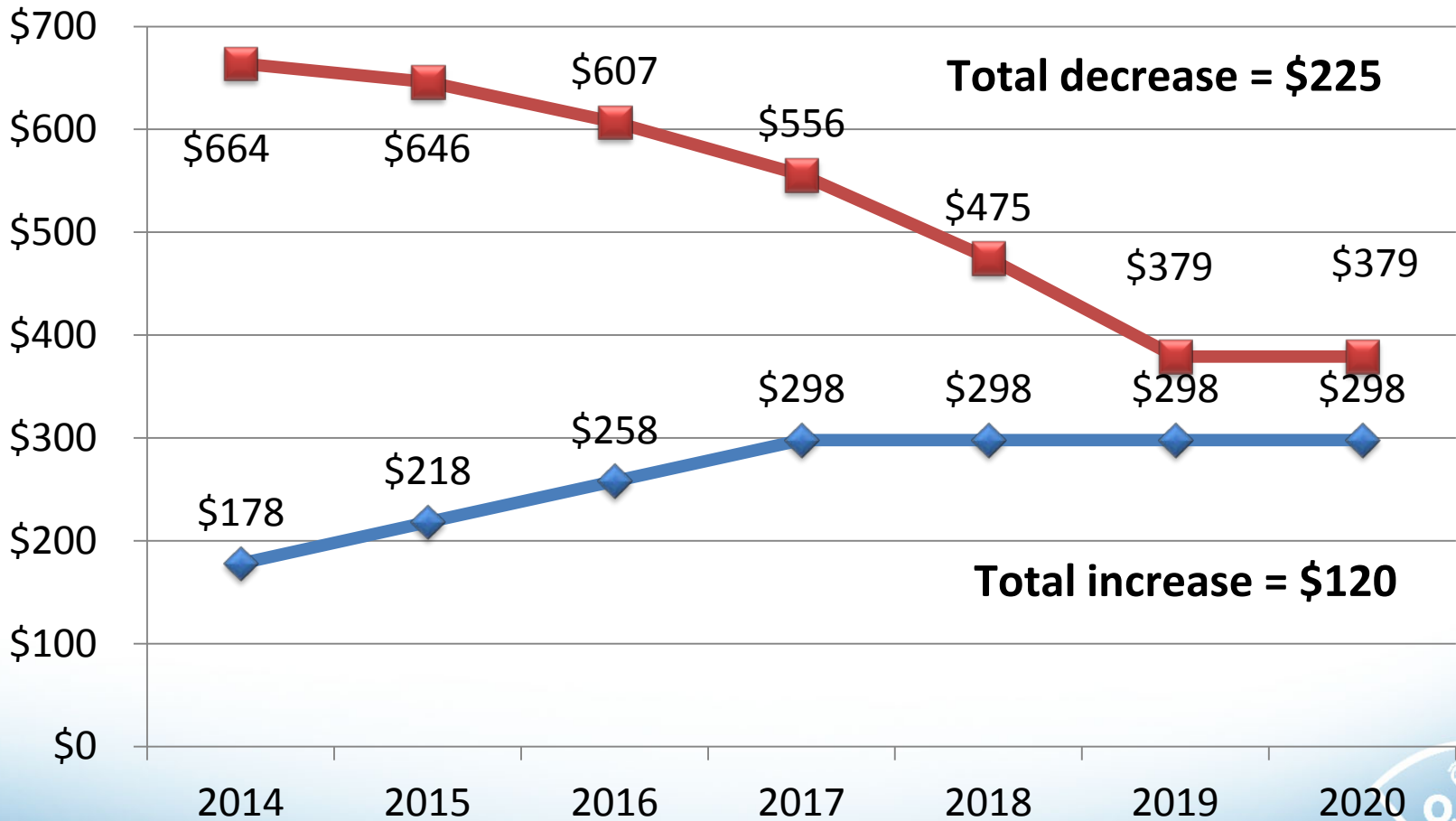
Provincial Total	1,590,755	6,402,533	100%	\$137,019,140
-------------------------	------------------	------------------	-------------	----------------------



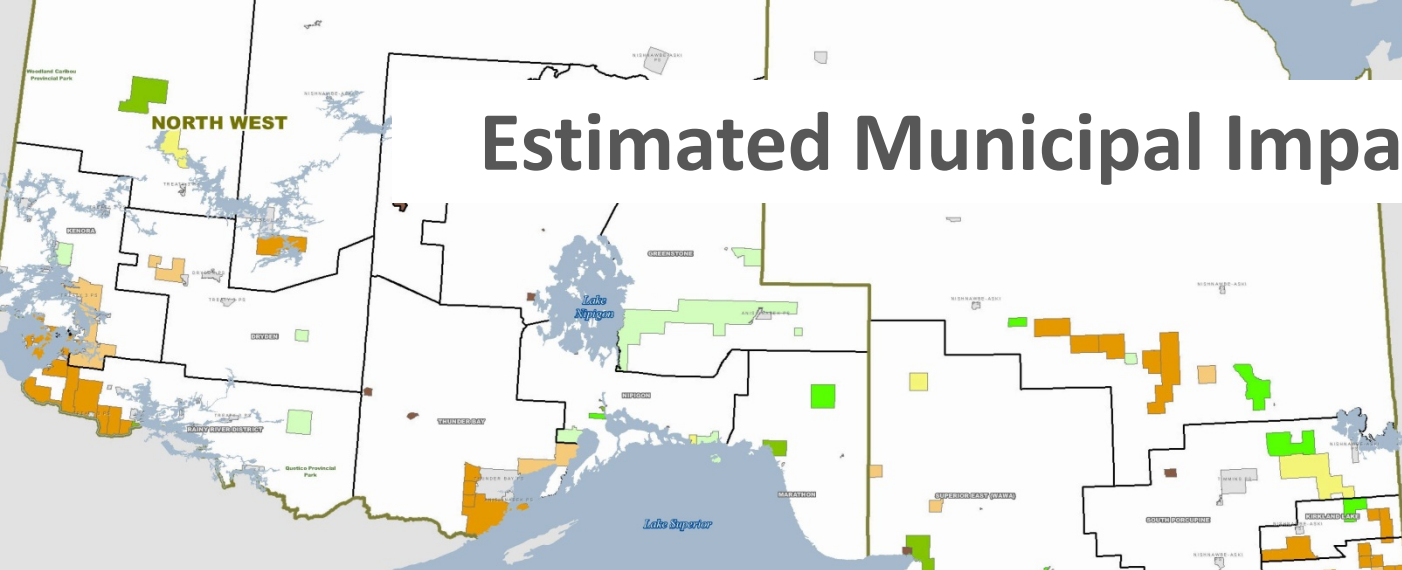
Phase-in Strategy

Municipality with a bill increase (estimated increase \$40)

Municipality with a bill decrease (estimated decrease \$18, \$39, \$51, \$81,

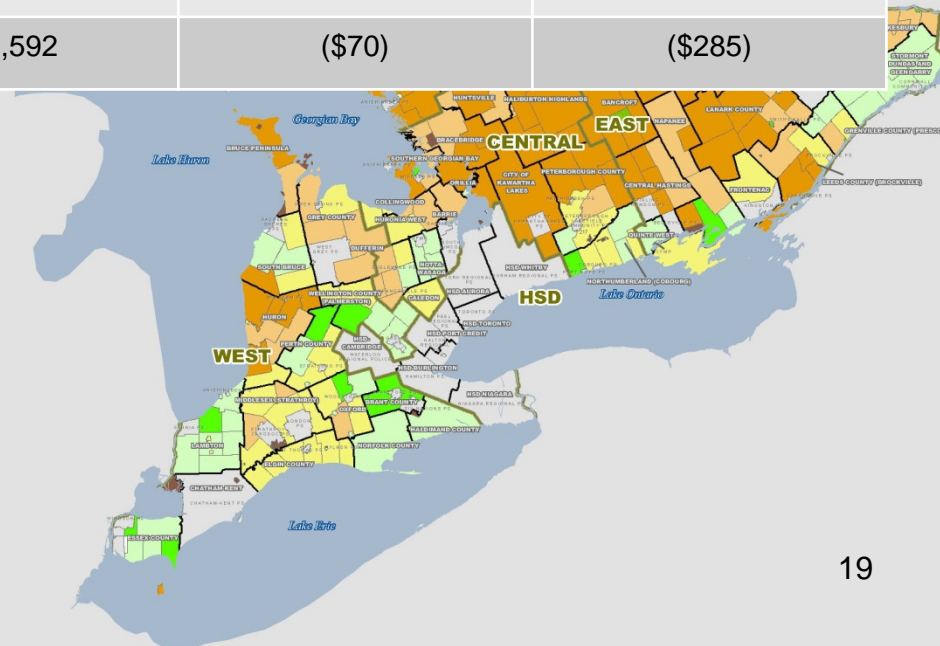


Estimated Municipal Impact

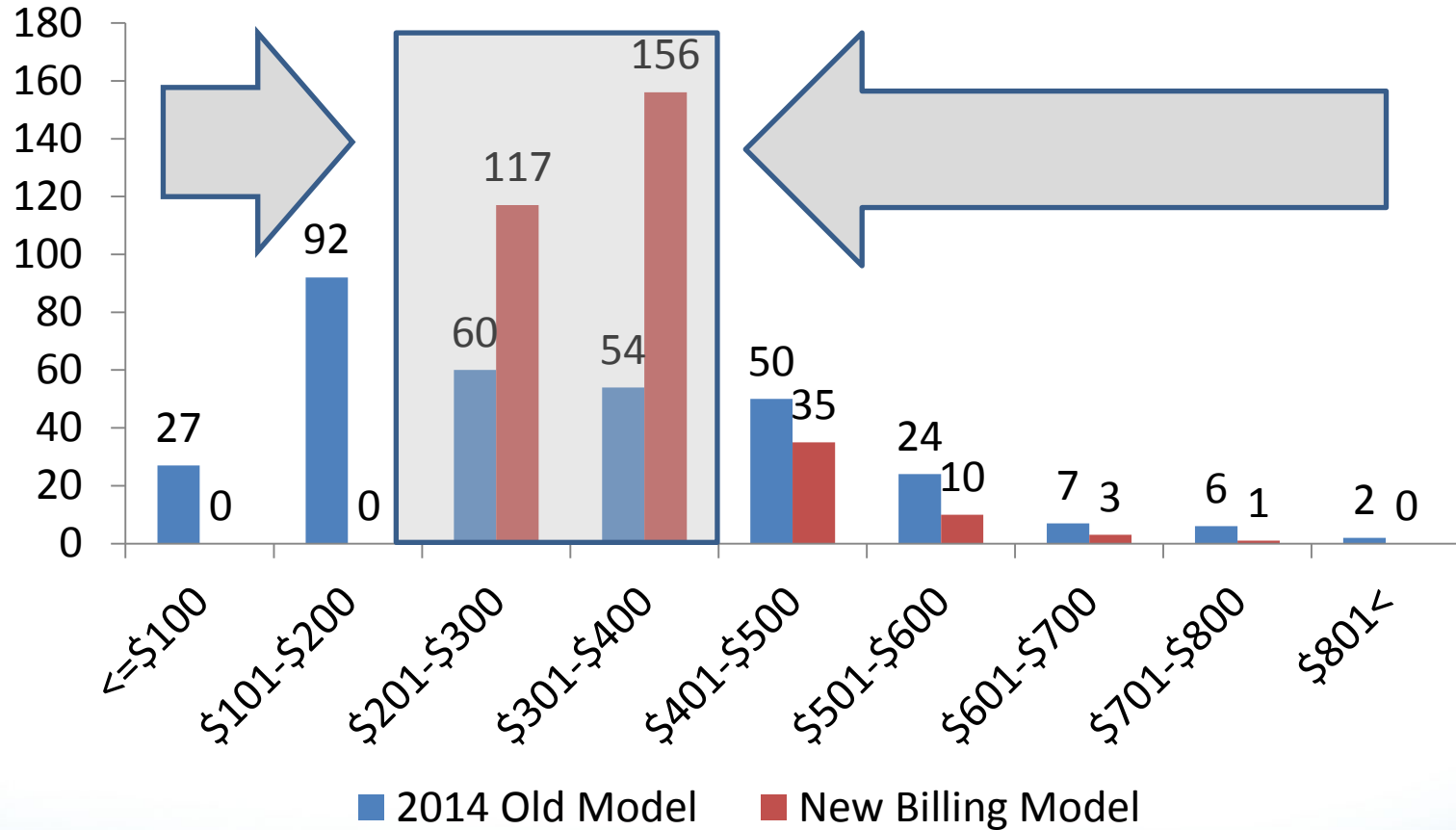


Impact of New Billing Model (2014 Current vs. New Billing Model, Full Phase-In)

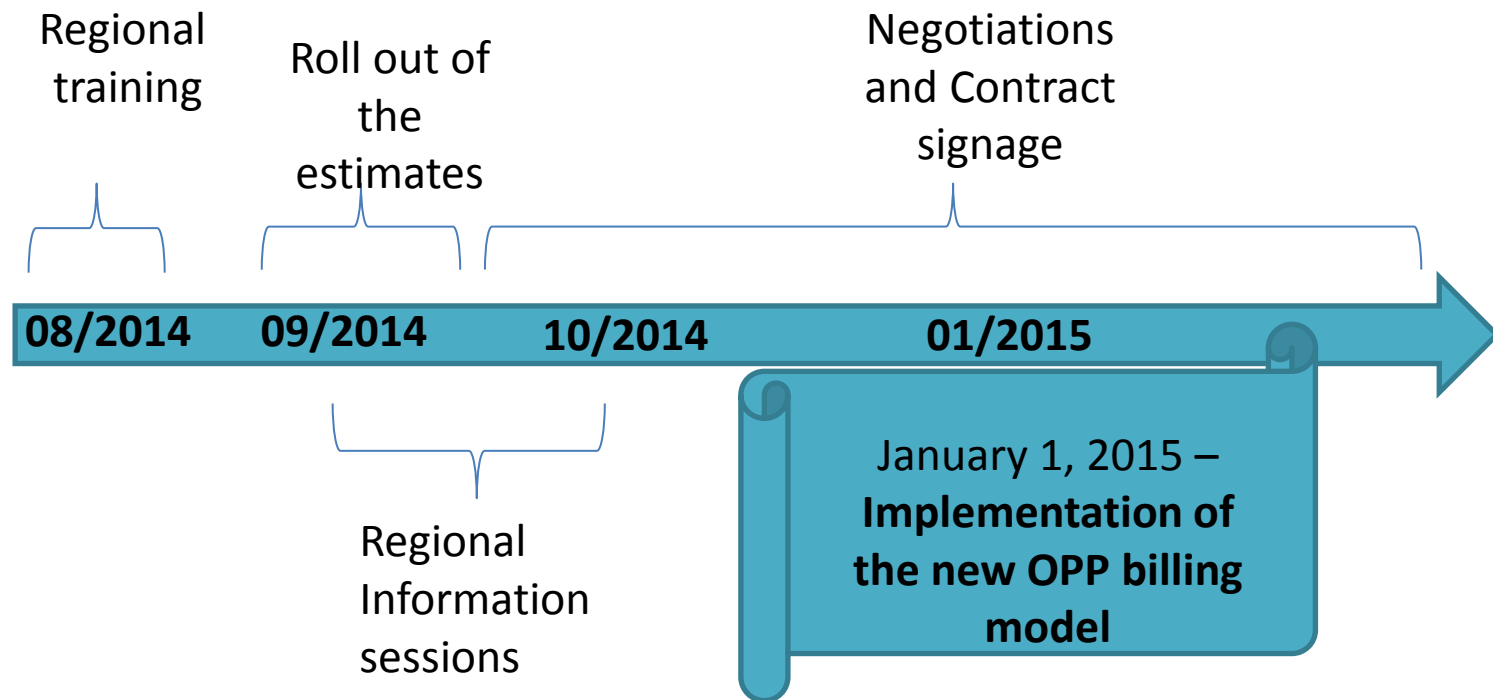
	Municipalities	Properties	Avg Change (\$/Property)	Max Change (\$/Property)
Bill Increases	207	586,899	\$83	\$207
Bill Decreases	115	540,592	(\$70)	(\$285)



Municipal Impact



Next Steps



Questions?



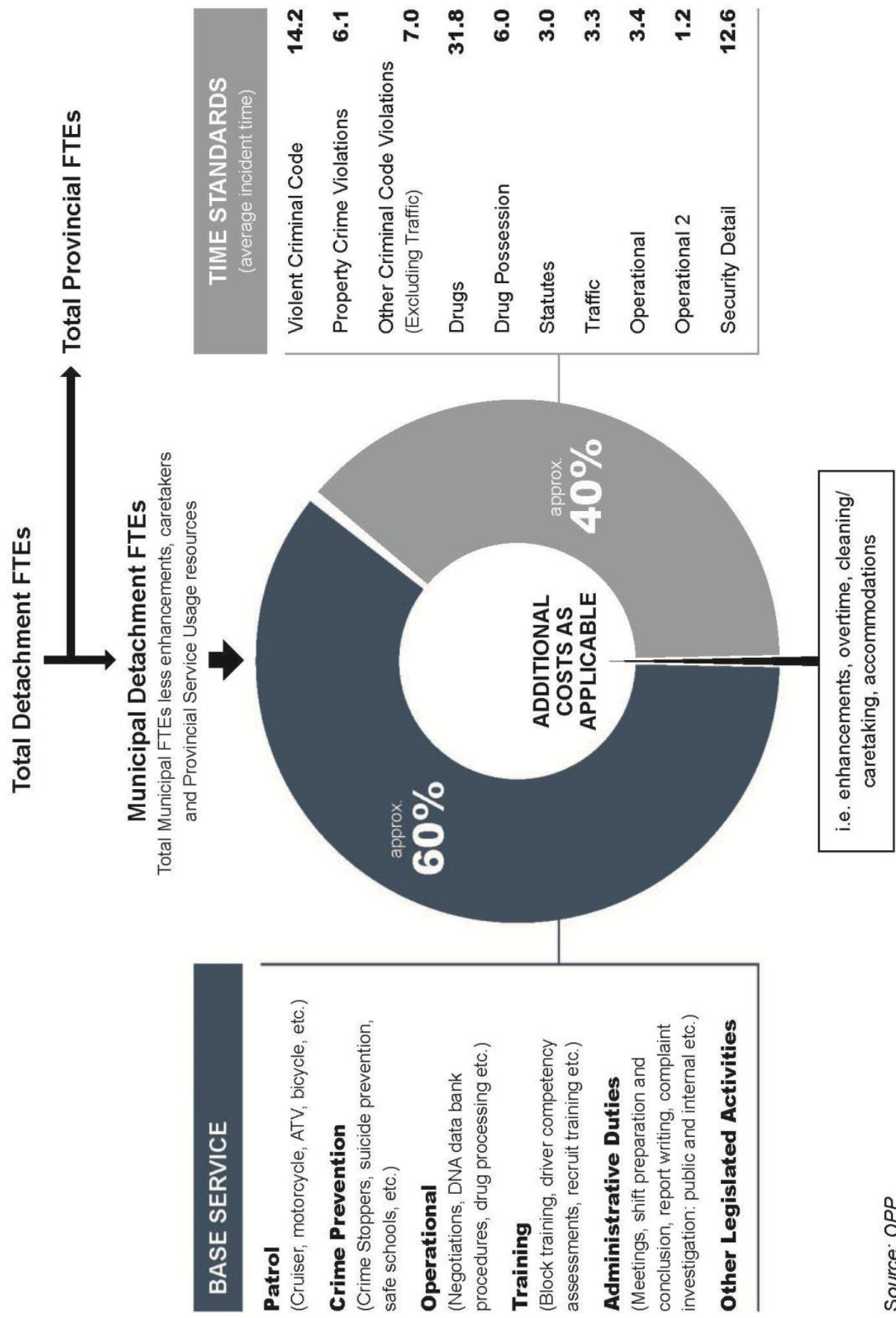


OPP Billing Model

- ❖ The Ontario Provincial Police (OPP) is committed to providing efficient, cost-effective policing excellence to the province and the municipalities it serves.
- ❖ The Ministry of Community Safety and Correctional Services MCSCS and the OPP, in consultation with municipal partners developed a simpler, fairer, more transparent billing model. The model will be implemented commencing January 1, 2015.
- ❖ Under the new model the bills will be split between base costs and calls for service on an approximate 60/40 split. All municipalities will pay the same cost per property (household and business property) for base services, including proactive policing and legislated activities. In addition, municipalities will incur costs for reactive policing, which will be assessed depending on the number and nature of their respective "Calls for Service."
- ❖ Base costs include services such as routine patrols, crime prevention, RIDE programs and infrastructure. Billing for base costs ensures that everyone contributes equally towards the cost of having well-equipped, professional, highly-trained front-line members ready to answer calls for service.
- ❖ A Call for Service is a request for police assistance which usually involves the attendance of an officer -- or officers -- at the scene of an occurrence (e.g. Criminal Code violations or motor vehicle collisions). The charge for reactive Calls for Service will be variable for each municipality because it will be calculated annually, based on the municipality's individual usage levels
- ❖ The new model will be phased-in over five years and will be revenue neutral for the Province. The phased-in implementation strategy will give municipalities time to adjust to any increases in their policing costs.
- ❖ We are committed to continue working with our municipal partners to support community safety, including police service delivery that is fiscally responsible, transparent and sustainable for the people of Ontario now and into the future.

Please refer to our website at <http://www.opp.ca> for AMO Conference materials.

Ontario Provincial Police (OPP): New Billing Model



Source: OPP
Based on 2013 actual expenditures



**Ontario Provincial Police
County of Wellington Detachment**

Inspector Scott Lawson

**Report for the
County of Wellington Police Services Board**

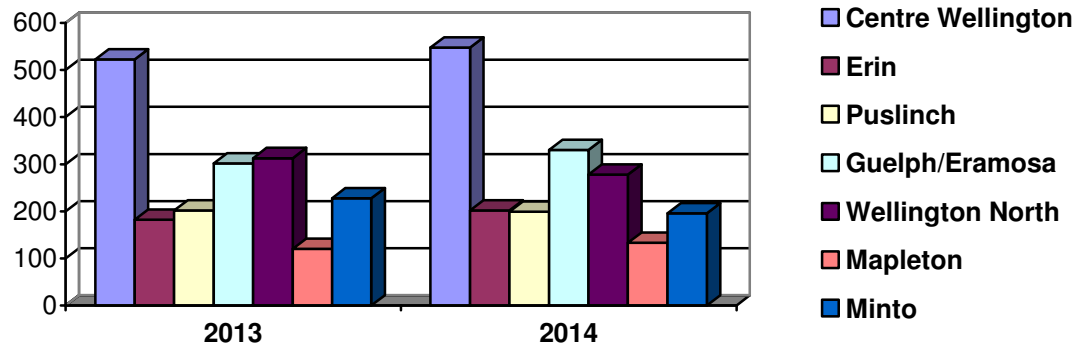
July 2014

This report covers the period from June 1st, 2014 to June 30th, 2014



Calls for Service

**Calls for Service June 2013
vs June 2014**



Calls For Service

Municipality	2008	2009	2010	2011	2012	2013	2014 YTD
Centre Wellington	6,236	6,240	6,214	5,996	6,449	5,961	2,849
Town of Erin	2,079	2,110	2,152	2,156	2,322	2,167	949
Puslinch Township	1,987	1,900	1,836	2,157	2,404	2,178	1,062
Guelph/Eramosa	3,035	3,214	3,224	3,615	3,272	3,397	1,704
Wellington North	3,313	3,295	3,172	3,169	3,136	3,337	1,497
Township of Mapleton	1,250	1,209	1,252	1,320	1,322	1,349	667
Town of Minto	2,546	2,352	2,322	2,384	2,725	2,524	1,090
Provincial	2140	1997	2,378	2,392	2,694	3,214	1,291
Totals	22,586	22,317	22,550	23,189	24,324	24,127	11,109

Victim Services Wellington

2014 Year to Date Calls for Assistance County of Wellington OPP	Previous Year Totals	
43	2011	105
	2012	122
	2013	100

911 Calls

2014 YTD	960
2011	2,340
2012	2,683
2013	2,520

Ontario Sex Offender Registry

2014 Year to Date OSOR Registrations	Previous Year Totals	
33	2011	67
	2012	69
	2013	70

False Alarms

2014 YTD	416
2011	946
2012	911
2013	961

*This is NOT the number of sex offenders residing in Wellington County



Crime

Crimes Against Persons	2013 YTD	2014 YTD
Homicide	0	0
Sexual Assault	45	23
Robbery	0	3
Assault	150	110

Other Crime	2013 YTD	2014 YTD
Fraud Investigations	144	90
Drug Investigations	208	186

Crimes Against Property	2013 YTD	2014 YTD
Break & Enter	152	91
Auto Theft	33	50
Theft	442	347
Mischief	247	178

Other Investigations	2013 YTD	2014 YTD
Domestic Disputes	252	179
Missing Persons	36	37

Crime Breakdown	North Wellington	Centre Wellington	South Wellington
Homicide	0	0	0
Sexual Assault	4	0	0
Robbery	0	0	0
Assault	7	5	7
Break & Enter	13	6	0
Auto Theft	3	2	3
Theft	33	26	22
Mischief	27	12	9
Fraud Investigations	4	5	4
Drug Investigations	16	5	8
Domestic Disputes	8	20	17
Missing Persons	3	4	2



Traffic

Enforcement

Traffic	YTD
Speeding	3,917
Seatbelt Offences	188
Careless Driving	121
Drive Under Suspended	128
Distracted Driver Offences	188
Other Moving Violations	156
Equipment and Other HTA	1,288
No Insurance - CAIA	50
Other Provincial Acts	YTD
Liquor Licence Act	173
Trespass to Property Act	138
Other CAIA	33
Other Provincial Acts	70
By-Law Offences	YTD
By-Law Offences (General)	636
Taxi By-Law	0
County of Wellington OPP Year To Date Total	6,758
West Region Traffic Unit Year To Date Total	338
YTD Total Traffic	6,046
YTD Total Other Provincial	414
YTD Total By-Law	636
2014 Year to Date POA Charges	7,096
2013 Year to Date POA Charges	9,137

Drinking and Driving

Impaired Driving	2013 YTD	2014 YTD
R.I.D.E. Vehicle Stops	31,895	18,681
Roadside Alcotests	351	327
Warn Suspensions	97	112
ADLS Suspensions	54	97
Persons Charged	55	90

Racing

YTD HTA Sec. 172 Impoundements	Previous Year Totals	
49	2011	80
	2012	82
	2013	93

Parking Enforcement

Municipality	2013 YTD	2014 YTD
Centre Wellington	306	450
Erin	12	7
Puslinch	205	84
Guelph / Eramosa	249	143
Wellington North	32	13
Mapleton	16	9
Minto	10	11
County / Other	0	0
Parking Totals	830	717



Traffic

Suspect Apprehension Pursuits

2014 YTD Pursuits / Fail to Stop for Police	Previous Year Totals	
1	2011	11
	2012	17
	2013	8

Traffic Initiatives

R.I.D.E

The Wellington County Traffic Unit conducted a total of 33 R.I.D.E initiatives across the County checking 2,445 vehicles. So far this year, the Traffic unit has laid 78 drinking and driving charges many of them stemming directly from R.I.D.E initiatives.

Marine

Although July 1st fell on a Tuesday this year, effectively breaking up the long weekend, the Wellington County Traffic Unit took to the water on Bellwood Lake to ensure those who did partake in the weekend festivities were doing so in a safe and secure manner. On June 28th the Marine Unit checked 55 vessels giving out 5 minor warnings and executed a canoe rescue.

Stolen Vehicle Recovery

On June 25, 2014 at around 6:00 p.m. members of the Wellington County Traffic Management Unit attended a rural property in Minto Township on All Terrain Vehicles in response to information received on the whereabouts of a stolen John Deere tractor.

Officers attended the location and located a John Deere loader tractor as well as a 2011 Ford F-150 pick-up truck. The tractor was almost completely submerged in the marsh and the truck was stuck in the mud. Heavy equipment was required to remove both vehicles.



Traffic

Motor Vehicle Collisions

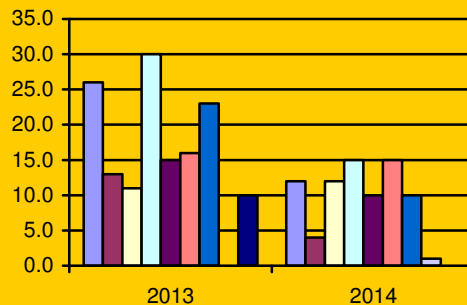
Month	Victims			Collisions								
	Total Victims	Persons Killed	Persons Injured	Total MVC	Fatal	PI	PD	Alcohol Involved			CMV	SMV
								Yes	No	Unk		
JAN	9	1	8	212	1	6	205	7	188	17	19	87
FEB	1	0	1	219	0	1	218	0	210	9	22	60
MAR	10	2	8	152	2	2	148	1	146	5	7	76
APR	22	0	22	122	0	10	112	3	98	21	4	60
MAY	40	1	39	116	1	24	91	3	98	15	6	49
JUN	29	0	29	118	0	18	100	5	97	16	11	50
JUL												
AUG												
SEP												
OCT												
NOV												
DEC												
TOTAL	111	4	107	939	4	61	874	19	837	83	69	382

Yearly Collision Summary

Collision Type / Characteristic	2008	2009	2010	2011	2012	2013	2014 YTD
Total Reportable MVC	2,027	1,918	1,813	1,976	1,875	2,095	939
Property Damage MVC	1,733	1,694	1,525	1,649	1,565	1,761	874
Personal Injury MVC	281	213	282	320	302	326	61
Fatal MVC	13	11	6	7	8	8	4
Persons Killed	13	11	6	7	9	9	4
Persons Injured	384	314	425	463	442	481	107
Alcohol Involved	61	76	42	57	63	37	19
Total MVC	2,027	1,918	1,813	1,976	1,875	2,095	939

Car vs Deer Collisions

Municipality	2013 YTD	2014 YTD
Centre Wellington	26	12
Erin	13	4
Puslinch	11	12
Guelph / Eramosa	30	15
Wellington North	15	10
Mapleton	16	15
Minto	23	10
City of Guelph	0	1
Provincial Highways	10	0
Total Collisions	144	79





Youth Crime

School Resource Officer Program

School statistics are now being reported by school year (September – June)

Student Population		2009-10	2010-11	2011-12	2012-13	2013-14
CWDHS	Centre Wellington DHS	1466	1398	1398	1493	1285
EHS	Erin High School	578	578	578	610	630
NDSS	Norwell DSS	775	716	716	751	646
WHSS	Wellington Heights SS	686	661	661	683	620

2013 – 2014 Secondary School Criminal Incidents (Sep – Jun)

Incident Type	CWDHS	EDHS	NDSS	WHSS	YTD Total
Assault	5	6	12	15	38
Mischief	5	9	17	4	35
Threats	9	13	21	13	56
Theft	11	8	10	11	40
Other Criminal	1	1	3	14	19
Drugs	12	9	10	21	52
Total	43	46	73	78	240

2013 – 2014 Secondary School Provincial Offences Act Incidents (Sep – Jun)

Incident Type	CWDHS	EDHS	NDSS	WHSS	YTD Total
Highway Traffic Act	10	0	17	8	35
Liquor Licence Act	0	0	0	0	0
Trespass to Property	3	5	6	12	26
Other	2	1	3	4	10
Total	15	6	26	24	71

Meetings / Presentations

Centre Wellington DHS

- No notable meetings/presentations

Erin DHS

- No notable meetings/presentations

Norwell DSS

- PC CLEMENTS will be returning to platoon at the end of the school year and Norwell DSS presented him with a plaque at the year-end assembly

Wellington Heights SS

- PC WATT attended fitness classes for year-end fitness testing and participated in rock climbing sessions
- PC WATT co-ordinated a presentation by the Forensic Identification Unit for the Law class



- PC Watt followed up with CAS and Community Groups regarding a pregnant female student

Notable School Related Incidents and Events

Centre Wellington DHS

- No notable incidents/events

Erin DHS

- No notable incidents/events

Norwell DSS

- PC CLEMENTS was involved in two level one threat assessments at Palmerston Public School
- PC Clements assisted the Street Crime Unit with the arrest and transportation of two parties charged with drug offences

Wellington Heights SS

- A male student was assaulted by another male student. The assault was instigated by another female student. On discussion with school officials the accused was sent to diversion and the female student was given a warning
- Follow-up was conducted with John Howard Society concerning a female student who was diverted for sending and receiving inappropriate pictures on a cell phone
- Two incidents of bullying. All involved students were warned and reminded of the zero tolerance policy. All students advised that suspensions would be handed out if bullying continues



Canine Unit

2014 Calls for Service and Hours

Occurrence Type	Initial (Calls)	Initial (Hours)	Assist (Calls)	Assist (Hours)	YTD (Calls)	YTD (Hours)
Occurrence Totals (OPP)	31	149.00	3	21.00	34	170.00
Occurrence Totals (Other)	0	0.00	0	0.00	0	0.00
Occurrence Totals (Combined)	31	149.00	3	21.00	34	170.00

Canine Handler: Provincial Constable Barry REID

Notable Incidents and Events

Date: June 4, 2014

Location: Maplehurst Detention Centre

Canine Unit was requested to assist Corrections with search of facility. Attended and assisted CO NEWHOOK with search of admitting, discharge and Laundry areas

Date: June 8, 2014

Location: Grey County

Grey County OPP responded to a report that a male party had threatened to harm his ex-wife and himself. Canine Unit was requested to assist with the search for the suspect but was called off prior to arrival as the suspect was located and apprehended

Date: June 9, 2014

Location: Amabel-Sauble Community School

Canine Unit presentation and demonstration for public school, grades K-4

Date: June 11, 2014

Location: Hamilton –Wentworth Detention Centre

Hamilton –Wentworth Detention Centre requested OPP Canine Unit assistance with a drug search. Canine attended with CO NEWHOOK and searched the laundry area. Nothing was located

Date: June 12, 2014

Location: Wellington County

The Canine Unit attended a media interview with Wellington Advertiser. On completion of the interview the Canine Unit conducted general patrol duties due to ongoing issues with daytime break and enters, Canine Unit conducted deterrent patrols of the area

Date: June 14, 2014

Location: Cape Croker First Nations

Cape Croker First Nations Police requested assistance with searching for suicidal male missing from residence. Prior to arrival, the subject was located at another residence

Date: June 20, 2014

Location: Wellington County - Teviotdale

Canine Unit demonstration at the Grand Opening ceremony for the new North Wellington Operations Centre



**County of Wellington OPP
Report for the Police Services Board**

Date: June 22, 2014

Location: Guelph Lake Conservation Area

Canine Unit demonstration at community event at Guelph Lake Conservation Area

Date: June 24, 2014

Location: Harriston

Canine Unit requested to assist ERT with the execution of a CDSA warrant. Canine covered exits from the apartment during ERT entry. Officers arrested 3 occupants without incident

Wellington Crime Unit requested canine search the residence under authority of CDSA warrant. The residence had already been searched by hand with a quantity of illegal substances being seized. No further items were located

Date: June 24, 2014

Location: Fergus

While on patrol officers observed two suspicious vehicles parked in the rear lot of a closed KFC. As officers pulled in the vehicles attempted to leave, but were stopped by police. Based on previously obtained information the officers had reasonable & probable grounds to arrest both occupants of the vehicles for possession of controlled substance. Canine Unit was dispatched to assist. Upon arrival, it was learned that a second vehicle in the parking lot was also involved in the incident, but the owner had walked away from the scene when police had arrived earlier. The windows of the vehicle were down and Investigator searched and located a large amount of marihuana under the seat. Jag searched the vehicle and then was used to search the grass area where the third suspect had walked. Nothing further was located

Date: June 26, 2014

Location: Harriston

The Crime Unit requested assistance from the Canine Unit to follow up on an armed robbery which occurred in Harriston on May 3rd. A Crime Stoppers tip was received indicating that a known male party was involved and that he was hiding the involved firearm in a shack. Canine/ERT/Crime attended that area and located a tarp/wood structure along the riverbank. Jag was used to search the structure and surrounding area. Nothing was located



Auxiliary Unit

Coordinator: Provincial Constable John PEPPLER

Unit Commander: Auxiliary S/Sgt. B. MC GIMSIE

Notable Incidents and Events

Auxiliary Staff Sergeant MC GIMSIE reports that requests for Marine patrol are starting to come in as the summer months are fast approaching. He also reports that a large number of requests are still being received requesting Auxiliary members for community events.

Unit Activity – June 2014

- Torch Run for Special Olympics
- Mt. Forest Home Hardware Backyard BBQ – Rollover Simulator
- Fergus Optimist Club Bike Rodeo
- Wellington County Property Auction
- Child Car Seat Clinics
- Grand Opening of North Wellington Operations Centre
- SafeGuard audits
- Tim Horton's Camp Day
- Assist with Firearms Training at IST
- Commissioner's Own Pipes and Drums – CFB Borden, Collingwood Cadet Inspection, Machar Township 123th Anniversary
- Monthly meeting – Drug Identification and Awareness
- Swim Test for marine patrol certification

Media

Provincial Constable Bob BORTOLATO & Provincial Constable Cheri ROCKEFELLER

Notable Incidents and Events

- During the month of June the Media Unit issued 50 media releases bringing the year-to-date total to 277 media releases
- Throughout the month of June students from James McQueen Public School attended Centre Wellington Detachment in groups of 20 along with their parents & teachers for a guided tour of the facility, tours were conducted by PC Dan MACDONALD. In total four tours took place comprising of more than 100 students, parents & teachers. A fifth tour was also held at Centre Wellington Detachment in June for a retired Staff Sergeant and his grandson, the tour was also conducted by PC MACDONALD.
- On June 23rd the Guelph Lake 'Party in the Park' event took place. Wellington County OPP attended and performed demonstrations for those in attendance.



OPP K.I.D.S Program / D.A.R.E

Coordinator: Provincial Constable Kelly KRPAN

Meetings / Presentations:

- OPP KIDS Program officially completed for the 2013/2014 school year. All teachers and students provided positive encouraging feedback on the program and agreed that the program is a step in the right direction for educating our children on today's top issues.

- June 2, 2014 a bullying and safe words presentation at St. Ignatious Wellington Hall Academy, Eramosa for the entire school Kindergarten to Grade 8.

- June 6th, 2014 a road safety and bicycle safety presentation at Middlebrook Mennonite school in Elora. The entire school participated.

- PC Krpan attended annual block training from June 9th – June 12th.

- June 16th, 2014 a presentation on gang related activities and awareness was presented to grade 8 students at Erin Public School.

- June 17th, 2014 presentation on on-line safety and awareness was presented to grade 7 and 8 students at St. John Brebeuf Catholic School in Erin.

- June 18th, 2014 OPP KIDS graduation day for grade 6 students at Minto-Clifford Public School in Harriston

- June 19th, 2014 OPP KIDS graduation day for grade 6 students at Ross R. McKay Public School in Hillsburgh. Erin Optimists attended and handed out T-shirts and snacks, all of which they purchased for the students.

- June 19, 2014 PC Krpan was invited as a special guest for grade 8 graduation at St. John Brebeuf Catholic School in Erin for the church ceremony, presentations and dinner.

- June 20th, 2014 OPP KIDS graduation day for grade 6 students at Elora Public School. The 60 students in total, teachers and some volunteer parents attended Fergus detachment for a tour and further for the presentations and games in the board room.

- June 20th, 2014 OPP KIDS graduation day for grade 6 students at J.D. Hogarth Public School in Fergus.



**County of Wellington OPP
Report for the Police Services Board**

- June 23rd, 2014 a second presentation for grade 7 students at St. John Brebeuf Catholic School on on-line safety and awareness.
- June 23rd, 2014 OPP KIDS graduation day for grade 6 students at Brisbane Public School in Erin. Erin Optimists attended and handed out T-shirts and snacks, all of which they purchased for the students.
- June 24th, 2014 three presentations presented to three grade 7 and 8 classes at St. John Brebeuf Catholic School in Erin on Drugs and Alcohol Safety and Awareness.
- June 25th, 2014 OPP KIDS graduation for grade 6 students at St. John Brebeuf Catholic in Erin. Erin Optimist members also present for awards.
- June 25th, 2014 OPP KIDS graduation for grade 6 students at Erin Public School in Erin. Erin Optimist members present for awards.



Administration

Revenue

Year	County	Provincial	Total
2009	\$73,307.32	\$9,552.04	\$82,859.36
2010	\$87,122.04	\$7,899.10	\$95,012.14
2011	\$81,274.66	\$9,233.56	\$90,508.22
2012	\$75,836.60	\$5,043.55	\$80,880.15
2013	\$70,202.29	\$5,373.66	\$75,575.95
2014	\$42,208.23	\$3,844.95	\$46,053.18

Paid Duties

Year	Paid Duties	Officers	Hours	Admin Fees
2010	165	298	1,648.50	\$3,075.00
2011	207	446	2,455.25	\$5,325.00
2012	165	312	1,890.75	\$2,775.00
2013	227	469	3300.00	\$1,575.00
2014	86	148	932	\$375.00

Personnel

Secondary Employment

Secondary Employment is any business, undertaking or calling that involves financial gain in which an employee participates while not on duty, including political activity.

Complaints

Complaint Type by Status	2009	2010	2011	2012	2013	2014
Complaints Received	19	13	16	16	12	9
Complaints Resolved	10	8	8	5	0	2
Complaints Unfounded	6	2	6	8	5	3
Complaints Withdrawn	2	3	1	2	4	1
Complaints Ongoing	1	0	1	1	3	3

No	Complaint Type	Status	No	Complaint Type	Status
1	Public	Closed	7	Public	Ongoing
2	Public	Closed	8	Internal	Ongoing
3	Public	Closed	9	Public	Closed
4	Public	Closed			
5	Public	Closed			
6	Public	Ongoing			

Internal Complaint is an allegation by someone who is not a member of the public concerning the policy, services, local policies of a contract location, or the conduct of an employee or volunteer of the OPP and includes a WDHP allegation, and/or an allegation of workplace violence.

Public Complaint is a complaint by a member of the public concerning the policy, services, local policies of a contract location, or the conduct of an employee of the OPP.



Personnel

Acknowledgements

Date	Member(s)	Particulars
27Jun14	PC R. WATT	From the desk of the Commissioner, PC WATT was nominated for the Ontario Association of Chiefs of Police youth Committee's School Resource Officer - Award of Excellence. She is to be commended for her hard work in developing, delivering and supporting programs for students in the communities schools

Notable Events

Noteworthy Information and Events

2014 Special Olympics Torch Run

On June 4th Ontario Provincial Police Wellington County took part in the 2014 Torch Run. The event kicked off at the Marden Sports Complex and ran along Highway 6 southbound towards Guelph. Once participants reached Woodlawn Road in Guelph the torch was passed on to the Guelph Police Service who continued the run through the City of Guelph. The event saw 45 participants and went a long way to raise Special Olympics awareness.

In the end close to \$800.00 was raised for the Special Olympics.





Mental Health Round Table

On June 10, 2014 Wellington County Ontario Provincial Police (OPP) hosted a community stakeholder's roundtable to discuss the mental health challenges facing our community today and in the future. Members of the Wellington County OPP were joined by representatives from many stakeholders; Guelph Police Service, Community Mental Health Association, Homewood, Waterloo Wellington Local Health Integration Network (LHIN), Probation and Parole, Family Counselling and Support, Guelph-Wellington Emergency Medical Services, Groves Memorial Hospital, North Wellington Health Care, Guelph General Hospital, Wellington County, Police Services Board, Wellington North Fire Services, the Mount Forest Family Health Team and members of the Waterloo Wellington Local Health Integration Network (LHIN).

Wellington County OPP, like most police services, has generally seen calls-for-service with a mental health component increase over the previous 5 years by an average of 6%. It is expected that there will be a 5% increase this year with a further projected increase of 9% in 2015. Police are often the first point of contact with individuals who are in a mental health crisis regardless of the cause. Many of these calls-for-services are handled in conjunction with community partners however statistics show Wellington County OPP's response to a mental health call averages 6 hours of officer time from first response to report completion. *"In these situations there are often multiple issues at play so a multi-jurisdictional collaborative approach to dealing with vulnerable people in conflict with the law makes sense"* says Scott Lawson, Wellington County OPP Detachment Commander. *"As a community we have to continually come together and review our overall response to mental health calls with a mind to working together to reduce the increasing pressure on all our resources"* Lawson said. *"As one of the safest communities in the country our police service goal is to be the call of last resort when dealing with a mental health crisis. Collectively I know we can find ways to accomplish that"* he added.

In an ongoing effort to support our partners, while looking at innovative, proactive and collaborative approaches to reduce police response, Wellington County OPP invited Sherri Metivier (RN) and OPP Constable Byron Hornick of the Essex County Mental Health Response Unit (MHRU) to understand their issues, processes, collaboration, best practices and significant successes realized by taking a proactive approach to addressing mental health in their community. The goal of the Essex County MHRU is to address efficiencies in both costs and resource allocation to effectively respond to complex mental health calls-for-service.

After a day of dialogue and presentations the response from all partners involved was overwhelmingly positive and as a result further discussions will take place regarding how Wellington County and all its stakeholders can further address the growing need for a collaborative, proactive approach to mental health issues in the community.



Grand Opening – North Wellington Operations Centre

On June 20th, 2014 Wellington County OPP held the Grand Opening of the North Wellington Operations Centre located in Teviotdale. The event was attended by approximately 300 people; notable guests included MPP Randy PETTIPIECE and Deputy Commissioner Scott TODD.

The event started at 11:00am with Master of Ceremonies, Chair, Russ SPICER, Police Service Board kicking off the grand opening ceremonies followed by the singing of O'Canada by the Grade 5 class from St. Mary's Catholic School in Mount Forest.

Opening remarks were followed by an assortment of speakers from across Wellington County, West Region Command, the Provincial Government and private business. Force Chaplain, Gerry MCMILLIAN, concluded the speeches with a blessing.

Immediately following speeches, the ribbon cutting and reception were held along with tours of the North Wellington Operation centre for everyone in attendance. At approximately 12:15pm the event concluded with a Canine demonstration that included PC Barry REID, Jag & Knox.

Below is an assortment of pictures from the event.



OPP color guard and dignitaries marching to the opening ceremonies. The main entrance to the North Wellington Operations Centre can be seen behind them.



(left to right) Inspector Scott LAWSON, Deputy Commissioner Scott TOD & Chief Superintendent John CAIN



Members of the public watching the Wellington County Canine Unit demonstration at the Grand Opening ceremonies



**Ontario Provincial Police
County of Wellington Detachment**

Inspector Scott Lawson

**Report for the
County of Wellington Police Services Board**

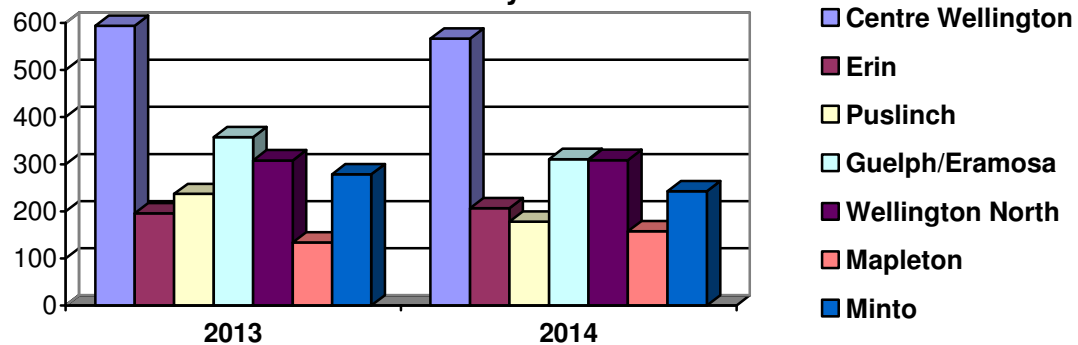
August 2014

This report covers the period from July 1st, 2014 to July 31st, 2014



Calls for Service

**Calls for Service July 2013
vs July 2014**



Calls For Service

Municipality	2008	2009	2010	2011	2012	2013	2014 YTD
Centre Wellington	6,236	6,240	6,214	5,996	6,449	5,961	3,416
Town of Erin	2,079	2,110	2,152	2,156	2,322	2,167	1,156
Puslinch Township	1,987	1,900	1,836	2,157	2,404	2,178	1,240
Guelph/Eramosa	3,035	3,214	3,224	3,615	3,272	3,397	2,015
Wellington North	3,313	3,295	3,172	3,169	3,136	3,337	1,806
Township of Mapleton	1,250	1,209	1,252	1,320	1,322	1,349	825
Town of Minto	2,546	2,352	2,322	2,384	2,725	2,524	1,333
Provincial	2140	1997	2,378	2,392	2,694	3,214	1,509
Totals	22,586	22,317	22,550	23,189	24,324	24,127	13,300

Victim Services Wellington

2014 Year to Date Calls for Assistance County of Wellington OPP	Previous Year Totals	
56	2011	105
	2012	122
	2013	100

911 Calls

2014 YTD	1,189
2011	2,340
2012	2,683
2013	2,520

Ontario Sex Offender Registry

2014 Year to Date OSOR Registrations	Previous Year Totals	
37	2011	67
	2012	69
	2013	70

False Alarms

2014 YTD	492
2011	946
2012	911
2013	961

*This is NOT the number of sex offenders residing in Wellington County



Crime

Crimes Against Persons	2013 YTD	2014 YTD
Homicide	0	0
Sexual Assault	55	27
Robbery	0	3
Assault	176	126

Other Crime	2013 YTD	2014 YTD
Fraud Investigations	173	114
Drug Investigations	241	230

Crimes Against Property	2013 YTD	2014 YTD
Break & Enter	181	115
Auto Theft	42	59
Theft	527	452
Mischief	285	241

Other Investigations	2013 YTD	2014 YTD
Domestic Disputes	310	204
Missing Persons	42	42

Crime Breakdown	North Wellington	Centre Wellington	South Wellington
Homicide	0	0	1
Sexual Assault	2	1	1
Robbery	0	0	0
Assault	5	8	3
Break & Enter	10	7	7
Auto Theft	3	0	4
Theft	34	38	33
Mischief	14	14	33
Fraud Investigations	7	2	14
Drug Investigations	18	9	11
Domestic Disputes	7	9	9
Missing Persons	4	0	1



Traffic

Enforcement

Traffic	YTD
Speeding	4,833
Seatbelt Offences	220
Careless Driving	142
Drive Under Suspended	157
Distracted Driver Offences	239
Other Moving Violations	189
Equipment and Other HTA	1,503
No Insurance - CAIA	70
Other Provincial Acts	YTD
Liquor Licence Act	249
Trespass to Property Act	161
Other CAIA	44
Other Provincial Acts	89
By-Law Offences	YTD
By-Law Offences (General)	681
Taxi By-Law	0
County of Wellington OPP Year To Date Total	8,203
West Region Traffic Unit Year To Date Total	374
YTD Total Traffic	7,353
YTD Total Other Provincial	543
YTD Total By-Law	681
2014 Year to Date POA Charges	8,577
2013 Year to Date POA Charges	10,585

Drinking and Driving

Impaired Driving	2013 YTD	2014 YTD
R.I.D.E. Vehicle Stops	37,281	21,098
Roadside Alcotests	418	368
Warn Suspensions	113	132
ADLS Suspensions	73	117
Persons Charged	77	111

Racing

YTD HTA Sec. 172 Impoundements	Previous Year Totals	
65	2011	80
	2012	82
	2013	93

Parking Enforcement

Municipality	2013 YTD	2014 YTD
Centre Wellington	311	453
Erin	12	7
Puslinch	226	92
Guelph / Eramosa	327	186
Wellington North	32	13
Mapleton	16	9
Minto	11	11
County / Other	0	0
Parking Totals	935	771



Traffic

Suspect Apprehension Pursuits

2014 YTD Pursuits / Fail to Stop for Police	Previous Year Totals	
1	2011	11
	2012	17
	2013	8

Traffic Initiatives

R.I.D.E

The Wellington County Traffic Unit conducted a total of 25 R.I.D.E initiatives across the County checking 2,417 vehicles.

Special Events

The month of July was busy for the Wellington County Traffic Unit. The Unit participated at the Fergus Truck show, the Hillside Festival and the Glen Allan Barnburner event. More information on some of these events can be found in the final section of this report *“Notable Events”*.

Automated Licence Plate Reader (ALPR cruiser)

Wellington County Detachment continues to strategically, effectively and successfully deploy the ALPR cruiser around the County to address identified problem (hotspot) locations. Highlights for July include 92 total hours of operation and multiple Highway Traffic Act charges issued. In addition, the initial stop led officers to 2 criminal drinking and driving charges, 31 roadside alcohol screening tests, 5 warn-range roadside licence suspensions, 2 drug related charges, 2 persons of interest and one additional criminal code arrest and charge. These additional “looking beyond the plate” offences are a direct result of proactive police intervention and investigation through the use of the ALPR car which identifies the overall successful deployment, training and use of this very valuable technology.

Marine Patrol

Throughout the month of July the Wellington County Traffic Unit conducted 51 hours of marine patrol. On July 26th & 27th the Marine Unit attended Guelph Lake to patrol the waterways within the area of the Hillside Festival. Officers stopped and search 70 vessels issuing 20 warnings, 4 life jacket charges, 1 Liquor Licence Act charge and two other minor violation tickets.

Bicycle Patrol

The Wellington County Traffic Unit conducted 14 hours of bicycle patrol during the month of July.



Traffic

Motor Vehicle Collisions

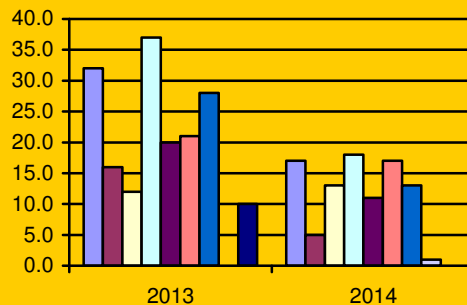
Month	Victims			Collisions								
	Total Victims	Persons Killed	Persons Injured	Total MVC	Fatal	PI	PD	Alcohol Involved			CMV	SMV
								Yes	No	Unk		
JAN	9	1	8	212	1	6	205	7	188	17	19	87
FEB	1	0	1	219	0	1	218	0	210	9	22	60
MAR	10	2	8	152	2	2	148	1	146	5	7	76
APR	22	0	22	122	0	10	112	3	98	21	4	60
MAY	40	1	39	116	1	24	91	3	98	15	6	49
JUN	29	0	29	118	0	18	100	5	97	16	11	50
JUL	29	1	28	88	1	16	71	2	74	12	7	36
AUG												
SEP												
OCT												
NOV												
DEC												
TOTAL	140	5	135	1027	5	77	945	21	911	95	76	418

Yearly Collision Summary

Collision Type / Characteristic	2008	2009	2010	2011	2012	2013	2014 YTD
Total Reportable MVC	2,027	1,918	1,813	1,976	1,875	2,095	1,027
Property Damage MVC	1,733	1,694	1,525	1,649	1,565	1,761	945
Personal Injury MVC	281	213	282	320	302	326	77
Fatal MVC	13	11	6	7	8	8	5
Persons Killed	13	11	6	7	9	9	5
Persons Injured	384	314	425	463	442	481	135
Alcohol Involved	61	76	42	57	63	37	21
Total MVC	2,027	1,918	1,813	1,976	1,875	2,095	1,027

Car vs Deer Collisions

Municipality	2013 YTD	2014 YTD
Centre Wellington	32	17
Erin	16	5
Puslinch	12	13
Guelph / Eramosa	37	18
Wellington North	20	11
Mapleton	21	17
Minto	28	13
City of Guelph	0	1
Provincial Highways	10	0
Total Collisions	176	95





Canine Unit

2014 Calls for Service and Hours

Occurrence Type	Initial (Calls)	Initial (Hours)	Assist (Calls)	Assist (Hours)	YTD (Calls)	YTD (Hours)
Occurrence Totals (OPP)	40	188.00	3	21.00	43	209.00
Occurrence Totals (Other)	1	6.00	0	0.00	1	6.00
Occurrence Totals (Combined)	41	194.00	3	21.00	44	215.00

Canine Handler: Provincial Constable Barry REID

Notable Incidents and Events

Date: July 2, 2014

Location: Wellington County

OPP received a report that an elderly male suffering from Alzheimer's disease had left his residence and tripping an alarm system. While enroute ERT members located the male party

Date: July 2, 2014

Location: Grey County

Grey County OPP responded to a domestic dispute, upon arrival the female suspect fled into the bush. Canine was dispatched to track the suspect, who was apprehended prior to arrival

Date: July 3, 2014

Location: Wellington County

Canine Unit requested to assist Crime/ERT in attempts to locate a suspect wanted for multiple violent offences. Suspect was not located during our involvement, relieved by PC PANHUIS

Date: July 7, 2014

Location: Hamilton-Wentworth Detention Centre

Corrections requested OPP Canine assistance with drug search. Canine attended Hamilton-Wentworth Detention Centre with CO NEWHOOK and PC HICK. Search of female ward unit 1B Right was stopped and cancelled due to a power outage

Date: July 7, 2014

Location: Puslinch Township

Canine conducted deterrent patrols of Puslinch Industrial Park and the car pool commuter lot due to ongoing vehicle theft occurrences

Date: July 9, 2014

Location: Saugeen Shores Police

Saugeen Shores Police Services requested OPP Canine for assistance with locating a suicidal female. The subject was last seen running from officers through a baseball diamond into a wooded ravine near a river. Canine was cancelled prior to arrival

Date: July 11, 2014

Location: Wellington County

Conducted deterrent patrols of Erin and Hillsburgh due to ongoing thefts from vehicles

Date: July 12, 2014

Location: Wellington County

Canine conducted deterrent patrols in the Town of Erin due to repeated theft from vehicles. Issued Liquor Licence Act warning and checked numerous pedestrians



County of Wellington OPP Report for the Police Services Board

Date: July 14, 2014

Location: Minora Park, Orangeville

Canine Unit presentation and demonstration at OSPCA summer youth camp

Date and Time: July 16, 2014

Location: Maplehurst Detention Centre

Canine Unit was requested to assist Corrections with search of facility. Canine attended Maplehurst Detention Centre with C.O. NEWHOOK and PC HICK. A searched of Units 1H, IF, and 1I located nothing

Date and Time: July 24, 2014

Location: Wellington County Mount Forest

Canine Unit requested to assist with execution of CDSA search warrant. PC REID and Knox covered the rear of the residence during entry by ERT. No one was present inside residence.

Canine Unit was requested to assist Wellington OPP Street Crime Unit with a drug search of the residence after a CDSA search warrant had been executed. Initial search located a grow operation in the basement. Jag was used to search the residence, no indications were given.

Auxiliary Unit

Coordinator: Provincial Constable John PEPPLER

Unit Commander: Auxiliary S/Sgt. B. MC GIMSIE

Notable Incidents and Events

Auxiliary Staff Sergeant MC GIMSIE reports that they were overwhelmed with requests for Marine Patrol during the month July, but the Unit was able to cover and provide effective Marine Patrol for each request.

Unit Activity – July 2014

- Marine patrols
- Dominion Day soapbox derby and parade in Elora
- Fergus Special Needs Soccer Festival
- Mount Forest Fireworks Festival
- Fergus Truck Show
- Highland Games



Media

Provincial Constable Bob BORTOLATO & Provincial Constable Cheri ROCKEFELLER

Notable Incidents and Events

- During the month of July the Media Unit issued 69 media releases bringing the year-to-date total to 346 media releases
- On July 3rd PC ROCKEFELLER, PC THOMAS, PC VANDYK, PC SCHWINDT, D/C PAUTSCH and Detachment Commander Inspector LAWSON attended the annual SIRENS for LIFE campaign hosted by Canadian Blood Services. The two month event is a friendly competition between emergency services personnel. Included in the picture is Guelph Police Chief Bryan Larkin.



OPP K.I.D.S Program / D.A.R.E

Coordinator: Provincial Constable Kelly KRPAN

Meetings / Presentations:

- The OPP K.I.D.S Program is currently on hiatus and will resume in September 2014 to coincide with the start of the new school year. The old D.A.R.E. Program has now been completely phased-out. Only the OPP K.I.D.S Program will be presented in Wellington County.



Administration

Revenue

Year	County	Provincial	Total
2009	\$73,307.32	\$9,552.04	\$82,859.36
2010	\$87,122.04	\$7,899.10	\$95,012.14
2011	\$81,274.66	\$9,233.56	\$90,508.22
2012	\$75,836.60	\$5,043.55	\$80,880.15
2013	\$70,202.29	\$5,373.66	\$75,575.95
2014	\$50,132.72	\$4,293.00	\$54,425.72

Paid Duties

Year	Paid Duties	Officers	Hours	Admin Fees
2010	165	298	1,648.50	\$3,075.00
2011	207	446	2,455.25	\$5,325.00
2012	165	312	1,890.75	\$2,775.00
2013	227	469	3300.00	\$1,575.00
2014	111	204	1389.50	\$525.00

Personnel

Secondary Employment

Secondary Employment is any business, undertaking or calling that involves financial gain in which an employee participates while not on duty, including political activity.

Complaints

Complaint Type by Status	2009	2010	2011	2012	2013	2014
Complaints Received	19	13	16	16	12	10
Complaints Resolved	10	8	8	5	0	2
Complaints Unfounded	6	2	6	8	5	3
Complaints Withdrawn	2	3	1	2	4	1
Complaints Ongoing	1	0	1	1	3	4

No	Complaint Type	Status	No	Complaint Type	Status
1	Public	Closed	7	Public	Ongoing
2	Public	Closed	8	Internal	Ongoing
3	Public	Closed	9	Public	Closed
4	Public	Closed	10	Internal	Ongoing
5	Public	Closed			
6	Public	Ongoing			

Internal Complaint is an allegation by someone who is not a member of the public concerning the policy, services, local policies of a contract location, or the conduct of an employee or volunteer of the OPP and includes a WDHP allegation, and/or an allegation of workplace violence.

Public Complaint is a complaint by a member of the public concerning the policy, services, local policies of a contract location, or the conduct of an employee of the OPP.



Personnel

Acknowledgements

Date	Member(s)	Particulars
05 Jul 14	PC D. SZETO	Derek attended "OPP Bound" a successful annual OPP recruiting and awareness initiative hosted at our General Headquarters to help mentor the successful participants. He interacted on a one-to-one basis and provided leadership and advice throughout the event. His assistance and professionalism left a positive impression on all participants, peers and supervisors
30 Jul 14	PC S. THOMAS	<p>On July 30th, 2014 PC THOMAS responded to an assist call from the Guelph Eramosa Fire Department to a call at Camp Everton where an autistic child was in a crisis situation and had climbed to the top of the rafters in a barn.</p> <p>Upon arrival, the Fire Department found PC THOMAS already on scene speaking with the child, who had climbed down from the rafters. PC THOMAS took control of the situation and presented himself as a friend, gaining the trust of the child. PC THOMAS's ability to adjust his policing methods to the situation at hand allowed him to quickly calm the child and de-escalate the situation.</p> <p>In his own words Deputy Fire Chief Richard RENAUD said <i>"Constable Thomas may have responded as a police officer but he quickly realized that what was needed was an understanding friend. His ability to assess the situation and adjust his approach to this non-conventional call was in my opinion remarkable"</i></p>



Notable Events

Noteworthy Information and Events

Project Lifesaver

On Wednesday July 2, 2014 at 1:29PM the Wellington County OPP were called to a missing person from Guelph Street in Rockwood. A 78 year old male had wandered from his residence 30 minutes earlier. The male suffers from dementia and wears a Project Lifesaver radio frequency device. An officer specially trained in the use of the Project Lifesaver Equipment was deployed.

A weak signal was heard while leaving the South Wellington Operations Centre, a stronger signal heard at Main Street and Guelph Street. The male was located within 12 minutes of the search being initiated on Main Street south of Guelph Street. The male was transported to Guelph General Hospital for treatment.

Project Lifesaver is a valuable tool for loved ones who suffer from dementia and have a tendency to wander. It is an extra tool for the Police to search for loved ones and has proven again successful.

A successful media campaign immediately followed this incident where CTV News and local media met at Rockwood Conservation to interview Detachment Coordinator PC Heather Nellis. She also demonstrated the equipment and training required.

Retirement – Judy Culp

After 36 years of service with the Government of Ontario and the Ontario Provincial Police, Detachment Administration Clerk, Judy Culp retired. The celebration of her career was held at Centre Wellington Detachment and it was attended by many colleagues and friends. Judy's hard work, dedication, knowledge and smile will be missed.

On her last day Judy sent a letter out to all the members of the Wellington County OPP, here is a small excerpt from that letter,

"I feel truly blessed to have had the opportunity to have worked with such a terrific group of people and I am so proud and thankful to have had a career with such a great organization. I just want to thank everyone from the bottom of my heart for all the support during my wonderful 36 year career with the OPP"



Centre Wellington Administration: (Left to Right) Rachel Rumford, Judy Culp & Colleen McDougall




**County of Wellington OPP
Report for the Police Services Board**

Wellington County Street Crime Unit – Semi Annual Report

In 2013-14 Wellington County Detachment augmented their Street Crime Unit with resources and equipment. The Unit focuses on property, drug and street-level crime throughout the County. Their operations and deployment focus on high crime areas through confidential information, intelligence, detailed local analysis, working with uniform officers, school officers and the Major Crime Unit to proactively address public safety concerns in our municipalities.

The Wellington County Street Crime Unit released their Semi Annual Report detailing their operations and results from January to July 2014.

 WELLINGTON COUNTY OPP STREET CRIME UNIT						
Property Related						
2014	# of Warrants Executed	# of People Charged	# of Charges	\$ Value of Seizure - Property	\$ Value of Seizure - Auto	
JAN	0	0	0	0.00	0.00	
FEB	0	3	9	9,573.00	0.00	
MAR	0	0	0	0.00	0.00	
APR	0	0	0	0.00	0.00	
MAY	1	4	19	1,500.00	0.00	
JUN	1	0	0	0.00	80,000.00	
JUL	1	1	4	4,000.00	0.00	
Total	3	8	32	15,073.00	80,000.00	
Drug Related						
2014	# of Warrants Executed	# of People Charged	# of Charges doesn't include Poss chgs	Seizure Amount oz / lb / ml	\$ Value of Seizure	Type of Seizure
JAN	0	0	0		0.00	
FEB	1	2	6	1.1oz, 1kg,78 pills, 27 plants	33,400.00	Meth, Marihuana, Codiene, Mature Marihuana plant
MAR	1	1	6	18g/20 pills	2,000.00	Meth, Marihuana, Hydromorphone, Morphine
APR	0	0	0		0.00	
MAY	2	4	5	17g, 90 plants, 7 oz,	91,000.00	Meth, Marihuana
JUN	1	4	7	16g, 2 pills	2,200.00	Meth, Marihuana, oxycodone
JUL	2	2	1	12g	120.00	Marihuana
Total	7	13	25		\$128,720.00	



July Major Event Response

Several planned annual major events requiring an police operational plan were attended by officers during the busy summer months. Mapleton Rodeo, Mount Forest Fireworks, Belwood Lake Triathlon, Fergus Truck Show and the Hillside Community Festival had local Detachment participation to ensure the safety of all involved.

Annual Glen Allan Barnburner Event

On July 19th the annual Barnburner field party was held. The event is privately organized by the landowner and others. Admission is free and money is raised for charity through food and alcohol sales; entertainment is provided by a variety of musicians and bands.

Organizers of the event were forewarned several times by police to encourage attendees not to drink and drive or be subject to police intervention. In the last two years, seven, impaired related charges have been laid directly relating to this event.

Early on July 20th 2014 police set up R.I.D.E checks in the vicinity of the event as police believed there was a high probability of attendees leaving the event still under the influence of alcohol.

With the combined efforts of Uniform platoon officers and the Traffic Unit several charges were laid:

- 4 - Over 80 charges
- 1 - Breach Probation
- 4 – Three day suspensions
- 1 - 24 hour suspension
- 3 - Novice Drivers charged with BAC above zero

Publicly, Wellington County OPP Detachment Commander Inspector Scott Lawson stated,

"This is an example of what happens when event hosts fail to take the necessary steps to avoid what could be very costly in terms of potential human tragedy and civil liability.

Despite repeated warnings by us, the landowners chose to allow these inexcusable acts of drinking and driving to leave their property, any one of which could have turned very tragic. Not only is this irresponsible but the civil liability consequences if someone had been involved in a collision are far reaching.

What is it going to take for those who hold these large parties to understand the risks to all of us, I just don't get it. This is very disheartening"

Fergus Truck Show

The annual Fergus Truck Show was held from July 25th – 27th, 2014. Wellington County OPP and the Wellington County Traffic Unit patrolled the general area in force, while multiple officers and Auxiliary Unit members were on general patrol directly on the grounds of the event. Several arrests and incarceration resulted however no criminal charges were laid. 14 Liquor Licence Act charges were issued, most for public intoxication.

An After Action Review was organized based on public safety concerns raised by the Detachment. A post-event meeting was held with organizers, hired private security, the assigned AGCO Liquor Inspector, the Municipality and the OPP.



**Ontario Provincial Police
County of Wellington Detachment**

Inspector Scott Lawson

**Report for the
County of Wellington Police Services Board**

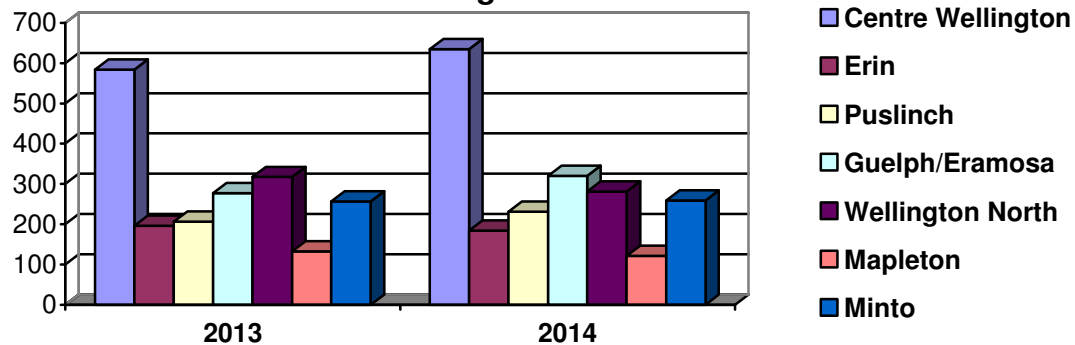
September 2014

This report covers the period from August 1st, 2014 to August 31st, 2014



Calls for Service

**Calls for Service August 2013
vs August 2014**



Calls For Service

Municipality	2008	2009	2010	2011	2012	2013	2014 YTD
Centre Wellington	6,236	6,240	6,214	5,996	6,449	5,961	4,051
Town of Erin	2,079	2,110	2,152	2,156	2,322	2,167	1,340
Puslinch Township	1,987	1,900	1,836	2,157	2,404	2,178	1,471
Guelph/Eramosa	3,035	3,214	3,224	3,615	3,272	3,397	2,335
Wellington North	3,313	3,295	3,172	3,169	3,136	3,337	2,087
Township of Mapleton	1,250	1,209	1,252	1,320	1,322	1,349	946
Town of Minto	2,546	2,352	2,322	2,384	2,725	2,524	1,592
Provincial	2140	1997	2,378	2,392	2,694	3,214	1,737
Totals	22,586	22,317	22,550	23,189	24,324	24,127	15,559

Victim Services Wellington

2014 Year to Date Calls for Assistance County of Wellington OPP	Previous Year Totals	
63	2011	105
	2012	122
	2013	100

911 Calls

2014 YTD	1,370
2011	2,340
2012	2,683
2013	2,520

Ontario Sex Offender Registry

2014 Year to Date OSOR Registrations	Previous Year Totals	
48	2011	67
	2012	69
	2013	70

False Alarms

2014 YTD	571
2011	946
2012	911
2013	961

*This is NOT the number of sex offenders residing in Wellington County



Crime

Crimes Against Persons	2013 YTD	2014 YTD
Homicide	0	0
Sexual Assault	61	28
Robbery	0	3
Assault	198	148

Other Crime	2013 YTD	2014 YTD
Fraud Investigations	195	135
Drug Investigations	284	272

Crimes Against Property	2013 YTD	2014 YTD
Break & Enter	197	138
Auto Theft	46	63
Theft	615	545
Mischief	333	311

Other Investigations	2013 YTD	2014 YTD
Domestic Disputes	345	234
Missing Persons	51	48

Crime Breakdown	North Wellington	Centre Wellington	South Wellington
Homicide	0	0	0
Sexual Assault	0	0	1
Robbery	0	0	0
Assault	5	10	8
Break & Enter	9	7	7
Auto Theft	1	0	2
Theft	18	53	21
Mischief	23	28	18
Fraud Investigations	7	5	7
Drug Investigations	14	9	16
Domestic Disputes	16	7	7
Missing Persons	2	3	1



Traffic

Enforcement

Traffic	YTD
Speeding	5,663
Seatbelt Offences	244
Careless Driving	155
Drive Under Suspended	174
Distracted Driver Offences	264
Other Moving Violations	206
Equipment and Other HTA	1,684
No Insurance - CAIA	81
Other Provincial Acts	YTD
Liquor Licence Act	289
Trespass to Property Act	181
Other CAIA	100
Other Provincial Acts	46
By-Law Offences	YTD
By-Law Offences (General)	721
Taxi By-Law	0
County of Wellington OPP Year To Date Total	9,402
West Region Traffic Unit Year To Date Total	406
YTD Total Traffic	8,471
YTD Total Other Provincial	616
YTD Total By-Law	721
2014 Year to Date POA Charges	9,808
2013 Year to Date POA Charges	12,135

Drinking and Driving

Impaired Driving	2013 YTD	2014 YTD
R.I.D.E. Vehicle Stops	43,705	25,522
Roadside Alcotests	472	461
Warn Suspensions	132	156
ADLS Suspensions	89	135
Persons Charged	93	128

Racing

YTD HTA Sec. 172 Impoundements	Previous Year Totals	
74	2011	80
	2012	82
	2013	93

Parking Enforcement

Municipality	2013 YTD	2014 YTD
Centre Wellington	321	466
Erin	12	7
Puslinch	258	137
Guelph / Eramosa	389	211
Wellington North	33	13
Mapleton	16	9
Minto	11	11
County / Other	0	0
Parking Totals	1,040	854



Traffic

Suspect Apprehension Pursuits

2014 YTD Pursuits / Fail to Stop for Police	Previous Year Totals	
2	2011	11
	2012	17
	2013	8

Traffic Initiatives

R.I.D.E

The Wellington County Traffic Unit conducted a total of 43 R.I.D.E initiatives across the County checking 4,424 vehicles, performing 93 roadside tests and laying 13 impaired driving charges.

Automated Licence Plate Reader (ALPR cruiser)

Wellington County Detachment had continued success with the Automated Licence Plate Reader (ALPR cruiser) during the month of August. With 63 hours of operating time officers laid 20 HTA charges, three Automobile Insurance Act charges, one impaired charge and two other criminal code offences. There were also 22 roadside tests conducted and 13 warn range suspensions handed out by officers operating the ALPR cruiser.

Marine Patrol

Throughout the month of August the Wellington County Traffic Unit conducted 59.50 hours of marine patrol on Belwood Lake, Puslinch Lake and Conestoga Lake. In all, 45 vessels were checked resulting in one warning, one Liquor Licence Act charge and one Canadian Shipping Act charge. There was also a charge of operate vessel in careless manner laid on Belwood Lake as a result of a complaint by other boat operators in the area.

Bicycle Patrol

During the spring of 2014 Wellington County OPP held two bicycle training courses. In all nine officers were trained and from June 15th to August 15th they took to the trails throughout Wellington County and they patrolled all the major events this summer.

During the month of August these officers conducted 6 hours of bicycle patrol for a year to date total of 20 hours.



Traffic

Motor Vehicle Collisions

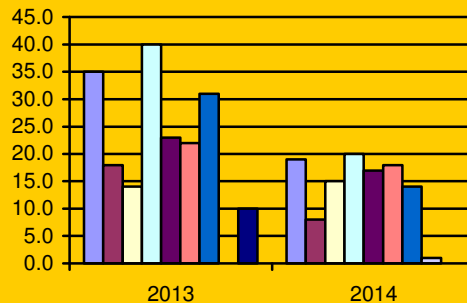
Month	Victims			Collisions								
	Total Victims	Persons Killed	Persons Injured	Total MVC	Fatal	PI	PD	Alcohol Involved			CMV	SMV
								Yes	No	Unk		
JAN	9	1	8	212	1	6	205	7	188	17	19	87
FEB	1	0	1	219	0	1	218	0	210	9	22	60
MAR	10	2	8	152	2	2	148	1	146	5	7	76
APR	22	0	22	122	0	10	112	3	98	21	4	60
MAY	40	1	39	116	1	24	91	3	98	15	6	49
JUN	29	0	29	119	0	18	101	5	98	16	11	51
JUL	36	1	35	129	1	21	107	3	112	14	8	50
AUG	45	0	45	132	0	24	108	4	114	14	7	39
SEP												
OCT												
NOV												
DEC												
TOTAL	192	5	187	1201	5	106	1090	26	1064	111	84	472

Yearly Collision Summary

Collision Type / Characteristic	2008	2009	2010	2011	2012	2013	2014 YTD
Total Reportable MVC	2,027	1,918	1,813	1,976	1,875	2,095	1,201
Property Damage MVC	1,733	1,694	1,525	1,649	1,565	1,761	1,090
Personal Injury MVC	281	213	282	320	302	326	106
Fatal MVC	13	11	6	7	8	8	5
Persons Killed	13	11	6	7	9	9	5
Persons Injured	384	314	425	463	442	481	187
Alcohol Involved	61	76	42	57	63	37	26
Total MVC	2,027	1,918	1,813	1,976	1,875	2,095	1,201

Car vs Deer Collisions

Municipality	2013 YTD	2014 YTD
Centre Wellington	35	19
Erin	18	8
Puslinch	14	15
Guelph / Eramosa	40	20
Wellington North	23	17
Mapleton	22	18
Minto	31	14
City of Guelph	0	1
Provincial Highways	10	0
Total Collisions	193	112





Canine Unit

2014 Calls for Service and Hours

Occurrence Type	Initial (Calls)	Initial (Hours)	Assist (Calls)	Assist (Hours)	YTD (Calls)	YTD (Hours)
Occurrence Totals (OPP)	47	220.00	4	27.00	51	247.00
Occurrence Totals (Other)	1	6.00	0	0.00	1	6.00
Occurrence Totals (Combined)	48	226.00	4	27.00	52	253.00

Canine Handler: Provincial Constable Barry REID

Notable Incidents and Events

Date: August 5 – 8, 2014

Location: Gravenhurst, Orillia, Bolton

Canine Refresher Training

Date: August 11, 2014

Location: Maplehurst Detention Centre

Maplehurst Detention Centre requested OPP canine assistance with a drug search. Canine attended with CO NEWHOOK and searched Unit 10-C. No indications were given

Date: August 11, 2014

Location: Monora Park, Orangeville

Canine Unit presentation and demonstration at OSPCA summer youth camp

Date: August 13, 2014

Location: Huron County

On August 12, 2014 a two year old child was reported missing from her family farm. The child has been missing for approximately two hours and the family had been looking for her since then. ERT and Canine searched the surrounding corn fields overnight. The following day, after resuming the search, the child was discovered in a bean field 750m away

Date: August 13, 2014

Location: Camp Brebeuf, Rockwood

Canine Unit demonstration and presentation at summer camp

Date: August 13, 2014

Location: Fergus

Canine Unit requested to assist with execution of CDSA search warrant. Canine staged nearby during entry by ERT. Warrant executed without any issues.

Canine Unit attended search warrant and was requested to assist with search for cocaine. Jag was used to search the back yard, nothing located and no areas of ground disturbance were observed. Jag was not used to search the inside of the residence due to several health concerns

Date: August 14, 2014

Location: Cayuga

Canine Unit was dispatched to assist Haldiman OPP officers locate a suicidal male who had fled into a field carrying a pellet rifle. Canine was cancelled prior to arrival when the suspect was located and apprehended at a nearby farm



Date: August 14, 2014

Location: Harriston

Canine Unit requested to assist with execution of CDSA warrant at an apartment complex. Canine covered the rear of the property during ERT entry. Warrant executed and one male occupant arrested without incident.

The Canine Unit was requested to assist with a drug search of the small apartment. The apartment had been searched by hand and a small quantity of methamphetamine was seized from the living room. Jag was used to search and nothing further was located

Date: August 15, 2014

Location: Huron County

Canine Unit was dispatched to assist with locating a male suspect who had assaulted his wife and smashed a vehicle window. The suspect suffers from mental health problems and had a recent change that triggered a setback in his recovery. While enroute to the scene, a patrol officer located and arrested the suspect

Auxiliary Unit

Coordinator: Provincial Constable John PEPPLER

Unit Commander: Auxiliary S/Sgt. B. MC GIMSIE

Notable Incidents and Events

Auxiliary Staff Sergeant MC GIMSIE reports that August was another busy month for the unit, but he suspects things to slow down as the summer comes to a close. The unit was once again inundated with a large amount of marine patrol requests, but was able to fulfill each request without issue.

Unit Activity – August 2014

- Marine patrol
- Fergus Highland Games
- Fergus Highland Games Parade
- Elora Riverfest
- COPD – Hanover Homecoming Parade and Concert
- COPD – Bayfield Fall Fair Parade and Concerts



Media

Provincial Constable Bob BORTOLATO & Provincial Constable Cheri ROCKEFELLER

Notable Incidents and Events

- During the month of August the Media Unit issued 47 media releases bringing the year-to-date total to 393 media releases



OPP K.I.D.S Program / D.A.R.E

Coordinator: Provincial Constable Kelly KRPAN

Meetings / Presentations:

- The OPP K.I.D.S Program will resume in September 2014 to coincide with the start of the new school year. The old D.A.R.E. Program has now been completely phased-out. Only the OPP K.I.D.S Program will be presented in Wellington County.



Administration

Revenue

Year	County	Provincial	Total
2009	\$73,307.32	\$9,552.04	\$82,859.36
2010	\$87,122.04	\$7,899.10	\$95,012.14
2011	\$81,274.66	\$9,233.56	\$90,508.22
2012	\$75,836.60	\$5,043.55	\$80,880.15
2013	\$70,202.29	\$5,373.66	\$75,575.95
2014	\$57,232.72	\$4,631.00	\$61,863.72

Paid Duties

Year	Paid Duties	Officers	Hours	Admin Fees
2010	165	298	1,648.50	\$3,075.00
2011	207	446	2,455.25	\$5,325.00
2012	165	312	1,890.75	\$2,775.00
2013	227	469	3300.00	\$1,575.00
2014	127	261	1789.50	\$600.00

Personnel

Complaints

Complaint Type by Status	2009	2010	2011	2012	2013	2014
Complaints Received	19	13	16	16	12	10
Complaints Resolved	10	8	8	5	0	2
Complaints Unfounded	6	2	6	8	5	3
Complaints Withdrawn	2	3	1	2	4	1
Complaints Ongoing	1	0	1	1	3	4

No	Complaint Type	Status	No	Complaint Type	Status
1	Public	Closed	7	Public	Ongoing
2	Public	Closed	8	Internal	Ongoing
3	Public	Closed	9	Public	Closed
4	Public	Closed	10	Internal	Ongoing
5	Public	Closed			
6	Public	Ongoing			

Internal Complaint is an allegation by someone who is not a member of the public concerning the policy, services, local policies of a contract location, or the conduct of an employee or volunteer of the OPP and includes a WDHP allegation, and/or an allegation of workplace violence.

Public Complaint is a complaint by a member of the public concerning the policy, services, local policies of a contract location, or the conduct of an employee of the OPP.



Personnel

Acknowledgements

Date	Member(s)	Particulars
05Aug14	PC VALLIER PC CAREY PC VACHON PC HAMMOND	<p>On August 5, 2014 PC CAREY and PC VALLIER investigated a report of a suspicious vehicle. Upon arrival, PC VALLIER noted a tractor trailer parked in front of a barn on the property and an adult male was walking out of the driving shed. When the male saw police he attempted to hide something in his pocket. PC VALLIER also noted the male was trying to close the door to the driving shed. There was also another adult male and female at the scene.</p> <p>It was disclosed that the male had tried to hide drugs in his pocket and he was arrested. Officers found the rear of the tractor trailer open and the entire trailer was full of new furniture. All three persons were arrested for possession of stolen property and transported to Centre Wellington.</p> <p>A shipping label on the new furniture identified a local Furniture company in Guelph. Investigation confirmed that a tractor trailer of furniture was stolen the day before from the same company on the shipping label. The property was estimated at approximately \$30,000.00</p>
06Aug14	D/C T. COWIE D/C J. YANTZI	<p>On August 6, 2014 both D/C COWIE and D/C YANTZI attended to assist front-line uniform members of the Wellington County Crime Unit with a property crime investigation. The officers were called out after just completing a late shift the day earlier and without hesitation jumped at the opportunity to assist.</p> <p>Constable VALLIER had three people arrested and detained for possession of property obtained by crime and requested assistance to write a warrant to seize stolen property located where the accused persons were arrested.</p> <p>PC VALLIER and his platoon worked together to give D/C COWIE and D/C YANTZI the information required to obtain the grounds to write a search warrant. D/C COWIE and YANTZI also conducted a parallel investigation to confirm information and acquire further information to support the search warrant.</p> <p>D/C COWIE submitted the search warrant via Telewarrant and it was granted. Members of the Wellington County Street Crime Unit assisted by Front-line uniform, Crime Unit and the FIS executed the warrant and recovered approximately \$30,000.00 worth of furniture and a tractor trailer unit all taken from the City of Guelph.</p>



22Aug14 PC S. SLESSOR

On August 22, 2014 PC SLESSOR was on general patrol on Wellington Road 11. He observed a pick-up truck go through a stop sign and almost strike his cruiser. PC SLESSOR initiated a traffic stop, but the driver sped off traveling at high speed. PC SLESSOR immediately called in the pursuit. His radio transmissions were clear, calm and he readily provided updates. For public safety reasons PC SLESSOR disengaged when the vehicle entered the Town of Drayton.

A short time later PC SLESSOR located the vehicle abandoned on a property within the Town of Drayton. He secured the scene and called for assistance. The vehicle and a nearby shed were searched and stolen property from Perth County was located. The investigation continues.

Notable Events

Noteworthy Information and Events

Civic Holiday

With the start of August comes the August long weekend or Civic holiday celebrated on the first Monday of the month. With tens of thousands of motorists heading to cottage country, Ontario Provincial Police take to the highways to ensure that everyone arrives at there holiday destination safely. This year, Wellington County OPP, was out in full force patrolling the highways, trails and waterways within the County. Below are the results of Wellington County OPP's commitment by charges laid and total number of hours dedicated to the initiative.

Wellington County – Statistics (Civic holiday)

Fail to move Over	4
Other Moving Violations	7
Speeding	220
Stunt / Racing	3
Seatbelt	10
Distracted Driving	3
Other HTA	20
LLA Charges	2
CAIA Charges	9
Impaired – Alcohol	3
Other Criminal Driving Charges	1
Warn Range Suspensions	4
Marine Offences	3
ATV Offences	1
Other Prov. Statutes	9
Drug Offences	1
Hwy - Total Hours Dedicated	144.25
Marine - Total Hours Dedicated	28.5
Trails - Total Hours Dedicated	1.5



Fentanyl "Patch for Patch" Program/Video

The Fentanyl "Patch for Patch" program is a joint public safety awareness initiative spearheaded by the Guelph-Wellington Drug Strategy and supported by the County of Wellington Communications Department. Stakeholders are working together to create a video that involves testimonials and educational information from the Chief Medical Officer of Public Health, the local pharmacy association, Wellington County OPP and the Guelph Police Service. Shooting of the video is planned for September 2014 with a public launch event scheduled for November.

Denny Bus Line

Wellington County Detachment partnered with Denny Bus Lines to proactively work with their school bus operators in a joint information session. PC SCHWINDT, PC ROCKEFELLER, PC VANDYK and Sgt. NIXON attended two sessions with Denny Bus Lines totalling 75 school bus drivers. The officers discussed safety, rules of the road, and enforcement of drivers who disobey flashing school bus lights and stop arms. They also spent time answering questions/concerns from the drivers and company officials. The officers received a very positive response from the drivers and management. A one-page driver complaint template was developed by the OPP to be used to capture important information should an offence be witnessed.

Mental Health

A joint meeting with members of the WWLHIN, Family Health Teams and CMHA took place in early August 2014. Those in attendance are working towards a coordinated response to Mental Health issues in Wellington County. The goal is a monthly situational table with involved agencies to address high risk clients putting plans in-place to be proactive and support the individual. The focus is achieving a reduction in hours spent by officers and emergency departments in addressing MHA responses. In addition, joint officer training sessions are being discussed. Talks are also taking place as to the feasibility of having a Mental Health employee co-located in one of the Wellington County OPP Operations Centres.

Riverfest

Riverfest 2014 took place this year on August 22nd & 23rd. Wellington County OPP, the Township of Centre Wellington and the organizers mutually worked together in advance of the event to develop an effective operational plan to address public safety. The event went off without a hitch. Officers deployed at the event remarked on the overall good behaviour of the participants with very little trouble.

Processing Activity Report

Page: 1

Data Type: Parking

Creation Date/Time: 03/09/2014 10:16:19 AM

Transaction dates of 01/06/2014 through 30/06/2014

The County of Wellington

Agency: All

Ticket Activity	Number	Value
Tickets - Entered		
AutoCite Ticket	0	\$0.00
Manually Entered Ticket	36	\$720.00
Skeletal Ticket	0	\$0.00
Subtotal Tickets Entered	36	\$720.00
Tickets - Reactivations		
Voids - Reinstated	0	\$0.00
Dismissals - Reversed	0	\$0.00
Waived - Reversed	0	\$0.00
Subtotal Ticket Reactivated	0	\$0.00
Tickets - Removed		
Voided	0	\$0.00
Dismissed	13	\$260.00
Waived	0	\$0.00
Skeletal Ticket Matches	0	\$0.00
Subtotal Ticket Removed	13	\$260.00
Total Ticket Activity	23	\$460.00
Fines and Fees Added		
Fines Added	0	\$0.00
Late Fees Added	32	\$320.00
NSF Fees Added	0	\$0.00
Other Fees Added	99	\$1,956.00
Total Fines and Fees Added	131	\$2,276.00
Fines and Fees Removed		
Fines Removed	0	\$0.00
Late Fees Removed	1	\$10.00
NSF Fees Removed	0	\$0.00
Other Fees Removed	0	\$0.00
Total Fines and Fees Removed	1	\$10.00
Total Change from Ticket Activity and Added Fees		\$2,726.00

Payment Activity	Number	Fine	Late Fee	NSF Fee	Service Fee	Total \$
Ticket - Payments						
Fully Paid	37	\$720.00	\$140.00	\$0.00	\$89.50	\$949.50
Partially Paid	13	\$390.00	\$0.00	\$0.00	\$208.00	\$598.00
Over Payments	0	\$0.00	\$0.00	\$0.00	\$0.00	\$0.00
Subtotal Payments	50	\$1,110.00	\$140.00	\$0.00	\$297.50	\$1,547.50
Outside Payments	50	\$1,110.00	\$140.00	\$0.00	\$297.50	\$1,547.50
Ticket Payments Rescinded						
Payment Reversals	0	\$0.00	\$0.00	\$0.00	\$0.00	\$0.00
NSF Reversals	0	\$0.00	\$0.00	\$0.00	\$0.00	\$0.00
Subtotal Rescinded Payments	0	\$0.00	\$0.00	\$0.00	\$0.00	\$0.00
Refunded Overpayments	0	\$0.00				\$0.00
Payments	50	\$1,110.00	\$140.00	\$0.00	\$297.50	\$1,547.50
Total Fees Paid				0		\$0.00
Gross Revenue(Total Payments - Total Fees Paid)						\$1,547.50
Adjustments				0		\$0.00

Net Database Change(Total Change from Activity and Added Fees - Total Payments - Adjustments)

\$1,178.50

Processing Activity Report

Page: 1

Data Type: Parking

Creation Date/Time: 03/09/2014 10:16:35 AM

Transaction dates of 01/07/2014 through 31/07/2014

The County of Wellington

Agency: All

Ticket Activity	Number	Value
Tickets - Entered		
AutoCite Ticket	0	\$0.00
Manually Entered Ticket	57	\$1,140.00
Skeletal Ticket	0	\$0.00
Subtotal Tickets Entered	57	\$1,140.00
Tickets - Reactivations		
Voids - Reinstated	0	\$0.00
Dismissals - Reversed	0	\$0.00
Waived - Reversed	0	\$0.00
Subtotal Ticket Reactivated	0	\$0.00
Tickets - Removed		
Voided	1	\$66.00
Dismissed	13	\$260.00
Waived	0	\$0.00
Skeletal Ticket Matches	0	\$0.00
Subtotal Ticket Removed	14	\$326.00
Total Ticket Activity	43	\$814.00
Fines and Fees Added		
Fines Added	0	\$0.00
Late Fees Added	29	\$290.00
NSF Fees Added	0	\$0.00
Other Fees Added	14	\$220.75
Total Fines and Fees Added	43	\$510.75
Fines and Fees Removed		
Fines Removed	1	\$15.00
Late Fees Removed	1	\$10.00
NSF Fees Removed	0	\$0.00
Other Fees Removed	0	\$0.00
Total Fines and Fees Removed	2	\$25.00
Total Change from Ticket Activity and Added Fees		\$1,299.75

Payment Activity	Number	Fine	Late Fee	NSF Fee	Service Fee	Total \$
Ticket - Payments						
Fully Paid	42	\$840.00	\$140.00	\$0.00	\$32.00	\$1,012.00
Partially Paid	13	\$390.00	\$0.00	\$0.00	\$208.00	\$598.00
Over Payments	0	\$0.00	\$0.00	\$0.00	\$0.00	\$0.00
Subtotal Payments	55	\$1,230.00	\$140.00	\$0.00	\$240.00	\$1,610.00
Outside Payments	55	\$1,230.00	\$140.00	\$0.00	\$240.00	\$1,610.00
Ticket Payments Rescinded						
Payment Reversals	0	\$0.00	\$0.00	\$0.00	\$0.00	\$0.00
NSF Reversals	0	\$0.00	\$0.00	\$0.00	\$0.00	\$0.00
Subtotal Rescinded Payments	0	\$0.00	\$0.00	\$0.00	\$0.00	\$0.00
Refunded Overpayments	0	\$0.00				\$0.00
Payments	55	\$1,230.00	\$140.00	\$0.00	\$240.00	\$1,610.00
Total Fees Paid				0		\$0.00
Gross Revenue(Total Payments - Total Fees Paid)						\$1,610.00
Adjustments				0		\$0.00

Net Database Change(Total Change from Activity and Added Fees - Total Payments - Adjustments)

\$-310.25 71

Processing Activity Report

Page: 1

Data Type: Parking

Creation Date/Time: 03/09/2014 10:17:01 AM

Transaction dates of 01/08/2014 through 31/08/2014

The County of Wellington

Agency: All

Ticket Activity		Number	Value
Tickets - Entered			
AutoCite Ticket		0	\$0.00
Manually Entered Ticket		48	\$2,360.00
Skeletal Ticket		0	\$0.00
Subtotal Tickets Entered		48	\$2,360.00
Tickets - Reactivations			
Voids - Reinstated		0	\$0.00
Dismissals - Reversed		0	\$0.00
Waived - Reversed		0	\$0.00
Subtotal Ticket Reactivated		0	\$0.00
Tickets - Removed			
Voided		0	\$0.00
Dismissed		0	\$0.00
Waived		0	\$0.00
Skeletal Ticket Matches		0	\$0.00
Subtotal Ticket Removed		0	\$0.00
Total Ticket Activity		48	\$2,360.00
Fines and Fees Added			
Fines Added		0	\$0.00
Late Fees Added		15	\$150.00
NSF Fees Added		0	\$0.00
Other Fees Added		7	\$112.00
Total Fines and Fees Added		22	\$262.00
Fines and Fees Removed			
Fines Removed		1	\$280.00
Late Fees Removed		1	\$10.00
NSF Fees Removed		0	\$0.00
Other Fees Removed		0	\$0.00
Total Fines and Fees Removed		2	\$290.00
Total Change from Ticket Activity and Added Fees			\$2,332.00

Payment Activity	Number	Fine	Late Fee	NSF Fee	Service Fee	Total \$
Ticket - Payments						
Fully Paid	51	\$1,005.00	\$250.00	\$0.00	\$76.75	\$1,331.75
Partially Paid	0	\$0.00	\$0.00	\$0.00	\$0.00	\$0.00
Over Payments	0	\$0.00	\$0.00	\$0.00	\$0.00	\$0.00
Subtotal Payments	51	\$1,005.00	\$250.00	\$0.00	\$76.75	\$1,331.75
Outside Payments	52	\$985.00	\$240.00	\$0.00	\$76.75	\$1,301.75
Ticket Payments Rescinded						
Payment Reversals	1	\$20.00	\$10.00	\$0.00	\$0.00	\$30.00
NSF Reversals	0	\$0.00	\$0.00	\$0.00	\$0.00	\$0.00
Subtotal Rescinded Payments	1	\$20.00	\$10.00	\$0.00	\$0.00	\$30.00
Refunded Overpayments	0	\$0.00				\$0.00
Payments	50	\$985.00	\$240.00	\$0.00	\$76.75	\$1,301.75
Total Fees Paid				0		\$0.00
Gross Revenue(Total Payments - Total Fees Paid)						\$1,301.75
Adjustments	Uncollectable Fines and Fees			0		\$0.00

Net Database Change(Total Change from Activity and Added Fees - Total Payments - Adjustments)

\$1,030.25 72



COUNTY OF WELLINGTON

COMMITTEE REPORT

To: Chair and Members of the Police Services Board
From: Kelly-Ann Wingate, Parking, Licensing and Alarm Coordinator
Date: Wednesday, September 10, 2014
Subject: False Alarm Revenue Report

False Alarm revenue collected for 2014.

Month	False Alarms sent to the County for invoicing	Amount invoiced to customers	Amount collected to date
January	68	\$2600	\$2700
February	0	\$200	\$3300
March	66	\$4900	\$900
April	38	\$1850	\$3200
May	44	\$2500	\$3300
June	54	\$3050	\$1400
July	42	\$1750	\$3300
August	46	\$2650	\$1250
September			
October			
November			
December			
2014 YTD	358	\$19,500	\$19,350
2013 YTD	305	\$26,400	\$26,300
2013 Totals	463	\$39,400	\$38,250

Recommendation:

That the September 2014 False Alarm Revenue report be received for information.

Respectfully submitted,

Kelly-Ann Wingate
Parking, Licensing and Alarm Coordinator



COUNTY OF WELLINGTON

COMMITTEE REPORT

To: Chair and Members of the Roads Committee
From: Gordon J. Ough, P. Eng., County Engineer
Date: September 9, 2014
Subject: **Community Safety Zone Request**

Background:

Attached is a request to designate a newly paved section of WR14 (Eliza St.) in Arthur as a Community Safety Zone.

Several years ago the concept of designating “proven and persistent problem areas” as Community Safety Zones was imported into Canada from the USA.

Our neighbour, the Region of Waterloo, installed several “pilot programme Community Safety Zones (CSZs)” several years ago and have taken all but two or three out. It is my understanding that the Region tried to take these remaining few out but protests from the local residents to removing them resulted in them being left in.

Apparently, the traffic calming was very short lived because police enforcement was sustained when the CZSs first went in but could not be sustained for the long term because the locations where the CSZs went in were not always “proven and persistent problem areas” and did not always draw a police presence.

In the attached correspondence from Dan and Willaby Cotton they also mention the use of signs that record your speed as a traffic calming device.

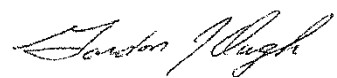
The County currently does not own any of these types of signs. There are a few signs of this type within the County that have been erected either by local municipalities or service clubs.

The Cotton’s indicate that those signs do catch their attention and slow them down. I have heard that the traffic calming can be short lived with these signs as well. Some drivers, apparently even speed up to see how high a number they can record. Again, if these signs are not placed in truly problem areas when a police presence is already attracted, meaningful traffic calming is likely somewhat short lived.

Recommendation:

It is recommended that a letter of response be sent to Mr. & Mrs. Cotton indicating that we will pass their concerns along to the Wellington County OPP for their periodic monitoring of the area; and that in the absence of this area being considered a proven and persistent problem area, the use of a Community Safety Zone or a radar speed sign are not anticipated at this time.

Respectfully submitted,

A handwritten signature in cursive script, appearing to read "Gordon J. Ough".

Gordon J. Ough, P. Eng.
County Engineer

Kim Courts

From: Lynda White
Sent: August 19, 2014 12:12 PM
To: Gord Ough; Scott Wilson; Scott.Lawson@ontario.ca; Joanne Ross; Raymond Tout; Donna Bryce
Cc: Kim Courts
Subject: FW: county road

Follow Up Flag: Follow up
Flag Status: Flagged

Categories: No Appts

Hello All:

I would appreciate if this request was put on the September agenda's for both Roads Committee and Police Board, and a reply back to the Cotton's once a decision is made. I would like to be informed on the decisions made. Thanks so much. See you in September.

Regards, Lynda

Lynda White
County of Wellington
Councillor Ward 4
519-848-3145

-----Original Message-----

From: info@esolutionsgroup.ca [<mailto:info@esolutionsgroup.ca>] On Behalf Of d_w_cotton@hotmail.com
Sent: August-18-14 5:29 PM
To: Lynda White
Subject: county road

Hi Linda

We are most grateful for the beautifully paved road that our business True North Car Wash and Storage is on, this job was completed in a very timely matter.

As concerned citizens we worry about the speed traveled on that road as drivers are entering Arthur. Now that it is so wonderfully smooth we fear the speed will be even more so.

Could that part of the road be designated a Community Safety Zone, then those caught speeding there would have greater fines to pay. A sign that records your speed traveled also slows people down, at least it does me! These are questions we would appreciate you answering for us.

Thanks for your attention to this Linda.

Dan and Willaby Cotton

Home phone 519-848-2267 or return email

Origin: <http://www.wellington.ca/en/government/meetyourcountycouncil.asp>

This email was sent to you by Willaby Cotton<d_w_cotton@hotmail.com> through <http://www.wellington.ca/>.