



The Corporation of the County of Wellington Information, Heritage and Seniors Committee Agenda

November 12, 2014

Terrace Boardroom

6:00 pm Library

Members: Warden White; Councillors Mackenzie (Chair), Innes, Maieron, Tosh; Brad Whitcombe, Walter Trachsel, Jennifer Dixon

	Pages
1. Call to Order	
2. Declaration of Pecuniary Interest	
3. Library	
3.1 Fergus Library Renovation Project Status Report	2 - 3
3.2 Palmerston Library Renovations Presentation L. Grinham Architects	4 - 17
3.3 Library Financial Statements as of October 31, 2014	18 - 19
3.4 Chief Librarian's Report	20 - 24
3.5 Library Use Statistics	25 - 31
3.6 Items for Information	
3.6.1 Globe and Mail Article, November 2014 Libraries Lend a Hand to Development	32 - 33
3.6.2 The Next Chapter, November 2014 edition of the Library Newsletter	34 - 35
3.6.3 Remembrance Day Insert	36 - 36
4. Closed Meeting	
5. Rise and Report	
6. Adjournment	
Next meeting date January 14, 2015 or at the call of the Chair.	



COUNTY OF WELLINGTON

COMMITTEE REPORT

To: Chair and Members of the Information, Heritage and Seniors Committee
From: Kevin Mulholland, Construction & Property Manager
Date: Wednesday, November 12, 2014
Subject: Fergus Library Renovation - Project Status Report #11

Status of project	<ul style="list-style-type: none">- Curtain wall installation has continued- Steel studs & drywall installation is complete- Masonry has been continued- Mechanical & electrical installations have continued- Front entrance stairs have been installed- East concrete ramp is now complete- South concrete ramp has begun- Ceramic installation has begun- Elevator installation is complete
Upcoming work and deadlines	<ul style="list-style-type: none">- Curtain wall installation will be completed- Front entrance railings will be installed- west walkway will be completed- south sidewalk & stamped concrete will be installed- paving will be complete- South concrete ramp will be installed- Metal siding will be installed- Doors & hardware will be completed- Ceramic installation will be finished- Carpet/linoleum installation scheduled to begin- Washroom partitions & accessories will be installed- Interior glazing will be finished- Drywall taping will be completed- T-Bar ceilings & painting will be complete- Mechanical & electrical installations will continue
Status of construction schedule	<ul style="list-style-type: none">- substantial completion is currently scheduled for December 31, 2014
C.O.'s approved since last meeting	<ul style="list-style-type: none">- 13
Total change orders approved to date	<ul style="list-style-type: none">- 44
Net value of C.O.'s approved to date	<ul style="list-style-type: none">- \$137,834.52-

Recommendation:

That the Fergus Library Project Status Report be received for information.

Respectfully submitted,

A handwritten signature in dark ink, appearing to read 'K Mulholland', written in a cursive style.

Kevin Mulholland
Construction & Property Manager





















GRINHAM ARCHITECTS

15 Yarmouth Street, Guelph, Ontario, N1H 4G2
 Telephone: 519.766.1580 | Fax: 519.766.1377
 Email: info@grinham.ca | Web: www.grinham.ca

FROM CIRCULATION DESK | WELLINGTON COUNTY LIBRARY
 TO LOUNGE AREA / COMPUTERS | PALMERSTON BRANCH
 SCALE: N.T.S. | 265 BELL STREET, PALMERSTON, ONTARIO











County of Wellington
Library Services
Statement of Operations as of
31 Oct 2014

	Annual Budget	October Actual \$	YTD Actual \$	YTD Actual %	Remaining Budget
Revenue					
Grants and Subsidies	\$157,500	\$4,133	\$4,633	3%	\$152,867
Municipal Recoveries	\$24,700	\$0	\$14,880	60%	\$9,820
Licenses, Permits and Rents	\$33,000	\$7,478	\$31,518	96%	\$1,482
User Fees & Charges	\$94,100	\$7,558	\$70,475	75%	\$23,625
Sales Revenue	\$7,900	\$586	\$8,485	107%	\$(585)
Other Revenue	\$0	\$722	\$4,717	0%	\$(4,717)
Total Revenue	\$317,200	\$20,476	\$134,709	42%	\$182,491
Expenditures					
Salaries, Wages and Benefits	\$3,597,300	\$288,046	\$2,865,759	80%	\$731,541
Supplies, Material & Equipment	\$795,900	\$88,039	\$651,883	82%	\$144,017
Purchased Services	\$775,000	\$67,607	\$704,780	91%	\$70,220
Insurance & Financial	\$25,100	\$0	\$22,118	88%	\$2,982
Minor Capital Expenses	\$47,000	\$14,258	\$74,305	158%	\$(27,305)
Debt Charges	\$693,400	\$44,871	\$629,945	91%	\$63,455
Internal Charges	\$1,500	\$0	\$350	23%	\$1,150
Total Expenditures	\$5,935,200	\$502,821	\$4,949,140	83%	\$986,060
NET OPERATING COST / (REVENUE)	\$5,618,000	\$482,344	\$4,814,431	86%	\$803,569
Transfers					
Transfers from Reserves	\$(209,700)	\$(14,258)	\$(74,305)	35%	\$(135,395)
Transfer to Capital	\$300,000	\$0	\$300,000	100%	\$0
Transfer to Reserves	\$1,500,000	\$0	\$1,500,000	100%	\$0
Total Transfers	\$1,590,300	\$(14,258)	\$1,725,695	109%	\$(135,395)
NET COST (REVENUE)	\$7,208,300	\$468,086	\$6,540,126	91%	\$668,174



County of Wellington

Library Services

Capital Work-in-Progress Expenditures by Department

All Open Projects For The Period Ending October 31, 2014

	Approved Budget	October Actual	LIFE-TO-DATE ACTUALS			% of Budget	Remaining Budget
			Current Year	Previous Years	Total		
Aboyne Facility Improvements	\$570,000	\$0	\$0	\$106,166	\$106,166	19%	\$463,834
Fergus Branch Exp and Reno	\$5,000,000	\$373,378	\$1,919,683	\$1,326,512	\$3,246,195	65%	\$1,753,805
Fergus Branch Coll Enhancement	\$50,000	\$1,292	\$2,581	\$0	\$2,581	5%	\$47,419
Palmerston Branch Exp	\$500,000	\$0	\$20,623	\$0	\$20,623	4%	\$479,377
Radio Frequency ID System	\$50,000	\$0	\$11,054	\$0	\$11,054	22%	\$38,946
Total Capital	\$6,170,000	\$374,670	\$1,953,941	\$1,432,677	\$3,386,618	55%	2,783,382



COUNTY OF WELLINGTON

COMMITTEE REPORT

To: Chair and Members of the Information, Heritage and Seniors Committee
From: Murray McCabe, Chief Librarian
Date: November 3, 2014

Subject: Report from Chief Librarian November 2014

Background:

To provide the Library Board with a brief overview of events and activities from across the library system.

Updates:

Branch news: The Library Board's 14 library branches hosted numerous activities to celebrate national public library month and Ontario Public Library Week. Monthly reports from the branch supervisors in October were replete with programme success stories and photographs of crowds of engaged children and happy parents. At the end of this report you will see a sampling of the various events offered across the system. The special event children's programming is well received by children, parents and area teachers as they provide access to talented entertainers that would normally require a lengthy and expensive trip to a urban venue. Children's author Sharon Jennings, and children's entertainer Cindy Cook of the internationally acclaimed Polka Dot Door children's show, made appearances at a number of the county libraries. The Arthur branch and others provided magicians and cartoonists while library staff hosted numerous Halloween themed events, book draws and our successful story time sessions.

Rockwood Branch:

On Wednesday, October 22 the new programme room at Rockwood was officially opened with the assistance of children's author Sharon Jennings and Warden Chris White. The morning started with Ms. Jennings reading from a number of her books to 25 children and their parents and by days end staff reported about a hundred residents coming in to see the new space. I'm happy to report that the community loves this new warm and welcoming programme room.

Fergus Branch:

The temporary library continues to attract a solid number of patrons. Under the direction of Branch Supervisor, Rebecca Hine, Fergus library staff have done a wonderful job in continuing to provide high caliber library service to the community. Staff is currently tagging the existing collection with RFID tags in preparation for the move to the newly renovated library.

Hillsburgh Branch:

The branch once again offered their Paws for Literacy programme on Saturday, October 25 with 12 children coming out to read to the four literacy dogs. The event gives children the opportunity to practice their reading skills with the welcoming audience of a man's best friend. The success of this type of programme has been recognized by many libraries across North America and the programme in Hillsburgh has proven to be a perennial favourite. Branch Supervisor Donna Revell notes that boys are always keen to participate with eight of the twelve children this past month being males. As boys typically identified as reluctant readers, programmes like this provide a good opportunity to nurture entry level readers.

Ontario Library Association:

The provincial library association has begun to publish a new online journal for its members with the second edition being emailed out at the start of November. The current issue features a brief article by Rudi Denham, CEO at St Thomas Public Library on the modernization of Carnegie libraries in Ontario. The article gives honourable mention to the Carnegie libraries in Mt Forest and Harriston highlighting how their recent renovations have rejuvenated and expanded the buildings to meet the needs of each community including legislated accessibility requirements.

Provincial Grant for public libraries:

Ontario's Ministry of Tourism, Culture and Sport is preparing to announce the rollout of a new three-year \$10 million grant for public libraries. The Ontario Libraries Capacity Fund in its first year will provide funding for information technology related expenditures. In years two and three the focus of the grant will change to support research and innovation in the public library sector. The funding formula will be based on population served, the number of branches in a library system and geographical location in the province. The most recent email from the ministry states that grants will range from \$3,000 to \$300,000. This grant would be in addition to the annual operating grant all public libraries receive from the province, a grant amount that has been frozen since 1995.

New Library Board:

With a new council being inaugurated in December 2014, the County Clerk has published the required public notice for interested citizens to make application to sit on the library board. Applications will be accepted by the County Clerk until 4 p.m. November 24, 2014. Current citizen appointees to the board must make formal application to the Clerk if they want to be considered for a position on the new board. Appointments to the board are made by County Council.

My thanks to the outgoing library board for welcoming me to Wellington back in 2011. The board accomplished a great deal over the last few years and continued a building and renovation programme that has received admiration from many in the provincial library community. The board has governed during a time of considerable transformation in public libraries where the use of electronic resources has skyrocketed and the library, as an important community hub has been recognized by city builders. While these changes have been witnessed by library boards across the province, Wellington's ongoing strategic investment in staff and facilities ensure the past 100 year investment in library service will continue to meet the needs and expectations of residents throughout this large and diverse county.

Included in the board package for this month is an article from the Globe and Mail that speaks to the importance public libraries as one tool for keeping the downtown areas vibrant and being used to attract other investment.

Recommendation:

That the Chief Librarian's report for November 2014 be received for information.

Respectfully submitted,

Murray McCabe

Chief Librarian

Ontario Public Library Week Branch Events



Arthur





Rockwood Programme Room Opening
Author Sharon Jennings, Warden Chris White

Wellington County Library

OCTOBER 2014

Use Statistics

Prepared for: Wellington County Library Board

Meeting Date: November 12, 2014

Prepared by: Chanda Gilpin, Assistant Chief Librarian

Date: November 5, 2014



Use Statistics

	2014	2013
System wide circulation:	October	October
Print, cds, dvds, magazines and audiobooks:	79,722	85,081
eBooks borrowed:	4,447	3,409
Inter-library loan, material loaned:	265	440
Public computer usage within the libraries:	6,610	6,474
Programme attendance:	3,720	3,375
Database usage	10,382	12,003
Public wireless users:	4,146	4,211

Circulation Statistics

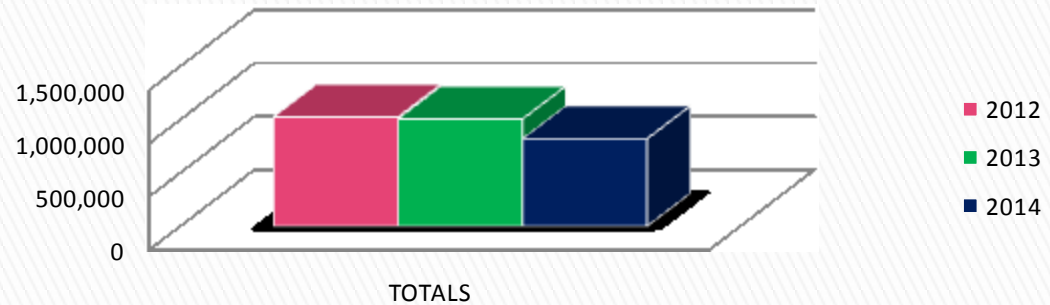
*Circulation of Material – Traditional Formats

		JAN	FEB	MAR	APR	MAY	JUN	JULY	AUG	SEP	OCT	NOV	DEC	TOTALS
ABOYNE	2012	11,215	11,405	12,283	10,976	10,132	11,626	13,819	13,053	10,872	12,152	12,324	10,184	140,041
	2013	12,232	11,460	13,023	12,133	11,571	12,535	16,665	14,355	11,838	11,831	11,807	9,425	148,875
	2014	12,479	10,993	14,565	11,264	12,268	12,391	16,870	13,469	10,593	11,634			126,526
ARTHUR	2012	5,093	4,790	5,450	4,704	4,888	5,032	6,774	4,837	4,350	4,600	4,723	3,766	59,007
	2013	4,965	3,996	4,722	4,529	4,542	4,913	6,924	5,380	4,737	5,162	4,567	3,414	57,851
	2014	4,587	4,321	4,716	4,768	4,506	4,762	6,459	5,209	4,493	5,137			48,958
CLIFFORD	2012	1,693	1,510	1,472	1,459	1,583	1,819	2,048	1,842	1,746	1,493	1,606	1,143	19,414
	2013	1,543	1,367	1,538	1,357	1,490	1,557	2,045	1,624	1,184	1,576	1,254	1,177	17,712
	2014	1,372	1,264	1,623	1,264	1,392	1,534	2,056	1,544	1,440	1,433			14,922
DRAYTON	2012	12,320	11,291	10,937	10,190	9,668	10,391	14,934	12,304	9,889	11,984	10,286	9,228	133,422
	2013	11,088	10,128	10,136	10,306	8,582	9,903	14,501	10,694	9,753	10,431	10,174	8,704	124,400
	2014	9,908	9,502	10,947	9,314	8,648	9,901	13,317	10,716	9,503	9,266			101,022
ELORA	2012	5,526	5,536	5,806	5,002	5,237	5,496	6,897	6,445	5,940	6,106	5,786	5,652	69,429
	2013	5,961	5,162	5,718	5,789	5,513	4,902	7,933	6,589	5,727	5,698	5,659	4,704	69,355
	2014	5,520	4,759	5,988	5,791	5,498	4,790	6,699	6,056	5,318	5,598			56,017
ERIN	2012	4,593	5,031	5,695	4,757	4,502	4,824	6,076	5,959	4,817	5,473	5,236	4,608	61,571
	2013	5,075	4,167	4,880	4,702	4,691	4,409	6,772	5,889	5,135	4,979	4,579	3,735	59,013
	2014	4,214	3,793	4,766	4,285	4,198	4,226	6,107	4,765	4,521	4,604			45,479
FERGUS	2012	12,362	12,127	12,301	10,893	11,437	11,232	13,940	14,062	11,250	12,311	11,834	10,247	143,996
	2013	12,383	11,474	11,738	10,773	10,713	8,125	11,894	11,284	9,744	10,691	10,339	9,275	128,433
	2014	10,052	9,000	10,803	11,077	10,023	8,008	13,506	11,435	10,249	10,272			104,425
HARRISTON	2012	2,948	2,828	3,063	2,433	2,362	2,345	6,023	5,739	4,768	4,948	4,556	3,972	45,985
	2013	4,794	4,264	4,625	4,353	4,126	4,184	6,310	5,535	4,543	4,980	4,385	2,790	54,889
	2014	3,879	4,026	4,652	4,062	3,825	4,154	5,633	4,585	4,207	4,428			43,451
HILLSBURGH	2012	3,397	3,167	3,519	3,042	3,251	3,293	4,614	4,102	3,255	3,324	3,385	3,025	41,374
	2013	3,588	3,212	3,465	3,627	3,110	3,378	4,662	3,837	3,287	3,893	3,647	2,954	42,660
	2014	3,547	2,845	3,440	3,632	3,147	3,370	4,271	3,524	2,835	2,923			33,534
MARDEN	2012	4,600	4,282	4,702	4,033	4,146	3,942	4,764	4,452	4,289	4,918	4,084	3,936	52,148
	2013	4,661	3,848	4,038	4,658	3,960	4,002	5,278	4,227	4,013	3,866	3,865	3,240	49,656
	2014	3,887	3,267	4,276	3,843	3,502	3,905	5,040	4,634	3,841	3,943			40,138
MT FOREST	2012	7,180	7,092	7,529	6,949	7,282	7,571	8,885	8,611	6,790	7,177	7,325	6,494	88,885
	2013	7,566	7,008	7,674	7,820	7,011	7,284	9,789	8,694	7,904	8,652	7,754	6,919	94,075
	2014	7,392	7,539	8,416	7,486	7,476	7,246	10,308	8,180	7,949	8,120			80,112
PALMERSTON	2012	2,518	2,503	2,458	2,249	2,588	2,380	3,250	3,109	2,767	2,593	2,604	2,177	31,196
	2013	2,804	2,530	2,496	2,822	2,738	2,430	3,190	2,684	2,293	2,635	2,304	2,272	31,198
	2014	2,100	1,944	2,239	2,410	2,188	2,403	3,270	2,707	2,411	2,801			24,473
PUSLINCH	2012	4,417	4,511	4,489	3,890	4,122	3,889	4,795	4,414	3,720	4,232	4,270	3,674	50,423
	2013	3,924	3,595	3,886	3,827	3,902	3,910	4,501	4,032	3,088	3,763	3,177	2,738	44,343
	2014	3,234	2,777	3,269	3,343	3,317	3,878	3,905	3,140	2,937	3,010			32,810
ROCKWOOD	2012	7,273	6,892	7,557	6,563	6,847	7,292	9,420	8,456	6,639	7,508	6,855	5,516	86,818
	2013	7,068	6,145	6,935	6,478	6,248	7,041	9,914	7,738	6,649	6,924	6,073	5,017	82,230
	2014	5,942	5,473	6,930	6,867	6,236	6,997	8,758	7,191	6,339	6,553			67,286
TOTALS	2012	85,135	82,965	87,261	77,140	78,045	81,132	106,239	97,385	81,092	88,819	84,874	73,622	1,023,709
	2013	87,652	78,356	84,874	83,174	78,197	78,573	110,378	92,562	79,895	85,081	79,584	66,364	1,004,690
	2014	78,113	71,503	86,630	79,406	76,224	77,565	106,199	87,155	76,636	79,722	0	0	819,153

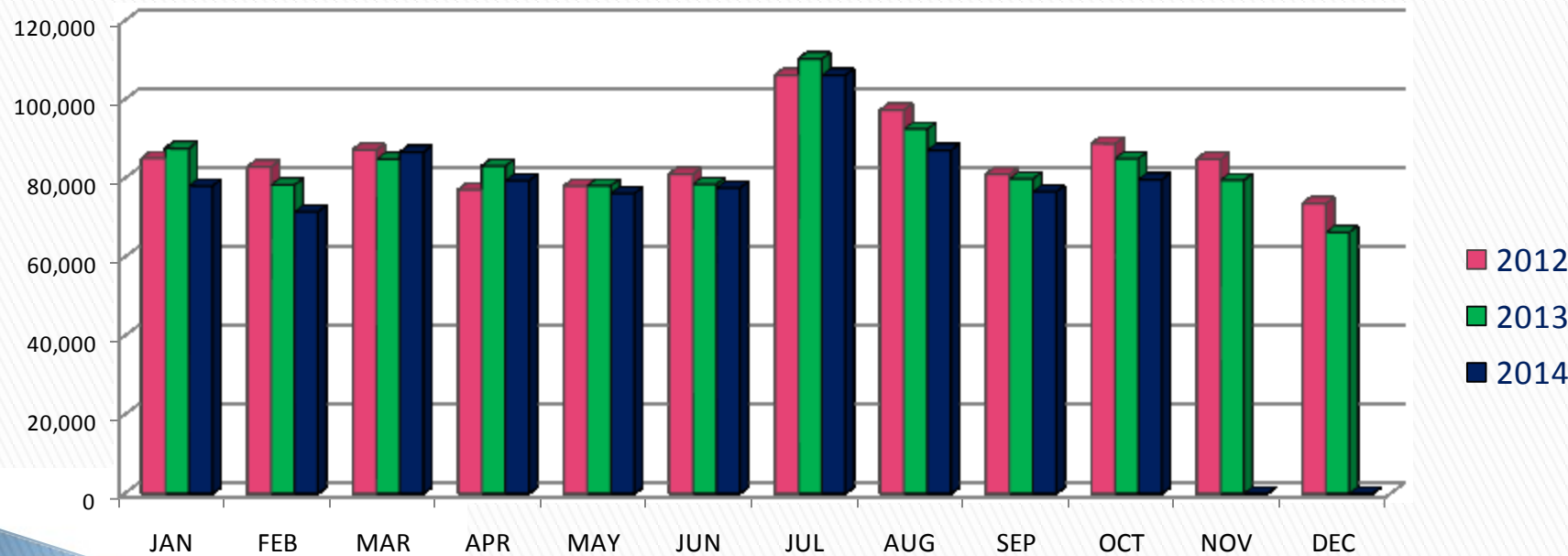
Annual Change	-11%	-9%	2%	-5%	-3%	-1%	-4%	-6%	-4%	-6%			27	-5%
---------------	------	-----	----	-----	-----	-----	-----	-----	-----	-----	--	--	----	-----

Circulation Activity

Wellington County Library Total Circulation of Materials by Year



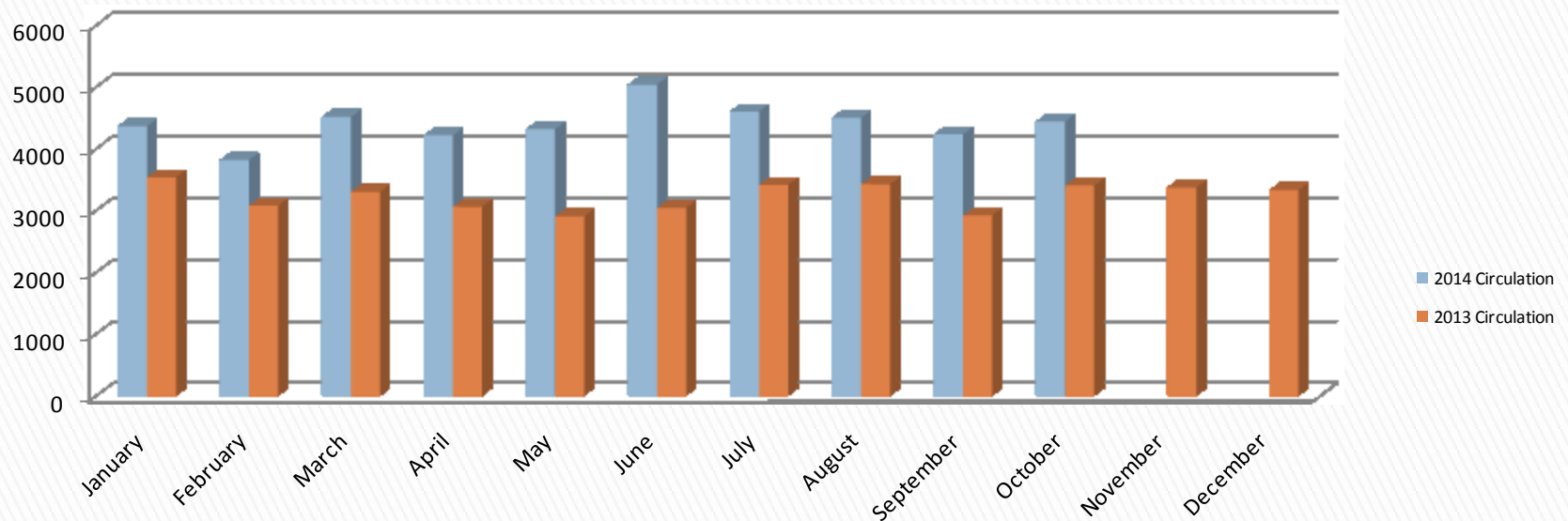
Circulation
Count



Monthly Circulation by Year

eBook Circulation Activity

eBook Circulation by Month*



*includes eBooks, eAudiobooks, eVideo and eMusic circulation from OverDrive.

Website Statistics

October 2014

Top Pages Visited

Library Home Page	6,794
Online Resources	1,963
eBooks and More	1,928
Borrowing	1,405
Branch Locations	531

Our website was accessed in a variety of ways including 1,345 visits from tablets and 1,269 from Mobile Devices.

Mobile devices include Apple iPad, Apple iPhone, Google Nexus 4, Blackberry Playbook and Blackberry 9900 Dakota.

Visits to Library Website

# of total visits	8,213
# of pages viewed	17,688

Location of people accessing our website:

Canada, U.S., U.K., Malaysia, Germany, South Africa and Bermuda.

The majority of visitors were within Ontario:

Guelph, Fergus, Toronto, Orangeville, Minto, Waterloo and Clifford.

Of the visitors 70% were returning and 30% were new visitors to our website.

Programming Report

October 2014

BRANCH	TOTAL NUMBER OF PROGRAMMES OFFERED	ATTENDEES			
		CHILDREN/ TEENS	PARENTS/ CAREGIVERS	ADULTS	
ABOYNE	17	161	120	17	
ARTHUR	23	123	136	25	
CLIFFORD	16	73	48	5	
DRAYTON	30	494	168	4	
ELORA	13	129	58	11	
ERIN	19	168	72	24	
FERGUS	14	109	67	39	
HARRISTON	24	274	79	74	
HILLSBURGH	20	102	65	50	
MARDEN	17	47	37	33	
MT FOREST	25	149	61	71	
PALMERSTON	18	194	110	14	
PUSLINCH	11	62	50	42	
ROCKWOOD	14	100	37	18	
TOTALS	261	2185	1108	427	3720
					Total Participants

October 2013

BRANCH	TOTAL NUMBER OF PROGRAMMES OFFERED	ATTENDEES			
		CHILDREN/ TEENS	PARENTS/ CAREGIVERS	ADULTS	
ABOYNE	13	111	75	52	
ARTHUR	13	112	77	32	
CLIFFORD	14	67	41	3	
DRAYTON	36	374	140	18	
ELORA	9	61	25	37	
ERIN	19	131	46	26	
FERGUS	22	278	104	33	
HARRISTON	24	167	54	43	
HILLSBURGH	15	76	49	53	
MARDEN	13	121	28	16	
MT FOREST	19	171	29	83	
PALMERSTON	15	103	95	29	
PUSLINCH	20	76	49	57	
ROCKWOOD	19	158	59	16	
TOTALS	251	2006	871	498	3375
					Total Participants

November 3, 2014

Libraries lend a hand to development

By JOSH O'KANE

Dynamic new libraries in Calgary, Halifax and other cities act as magnets to attract density to city cores

In a city often focused on history, it is a glistening monument to the future: Halifax's new central library¹, set to open on Spring Garden Road by the end of the year, is no ode to the paper books of libraries past.

It's designed to be a gathering place, a learning space and an innovation centre. What will happen inside the building, though, may have less of an impact on the city than what happens around it. The Halifax Regional Municipality is consciously using the \$57.6-million library² to attract development along Spring Garden's bustling retail corridor.

The costs of the branch are covered, in part, by the sale of three adjacent parking lots to private developers, who in turn are building new mid-rise, mixed-use projects in the area, bringing much-needed density to the city's core.

The library is crucial infrastructure needed to bring Halifax into the 21st century, says Wadih Fares³, who, on top of developing two of those parking lots, just announced a \$100,000 donation to the branch. Mr. Fares sees it as a stimulus for downtown growth, likening it to the first spark in a fireplace: "It will ignite the whole fire."

Consumers are moving to e-books in droves, but the death of the conventional library may be greatly exaggerated. The dissemination of information no longer requires a printing press, but it remains a core component of democracy. Cities across Canada are building new libraries with a focus on broader learning and community building – and they're being financed in ways that complement and encourage nearby development. Those branches are paying their cities back in spades, bringing in greater density and community engagement.

In Halifax, Mr. Fares's donation will help pay for a community space within the library, which was built by Danish architects Schmidt Hammer Lassen with local partner Fowler, Bauld & Mitchell. Mr. Fares, who emigrated from Lebanon to Halifax in the 1980s, wants people to live and play downtown in the city that has supported his life and career. "The more community places you have, the more modern, 21st-century buildings that go up, it attracts people to that area," he says.

Paula Saulnier, interim chief executive officer of Halifax Public Libraries, says "any city that invests in their libraries makes a commitment to learning, to culture and democracy." That, in turn, brings people: "We're going to see this as a catalyst to encourage people to live and work in the downtown."

Two of the nearby parking lots have been sold, bringing in nearly \$14-million to cover municipal costs of the project, with up to \$10-million expected from the third, says Peter Stickings, the HRM's manager of corporate real estate.

New libraries are increasingly being seen as community focal points. Ottawa Mayor Jim Watson called a new central branch an "important community asset"⁴ when campaigning for re-election in October. A planned branch on Vancouver's East Hastings Street, meanwhile, is part of a joint project⁵ with YWCA Metro Vancouver that will include affordable housing for low-income single mothers and their children.

In Calgary, a \$245-million new central library⁶ has been announced for the city's East Village, which is undergoing a multi-decade, 49-acre brownfield redevelopment project to transform it from neglected neighbourhood to family-friendly community. By the time the East Village is fully developed, more than 11,000 people are expected to call it home. The curved, glass downtown library, perched on top of a light-rail transit line, is set to open in 2018.

"We consider the library an educational anchor to the development" of the East Village, says Susan Veres, vice-president of marketing for the Calgary Municipal Land Corp. (CMLC), which was created by the city in 2007 to redevelop the neighbourhood.

When the East Village site was chosen for the new library, the CMLC committed \$70-million to the project from its community revitalization levy, a pot of money the corporation sets aside for infrastructure improvements. Rather than add a development levy to existing property taxes, CMLC struck a 20-year tax-incremental financing deal with the city to funnel income from new development into specific projects to improve the community, adding amenities to encourage further development.

So far the fund has invested \$345-million into public improvements in the East Village, Ms. Veres says. Though much of the land is already scooped up by developers, "I think [the new library will] affect people choosing to live here," she says. "The neighbourhood had a bad personality, and now that personality is changing favourably."

"I'm really proud that the library is the linchpin for all that," says Bill Ptacek, CEO of the Calgary Public Library. The Calgary system is aiming to double its membership in the near future as it makes its library cards free and beefs up its programs. The strategy includes, as reading goes electronic, getting rid of some of those pesky physical books. "We're trying to take up less space in our community library to make more space for people."

Calgary isn't the only city where a whole new downtown community is popping up. The former railway lands along Toronto's waterfront have turned into a sprawling community of condo towers that, until this year, was without a library. When planning the community, the city decided to apply a per-unit levy to developers building in the area to fund public services like a school, community centre and library.

The levies are charged to developers as soon as they apply for building permits. The original indexed library levy, set in 1994, was set at \$277 per unit, but rose to \$400 by 2008. This funded half – \$4.6-million – of the cost of the new Fort York branch, which opened in May.

This wasn't the only bonus the branch scored from private development. The developer Context, whose Library District condos are adjacent to the library, donated \$500,000 for the branch's public art installation⁷, a collaboration between visual artist Charles Pachter based on Margaret Atwood's poetry collection *The Journals of Susanna Moodie*⁸.

"I think it's been a really successful way, from the city's perspective, to deliver a complete neighbourhood," says Toronto planner Lynda Macdonald, who oversees that community. "We think the new library is fabulous and the community loves it."

Anne Bailey, Toronto's acting city librarian, says the new branch is an important step for the growing community. "Through the glass and openness of the facility, it declares to the neighbourhood that it's here, it's open and it's available for everyone."

References

1. www.halifaxcentrallibrary.ca
2. www.theglobeandmail.com/news/national/halifax-looks-forward-to-the-opening-of-its-very-own-library-of-the-future/article20090514
3. www.wmfares.com/#!wadih/c10fk
4. www.jimwatson.ca/watson_supports_partnership_for_new_central_library
5. www.vpl.ca/news/details/faq_vpl_branch_and_ywca_housing
6. www.calgarymlc.ca/explore-projects/new-central-library
7. www.theglobeandmail.com/news/toronto/fort-york-branch-a-rebuke-to-the-fords-and-much-more/article18919099
8. www.torontopubliclibrary.ca/search.jsp?ntt=the+journals+of+susanna+moodie&n=4294950767

The Globe and Mail, Inc.




The Globe and Mail Inc. All Rights Reserved.. Permission granted for up to 5 copies. All rights reserved.

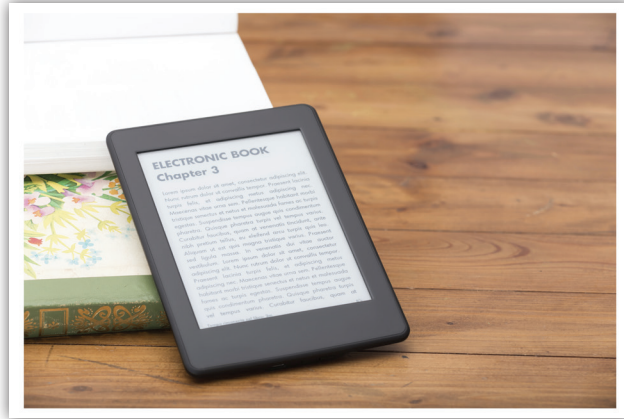
You may forward this article or get additional permissions by typing http://license.icopyright.net/3.8425?icx_id=21428477 into any web browser. The Globe and Mail, Inc. and The Globe and Mail logos are registered trademarks of The Globe and Mail, Inc. The iCopyright logo is a registered trademark of iCopyright, Inc.

The OverDrive times, they are a-changin'... for the better! If you're a regular user of our library eBooks through the OverDrive service, you may have noticed some great things have been happening lately.

Changes to the Holds system:

- Suspend your holds – if you know you've got five books coming available around the same time, or if you're going to be out of downloading range, you can keep your place in line and make sure that the book will be ready for you, when you're ready for it. Ask staff for further questions or help.
 - Automatic holds checkouts – you still get an email, but you won't have that disappointment of losing access to the book you forgot to checkout. This is an option that can be turned off when holds are placed, or from the Holds page of your account.
- 
- A photograph showing a black tablet resting on a wooden surface. The tablet screen displays a list of books with titles and authors. To the left of the tablet, the spine of a physical book with a green cover and gold lettering is visible.

OverDrive Accounts will replace Adobe ID authentication on mobile devices, so if you're getting OverDrive Media Console for the first time on your tablet or smartphone, you'll find the registration process smoother and less confusing. This change doesn't affect people who are already using OverDrive Media Console or people using computers or eReaders to access their eBooks.



Long Service Awards

On Friday, September 26 the County of Wellington recognized and celebrated their long service employees. Several members of the library staff were included.

Staff recognized for 10 years of service included Sheri Cockerill, Pat Kermath, Evelyn Lee, Janine Morin and Penny Presswood. Brooke McLean was recognized for 15 years of service and Deanna Stevens and Bep Vandenberg for 20 years. Elaine Salter was acknowledged for 25 years of service. Janet Degenais and Bonnie Moebus, recent retirees from the County were also honoured. Linda Hornick was recognized for 30 years of service and was congratulated on her recent retirement.



Wellington County Library
552 Wellington Rd 18, RR 1, Fergus ON N1M2W3
519.846.0918 • www.wellington.ca/Library



ALTERNATE FORMATS AVAILABLE UPON REQUEST.

Wellington County Library Introduces New Parent Packages

The Wellington County Library has partnered with the Wellington Dufferin Guelph Public Health Team and is pleased to introduce our 'New Parent Packages' for parents or guardians of a newborn of 0 - 6 months of age. The package includes:

- Every Child Ready to Read Brochure (Library)
- A Board Book (Library)
- A pamphlet of 14 library branches and their hours (Library)
- The Next Chapter Library Newsletter (Library)
- Oral Health Booklet (Public Health)
- Public Health Business Card (Public Health)
- Growing Great Kids Brochure (Public Health)



The goal of this initiative is to distribute information on the early literacy and public health services available within the community. Parents and guardians of a newborn 0 – 6 months of age can register with staff to receive this informative package.

We also offer Baby Time programmes for parents with infants ages 0 - 12 months. Please visit our website www.wellington.ca/Library for programme details or ask library staff.

Please check your local branch for availability.

“There is not such a cradle of democracy upon the earth as the Free Public Library, this republic of letters, where neither rank, office, nor wealth receives the slightest consideration.” Andrew Carnegie



All Wellington County Library branches will be closed Tuesday, November 11 for Remembrance Day. Branches open on Mondays will open at 2:00 pm on Monday, November 24.

What's Inside:

Staff Review: Brave New Quilts	Page 2
Books on Disc	Page 2
Quilting Bee programme at Drayton Branch	Page 2
November Programme Highlights	Page 3
eBook Insider	Page 4
Long Service Awards	Page 4

Winter Weather

In case of inclement weather please call ahead. During stormy weather it is a good idea to call your branch to ensure that programmes will run. The library branch phone numbers can be found online at www.wellington.ca/Library.



Brave New Quilts

By: Kathreen Ricketson
Reviewer: Jennifer McCready
Elora Branch



This quilting book will take you places you've never been before! With great foundational techniques around colour and design principles, it provides you with all the skills to be able to design your own quilts in a way that other books do not.

Kathreen is not just riffing on the 'traditional' blocks that many modern quilters do- she is inventing whole new concepts based on art. Each of the twelve quilts presented in this book is an homage to a different artistic 'period' of twentieth Century Art such as Bauhaus, or Art Decoration; an interesting concept that leads to wonderful modern quilts.

While I wouldn't necessarily want to make exact replicas of her quilts, I did feel inspired by this book in a new way. The discussion of colour and design principles felt refreshing and new and her recommendations for how to make each of 'her' designs into your own are detailed and clearly stated. Sadly, Kathreen Ricketson died tragically just after finishing this book, so there won't be more quilts or books being produced by her. But she did herself proud with this first book.

Quilting Bee programme at Drayton Branch



In September, Drayton Branch launched their Quilting Bee programme, which involved seven ladies working together to complete an entire quilt.

The finished quilt is on display at the branch for everyone to see, and will be donated to a third world country for bedding.

To register to participate in this programme please call the Drayton Branch at 519.638.3788.

Books on Disc

Are you looking for a new book on disc title? Here is a list of our recently arrived books on discs.

- The Iron Trial (juvenile fiction) by Holly Black
- Flashpoint (juvenile fiction) by Gordon Korman
- Winter Sky (juvenile fiction) by Patricia Reilly Giff
- The Forbidden Stone (juvenile fiction) by Tony Abbott
- Zero to one: notes on startups, or how to build the future (adult non-fiction) by Peter A. Thiel
- A path appears: transforming lives, creating opportunity (adult non-fiction) by Nicholas D. Kristof
- Living courageously: you can face anything, just do it afraid (adult non-fiction) by Joyce Meyer
- The story of land and sea (adult non-fiction) by Katy Simpson Smith
- Rose Gold (adult fiction) by Walter Mosley
- The Marco effect (adult fiction) by Jussi Adler-Olsen

Please check your local branch for availability.



November Programme Highlights

Kids Programmes

Free Family Movie Night: Muppets Most Wanted (all ages)

Bring a pillow and pyjamas and join us for free popcorn and a movie! Featuring Muppets Most Wanted. Rated PG. Please register.

[Marden Branch 519.763.7445](#)

Thursday, November 13 6:00 - 8:00 pm

A-"Mazing" P.A. Day at the library (Grades K- 6)

Drop into the Hillsburgh Branch during open hours to try out our mazes from small to life-size.

[Hillsburgh Branch 519.855.4010](#)

Friday, November 21 2:00 - 4:30 pm

PA Day: Lego Challenge (all ages)

The Challenge is on! Bring a friend to the library and create a Lego masterpiece!

[Palmerston Branch 519.343.2142](#)

Friday, November 21 2:00 - 6:00 pm



Teen Programmes

Teen Book Club

Join us as we discuss a variety of teen fiction. Please register.

[Arthur Branch 519.848.3999](#)

Thursday, November 27 4:00 - 5:00 pm

Page Turners Book Club

Join our teen book club as a discuss a variety of teen fiction. Please register.

[Drayton Branch 519.638.3788](#)

Friday, November 7 and 28 4:00 - 4:45 pm

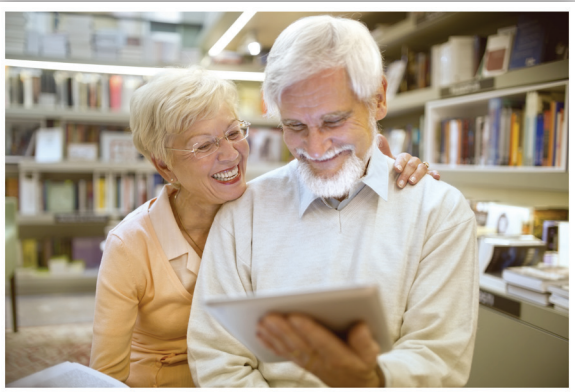
Adult Programmes

eBook Workshop

Join us at our eBook workshop to learn more about using our online OverDrive eBook collection! We will be discussing how to get started with your eReader, how to find and check out books, and where to go for more help. Everyone welcome. Please register.

[Aboyne Branch 519.846.0918](#)

Tuesday, November 18 2:00 pm



Movie Night for Adults

Join us for a movie and discussion. Showing Patch Adams in partnership with the H.O.P.E. Committee. Rated G. Please register.

[Mount Forest Branch 519.323.4541](#)

Thursday, November 13 6:00 pm

Scrabble Club for Adults

Join us for an afternoon of casual word building entertainment! No experience necessary. Please register.

[Puslinch Branch 519.763.8026](#)

Wednesday, November 12 and 26 2:00 - 4:00 pm

[Elora Branch 519.846.0190](#)

Monday, November 3, 10, 17 and 24 2:00 - 4:00 pm

Evening Book Club

Join us as we discuss "Mount Pleasant" by Don Gillmor.

[Clifford Branch 519.327.8328](#)

Wednesday, November 12 6:45 - 8:00 pm



IN FLANDERS FIELDS

In Flanders fields the poppies blow
Between the crosses, row on row,
That mark our place; and in the sky
The larks, still bravely singing, fly
Scarce heard amid the guns below.

We are the Dead. Short days ago
We lived, felt dawn, saw sunset glow,
Loved and were loved, and now we lie
In Flanders fields.

Take up our quarrel with the foe:
To you from failing hands we throw
The torch; be yours to hold it high.
If ye break faith with us who die
We shall not sleep, though poppies grow
In Flanders fields.

Lieutenant Colonel John McCrae, 1915