



# **The Corporation of the County of Wellington**

## **Police Services Board**

### **Agenda**

October 8, 2014

9:00 am

County Administration Centre

Guthrie Room

Members: Warden Chris White; Councillor Ray Tout, Russ Spicer (Chair), Kent Smith, Jeremy Vink

---

Pages

1. **Call to Order**
2. **Declaration of Pecuniary Interest**
3. **Minutes for Approval** 2 - 6  
September 10, 2014
4. **2015 Municipal OPP Policing Billing Statement** 7 - 35
5. **Financial Statements and Variance Projections as of September 30, 2014** 36 - 39
6. **Detachment Commander's Report - September 2014** 40 - 54
7. **Speed Spy Unit Overview - Verbal**
8. **September 2014 Parking Ticket Report** 55 - 55
9. **October 2014 False Alarm Revenue Report** 56 - 56
10. **Closed Meeting**  
(Agenda emailed under separate cover)
11. **Rise and Report**
12. **Adjournment**  
Next meeting date November 12, 2014 or at the call of the Chair.



## **Corporation of the County of Wellington Police Services Board Minutes**

September 10, 2014  
County Administration Centre  
Guthrie Room

**Present:** Warden Chris White  
Councillor Raymond Tout  
Russ Spicer (Chair)  
Jeremy Vink  
Kent Smith

**Staff:** Donna Bryce, County Clerk  
Ken DeHart, County Treasurer  
Kelly-Ann Wingate, Parking Licence and Alarm Coordinator  
Scott Wilson, Board Secretary

**Also Present:** Detachment Commander, Inspector Scott Lawson  
Vicky Dawson, Staff Sergeant, Wellington County OPP  
Krista Miller, Staff Sergeant

---

### **1. Call to Order**

At 9:00 am, the Chair called the meeting to order.

### **2. Declaration of Pecuniary Interest**

There were no declarations of pecuniary interest.

### **3. Delegation:**

#### **3.1. Children's Safety Village Presentation**

Mr. Al Leach, Vice President, Saugeen Valley Children's Safety Village, spoke to the Board on the steps involved in the concept, start up and fundraising to create a Safety Village.

**4. Minutes for Approval**

1/7/14

**Moved by:** Councillor Tout

**Seconded by:** Warden White

That the Minutes of the June 11, 2014 meeting of the Wellington County Police Services Board be adopted.

**Carried**

**5. Financial Statements as of August 31, 2014**

2/7/14

**Moved by:** Warden White

**Seconded by:** Jeremy Vink

That the Financial Statements as of August 31, 2014 be approved.

**Carried**

**6. OPP Billing Model Presentation**

3/7/14

**Moved by:** Councillor Tout

**Seconded by:** Jeremy Vink

That the New OPP Billing Model presentation be received for information.

**Carried**

**7. Detachment Commander's Reports**

**7.1. June, July and August 2014**

4/7/14

**Moved by:** Councillor Tout

**Seconded by:** Jeremy Vink

That the Detachment Commander's Reports for June, July and August 2014 be received for information.

**Carried**

5/7/14

**Moved by:** Warden White

**Seconded by:** Councillor Tout

That two Livescan Fingerprinting devices be purchased for use at the South Wellington (Rockwood) Operations Centre and North Wellington (Teviotdale) Operations Centre in the amount up to \$60,000.

**Carried**

**8. Parking Ticket Reports - June, July and August 2014**

6/7/14

**Moved by:** Councillor Tout

**Seconded by:** Kent Smith

That the June, July and August 2014 Parking Ticket Reports be received for information.

**Carried**

**9. September 2014 False Alarm Revenue Report**

7/7/14

**Moved by:** Warden White

**Seconded by:** Councillor Tout

That the September 2014 False Alarm Revenue Report be received for information.

**Carried**

**10. Community Safety Zone Request on Eliza St., Arthur**

8/7/14

**Moved by:** Jeremy Vink

**Seconded by:** Warden White

That the following recommendation from the September 2014 Roads Committee be supported by the Police Services Board:

That a letter of response be sent to Mr. & Mrs. Cotton indicating that their concerns will be forwarded to the Wellington County OPP for their periodic monitoring of the area;  
and

That in the absence of this area being considered a proven and persistent problem area, the use of a Community Safety Zone is not anticipated at this time.

**Carried**

**11. OPP Auction Update - Verbal**

Ms. Kelly- Ann Wingate, Parking, Licensing and Alarm Coordinator advised the Board that \$1268.00 was raised for Wellington County Crimestoppers at the June 14, 2014 OPP Auction.

**12. Closed Meeting**

9/7/14

**Moved by:** Jeremy Vink

**Seconded by:** Warden White

That the Police Services Board move into a closed meeting for the purpose of considering intimate financial or personal matters or other matters that may be disclosed of such a nature, having regard to the circumstances, that the desirability of avoiding their disclosure in the interest of any person affected or in the public interest outweighs the desirability of adhering to the principle that proceedings be open to the public.

**Carried**

**13. Rise and Report**

10/7/14

**Moved by:** Warden White

**Seconded by:** Councillor Tout

That the Wellington County Police Services Board rise and report from the closed meeting.

**Carried**

**14. Adjournment**

At 11:25 am, the Chair adjourned the meeting until October 8, 2014 or at the call of the Chair.

---

Russ Spicer  
Chair  
Police Services Board

Ontario  
Provincial  
Police

Police  
provinciale  
de l'Ontario



**Municipal Policing Bureau**  
**Bureau des services policiers des municipalités**

777 Memorial Ave.  
Orillia ON L3V 7V3

777, ave Memorial  
Orillia (ON) L3V 7V3

Tel: (705) 329-6200

Fax: (705) 330-4191

File number/Référence: 511-6232

September 29, 2014

CAO, Mr. Scott Wilson  
County of Wellington  
74 Woolwich Street  
Guelph, ON N1H 3T9

Dear Sir/Madame:

**Re: 2015 Municipal Policing Billing Statement – Ontario Provincial Police (OPP)**

Please find attached the 2015 Billing Statement and accompanying summaries for the The Township of Guelph/Eramosa. The Statement has been prepared in accordance with a revised municipal policing cost-recovery billing methodology approved by Treasury Board/Management Board of Cabinet on August 13, 2014.

Please find enclosed the following documents:

1. OPP Annual Billing Statements for the period January 1 to December 31, 2015
  - Statement excluding any existing contracted enhancements.
  - Statement including existing contracted enhancements, (if applicable).
2. Notes to 2015 OPP Municipal Policing Annual Billing Statement
3. OPP Total Municipal Base Service and Calls for Service Cost Summary
4. Calls For Service Billing Summary
5. Contract Enhancements Cost Summary, (if applicable)
6. Court Security Cost Summary, (if applicable)
7. Calls for Service Details (2010 to 2013)
8. 2015 OPP Municipal Policing Billing General Information
9. Property Count Definition
10. 2014 OPP Municipal Policing Cost-Recovery Formula Comparison

The OPP Municipal Policing Cost-Recovery Formula continues to be an integral part of the cost recovery process. The costing formula applied to municipal policing costs has been subjected to the regularly scheduled annual review. The 2014 Cost-Recovery Formula has been integrated into the 2015 Billing Statement costs.

Municipalities will be billed monthly consistent with the current billing process. Please note, that interest will be charged on overdue accounts and it is applied retroactively to outstanding balances.

Please be advised that a Municipal Policing Bureau Contract Analyst will be contacting municipal officials within the next few weeks to discuss possible future policing services contract arrangements and billing options for 2015.

The information provided in this package is intended to provide an explanation of the revised billing methodology and the specific costs recovered from the municipality. Additional information about the revised billing model is available online at <http://www.opp.ca/ecms/index.php?id=13>. Questions or concerns that have not been addressed in the information package or online should be directed to Linda Davis, Municipal Policing Bureau Contract Analyst, at [Linda.Davis@opp.ca](mailto:Linda.Davis@opp.ca) or 705-329-6289.

We would like to take this opportunity to advise the municipality that due to the workload demands of preparing the municipal billing statement packages the completion of the semi-annual reconciliation has been delayed. We expect to have the reconciliations completed prior to the end of October.

Yours truly,



R.A. (Rick) Philbin  
Superintendent  
Commander  
Municipal Policing Bureau

Attachments

c: Chair, Guelph/Eramosa Police Services Board  
Detachment Commander, Wellington County OPP  
ec: Commander, West Region

# O.P.P. Annual Billing Statement

Wellington Co

For the period January 1 to December 31, 2015

Please see attachments for notes and additional information

			Cost per Property	\$
<b>Base Service</b>				
	<u>Property Counts</u>			
	Household	35,521		
	Commercial and Industrial	<u>2,100</u>		
	Total properties	<u>37,621</u>	\$ 200.51	\$ 7,543,387
<b>Calls for Service</b>				
	(see summaries)			
	Total all municipalities	\$138,122,392		
	Municipal portion	3.0456%	\$ 111.82	\$ 4,206,649
<b>Overtime</b>				
	(see notes)		\$ 8.69	\$ 327,012
<b>Contract Enhancements</b>				
<b>Court Security</b>				
	(see summary)			
<b>Prisoner Transportation</b>				
	(per property cost)		\$ 2.41	\$ 90,667
<b>Accommodation</b>				
	(per property cost)			
<b>Cleaning Services</b>				
	(per property cost)			
<b>Total 2015 Calculated Cost before Phase-In Adjustment</b>			<b>\$ 323.43</b>	<b>\$ 12,167,715</b>
<b>2015 Phase-In Adjustment Billing Summary</b>				
<b>2014 Forecasted cost</b>				
	Total	\$ 17,555,158	\$ 466.63	
<b>2015 Calculated Cost per Property (see above)</b>			\$ 323.43	
<b>Cost per Property Variance</b>			(Decrease) \$ 143.20	
<b>2015 Adjustment (Maximum per property)</b>			(Decrease) \$ 30.00	
<b>Actual 2015 Phase-In Adjustment</b>			\$ 113.20	\$ 4,258,697
<b>Total Billing for 2015</b>			<b>\$ 436.63</b>	<b>\$ 16,426,412</b>
<b>2015 Monthly Billing Amount</b>				<b>\$ 1,368,871</b>

# O.P.P. Annual Billing Statement

Wellington Co

For the period January 1 to December 31, 2015

Please see attachments for notes and additional information

			Cost per Property	\$
<b>Base Service</b>				
	<u>Property Counts</u>			
	Household	35,521		
	Commercial and Industrial	<u>2,100</u>		
	Total properties	<u>37,621</u>	\$ 200.51	\$ 7,543,387
<b>Calls for Service</b>				
	(see summaries)			
	Total all municipalities	\$138,122,392		
	Municipal portion	3.0456%	\$ 111.82	\$ 4,206,649
<b>Overtime</b>	(see notes)		\$ 8.60	\$ 327,012
<b>Contract Enhancements</b>	(see summary)		\$ 83.94	\$ 3,157,993
<b>Court Security</b>	(see summary)			
<b>Prisoner Transportation</b>	(per property cost)		\$ 2.41	\$ 90,667
<b>Accommodation</b>	(per property cost)			
<b>Cleaning Services</b>	(per property cost)			
<b>Total 2015 Calculated Cost before Phase-In Adjustment</b>			<b>\$ 407.37</b>	<b>\$ 15,325,708</b>
<b>2015 Phase-In Adjustment Billing Summary</b>				
<b>2014 Forecasted cost</b>	Total	\$ 17,555,158	\$ 466.63	
<b>2015 Calculated Cost per Property (see above)</b>			\$ 407.37	
<b>Cost per Property Variance</b>	(Decrease)		\$ 59.26	
<b>2015 Adjustment (Maximum per property)</b>	(Decrease)		\$ 30.00	
<b>Actual 2015 Phase-In Adjustment</b>			\$ 29.26	\$ 1,100,790
<b>Total Billing for 2015</b>			<b>\$ 436.63</b>	<b>\$ 16,426,498</b>
<b>2015 Monthly Billing Amount</b>				<b>\$ 1,368,875</b>

## **Notes to 2015 OPP Municipal Cost Recovery Billing**

### **Municipal Base Service and Calls for Service Costs**

The Base Service and Calls for Service costs are calculated costs of OPP members providing municipal policing services. The costs are determined based on the staffing in detachments and the municipal policing activities performed. Statistical analysis of activity in all detachments is used to determine the municipal policing workload allocation of all detachment-based staff as well as the allocation of the municipal workload between base services and calls for service activity. For 2015 billing purposes the allocation of the municipal workload has been calculated to be 60.1% Base Service and 39.9% Calls for Service. Please refer to *Base Service and Calls for Service Cost Summary* for the total municipal Base Service and Calls for Service 2015 cost calculation.

### **Base Service**

The Base Service costs represent municipal costs related to proactive policing services such as routine patrols, crime prevention, RIDE programs, training, administration, etc. The cost to each municipality is determined by the number of properties in the municipality and the standard province-wide average cost per property. The number of municipal properties is determined based on MPAC data; please refer to the property count definition attached, *Property Count Definition: OPP Municipal Policing Billing Model*. The calculation of the standard province-wide base cost per property is detailed on *Base Service and Calls for Service Cost Summary*.

### **Calls for Service**

The Calls for Service costs represent the municipal costs related to policing services that are typically reactive in nature and usually require a police officer's attendance. A municipality pays a proportionate share of the total cost of municipal calls for service costs calculated for the province. A municipality's proportionate share of the costs is based on weighted time standards applied to the historical calls for service. The municipality's total weighted time is calculated as a percentage of the total of all municipalities.

### **Overtime**

Municipalities are billed for overtime resulting from occurrences in their geographic area and a portion of overtime that is not linked specifically to a municipality, such as training. Municipalities are not charged for overtime identified as a provincial responsibility. The overtime activity for the calendar years 2012 and 2013 has been analyzed, applying the revised billing methodology, and averaged to forecast the 2015 costs. The costs incorporate the estimated 2015 salary rates and a discount to reflect overtime paid as time in lieu. The overtime costs incurred in servicing detachments for shift shortages have been allocated on a per property basis based on straight time.

## **Court Security**

Municipalities with court security responsibilities in local courthouses have been billed court security costs based on the cost of the staff in the servicing detachment required to provide designated court security activities. 2015 costs have been based on 2013 security activity and security requirements specified by detachment staff.

## **Prisoner Transportation**

Prisoner Transport costs have been allocated to municipalities on a per property basis. The total estimated cost of municipal detachment staff providing prisoner transport services across the province has been calculated based on 2013 activities. The standard per property cost was calculated using the total of all OPP-policed municipal properties.

## **Accommodation**

The municipal portion of the cost of provincially-owned detachment facilities has been allocated to municipalities on a per property basis. A standard province-wide rate has been set based on the total calculated municipal detachment costs and the property counts of municipalities requiring detachment facilities. The municipal detachment costs are based on the number of municipal officers and the per officer cost set in the 2014 Municipal Policing Cost-Recovery Formula.

## **Cleaning Services**

Cleaning costs have been allocated to municipalities on a per property basis. The cost of the municipal portion of detachment caretakers and cleaning service contracts has been calculated and prorated based on the property counts of municipalities requiring these services.

## **Phase-in Adjustment**

The municipal cost impacts of the revised municipal billing model will be phased in over a period of five years, 2015 to 2019. The 2015 phase-in adjustment is based on the comparison of the 2015 calculated cost per property to the 2014 forecasted cost per property. See the table below for 2015 phase-in adjustment details.

<b>2015 vs. 2014 Cost per Property</b>	<b>Phase-in cap applied</b>	<b># of Municipalities</b>
Increase greater than \$40	Maximum \$40 increase	172
0 to \$40 Increase	n/a	34
Decrease up to \$30	n/a	23
Decrease greater than \$30	Maximum \$30 decrease	95

## **2014 Forecasted Municipal Policing Costs**

For 2015 billing purposes the Municipal Policing Bureau has forecasted 2014 costs by municipality. The issued 2014 Estimated Policing Costs were adjusted for recently observed costing trends and anticipated final cost adjustment. These forecasted costs were required to estimate the 2015 vs 2014 municipal cost impacts resulting from the revised billing model and determination of phase-in adjustments required.

**Calls For Service Billing Summary**  
**For the Period January 1 to December 31, 2015**

Calls for Service Billing Workgroups	Calls for Service Count					2015	Total Weighted Time	% of Total Provincial Weighted Time	2015 Estimated Calls for Service Cost
	2010	2011	2012	2013	Four Year Average	Average Time Standard			
					A	B			
							C = A * B		
					(Note 1)			(Note 2)	(Note 3)

**Wellington County**

Drugs	60	42	51	58	53	31.8	1,677	0.1044%	\$ 144,185
Drugs Possession	197	218	305	334	264	6.0	1,581	0.0984%	\$ 135,896
Operational	4,828	4,189	4,541	4,846	4,601	3.4	15,643	0.9735%	\$ 1,344,629
Operational 2	2,686	3,547	3,839	3,526	3,400	1.2	4,079	0.2539%	\$ 350,643
Other Criminal Code Violations	327	262	324	269	296	7.0	2,069	0.1287%	\$ 177,798
Property Crime Violations	1,723	1,527	1,719	1,613	1,646	6.1	10,038	0.6246%	\$ 862,778
Statutes & Acts	666	602	721	745	684	3.0	2,051	0.1276%	\$ 176,251
Traffic	1,199	1,339	1,249	1,461	1,312	3.3	4,330	0.2694%	\$ 372,151
Violent Criminal Code	475	533	625	472	526	14.2	7,473	0.4650%	\$ 642,319
<b>Total</b>	<b>12,161</b>	<b>12,259</b>	<b>13,374</b>	<b>13,324</b>	<b>12,780</b>		<b>48,940</b>	<b>3.0456%</b>	<b>\$ 4,206,650</b>

<b>Provincial Totals</b>					<b>397,681</b>		<b>1,606,916</b>	<b>100%</b>	<b>\$ 138,122,392</b>
--------------------------	--	--	--	--	----------------	--	------------------	-------------	-----------------------

Note 1) Average is displayed without decimals. For billing purposes the calculated average has been applied.

Note 2) Percentage is displayed to four decimal places. Final cost calculations are based on percentages rounded to seven decimal places.

Note 3) Costs rounded to 0 decimals

**Calls for Service Billing Workgroup Descriptions**

**Drugs**

Includes trafficking, production, and importation of drugs including marihuana, cocaine, heroin, crystal meth or other controlled substances. It also includes occurrences related to indoor/outdoor grow labs.

**Drug Possession**

Includes all occurrences where the most serious violation is possession of marihuana, cocaine, heroin, crystal meth or other controlled substance. It also includes other minor drug related offences.

**Operational**

Operational calls for service are non-criminal events that police attend to. These include animal complaints, non-criminal domestic disturbances, missing persons, noise complaints, property – lost or found, sudden deaths, and assist public calls.

**Operational 2**

Includes false alarms, keep the peace and 911 calls/911 hang-ups. Due to the higher frequency of these calls, they have been separated out from the 'Operational' category and allocated a lower time standard. Traffic incidents are excluded.

## **Calls for Service Billing Workgroup Description (continued)**

### **Other Criminal Code Violations**

The majority of offences counted in the Other Criminal Code Offences group are criminal offences that are not directed to people or related to property. It is similar to the group that Statistics Canada uses when reporting 'Other Criminal Code'. These include prostitution, offensive weapons, bail violations, counterfeiting, disturb the peace, indecent acts, breach of probation, and bribery.

### **Property Crime Violations**

This category is similar to the group that Statistics Canada uses when reporting 'Property Crimes'. These include arson, break and enter, theft, possession of stolen goods, mischief, identity theft, and some frauds.

### **Statutes & Acts**

Includes provincial statutes, primarily the Mental Health Act, Landlord Tenant Act and Trespass to property offences. It also includes custody dispute calls.

### **Traffic**

Includes motor vehicle collisions of all severities (property damage, personal injury and fatalities) and road rage incidents reported to police.

### **Violent Crimes**

The majority of offences counted in the Violent Crimes group are crimes against persons. This category is similar to the group that Statistics Canada uses when reporting 'Violent Crimes'. These include homicides, attempted murders, assaults, threats and robberies.

### **Security Detail (if applicable)**

There currently are no Niche violation codes that map to this work group.

## O.P.P. CONTRACT ENHANCEMENT COST SUMMARY

Billed Policing Costs for the period

January 01, 2015 to December 31, 2015

Wellington Co

2014 Cost-Recovery Formula  
Costs Adjusted on an Annual Basis**Salaries and Benefits**

Uniform Members	(Note 1)	Positions	\$	
Inspector .....		-	-	
Staff Sergeant-Detachment Commander .....		-	-	
Staff Sergeant .....		2.00	243,548	
Sergeant .....		1.00	109,512	
Constables .....		16.00	1,474,528	
Part-Time Constables .....		-	-	
Total Uniform Salaries .....				1,827,588
Contractual Payout (Vacation & Statutory Holidays) .....				71,212
Shift Premiums .....				11,526
Benefits (27.34% of Salaries) .....				499,663
<b>Total Uniform Salaries &amp; Benefits</b> .....				<b>2,409,989</b>

Detachment Civilian Members	(Note 1)	Positions	\$	
Court Officer .....	Full-time	-	-	
Court Officer .....	Part-time	-	-	
Detachment Administrative Clerk .....	Full-time	1.00	61,082	
Detachment Administrative Clerk .....	Part-time	-	-	
Crimestopper Co-ordinator .....	Full-time	1.00	58,555	
Detachment Operations Clerk .....		-	-	
Detachment Operations Clerk .....		-	-	
Garage Attendant .....		-	-	
Total Detachment Civilian Salaries .....				119,637
Benefits (26.51% of Salaries; 21.53% Part-time) .....				31,716
<b>Total Civilian Salaries &amp; Benefits</b> .....				<b>151,353</b>

Detachment Civilian Members				
Communication Operators .....			108,338	
Prisoner Guards Salaries & Benefits .....			25,688	
Office Automation Support Salaries & Benefits .....			8,170	
Telephone Support Salaries & Benefits .....			2,432	
Operational Support Salaries & Benefits .....			80,959	
<b>Total Support Staff Salaries and Benefits Costs</b> .....				<b>225,587</b>

<b>Total Salaries &amp; Benefits</b>	<b>2,786,928</b>
--------------------------------------	------------------

**Other Direct Operating Expenses**

Communication Centre .....		4,750
Operational Support .....		14,250
RHQ Municipal Support .....		41,686
Vehicle Usage .....		156,351
Telephone .....		22,800
Detachment Supplies & Equipment .....		9,557
Uniform & Equipment .....		23,237
Uniform & Equipment - Court Officer .....		-
Cleaning Contract .....		-
Mobile Radio Equipment Repairs & Maintenance .....		15,276
Mobile Radio Equipment Repairs & Maintenance - Court Officer .....		-
Office Automation - Uniform .....	(Note 2)	28,586
Office Automation - Civilian .....	(Note 3)	14,697
Administrative Vehicle .....	(Note 4)	9,285
Canine Vehicle .....	(Note 5)	23,169
Mobile Radio Equipment Repairs & Maintenance - Canine .....	(Note 6)	332
Canine Program Costs .....	(Note 7)	7,089
<b>Total Other Direct Operating Expenses</b> .....		<b>371,065</b>

<b>TOTAL BILLED POLICING COST</b>	<b>\$ 3,157,993</b>
<b>TOTAL OPP-POLICED PROPERTIES</b>	<b>37,621</b>
<b>COST PER PROPERTY</b>	<b>\$ 83.94</b>

**O.P.P. CONTRACT ENHANCEMENT COST SUMMARY    Wellington Co**  
**Billed Policing Costs for the period**  
**January 01, 2015 to December 31, 2015**

- 1) Uniform salaries are estimated 2015 provincial average salary rates. The civilian salaries are estimated 2015 salary rates. Overtime is included in the Annual Billing Statement line item. Of the 16 Constables one has been designated as a Canine Member.
- 2) Office Automation - Uniform is calculated at \$1,401 per uniform member and includes the annual costs for (1) laptop at an annually cost of \$1,967.
- 3) Office Automation - Civilian is calculated at \$1,633 per civilian member and additional computers. Costs include seven (7) the
- 4) The Administrative vehicle has an annual cost of \$ 9,285.
- 5) Canine Unit vehicle at an annual cost of \$23,169.
- 6) Mobile Radio Equipment Repairs and Maintenance for Canine Constable an annual cost \$332.
- 7) Canine Program Costs include Canine Training, Kennel and Canine Maintenance at an annual cost of \$7,089.

# **OPP TOTAL BASE SERVICE AND CALLS FOR SERVICE COST SUMMARY**

For the Period January 01 to December 31, 2015

## **Salaries and Benefits**

					Total Base Service and Calls for Service	Base Service	Calls for Service
	Note 1	FTE	Base %	\$/FTE	\$	\$	\$
<b>Uniform Members</b>							
Inspector .....		24.67	100.0	145,080	3,579,124	3,579,124	-
Staff Sergeant-Detachment Commander .....		14.96	100.0	130,860	1,957,666	1,957,666	-
Staff Sergeant .....		26.61	100.0	121,774	3,240,406	3,240,406	-
Sergeant .....		233.56	60.1	109,512	25,577,623	15,372,199	10,205,423
Constables .....		1,929.37	60.1	92,158	177,806,880	106,861,809	70,945,072
Part Time Constables .....		8.30	60.1	73,588	610,780	367,204	243,576
Total Uniform Salaries		2,237.47		95,095	212,772,479	131,378,408	81,394,071
Contractual Payout (Vacation & Statutory Holidays) .....				3,748	8,354,929	5,120,368	3,234,561
Shift Premium .....				678	1,472,094	884,729	587,365
Benefits (27.34% Full-time, Insp. 22.70%, 17.11% Part-time) .....					57,943,442	35,715,220	22,228,221
<i>Total Uniform Salaries &amp; Benefits</i>				125,384	280,542,944	173,098,725	107,444,219
<b>Detachment Civilian Members</b>	Note 1						
Court Officer .....		14.20	60.1	63,083	895,779	538,729	357,050
Detachment Administrative Clerk .....		174.33	60.1	61,082	10,648,425	6,400,172	4,248,253
Detachment Clerk Typist .....		0.67	60.1	53,183	35,633	21,273	14,359
Detachment Operations Clerk .....		0.86	60.1	58,560	50,362	30,451	19,910
Garage Attendant .....		2.26	60.1	51,534	116,467	70,086	46,381
Total Detachment Civilian Salaries		192.32			11,746,665	7,060,711	4,685,953
Benefits (26.51% of Salaries) .....					3,114,041	1,871,795	1,242,246
<i>Total Detachment Civilian Salaries &amp; Benefits</i>				77,271	14,860,706	8,932,506	5,928,200
<b>Support Staff (Salaries and Benefits)</b>	Note 2						
Communication Operators .....				5,702	12,758,054	7,818,297	4,939,757
Prisoner Guards .....				1,352	3,025,059	1,853,795	1,171,265
Office Automation Support .....				430	962,112	589,595	372,518
Telephone Support .....				128	286,396	175,507	110,889
Operational Support .....				4,261	9,533,860	5,842,470	3,691,390
<i>Total Support Staff Salaries and Benefits Costs</i>					26,565,481	16,279,664	10,285,817
<b>Total Salaries &amp; Benefits</b>					<b>321,969,130</b>	<b>198,310,895</b>	<b>123,658,236</b>

## **Other Direct Operating Expenses** Note 2

Communication Center .....	250	559,368	342,788	216,580
Operational Support .....	750	1,678,103	1,028,363	649,740
RHQ Municipal Support .....	2,194	4,909,009	3,008,303	1,900,706
Vehicle Usage .....	8,229	18,412,141	11,283,193	7,128,947
Telephone .....	1,200	2,684,964	1,645,380	1,039,584
Detachment Supplies .....	503	1,125,447	689,688	435,759
Uniform & Equipment .....	1,223	2,736,426	1,676,916	1,059,509
Mobile Radio Equipment Maintenance .....	804	1,798,926	1,102,405	696,521
Office Automation - Uniform .....	1,401	3,134,695	1,920,981	1,213,714
Office Automation - Civilian .....	1,633	287,179	172,608	114,571
Uniform & Equipment Court officer .....	702	9,968	5,995	3,973
Mobile Radio Equipment Maintenance Court Officer .....	804	11,417	6,866	4,551
<i>Total Other Direct Operating Expenses</i>		37,347,643	22,883,486	14,464,157

## **Total 2015 Municipal Base and Calls for Service Cost**

**\$ 359,316,773 \$ 221,194,381 \$ 138,122,392**

## **Total OPP-Policed Municipal Properties**

**1,103,152**

## **BASE SERVICE COST PER PROPERTY**

**\$200.51**

**OPP TOTAL BASE SERVICE AND CALLS FOR SERVICE COST SUMMARY**  
**January 01, 2015 to December 31, 2015**

**Notes:**

Total Base Service and Call for Service Costs are based on the cost of salary, benefit, support and other direct operating expenses for staff providing policing services to municipalities. Staff is measured in full-time equivalent (FTE) units and the costs per FTE are described in the notes below.

- 1) Full-time equivalents (FTEs) are based on average municipal detachment staffing levels for the years 2010 through 2013. Contract staff enhancements are excluded.

The equivalent of **100.5 FTEs with a cost of \$14,778,590**, has been excluded from the Base Service and Calls for Service to reflect the average municipal detachment FTEs required for provincially-mandated responsibilities eligible for Provincial Service Usage credit.

Uniform salaries rates are based on weighted average rates for municipal detachment staffing by rank, level and classification. The 2015 salaries were estimated based on the 2014 rates set in the 2011 to 2014 Compensation Framework Agreement between the OPPA and the Ministry of Government Services with an estimated overall general salary rate increase of 1.5% applied.

FTEs have been apportioned between Base Service and Calls for Service costs based on the current ratio, **60.1% Base Service : 39.9% Calls for Service**.

- 2) Support Staff Costs and Other Direct Operating Expenses for uniform FTEs are calculated on a per FTE basis as per rates set in the 2014 Municipal Policing Cost-Recovery Formula.

## Calls For Service Details

For the Period January 1 to December 31, 2015

Calls for Service Billing Workgroups Detailed	Calls for Service Count				
	2010	2011	2012	2013	Four Year Average

<b>Wellington County</b>	<b>12161</b>	<b>12259</b>	<b>13374</b>	<b>13324</b>	<b>12,779.50</b>
<b>Drugs</b>	<b>60</b>	<b>42</b>	<b>51</b>	<b>58</b>	<b>52.75</b>
CDSA * Sec.6		1		1	0.50
DRUG Operation - Commercial Grown [outdoor]			1		0.25
DRUG Operation - Master Code	2	6	5	2	3.75
DRUG Operation - Residential Grow [indoor]	6	3	2	4	3.75
DRUG Operation - Residential Grow [outdoor]	5	2	7	2	4.00
DRUG Operation - Residential Lab				1	0.25
DRUG Operation - Rural Grow	14	5	6	10	8.75
Production - Cannabis (Marihuana) (Cultivation)	8	5	10	7	7.50
Production - Other Controlled Drugs & Substances	3		2	1	1.50
Trafficking - Cannabis	13	10	7	9	9.75
Trafficking - Cocaine	2	1	5	5	3.25
Trafficking - Methamphetamine (Crystal Meth)			2	9	2.75
Trafficking - Other Controlled Drugs and Substances Act	7	9	4	7	6.75
<b>Drugs Possession</b>	<b>197</b>	<b>218</b>	<b>305</b>	<b>334</b>	<b>263.50</b>
DRUG related occurrence	59	103	165	137	116.00
Possession - Cannabis	103	99	108	148	114.50
Possession - Cocaine	5	2	1	9	4.25
Possession - Heroin				1	0.25
Possession - Methamphetamine (Crystal Meth)	4	3	8	9	6.00
Possession - Other Controlled Drugs and Substances Act	26	11	23	30	22.50
<b>Operational</b>	<b>4828</b>	<b>4189</b>	<b>4541</b>	<b>4846</b>	<b>4601.00</b>
ACCIDENT - NON-MVC - COMMERCIAL	6	6	6	5	5.75
ACCIDENT - NON-MVC - CONSTRUCTION SITE	3	1	5	1	2.50
ACCIDENT - NON-MVC - INDUSTRIAL	15	16	13	24	17.00
ACCIDENT - NON-MVC - Master Code	4		1		1.25
ACCIDENT - NON-MVC - PUBLIC PROPERTY	3		1	1	1.25
ACCIDENT - NON-MVC - RESIDENTIAL	5	4	3	3	3.75
Accident - Non-MVC Others	9	6	4	10	7.25
Alarm - Master Code	100	11	8	5	31.00
Alarm - Others	19	30	12	67	32.00
Animal - Bear Complaint			3	3	1.50
Animal - Dog Owners Liability Act	19	20	22	42	25.75
Animal - Master Code	13	5	1	16	8.75
Animal - Other	76	94	156	169	123.75
Animal Bite	20	21	19	27	21.75
Animal Injured	32	40	42	85	49.75
Animal Rabid	7	4	14	22	11.75

## Calls For Service Details

For the Period January 1 to December 31, 2015

Calls for Service Billing Workgroups Detailed	Calls for Service Count				
	2010	2011	2012	2013	Four Year Average
Animal Stray	41	39	41	37	39.50
Assist Fire Department	28	13	20	20	20.25
Assist Public	249	156	224	536	291.25
Bomb Threat	2	1			0.75
By-Law-Master code	3	3	1		1.75
CHILD NEGLECT		1	1	1	0.75
Compassionate Message	8	7	4	10	7.25
Distressed / Overdue Motorist	3	10	11	7	7.75
Dogs By-Law	3	1		2	1.50
Domestic Disturbance	327	349	391	417	371.00
False Fire Alarm - Building	7	2	2	9	5.00
False Fire Alarm - Other	1	2	1	1	1.25
FAMILY DISPUTE	328	286	386	277	319.25
Fire - Building	24	29	19	49	30.25
Fire - Master code	1				0.25
Fire - Other	27	25	35	22	27.25
Fire - Vehicle	13	11	19	18	15.25
Fire Alarm - Master Code	1				0.25
Firearms (Discharge) By-Law	1		5	2	2.00
Found - Bicycles	48	54	51	37	47.50
Found - Domestic Appliances			1		0.25
Found - Gun	2	3	1	3	2.25
Found - Household Property	13	12	6	12	10.75
Found - Jewellery			1	3	1.00
Found - License Plate			6	21	6.75
Found - Machinery & Tools	4	5	5	2	4.00
Found - Office Machines & Equipment	1	1	2	1	1.25
Found - Others	61	49	59	37	51.50
Found - Personal Accessories	38	39	64	55	49.00
Found - Radio, TV, Sound-Reprod. Equip.	4	3	5	2	3.50
Found - Sci., Optical, Measuring Devices			1	1	0.50
Found - Sporting Goods, Hobby Equip.	5	7	9	7	7.00
Found Property - Master Code	80	72	57	45	63.50
Insecure Condition - Building	44	35	33	31	35.75
Insecure Condition - Others	3	4	7		3.50
Insecure Condition - Vehicle	1	2	4	4	2.75
Loitering By-Law	2			1	0.75
Lost - Bicycles	1	3		2	1.50
Lost - Disabled Parking Permit			23	21	11.00

**Calls For Service Details**  
**For the Period January 1 to December 31, 2015**

Calls for Service Billing Workgroups Detailed	Calls for Service Count				
	2010	2011	2012	2013	Four Year Average
Lost - Gun	1	2			0.75
Lost - Household Property	1	1	3	1	1.50
Lost - Jewellery	5	3	4	2	3.50
Lost - License Plate		1	193	243	109.25
Lost - Machinery & Tools		4	1		1.25
Lost - Musical Instruments	1				0.25
Lost - Office Machines & Equipment			1		0.25
Lost - Others	268	261	80	68	169.25
Lost - Personal Accessories	46	46	44	48	46.00
Lost - Photographic Equipment	2			1	0.75
Lost - Radio, TV, Sound-Reprod. Equip.	6	3	7	11	6.75
Lost - Sporting Goods, Hobby Equip.	1	1	2	1	1.25
Lost Property - Master Code	89	82	33	39	60.75
Medical Assistance - Master Code	5	2	1	2	2.50
Medical Assistance - Other	14	21	34	13	20.50
Missing Person 12 & older	95	55	74	62	71.50
Missing Person Located 12 & older	140	97	123	125	121.25
Missing Person Located 12 & older - Foul play suspected	1				0.25
Missing Person Located Under 12	12	15	12	9	12.00
Missing Person under 12	10	5	7	7	7.25
Missing Person-Master code	7	2	2	5	4.00
Neighbour Dispute	164	194	190	199	186.75
Noise By-Law	146	112	120	55	108.25
Noise Complaint - Animal	31	25	38	38	33.00
Noise Complaint - Business			11	6	4.25
Noise Complaint - Master Code	32	11	6	7	14.00
Noise Complaint - Others	175	173	89	70	126.75
Noise Complaint - Residence			163	185	87.00
Noise Complaint - Vehicle	19	13	17	21	17.50
Other Municipal By-Laws	116	150	165	190	155.25
Phone - Master Code	104	31	17	3	38.75
Phone - Nuisance - No Charges Laid	145	132	99	112	122.00
Phone - Obscene - No Charges Laid	5	9	4	6	6.00
Phone - Other - No Charges Laid	46	41	29	39	38.75
Phone - Threatening - No Charges Laid	12	22	12	8	13.50
Protest/Demonstration			1	3	1.00
Sudden Death - Accidental	5	4	1	1	2.75
Sudden Death - master code	5	2	3	2	3.00
Sudden Death - Natural Causes	51	43	59	53	51.50

## Calls For Service Details

For the Period January 1 to December 31, 2015

Calls for Service Billing Workgroups Detailed	Calls for Service Count				
	2010	2011	2012	2013	Four Year Average
Sudden Death - Others	3	5	3	2	3.25
Sudden Death - Suicide	7	5	12	9	8.25
SUSPICIOUS PACKAGE	1		5		1.50
Suspicious Person	341	307	322	374	336.00
Suspicious vehicle	290	261	222	235	252.00
Taxi By-Law	4	3	1		2.00
Traffic By-Law	15	9	1	12	9.25
Trouble with Youth	427	355	334	239	338.75
Unwanted Persons	175	127	130	126	139.50
Vehicle Recovered - All Terrain Veh	3	5	5	2	3.75
Vehicle Recovered - Automobile	52	28	18	20	29.50
Vehicle Recovered - Farm Vehicles				1	0.25
Vehicle Recovered - Master Code			2	3	1.25
Vehicle Recovered - Motorcycles	5	1	6	2	3.50
Vehicle Recovered - Other	8	8	9	3	7.00
Vehicle Recovered - Snow Vehicles	3	1	2		1.50
Vehicle Recovered - Trucks	29	29	19	10	21.75
<b>Operational 2</b>	<b>2686</b>	<b>3547</b>	<b>3839</b>	<b>3526</b>	<b>3399.50</b>
911 call / 911 hang up	1633	2496	2753	2471	2338.25
911 hang up - Pocket Dial				3	0.75
False Alarm - Accidental Trip	157	146	134	140	144.25
False Alarm - Cancelled	292	343	297	265	299.25
False Alarm - Malfunction	242	241	233	266	245.50
False Alarm - Others	215	167	215	203	200.00
False Holdup Alarm - Accidental Trip	9	7	5	3	6.00
False Holdup Alarm - Malfunction	3	5	5	1	3.50
Keep the Peace	135	142	197	174	162.00
<b>Other Criminal Code Violations (Excluding traffic)</b>	<b>327</b>	<b>262</b>	<b>324</b>	<b>269</b>	<b>295.50</b>
Animals - Cruelty	5	4	4	2	3.75
Animals - Kill or injure	3		3	2	2.00
Animals - Others			2	2	1.00
Animals - Unnecessary suffering			2	1	0.75
Attempts, Conspiracies, Accessories			1		0.25
Bail Violations - Appearance Notice	4		3	3	2.50
Bail Violations - Disobey Summons			1	2	0.75
Bail Violations - Fail To Appear	8	3	11	9	7.75
Bail Violations - Fail To Comply	76	41	55	48	55.00
Bail Violations - Master Code		2	1	1	1.00
Bail Violations - Others	3	7	7	5	5.50

## Calls For Service Details

For the Period January 1 to December 31, 2015

Calls for Service Billing Workgroups Detailed	Calls for Service Count				
	2010	2011	2012	2013	Four Year Average
Bail Violations - Promise To Appear	1			2	0.75
Bail Violations - Recognizance	8	2	1	6	4.25
Breach of Firearms regulation - Unsafe Storage	1		1	1	0.75
Breach of Probation	52	32	51	38	43.25
Breach of Probation - In relation to children	1	1		2	1.00
Child Pornography - Master Code		1	1		0.50
Child Pornography - Other	1				0.25
Child Pornography - Possess child pornography	5	1	3	3	3.00
Child Pornography - Print/publish child pornography			1		0.25
Counterfeit Money - Others	10	5	6	4	6.25
Counterfeit Money-Master code	4	4	3	1	3.00
Disobey court order/Misconduct executing process	3	3	7	3	4.00
Disturb the Peace	51	80	69	52	63.00
Fail to Attend Court	3		1	1	1.25
False Fire Alarm (C.C. Charge)	2				0.50
Import/Export - Firearm /weapon /ammunition /device		1			0.25
Indecent acts - exposure to person under 14	1		2	1	1.00
Indecent acts - Master Code	2	7	6		3.75
Indecent acts - Other	10	12	25	2	12.25
Instruments and literature for illicit drug use	1				0.25
Nudity - public/private property	1	2	1	1	1.25
Obstruct Justice/Fabricate Evidance				1	0.25
Obstruct Public Peace Officer	5	4	2	1	3.00
Offensive Weapons - Careless use of firearms	2	5	6	7	5.00
Offensive Weapons - Carry concealed		2	2	2	1.50
Offensive Weapons - Explosives	3		1		1.00
Offensive Weapons - In Vehicle	1	2	1		1.00
Offensive Weapons - Other Weapons Offences	8	14	15	8	11.25
Offensive Weapons - Possession of Weapons	10	4	8	9	7.75
Offensive Weapons - Prohibited	2	3	1	2	2.00
Offensive Weapons - Restricted		1		1	0.50
Offensive Weapons - Weapons Trafficking			1		0.25
Offensive Weapons-Other Offensive Weapons	6	2	2	17	6.75
Other Criminal Code * Sec. 78 - Sec. 96	1				0.25
Other Criminal Code * Sec.462 - Sec.753				2	0.50
Personate Peace Officer	2				0.50
Possess Firearm while prohibited	1				0.25
Possession of Burglary Tools	3		4	2	2.25
Possession Of Counterfeit Money	5	1			1.50

## Calls For Service Details

For the Period January 1 to December 31, 2015

Calls for Service Billing Workgroups Detailed	Calls for Service Count				
	2010	2011	2012	2013	Four Year Average
Prostitution - Other Prostitution				1	0.25
Prostitution under 18 - procuring				1	0.25
Public Mischief - mislead peace officer	1	3		2	1.50
Public Morals	2	2	2	2	2.00
Trespass at Night	13	6	5	11	8.75
Utter Threats to damage property	4	2	4	7	4.25
Utter Threats to Property / Animals	2	1	2	1	1.50
Uttering Counterfeit Money		2			0.50
<b>Property Crime Violations</b>	<b>1723</b>	<b>1527</b>	<b>1719</b>	<b>1613</b>	<b>1645.50</b>
Arson - Auto	2			1	0.75
Arson - Building	5			2	1.75
Arson - Others	2	3	2		1.75
Break & Enter - Firearms	1	3	5		2.25
False Pretence - Other		1			0.25
Fraud - Account closed	1	1	2	2	1.50
Fraud - False Pretence Over \$5,000			2		0.50
Fraud - False Pretence Under \$5,000	10	12	19	6	11.75
Fraud - Forgery & Uttering	4	8	3	6	5.25
Fraud - Fraud through mails	18	12	17	11	14.50
Fraud - Master Code	9	6	15	10	10.00
Fraud - Money/property/security Over \$5,000	9	16	14	19	14.50
Fraud - Money/property/security Under \$5,000	29	33	39	53	38.50
Fraud - Other	45	66	60	65	59.00
Fraud - Steal/Forge/Poss./Use Credit Card	22	15	12	22	17.75
Fraud - Welfare benefits	1	1			0.50
Identity Fraud		9	7	9	6.25
Identity Theft		1		1	0.50
Interfere with lawful use, enjoyment of property	7	3	6	3	4.75
Mischief	557	443	485	417	475.50
Mischief Graffiti - Non-Gang Related	31	15	13	20	19.75
Mischief with Data	1				0.25
Personation with Intent (fraud)	5	4	5	4	4.50
Possession of Stolen Goods - Master Code	5	1	2		2.00
Possession of Stolen Goods over \$5,000			9	4	3.25
Possession of Stolen Goods under \$5,000			10	5	3.75
Property Damage	57	70	57	48	58.00
Theft FROM Motor Vehicles Over \$5,000	5	3	1		2.25
Theft FROM Motor Vehicles Under \$5,000	250	179	195	170	198.50
Theft of - All Terrain Vehicles		4	13	7	6.00

**Calls For Service Details**  
**For the Period January 1 to December 31, 2015**

Calls for Service Billing Workgroups Detailed	Calls for Service Count				
	2010	2011	2012	2013	Four Year Average
Theft of - Automobile		4	13	15	8.00
Theft of - Buses				1	0.25
Theft of - Construction Vehicles			1	2	0.75
Theft of - Farm Vehicles			2	2	1.00
Theft of - Motorcycles			10	3	3.25
Theft of - Other Motor Vehicles		1	4	1	1.50
Theft of - Snow Vehicles		2		3	1.25
Theft of - Trucks		3	16	13	8.00
Theft of Motor Vehicle			36	27	15.75
Theft Over - Master Code	8	11	9	4	8.00
Theft Over \$,5000 - Construction Site	1	1		1	0.75
Theft Over \$5,000 - Bicycles		1	1	2	1.00
Theft Over \$5,000 - Boat (Vessel)		1		1	0.50
Theft Over \$5,000 - Boat Motor			1		0.25
Theft Over \$5,000 - Building	1	2			0.75
Theft Over \$5,000 - Farm Agricultural Livestock	1	1			0.50
Theft Over \$5,000 - Farm Equipment	2	3	1	6	3.00
Theft Over \$5,000 - Mail	1				0.25
Theft Over \$5,000 - Mine Equipment/Property		2			0.50
Theft Over \$5,000 - Other Theft	12	18	24	24	19.50
Theft Over \$5,000 - Persons			1	1	0.50
Theft Over \$5,000 - Trailers	5	3	5	5	4.50
Theft Over \$5,000 - Truck Load	2			5	1.75
Theft Over \$5,000 SHOPLIFTING		1	1		0.50
Theft Under \$5,000 - Bicycles	60	35	57	48	50.00
Theft Under \$5,000 - Boat (Vessel)	2	2	5	5	3.50
Theft Under \$5,000 - Boat Motor	1	4		1	1.50
Theft Under \$5,000 - Building	13	2	7	10	8.00
Theft Under \$5,000 - Construction Site	9	4	4	2	4.75
Theft Under \$5,000 - Farm Agricultural Livestock	1		2		0.75
Theft Under \$5,000 - Farm Agricultural Produce	2	1	1		1.00
Theft Under \$5,000 - Farm Equipment	5	2	4	2	3.25
Theft Under \$5,000 - Gasoline Drive-off			17	120	34.25
Theft Under \$5,000 - Mail	2	3	4	5	3.50
Theft Under \$5,000 - Master Code	63	45	39	42	47.25
Theft Under \$5,000 - Other Theft	377	411	350	298	359.00
Theft Under \$5,000 - Persons	12	7	34	25	19.50
Theft Under \$5,000 - Trailers	21	13	17	8	14.75
Theft Under \$5,000 - Truck Load		1			0.25

## Calls For Service Details

For the Period January 1 to December 31, 2015

Calls for Service Billing Workgroups Detailed	Calls for Service Count				
	2010	2011	2012	2013	Four Year Average
Theft Under \$5,000 SHOPLIFTING	46	34	60	46	46.50
<b>Statutes &amp; Acts</b>	<b>666</b>	<b>602</b>	<b>721</b>	<b>745</b>	<b>683.50</b>
CHILDREN'S LAW REFORM ACT				1	0.25
Custody Dispute	19	10	7	7	10.75
FAMILY LAW ACT - CUSTODY/ACCESS ORDER	9	4	1	3	4.25
FAMILY LAW ACT - Master Code		3		1	1.00
FAMILY LAW ACT - ORDER FOR POSSESSION OF MATRIMONIAL HOME		1			0.25
FAMILY LAW ACT - OTHER	6	2	2	3	3.25
FAMILY LAW ACT - RESTRAINING ORDER	2				0.50
Landlord / Tenant	115	106	140	114	118.75
Mental Health Act	213	199	210	224	211.50
Mental Health Act - Attempt Suicide	62	68	65	90	71.25
Mental Health Act - Threat of Suicide			47	92	34.75
Trespass To Property Act	223	201	225	204	213.25
Youth Criminal Justice Act (YCJA)	17	8	24	6	13.75
<b>Traffic</b>	<b>1199</b>	<b>1339</b>	<b>1249</b>	<b>1461</b>	<b>1312.00</b>
MVC - FATAL (MOTOR VEHICLE COLLISION)	6	5	4	4	4.75
MVC - OTHERS (MOTOR VEHICLE COLLISION)	6	3	5	3	4.25
MVC - PERS. INJ. FAILED TO REMAIN	13	3	6	6	7.00
MVC - PERSONAL INJURY	85	104	73	104	91.50
MVC - PROP. DAM. FAILED TO REM	89	106	102	110	101.75
MVC - PROP. DAM. NON REPORTABLE	282	312	273	327	298.50
MVC - PROP. DAM. REPORTABLE	712	797	781	903	798.25
MVC (MOTOR VEHICLE COLLISION) - Master Code	5	9	5	4	5.75
Road Rage	1				0.25
<b>Violent Criminal Code</b>	<b>475</b>	<b>533</b>	<b>625</b>	<b>472</b>	<b>526.25</b>
Abandon Child	1				0.25
Abduction - No Custody Order		1			0.25
Aggravated Assault - Level 3	1	3	2	2	2.00
Aggravated Sexual Assault			1	1	0.50
Arson - Disregard for Human Life	1				0.25
Assault - Level 1	203	210	267	234	228.50
Assault Peace Officer	3	3	2	5	3.25
Assault Peace Officer with weapon OR cause bodily harm			1		0.25

## Calls For Service Details

For the Period January 1 to December 31, 2015

Calls for Service Billing Workgroups Detailed	Calls for Service Count				
	2010	2011	2012	2013	Four Year Average
Assault With Weapon or Causing Bodily Harm - Level 2	37	38	27	29	32.75
Attempted Murder			1		0.25
Corrupting morals of a child			1		0.25
Criminal Harassment	62	84	108	42	74.00
Criminal Harassment - Offender Unknown	1	6	5	1	3.25
Criminal Negligence - Bodily Harm		1			0.25
Extortion	1			3	1.00
Forcible confinement	1	5	1		1.75
Invitation to Sexual Touching	1	3			1.00
Kidnapping			1		0.25
MISCHIEF - CAUSE DANGER TO LIFE	1	2	2		1.25
Murder 1st Degree	1		1		0.50
Other Assaults / Admin Noxious thing		2	2	1	1.25
Other Criminal Code * against public order"	1				0.25
Pointing a Firearm	1		1		0.50
Robbery - Other	2	2	2	1	1.75
Robbery - Pursesnatch				1	0.25
Robbery - Pursesnatch With Violence	1				0.25
Robbery - Threat of Violence	5	1	2		2.00
Robbery-Master code	3	1	1	1	1.50
Sexual Assault	43	47	62	49	50.25
Sexual exploitation of a person with a disability				2	0.50
Sexual Interference	1	1	2	3	1.75
Threatening / Indecent Phone Calls	4	5	8	3	5.00
Unlawfully Causing Bodily Harm		1		1	0.50
Using firearm (or imitation) in commission of offence			3		0.75
Utter Threats to Person	91	105	112	88	99.00
Utter Threats to Person - Government Employee (non-police)		1	1		0.50
Utter Threats to Person - Police Officer	1		1		0.50
Utter Threats-Master code	7	11	8	5	7.75
Voyeurism	1				0.25

## 2015 OPP Municipal Policing Billing General Information

### Provincial Recovery Summary

The total municipal cost-recoveries included in the 2015 municipal billings are summarized below.

Cost	Recovery
Base Services	\$221,194,381
Calls for Service	\$138,122,392
Overtime	\$12,849,653
Court Security	\$3,651,859
Contract Enhancements	\$14,842,139
Prisoner Transportation	\$2,663,599
Cleaning Services	\$2,978,456
Accommodation	\$907,504
<b>Total Municipal Cost-Recovery (1)</b>	<b>\$397,209,983</b>

(1) Excludes anticipated regulatory discounts (estimated \$611k)

### Provincial Service Usage

The revised billing model recognizes all of the detachments that service municipalities (municipal detachments) as one entity supporting each other with investigations, workload pressures and staffing shortages. Provincial Service Usage (PSU) is generated when officers perform provincially-mandated responsibilities requiring them to work outside the municipal detachments or perform certain specialized duties within detachment areas; for example security for a major event such as the G8/G20 Conference. To acknowledge the deployment of municipal detachment officers for PSU related activities, municipal costs have been discounted. A PSU discount rate is applied to the total municipal policing FTEs to reflect the reduction in service provided to all municipalities. The rate is based on a four-year average of the annual rates calculated for 2010 through 2013. Each annual rate has been calculated as 'the total PSU hours for all municipal detachments' divided by 'the total hours worked in municipal detachments'. The PSU discount rate applied in 2015 is 3.91%. In total \$14,778,590 (100.5 municipal policing FTEs), has been removed from the costs allocated to municipalities.

### Detachment revenue

Revenue collected at detachments on behalf of municipalities has not been included in the forecasted 2014 costs or 2015 billing summary costs. The 2014 revenue owing to municipalities will be included in the final reconciliation of 2014 costs. Any detachment revenue owing to municipalities upon completion of 2015 will be credited to the municipality through a reduction in a 2016 monthly billing amount.

## **2014 Reconciliation Adjustment**

The reconciliation process for 2014 municipal policing costs will be completed in the same manner as in previous years. Upon completion of the year-end reconciliations the phase-in cost adjustments will be recalculated for all municipalities based on the final costs for all municipalities. The determination of the final 2014 costs may change the per property phase-in caps applied in the issued billing. The capped per property rate may be decreased or increased depending on the final year end status of the costs. Rather than adjust the 2015 monthly billings the net impact of the required adjustment will be included in the 2014 year end reconciliation credit or invoice issued. For further details please see the example detailed below.

## **2015 Year End Adjustment**

Upon completion of 2015, municipal costs based on salaries and benefits components may be recalculated to account for variances between estimated and final rates applicable for the year as determined by collective bargain agreements and the Ministry of Government Services revised benefits calculations. The number of municipal detachment FTEs, "base/calls for service" ratio, property counts, municipal calls for service allocation rates, and PSU discounts included in the original calculations of the 2015 billing will remain unchanged. Court Security, Contract Enhancements and Prisoner Transport costs will be recalculated based on actual 2015 data. Any adjustments required as a result of the recalculation of 2015 costs will be included as a Prior Year Adjustment in the 2017 Annual Billing Statement issued in fall 2016 unless other arrangements are requested.

## **Court Security and Prisoner Transportation Grant**

The Ministry of Community Safety and Correctional Services (MCSCS) has been reviewing the municipal grant allocations for 2015 and 2016. Court Security and Prisoner Transport (CSPT) costs will be partially offset by the finalized grant allocation. The process currently used to distribute the grants is under review in an effort to streamline the system. An option to allow the OPP to issue credits to municipalities for their CSPT grants is under consideration. Municipalities will be advised of any changes to the distribution process.

## **Municipalities Currently in OPP Policing Service Contract Arrangements with Enhancements**

Municipalities currently in policing services contracts with enhancements have been issued two separate billing statements for cost estimation purposes. Statements have been prepared with and without enhancements. Contract enhancements in municipal detachments have been reviewed and estimated under the new billing model methodology. The costs associated with contract enhancements for dedicated court security responsibilities are included in the Court Security costs. Municipalities expressing intent to continue with enhancements upon renewal of their contracts, if applicable, will be billed based upon the enhanced billing statement while

negotiations are being conducted. Once contract arrangements have been finalized a final billing statement will be issued and billing for the year will be adjusted as required.

### **Municipalities in Group Policing Service Contract Arrangements**

Municipalities are allocated police services costs in accordance with their municipal structure and assumed responsibility for policing as dictated by the *Police Service Act s.4*; that is any lower tier, single tier or regional municipality is billed based on the costs allocated to them. If municipalities continue with group OPP Policing Service contract arrangements after December 31, 2014, the costs for the group will be the sum of the cost of contract enhancements and the costs of the individual municipalities.

Municipalities in group policing service contract arrangements that include contract enhancements for FTEs or other direct operating expenses have been issued two separate billing statements. One statement captures the cost of the previously contracted enhancements, allocated to each of the group municipalities based on property counts and the other statement excludes the cost of any enhancements.

For purposes of calculating the phase-in billing adjustment, the 2014 forecasted cost for existing group contract municipalities has been allocated to member municipalities based on the current cost sharing arrangements as provided by the Group.

## Property Count Definition: OPP Municipal Policing Billing Model

The property counts included in the OPP municipal policing bills are comprised of household, commercial and industrial properties. The property counts will be updated annually based on Municipal Property Assessment Corporation (MPAC)<sup>1</sup> data. The counts included in the 2015 OPP municipal billing were based upon 2012 year end property counts for 2013 taxation.

### Households

Household counts are the number of residential units (RU), farmlands on which a farm residence exists (FRU), and seasonal dwelling units (RDU).

### Commercial and Industrial Business Properties

Business property counts are the number of assessment roll numbers in the commercial and industrial realty tax classes (RTC) detailed in Appendix A. The count includes the number of commercial and industrial classifications taxed at the fully occupied tax rates (refer to Realty Tax Qualifier (RTC) descriptions in Appendix B).

### Other Property Count Considerations

- Households, commercial and industrial properties on Canadian Forces Bases (CFB) have been excluded, as CFBs have their own police.
- Property counts have been adjusted for municipalities receiving hybrid (OPP and Municipal police) policing services.
- Timeshares are adjusted in household numbers to count the assessment roll numbers as identified by MPAC Property Codes 385 and 386.
- A building with an apartment above a retail store counts as two properties. The upper portion counted as a household property and the lower portion counted as a commercial property.
- There is no distinction made between types of commercial and industrial properties. For example, a single property count would apply to each: a gas station, an office building, a nightclub, or a stadium.
- Commercial properties with multiple units, such as shopping malls count as a single property, regardless of the number of commercial units operating within malls. Similarly, a large industrial property with a small commercial unit attached would be counted as a single property.
- Vacant lands, such as farmland, managed forest, municipal parks, conservation lands, and commercial or industrial vacant lands are not included in the property counts.
- Institutional properties are excluded, with the exception of those with a residential component (e.g. continuum of care seniors facility), which would be captured in the household numbers.

---

<sup>1</sup> MPAC is responsible for determining assessed values and classifications for all properties in Ontario (<http://www.mpac.ca>).

## Property Count Definition

### Appendix A

#### Realty Tax Class (RTC) Descriptions

Properties with the following RTC are **included** in the count:

RTC Commercial*	RTC Industrial
C - Commercial	I - Industrial
D - Office Buildings	J - New construction: industrial
G - Parking Lots	K - New construction: large industrial
Q - Professional Sports Facility	L - Large industrial
S - Shopping Centre	
X - New Construction: Commercial	
Y - New Construction: Office Building	
Z - New construction: Shopping Centre	

\*Note - O - Condominium resort is excluded; these properties are captured in the household counts.

### Appendix B

#### Realty Tax Qualifier (RTQs) Descriptions

Please note in the tables below the abbreviation P.I.L. represents Payment-in-Lieu of taxes.

**INCLUDED** - Properties with the following RTQ are taxed as fully occupied and are **included** in the count, provided that they fall within one of the RTC categories outlined in Appendix A:

RTQ	DESCRIPTION
C	Lower-tier & Education Only
D	Taxable for School Taxes only.
F	Exempt from taxation, but eligible for P.I.L. at the full rate.
G	Exempt from taxation, but eligible for P.I.L. at the general rate only (No School Taxes).
H	Taxable, shared as if a P.I.L.
I	Water Intake System, Shared P.I.L.
L	Upper Tier & Education Only
M	Taxable at the General rate (No School rates).
N	Non-Generating Station, Shared P.I.L.
P	Taxable tenant of Provincially owned property, subject to P.I.L. at the full rate.
S	Generating Station, Shared P.I.L.
T	Taxable at the full rate.

## Property Count Definition

### Appendix B (Cont'd)

**EXCLUDED** - Properties with the following RTQ are **excluded** from the count:

RTQ	DESCRIPTION
1	Taxable at the Farmland Awaiting Development- Phase 1 rate (Registered Plan Stage).
2	Exempt from taxation, but eligible for P.I.L. of taxes at the Farmland Awaiting Development- Phase 1 rate (Registered Plan Stage).
3	Exempt from taxation, but eligible for P.I.L. of taxes at the General Farmland Awaiting Development- Phase 1 rate (No School Rates) (Registered Plan Stage).
4	Taxable at the Farmland Awaiting Development- Phase II rate (Building Permit Stage).
5	Exempt from taxation, but eligible for P.I.L. at the Farmland Awaiting Development- Phase II rate (Building Permit Stage).
6	Exempt from taxation, but eligible for P.I.L. at the General Farmland Awaiting Development- Phase II rate (No School Rates) (Building Permit Stage).
A	Taxable at the General Vacant Land rate (No School taxes).
B	Taxable at the General Excess Land rate (No School rates).
E	Exempt
J	Taxable at Vacant Land rate, shared as if a P.I.L. (not a PIL but shared as if it was).
K	Taxable at Excess Land rate, shared as if a P.I.L.
Q	Taxable tenant of Provincially owned property at Excess Land rate, subject to P.I.L. at the full rate.
R	P.I.L.: Full Vacant Land, Taxable Tenant of Province
U	Taxable at the Excess Land rate.
V	Exempt from taxation, but eligible for P.I.L. at the Excess Land rate.
W	Exempt from taxation, but eligible for P.I.L. at the General Excess Land rate (no School rates).
X	Taxable at the Vacant Land rate.
Y	Exempt from taxation, but eligible for P.I.L. of taxes at the Vacant Land rate.
Z	Exempt from taxation, but eligible for P.I.L. at the General Vacant Land rate (no School rates).

**Ontario Provincial Police**  
**2014 Municipal Policing Cost-Recovery Formula Comparison**  
**Estimated Constable Cost Comparison**

The 2015 costs incorporate the 2014 Municipal Cost-Recovery Formula rates. The 2014 costs incorporate the 2013 Municipal Cost-Recovery Formula rates.

Category	2015		2014		Differential	
					\$	%
<b>Constable Salary and Benefits</b>						
Salary (2014 Rate) **	\$94,699		\$94,699		\$0	0.0%
Overtime **	\$4,830	5.1%	\$6,250	6.6%	-\$1,420	-22.7%
Contractual Payout (Vacation & Statutory Holidays) **	\$3,599	3.8%	\$3,599	3.8%	\$0	0.0%
Shift Premiums	\$678		\$675		\$3	0.4%
Benefits (26.6% - 2014 , 27.34% - 2015, Overtime 2%)	\$25,987		\$25,315		\$672	2.7%
<b>Total Constable Salary and Benefits</b>	<b>\$129,793</b>		<b>\$130,538</b>		<b>-\$745</b>	<b>-0.6%</b>
<b>Support Staff Costs (Salaries and Benefits)</b>						
Communication Operators	\$5,702		\$5,164		\$538	10.4%
Prisoner Guards	\$1,352		\$1,358		-\$6	-0.4%
Office Automation Support	\$430		\$389		\$41	10.5%
Telephone Support	\$128		\$117		\$11	9.4%
Operational Support	\$4,261		\$3,858		\$403	10.4%
<b>Sub-total Support Staff Costs</b>	<b>\$11,873</b>		<b>\$10,886</b>		<b>\$987</b>	<b>9.1%</b>
<b>Other Direct Operating Expenses (ODOE)</b>						
Communication Centre	\$250		\$254		-\$4	-1.6%
Operational Support	\$750		\$903		-\$153	-16.9%
Office Automation	\$1,401		\$1,402		-\$1	-0.1%
Telephone	\$1,200		\$1,132		\$68	6.0%
Vehicle Usage	\$8,229		\$8,058		\$171	2.1%
Uniform & Equipment	\$1,223		\$1,174		\$49	4.2%
Detachment Supplies and Equipment	\$503		\$530		-\$27	-5.1%
Mobile Radio Equipment Maintenance	\$804		\$791		\$13	1.6%
Accommodation	\$563		\$588		-\$25	-4.3%
Cleaning Contract	\$465		\$303		\$162	53.5%
RHQ Municipal Support	\$2,194		\$2,006		\$188	9.4%
<b>Sub-total ODOE Support Costs</b>	<b>\$17,582</b>		<b>\$17,141</b>		<b>\$441</b>	<b>2.6%</b>
<b>Total Support Staff Costs and ODOE</b>	<b>\$29,455</b>		<b>\$28,027</b>		<b>\$1,428</b>	<b>5.1%</b>
<b>Total Estimated Constable Cost</b>	<b>\$159,248</b>		<b>\$158,565</b>		<b>\$683</b>	<b>0.4%</b>

\*\* The salary rate is based on the average of all 1st Class Constable 2014 rates. 2015 Overtime and Contractual Payouts are estimated based on fiscal 2013-14 costs.



# COUNTY OF WELLINGTON

---

## COMMITTEE REPORT

**To:** Chair and Members of the Police Services Board  
**From:** Ken DeHart, County Treasurer  
**Date:** Wednesday, October 8, 2014  
**Subject:** **Police Financial Statements and Variance Projections as of September 30, 2014**

---

### Background:

This report is respectfully submitted in accordance with the County's Budget Variance Reporting policy, and provides a first projection to year-end based on expenditures and revenues to September 30, 2014 for Police Services.

### Operating

- Grant funding received to date includes the first "1,000 Officers Programme" payment and the first RIDE programme grant for 2014, this line is expected to be on budget at year-end
- False alarm and parking fine revenues are tracking under budget, if revenues continue at the current pace a small negative variance is expected at year end
- Salaries, wages and benefits for County staff are on budget no variance is expected
- Supplies, materials and equipment costs are high relative to budget at this point in the year as a number of one-time equipment related purchases were made at the Aboyne detachment; a small negative variance is anticipated
- Purchased services are tracking at budget to this point in the year no variance is anticipated
- The majority of the debt charges related to the funding of the Rockwood Operations Centre will be incurred later in the year – no variance is expected
- The second quarter reconciliation of the County policing contract has not yet been provided to the County as Ministry staff have been working on developing the new funding model and providing contract estimates to municipalities Province-wide. The latest correspondence we have from the Ministry indicates second quarter reconciliations will be received by the end of October. Staff will report on the reconciliation once received.

### Capital

- Officers moved into the North Wellington OPP Operations Centre in February. As reported in the spring, the capital project remains open to deal with deficiencies. Staff anticipate a small favourable variance.
- Purchase orders for the live scan fingerprinting machines have been issued. The cost of the machines (estimated at \$60,000 for two machines) will be funded by the General Capital Reserve.

Variances in addition to the projected contract cost savings identified in the first quarter will mainly relate to the calculation of the PSU credit, which over the last five years has ranged from a high of \$1.04 million in 2010 to a low of \$412,500 in 2013. The delay in contract reconciliations this year makes it somewhat difficult to project contract costs to year-end. Staff currently project a favourable variance in 2014 of \$200,000 to \$300,000 overall.

**Recommendation:**

That the Financial Statements and Variance Projections as of September 30, 2014 for Police Services be approved.

Respectfully submitted,

A handwritten signature in black ink, appearing to read 'Ken DeHart', with a stylized flourish extending to the right.

Ken DeHart, CGA  
County Treasurer



**County of Wellington**  
**Police Services**  
Statement of Operations as of  
30 Sep 2014

	<b>Annual Budget</b>	<b>September Actual \$</b>	<b>YTD Actual \$</b>	<b>YTD Actual %</b>	<b>Remaining Budget</b>
<b>Revenue</b>					
Grants and Subsidies	\$267,600	\$0	\$102,435	38%	\$165,165
Licenses, Permits and Rents	\$153,600	\$565	\$111,643	73%	\$41,957
Fines and Penalties	\$75,000	\$8,910	\$49,796	66%	\$25,204
User Fees & Charges	\$79,000	\$6,981	\$61,606	78%	\$17,394
Other Revenue	\$1,000	\$0	\$62	6%	\$938
<b>Total Revenue</b>	<b>\$576,200</b>	<b>\$16,456</b>	<b>\$325,542</b>	<b>56%</b>	<b>\$250,658</b>
<b>Expenditures</b>					
Salaries, Wages and Benefits	\$137,400	\$11,320	\$103,621	75%	\$33,779
Supplies, Material & Equipment	\$40,500	\$3,681	\$36,499	90%	\$4,001
Purchased Services	\$359,800	\$9,548	\$233,464	65%	\$126,336
Transfer Payments	\$17,796,000	\$1,548,012	\$13,521,562	76%	\$4,274,438
Insurance & Financial	\$10,200	\$0	\$7,596	74%	\$2,604
Minor Capital Expenses	\$4,000	\$0	\$4,172	104%	\$(172)
Debt Charges	\$594,500	\$22,739	\$242,565	41%	\$351,935
Internal Charges	\$1,500	\$0	\$1,056	70%	\$444
<b>Total Expenditures</b>	<b>\$18,943,900</b>	<b>\$1,595,300</b>	<b>\$14,150,536</b>	<b>75%</b>	<b>\$4,793,364</b>
<b>NET OPERATING COST / (REVENUE)</b>	<b>\$18,367,700</b>	<b>\$1,578,845</b>	<b>\$13,824,994</b>	<b>75%</b>	<b>\$4,542,706</b>
<b>Transfers</b>					
Transfers from Reserves	\$(93,000)	\$0	\$0	0%	\$(93,000)
Transfer to Capital	\$52,000	\$0	\$52,000	100%	\$0
Transfer to Reserves	\$90,000	\$0	\$90,000	100%	\$0
<b>Total Transfers</b>	<b>\$49,000</b>	<b>\$0</b>	<b>\$142,000</b>	<b>290%</b>	<b>\$(93,000)</b>
<b>NET COST (REVENUE)</b>	<b>\$18,416,700</b>	<b>\$1,578,845</b>	<b>\$13,966,994</b>	<b>76%</b>	<b>\$4,449,706</b>



## County of Wellington

### Police Services

#### Capital Work-in-Progress Expenditures by Department

All Open Projects For The Period Ending September 30, 2014

	Approved Budget	September Actual	LIFE-TO-DATE ACTUALS			% of Budget	Remaining Budget
			Current Year	Previous Years	Total		
NW OPP Operations Centre	\$7,500,000	\$186	\$724,817	\$6,327,781	\$7,052,598	94%	\$447,402
CW OPP Ramp Heating System	\$80,000	\$0	\$0	\$2,230	\$2,230	3%	\$77,770
New Officers Equipment 2014	\$12,000	\$6,332	\$6,332	\$0	\$6,332	53%	\$5,668
Live Scan Fingerprinting	\$60,000	\$0	\$0	\$0	\$0	0%	\$60,000
<b>Total Capital</b>	<b>\$7,652,000</b>	<b>\$6,518</b>	<b>\$731,149</b>	<b>\$6,330,010</b>	<b>\$7,061,160</b>	<b>92%</b>	<b>590,840</b>



**Ontario Provincial Police  
County of Wellington Detachment**

Inspector Scott Lawson

**Report for the  
County of Wellington Police Services Board**

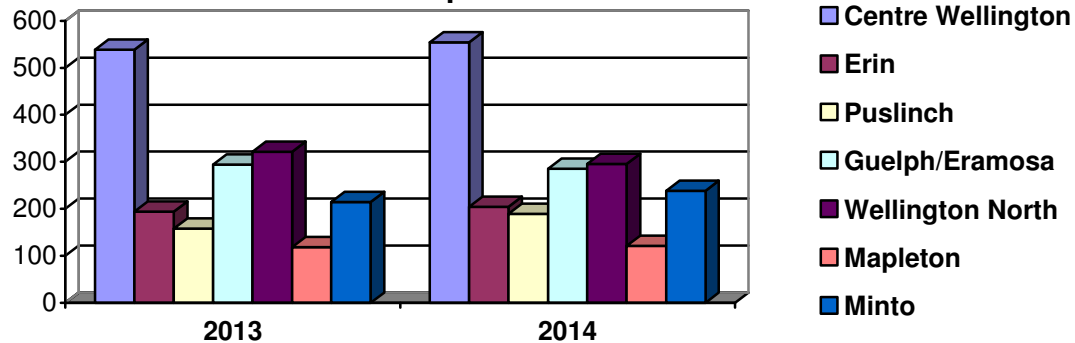
**October 2014**

This report covers the period from September 1<sup>st</sup>, 2014 to September 30<sup>th</sup>, 2014



## Calls for Service

**Calls for Service September 2013  
vs September 2014**



## Calls For Service

Municipality	2008	2009	2010	2011	2012	2013	2014 YTD
Centre Wellington	6,236	6,240	6,214	5,996	6,449	5,961	4,606
Town of Erin	2,079	2,110	2,152	2,156	2,322	2,167	1,544
Puslinch Township	1,987	1,900	1,836	2,157	2,404	2,178	1,660
Guelph/Eramosa	3,035	3,214	3,224	3,615	3,272	3,397	2,620
Wellington North	3,313	3,295	3,172	3,169	3,136	3,337	2,382
Township of Mapleton	1,250	1,209	1,252	1,320	1,322	1,349	1,067
Town of Minto	2,546	2,352	2,322	2,384	2,725	2,524	1,830
Provincial	2140	1997	2,378	2,392	2,694	3,214	1,970
<b>Totals</b>	<b>22,586</b>	<b>22,317</b>	<b>22,550</b>	<b>23,189</b>	<b>24,324</b>	<b>24,127</b>	<b>17,679</b>

## Victim Services Wellington

2014 Year to Date Calls for Assistance County of Wellington OPP	Previous Year Totals	
<b>77</b>	2011	105
	2012	122
	2013	100

## 911 Calls

2014 YTD	1,553
2011	2,340
2012	2,683
2013	2,520

## Ontario Sex Offender Registry

2014 Year to Date OSOR Registrations	Previous Year Totals	
<b>53</b>	2011	67
	2012	69
	2013	70

## False Alarms

2014 YTD	642
2011	946
2012	911
2013	961

\*This is NOT the number of sex offenders residing in Wellington County



## Crime

<b>Crimes Against Persons</b>	<b>2013 YTD</b>	<b>2014 YTD</b>
Homicide	0	0
Sexual Assault	61	32
Robbery	1	4
Assault	225	165

<b>Other Crime</b>	<b>2013 YTD</b>	<b>2014 YTD</b>
Fraud Investigations	218	156
Drug Investigations	330	304

<b>Crimes Against Property</b>	<b>2013 YTD</b>	<b>2014 YTD</b>
Break & Enter	220	156
Auto Theft	56	68
Theft	717	624
Mischief	387	362

<b>Other Investigations</b>	<b>2013 YTD</b>	<b>2014 YTD</b>
Domestic Disputes	388	266
Missing Persons	55	55

<b>Crime Breakdown</b>	<b>North Wellington</b>	<b>Centre Wellington</b>	<b>South Wellington</b>
Homicide	0	0	0
Sexual Assault	1	3	0
Robbery	0	0	1
Assault	11	5	1
Break & Enter	7	5	6
Auto Theft	1	2	2
Theft	46	16	16
Mischief	21	16	12
Fraud Investigations	11	6	4
Drug Investigations	12	9	9
Domestic Disputes	17	9	5
Missing Persons	5	2	0



## Traffic

### Enforcement

<b>Traffic</b>	<b>YTD</b>
Speeding	6,454
Seatbelt Offences	366
Careless Driving	182
Drive Under Suspended	199
Distracted Driver Offences	306
Other Moving Violations	235
Equipment and Other HTA	1,893
No Insurance - CAIA	93
<b>Other Provincial Acts</b>	<b>YTD</b>
Liquor Licence Act	319
Trespass to Property Act	200
Other CAIA	111
Other Provincial Acts	46
<b>By-Law Offences</b>	<b>YTD</b>
By-Law Offences (General)	765
Taxi By-Law	0
<b>County of Wellington OPP Year To Date Total</b>	<b>10,726</b>
<b>West Region Traffic Unit Year To Date Total</b>	<b>443</b>
YTD Total Traffic	9,728
YTD Total Other Provincial	676
YTD Total By-Law	765
<b>2014 Year to Date POA Charges</b>	<b>11,169</b>
2013 Year to Date POA Charges	13,505

### Drinking and Driving

<b>Impaired Driving</b>	<b>2013 YTD</b>	<b>2014 YTD</b>
R.I.D.E. Vehicle Stops	48,266	30,353
Roadside Alcotests	521	547
Warn Suspensions	142	180
ADLS Suspensions	108	145
Persons Charged	112	138

### Racing

<b>YTD HTA Sec. 172 Impoundements</b>	<b>Previous Year Totals</b>	
<b>90</b>	2011	80
	2012	82
	2013	93

### Parking Enforcement

<b>Municipality</b>	<b>2013 YTD</b>	<b>2014 YTD</b>
Centre Wellington	325	475
Erin	12	8
Puslinch	271	141
Guelph / Eramosa	409	240
Wellington North	36	13
Mapleton	16	9
Minto	11	12
County / Other	0	0
<b>Parking Totals</b>	<b>1,080</b>	<b>898</b>



## Traffic

### Suspect Apprehension Pursuits

2014 YTD Pursuits / Fail to Stop for Police	Previous Year Totals	
3	2011	11
	2012	17
	2013	8

## Traffic Initiatives

### R.I.D.E

The Wellington County Traffic Unit conducted a total of 34 R.I.D.E initiatives across the County checking 4,831 vehicles, performing 86 roadside tests and laying 6 impaired driving charges.

### Automated Licence Plate Reader (ALPR cruiser)

During the month of September Wellington County Detachment conducted 113 hours of operating time in the Automated Licence Plate Reader (ALPR cruiser). Once again, officers patrolling in the ALPR cruiser investigated more incidents after the initial stop charging an impaired driver, issuing 9 warn range licences driver's suspensions and conducting an additional 29 roadside tests on suspected drinking drivers.

### Marine Ride Along

On Wednesday September 10th, 2014, PC VAN NORMAN & PC THORNTON took Krista-Marie WHITE & Michelle WISDOM, both from the Guelph Provincial Offences Act (POA) court, for a half-day ride-along. The purpose was to give these members of the Provincial Offences Court a deeper insight and understanding into how Wellington County OPP members conduct marine patrols and how offence enforcement is conducted. The end goal was to give them the tools needed to help them effectively prosecute marine offences when they come to Provincial Offences Court. Below is an excerpt of the educational patrol,

*"Today's ride-along with the Krista-Marie and Michelle from POA court was successful. We took them out to Belwood Lake and gave them a glimpse into how we conduct our marine patrols, including vessel stops and equipment checks. We discussed the things that we look for when we conduct stops, the most common offences that are encountered, and the legislations that regulate the safety equipment needed on and operation of small vessels. Krista-Marie and Michelle were provided a copy of the short form wording/front line enforcement quick reference guide for the Canada Shipping Act as a reference tool for use by the Guelph POA office, and were strongly encouraged to reach out to us at any time if they had any questions regarding these types of charges. Overall it was an extremely valuable venture which should be conducted again if there are any staffing changes in the POA prosecution staff".*



## Traffic

### Motor Vehicle Collisions

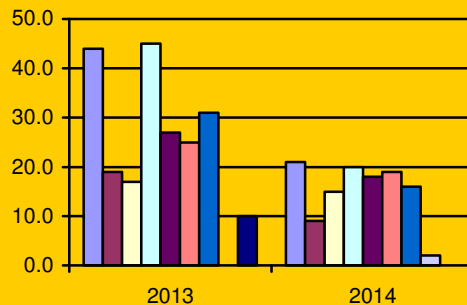
Month	Victims			Collisions								
	Total Victims	Persons Killed	Persons Injured	Total MVC	Fatal	PI	PD	Alcohol Involved			CMV	SMV
								Yes	No	Unk		
JAN	9	1	8	212	1	6	205	7	188	17	19	87
FEB	1	0	1	219	0	1	218	0	210	9	22	60
MAR	10	2	8	152	2	2	148	1	146	5	7	76
APR	22	0	22	122	0	10	112	3	98	21	4	60
MAY	40	1	39	116	1	24	91	3	98	15	6	49
JUN	29	0	29	119	0	18	101	5	98	16	11	51
JUL	36	1	35	130	1	21	108	3	113	14	8	51
AUG	45	0	45	135	0	24	111	4	115	16	7	40
SEP	14	0	14	96	0	10	86	2	86	8	4	31
OCT												
NOV												
DEC												
TOTAL	206	5	201	1301	5	116	1180	28	1152	121	88	505

### Yearly Collision Summary

Collision Type / Characteristic	2008	2009	2010	2011	2012	2013	2014 YTD
Total Reportable MVC	2,027	1,918	1,813	1,976	1,875	2,095	1,301
Property Damage MVC	1,733	1,694	1,525	1,649	1,565	1,761	1,180
Personal Injury MVC	281	213	282	320	302	326	116
Fatal MVC	13	11	6	7	8	8	5
Persons Killed	13	11	6	7	9	9	5
Persons Injured	384	314	425	463	442	481	201
Alcohol Involved	61	76	42	57	63	37	28
<b>Total MVC</b>	<b>2,027</b>	<b>1,918</b>	<b>1,813</b>	<b>1,976</b>	<b>1,875</b>	<b>2,095</b>	<b>1,301</b>

### Car vs Deer Collisions

Municipality	2013 YTD	2014 YTD
Centre Wellington	44	21
Erin	19	9
Puslinch	17	15
Guelph / Eramosa	45	20
Wellington North	27	18
Mapleton	25	19
Minto	31	16
City of Guelph	0	2
Provincial Highways	10	0
<b>Total Collisions</b>	<b>218</b>	<b>120</b>





## Youth Crime

### School Resource Officer Program

*School statistics are now being reported by school year (September – June)*

Student Population		2009-10	2010-11	2011-12	2012-13	2013-14
CWDHS	Centre Wellington DHS	1466	1398	1398	1493	1285
EHS	Erin High School	578	578	578	610	630
NDSS	Norwell DSS	775	716	716	751	646
WHSS	Wellington Heights SS	686	661	661	683	620

### 2013 – 2014 Secondary School Criminal Incidents (Sep – Jun)

Incident Type	CWDHS	EDHS	NDSS	WHSS	YTD Total
Assault	0	0	1	2	3
Mischief	1	0	2	0	3
Threats	4	0	2	4	10
Theft	0	1	1	0	2
Other Criminal	0	0	0	5	5
Drugs	1	0	1	3	5
<b>Total</b>	<b>6</b>	<b>1</b>	<b>7</b>	<b>14</b>	<b>28</b>

### 2013 – 2014 Secondary School Provincial Offences Act Incidents (Sep – Jun)

Incident Type	CWDHS	EDHS	NDSS	WHSS	YTD Total
Highway Traffic Act	1	3	4	0	8
Liquor Licence Act	0	0	0	5	5
Trespass to Property	1	0	0	0	1
Other	0	1	0	18	19
<b>Total</b>	<b>2</b>	<b>4</b>	<b>4</b>	<b>23</b>	<b>33</b>

## Meetings / Presentations

### Centre Wellington DHS

- PC SMITH attended a meeting with school guidance counselors regarding Instagram pictures/messages
- Meeting with Crime Stoppers coordinator to discuss ways in which the program can be involved within CWDHS

### Erin DHS

- PC MACDONALD gave a speech during Opening Day Assembly to introduce himself to staff and students
- PC MACDONALD met with the Principal and Vice-Principal to discuss the SPEARS program and lockdown procedures
- The SRO met with staff and counsellors regarding a VTRA phase 1 intervention involving a student with a history of mental illness and violence

### Norwell DSS

- PC SMITH held meetings with Grade 10 & 11 students during the month of September concerning drinking & driving, distracted driving and internet safety



### **Wellington Heights SS**

- PC WATT met with Youth Options regarding two students and behaviour expectations
- Assisted with setting up crisis counselling to deal with the fallout from an intentional self-harm incident
- PC WATT also attended Arthur Public School, Victoria Cross Public School and Rammoth House Mount Forest for introductions and walk through.

### **Notable School Related Incidents and Events**

#### **Centre Wellington DHS**

- Collaboration continues with school staff to address and discuss intentional self-harm. The School Board Team is now attending the school to monitor any high risk students
- Graffiti located on second floor bathroom. Extra patrols and officers in the vicinity of CWDHS on September 17<sup>th</sup>
- CWDHS was in a hold and secure mode. Interviews conducted. No charges have been laid at this time

#### **Erin DHS**

- A student was identified driving aggressively in the school parking lot. The student was spoken to and warned regarding his driving habits
- A female student was caught on video camera stealing from a donation bin during school hours. The student admitted responsibility and was suspended from school. The student agreed to pay back the money and was remorseful for her actions, no charges were laid
- Plans are being finalized for a lock down drill in October

#### **Norwell DSS**

- VTRA was conducted on a student at Palmerston Public School
- A suspicious chicken was observed in a motor vehicle on the school parking lot. A student was identified and spoken to; the chicken was very cooperative and returned home.

### **Wellington Heights SS**

- A male student abruptly left the classroom threatening self-harm. The student was located, apprehended and transported to hospital for care
- Three female students were observed returning from lunch and exhibiting odd behaviour. Students were confronted and admitted to smoking marihuana over the lunch period. The students were suspended for three days and police attended each residence to speak with parents
- Students at WHSS were being threatened by three female students from GSCVI in Guelph. The Youth Officer and VP at GSCVI were contacted regarding the incident and the three female parties were spoken to and received a formal warning



## Canine Unit

### 2014 Calls for Service and Hours

Occurrence Type	Initial (Calls)	Initial (Hours)	Assist (Calls)	Assist (Hours)	YTD (Calls)	YTD (Hours)
Occurrence Totals (OPP)	55	284.50	4	27.00	59	311.50
Occurrence Totals (Other)	1	6.00	0	0.00	1	6.00
Occurrence Totals (Combined)	56	290.50	4	27.00	60	317.50

Canine Handler: Provincial Constable Barry REID

### Notable Incidents and Events

**Date:** September 2, 2014

**Location:** Wellington County

The Canine Unit assisted with the Back to School Traffic Initiative by conducted patrols of a dangerous intersection near Salem Public School. Two Provincial Offence Notices were issued and three warnings were given out

**Date and Time:** September 3, 2014

**Location:** Wellington

The Canine Unit assisted with a medical call. Upon arrival PC REID conducted CPR on a male patient until the arrival of Fire Department and Ambulance

**Date:** September 5 & 6, 2014

**Location:** Huron County

The Canine team was requested to assist with an ongoing search for missing 77 year old male party. Canine assisted with searches of a ravine and a wooded area around the missing persons' property. The male party was located in a corn field

**Date:** September 9, 2014

**Location:** Meaford

PC Reid & Knox were requested to assist DES with the execution of CDSA search warrant at an apartment in Meaford. Investigators believed that the suspect would be arriving at the apartment transporting a quantity of drugs for distribution. Canine covered the secondary exit from the apartment building, but did not have any contact with the suspect.

PC Reid & Jag were then requested to search the apartment under authority of CDSA search warrant. The Canine search by Jag did not locate any drugs. Jag was also used to search the suspect vehicle, but no indications were given

**Date:** September 11, 2014

**Location:** Palmerston

PC Reid & Knox were requested to cover the rear exits of a residence during entry by ERT. The male suspect was located inside the residence and was arrested without incident

**Date:** September 18, 2014

**Location:** John Black PS, Fergus

The Canine Unit conducted a demonstration and presentation at the John Black Public School open house



**County of Wellington OPP  
Report for the Police Services Board**

**Date: September 24, 2014**

**Location: Wellington County**

The Canine Unit conducted traffic control at public schools during the Terry Fox Run fundraiser. The Canine Unit also patrolled Mapleton Township in relation to ongoing rural property crimes; patrols of Elora were also conducted in relation to break & enter from the previous week.

**Date and Time: September 27, 2014**

**Location: South Bruce**

PC Reid & Knox were dispatched to a missing person occurrence at the request of West Grey PS. Knox was used to search a 1.5 km trail, a nearby field, a 25 row deep corn field, a nearby lookout area, an adjacent swamp area, and very thick brush. Nothing notable was located

**Date: September 28, 2014**

**Location: Oakville**

Canine Unit presentation and demonstration at the Lab Rescue fundraiser

**Date: September 30, 2014**

**Location: Guelph**

The Canine Unit was dispatched to a farm residence near the Guelph-Nichol Townline. Officers attempted to stop a vehicle that fled to the rear of a property among several old farm buildings. Officers located the vehicle parked behind a house with no one inside. Knox was deployed to search for a track leaving the vehicle and he located a black backpack containing B&E tools. The track continued through thick undergrowth and into a cornfield along the head row, but it was lost near the edge of the field.



## Auxiliary Unit

Coordinator: Provincial Constable John PEPPLER  
Unit Commander: Auxiliary S/Sgt. B. MC GIMSIE

### Notable Incidents and Events

Auxiliary Staff Sergeant MCGIMSIE reported that everything is status quo with the Auxiliary Unit during the month of September. Below is a list of events the unit attended during the month of September,

- Fergus Fall Fair
- Puslinch Fall Fair
- Child Car Seat Clinic
- OPP Youth Camp
- Ice Bucket Challenge
- COPD – International Ploughing Match
- IST – assist firearms training
- Sergeant Promotion for Auxiliary Sergeant ELLIS

## Media

Provincial Constable Bob BORTOLATO & Provincial Constable Cheri ROCKEFELLER

### Notable Incidents and Events

- During the month of September the Media Unit issued 72 media releases bringing the year-to-date total to 465 media releases
- On September 19<sup>th</sup>, 2014 Sgt. HARRIGAN & PC BORTOLATO, in conjunction with Tim Horton's, helped to transport two kids to Tim Horton's camp.



## Administration

### Revenue

Year	County	Provincial	Total
2009	\$73,307.32	\$9,552.04	\$82,859.36
2010	\$87,122.04	\$7,899.10	\$95,012.14
2011	\$81,274.66	\$9,233.56	\$90,508.22
2012	\$75,836.60	\$5,043.55	\$80,880.15
2013	\$70,202.29	\$5,373.66	\$75,575.95
<b>2014</b>	<b>\$62,291.72</b>	<b>\$5,491.75</b>	<b>\$67,783.43</b>

### Paid Duties

Year	Paid Duties	Officers	Hours	Admin Fees
2010	165	298	1,648.50	\$3,075.00
2011	207	446	2,455.25	\$5,325.00
2012	165	312	1,890.75	\$2,775.00
2013	227	469	3300.00	\$1,575.00
<b>2014</b>	<b>164</b>	<b>313</b>	<b>2152.50</b>	<b>\$750.00</b>

## Personnel

### Complaints

Complaint Type by Status	2009	2010	2011	2012	2013	2014
Complaints Received	19	13	16	16	12	<b>12</b>
Complaints Resolved	10	8	8	5	0	<b>2</b>
Complaints Unfounded	6	2	6	8	5	<b>4</b>
Complaints Withdrawn	2	3	1	2	4	<b>1</b>
Complaints Ongoing	1	0	1	1	3	<b>5</b>

No	Complaint Type	Status	No	Complaint Type	Status
1	Public	Closed	7	Public	Ongoing
2	Public	Closed	8	Internal	Ongoing
3	Public	Closed	9	Public	Closed
4	Public	Closed	10	Internal	Ongoing
5	Public	Closed	11	Public	Ongoing
6	Public	Ongoing	12	Public	Closed

**Internal Complaint** is an allegation by someone who is not a member of the public concerning the policy, services, local policies of a contract location, or the conduct of an employee or volunteer of the OPP and includes a WDHP allegation, and/or an allegation of workplace violence.

**Public Complaint** is a complaint by a member of the public concerning the policy, services, local policies of a contract location, or the conduct of an employee of the OPP.



## Personnel

### Acknowledgements

Date	Member(s)	Particulars
11Sep14	PC T. PRIDHAM	<p>On September 11, 2014 PC PRIDHAM located a known career criminal with several outstanding arrest warrants hiding out in a residence in Palmerston. The male party has been involved in 140 police occurrences and has been previously arrested 32 times; most recently he has been involved in three police pursuits, two of which occurred within the last three weeks. The latest pursuit occurred within the Town of Drayton and resulted in the suspect vehicle striking a shed and a flag pole. The pursuit was ultimately called off for public safety reasons.</p> <p>Over a three week period PC PRIDHAM followed tips and leads he was able to produce using his communication skills and knowledge of who knows who to locate a flop house that the suspect may have been hiding out in.</p> <p>PC PRIDHAM located a stolen motorcycle in the driveway of the flop house that matched the description of a stolen motorcycle stolen by the suspect at an earlier date. PC PRIDHAM secured the immediate area. A warrant to enter the house was sought and several hours later it was granted. The house was entered and the suspect was located and arrested.</p> <p>Due to PC PRIDHAM's perseverance, leadership and job skill a known criminal who had been routinely victimizing the public and endangering police officers is off the streets and unable to inflict more damage upon the public</p>
25Sep14	PC R. LYTLE	<p>On September 24<sup>th</sup> &amp; 25<sup>th</sup>, 2014 PC LYTLE was dispatched to a missing person occurrence involving a suicidal female party. As an ERT member PC LYTLE was deployed with his team to conduct a ground search of a wooded area. ERT and Canine members searched the bush, located the female party and brought her out unharmed.</p> <p>PC LYTLE is being recognized for his performance throughout this possibly tragic event. Staff Sergeant MILLER stated the following, <i>"PC LYTLE is a very dedicated ERT member and I know he is very good at his job"</i>.</p>



## Notable Events

### Noteworthy Information and Events

#### Back to School Initiative

The beginning of the school year has traditionally meant an increase in traffic on local roads. While serious incidents and complaints regarding poor driving behavior are infrequent there is a need to be proactive to ensure the safety of those using the roadways. Wellington County has 32 schools including primary and secondary grade schools. These schools educate approximately 11,751 students.

The Back to School Initiative is a nine day campaign that focused OPP resources to area school zones to convey to the public the importance of strictly adhering to all traffic laws within the school zones. A marked increase in officer presence, within the school zones, for the week prior to and the first week of the school year stressed to motorists on local roadways that the safest interaction with children in and around schools is the OPP's top priority. The purpose of the initiative is to change driving behaviour in and around school zones both before and after children arrive.

The overall goal of the nine day campaign is not an 'enforcement initiative' but an awareness campaign. The intended result within these zones would be modified driving habits that remain throughout the school year without an O.P.P presence in the area.

Staff Sergeant Jack HUNJAN sent an email to all members of the Wellington County OPP with the results of the initiative on September 11<sup>th</sup>, 2014. Below is that email,

*"I'd like to take this opportunity to thank all of you for taking part in this year's Back to School Initiative which ran for two weeks. It was quite impressive to see everyone out and about during peak school hours and there were a lot of schools to cover. The main focus of the plan was to educate the motoring public and be visible. Charges were laid where warranted. We received some well-deserved praise from the County politicians. Great job overall and the numbers below really tell the tale"*

- 122 Hours dedicated to this initiative
- 1.5 hours on bicycle patrol
- 7 Municipal By-law infractions during week 2 of the campaign
- 4 speeding charges
- 10 Seat belt charges
- 41 various HTA/POA charges
- Total of 62 Charges
- Total of 46 warnings

#### Wellington County OPP Charity Golf Tournament

On Monday September 22nd 2014, 106 golfers attended the Guelph Lakes Golf and Country Club for the 2014 Wellington County OPP Charity Golf Tournament. Despite the chilly temperatures everyone had a great day. A total of \$4000 was raised to support the Guelph Wish Fund for Children. The Guelph Wish Fund for Children is a local charity that provides aid to children with severe illness, injury or handicap in Guelph and Wellington County.



### **Labour Day Weekend**

The Labour Day weekend initiative commenced on August 29<sup>th</sup> at 12:01am and concluded at 11:59pm on September 1<sup>st</sup>. Wellington County OPP led in two major categories and received much praise from Command Staff across the Province. Below are some excerpts,

Scott LAWSON  
*Detachment Members,*

*I would like to express my thanks to each of you for your efforts in support of this important provincial traffic safety initiative which bookends the collision-filled summer season. The numbers speak for themselves.*

- *We led our Region in almost every traffic enforcement category*
- *Province*
  - *Top of the list in total HTA charges = 432 (most for speeding).*
  - *10 Impaired driving charges also led the entire province.*

*Keep in-mind that we are trying to change driver behavior by focusing on the Big 4; with a goal of reducing collisions (or their severity) which directly impacts public safety in our County.*

### **Wellington County Plowing Competition**

On August 21, 2014 the Wellington County Plowing Competition was held on County Road 29 in Centre Wellington. Sergeant NIXON and Sergeant HERRIGAN were invited to attend the event as dignitaries; both Sergeants took part in the festivities and were placed against each other in a friendly competition. Sergeant NIXON was declared the winner, but the victory was protested by Sergeant HERRIGAN as he believed the competition was fixed.

### **ALS Ice Bucket Challenge**

Staff Sergeant HUNJAN was nominated by Deputy Fire Chief Richard RENAUD of the Guelph/Eramosa Fire Department to take part in the ALS Ice Bucket Challenge. Staff Sergeant HUNJAN took up the challenge along with 10 other members of the Wellington County OPP. The Mayor of Guelph/Eramosa – Warden of the County, Chris WHITE was asked to be the honorary bucket dumper.

### **West Region Pharmacy Break & Enters Initiative**

A meeting was held on September 11<sup>th</sup>, 2014 to address ongoing Pharmacy break & enters. The meeting produced some excellent dialogue amongst numerous detachment representatives. The end result identified a team that will be assigned to an initiative addressing the break & enters in Wellington and around the Region. Detachments will identify a member that will undertake a CPTED project for the smaller pharmacies within their jurisdiction. Wellington County OPP Detective Constable FOLEY will be the lead.

# Processing Activity Report

Page: 1

Data Type: Parking

Creation Date/Time: 02/10/2014 8:11:04 AM

Transaction dates of 01/09/2014 through 30/09/2014

*The County of Wellington*

Agency: All

Ticket Activity	Number	Value
<b>Tickets - Entered</b>		
AutoCite Ticket	0	\$0.00
Manually Entered Ticket	48	\$960.00
Skeletal Ticket	0	\$0.00
<b>Subtotal Tickets Entered</b>	<b>48</b>	<b>\$960.00</b>
<b>Tickets - Reactivations</b>		
Voids - Reinstated	0	\$0.00
Dismissals - Reversed	0	\$0.00
Waived - Reversed	0	\$0.00
<b>Subtotal Ticket Reactivated</b>	<b>0</b>	<b>\$0.00</b>
<b>Tickets - Removed</b>		
Voided	0	\$0.00
Dismissed	42	\$840.00
Waived	0	\$0.00
Skeletal Ticket Matches	0	\$0.00
<b>Subtotal Ticket Removed</b>	<b>42</b>	<b>\$840.00</b>
<b>Total Ticket Activity</b>	<b>6</b>	<b>\$120.00</b>
<b>Fines and Fees Added</b>		
Fines Added	0	\$0.00
Late Fees Added	21	\$210.00
NSF Fees Added	0	\$0.00
Other Fees Added	10	\$160.00
<b>Total Fines and Fees Added</b>	<b>31</b>	<b>\$370.00</b>
<b>Fines and Fees Removed</b>		
Fines Removed	0	\$0.00
Late Fees Removed	2	\$20.00
NSF Fees Removed	0	\$0.00
Other Fees Removed	0	\$0.00
<b>Total Fines and Fees Removed</b>	<b>2</b>	<b>\$20.00</b>
<b>Total Change from Ticket Activity and Added Fees</b>		<b>\$470.00</b>

Payment Activity	Number	Fine	Late Fee	NSF Fee	Service Fee	Total \$
<b>Ticket - Payments</b>						
Fully Paid	44	\$900.00	\$150.00	\$0.00	\$96.00	\$1,146.00
Partially Paid	42	\$1,260.00	\$0.00	\$0.00	\$672.00	\$1,932.00
Over Payments	0	\$0.00	\$0.00	\$0.00	\$0.00	\$0.00
<b>Subtotal Payments</b>	<b>86</b>	<b>\$2,160.00</b>	<b>\$150.00</b>	<b>\$0.00</b>	<b>\$768.00</b>	<b>\$3,078.00</b>
<b>Outside Payments</b>	<b>85</b>	<b>\$2,120.00</b>	<b>\$150.00</b>	<b>\$0.00</b>	<b>\$768.00</b>	<b>\$3,038.00</b>
<b>Ticket Payments Rescinded</b>						
Payment Reversals	1	\$40.00	\$0.00	\$0.00	\$0.00	\$40.00
NSF Reversals	0	\$0.00	\$0.00	\$0.00	\$0.00	\$0.00
<b>Subtotal Rescinded Payments</b>	<b>1</b>	<b>\$40.00</b>	<b>\$0.00</b>	<b>\$0.00</b>	<b>\$0.00</b>	<b>\$40.00</b>
<b>Refunded Overpayments</b>	<b>0</b>	<b>\$0.00</b>				<b>\$0.00</b>
<b>Payments</b>	<b>85</b>	<b>\$2,120.00</b>	<b>\$150.00</b>	<b>\$0.00</b>	<b>\$768.00</b>	<b>\$3,038.00</b>
<b>Total Fees Paid</b>				<b>0</b>		<b>\$0.00</b>
<b>Gross Revenue( Total Payments - Total Fees Paid )</b>						<b>\$3,038.00</b>
<b>Adjustments</b>				<b>0</b>		<b>\$0.00</b>

Net Database Change( Total Change from Activity and Added Fees - Total Payments - Adjustments ) \$-2,568.00



# COUNTY OF WELLINGTON

## COMMITTEE REPORT

**To:** Chair and Members of the Police Services Board  
**From:** Kelly-Ann Wingate, Parking, Licensing and Alarm Coordinator  
**Date:** Wednesday, October 8, 2014  
**Subject:** False Alarm Revenue Report

False Alarm revenue collected for 2014.

Month	False Alarms sent to the County for invoicing	Amount invoiced to customers	Amount collected to date
January	68	\$2600	\$2700
February	0	\$200	\$3300
March	66	\$4900	\$900
April	38	\$1850	\$3200
May	44	\$2500	\$3300
June	54	\$3050	\$1400
July	42	\$1750	\$3300
August	46	\$2650	\$1250
September	32	\$6700	\$2500
October			
November			
December			
2014 YTD	390	\$26,200	\$21,850
2013 YTD	343	\$30,000	\$27,850
2013 Totals	463	\$39,400	\$38,250

### Recommendation:

That the September 2014 False Alarm Revenue report be received for information.

Respectfully submitted,

Kelly-Ann Wingate  
Parking, Licensing and Alarm Coordinator